

**RESOLUTION NO.**

2000-038

ADOPTED BY THE SACRAMENTO CITY COUNCIL

ON DATE OF JAN 25 2000

**APPROVING FINAL MAPS ENTITLED  
"NORTHPOINTE PARK UNIT NO. 8-1-A AND 8-1-B"  
AND AMENDED SUBDIVISION IMPROVEMENT  
AGREEMENT (P96-058) - AMENDING RESOLUTION  
#99-598**

**WHEREAS, THE CITY COUNCIL OF THE CITY OF SACRAMENTO FINDS  
AND DETERMINES AS FOLLOWS:**

- A. The Final Maps for Northpointe Park Unit Nos. 8-1-A and 8-1-B, located between Del Paso Road and Elkhorn Boulevard east of the East Drain with provisions for its design and improvement, are consistent with the North Natomas Community Plan. See Exhibit "A-1" and "A-2" for project location.
- B. The Final Maps are in substantial compliance with the previously approved tentative map.

**NOW, THEREFORE, BE IT RESOLVED BY THE COUNCIL OF THE CITY OF  
SACRAMENTO AS FOLLOWS:**

- 1. The Final Maps for this project are hereby approved subject to the execution by all parties of the amended Subdivision Improvement Agreement for that subdivision.
- 2. All offers of dedication shown on said maps are hereby accepted subject to the improvement thereof required by the amended Subdivision Improvement Agreement.
- 3. The City Manager and City Clerk are authorized and directed to execute on behalf of the City of Sacramento that certain amended Subdivision Improvement Agreement between the City and Lennar Winncrest, LLC, a

**FOR CITY CLERK USE ONLY**

RESOLUTION NO.: 2000-038

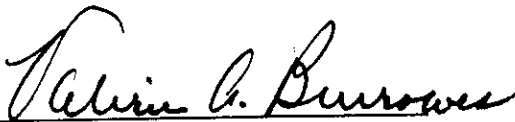
DATE ADOPTED: JAN 25 2000

Delaware Limited Liability Company, Successor by Dissolution to Lennar Natomas, LLC, a Nevada Limited Liability Company (hereinafter referred to as the "Subdivider") to provide for the subdivision improvements required by the Subdivision Map Act and Title 40 (Subdivision Regulations) of the Sacramento City Code.

4. The City Clerk is authorized and directed to record the above-mentioned agreement in the official records of Sacramento County.
5. By agreement between the City and the Subdivider, the Final Maps and Amended Subdivision Improvement Agreement referenced above shall replace and supercede the Final Map and Subdivision agreement that were approved by City Council Resolution No. 99-598 on October 26, 1999. Therefore this amended Resolution No. 99-598 shall replace and supercede in its entirety Resolution No. 99-598 adopted on October 26, 1999.

  
MAYOR

ATTEST:

  
CITY CLERK

S:\techsvs\devsvs\council\P96-058unit#8-1A & 8-1B

FOR CITY CLERK USE ONLY

RESOLUTION NO.: 2000-038  
DATE ADOPTED: JAN 25 2000



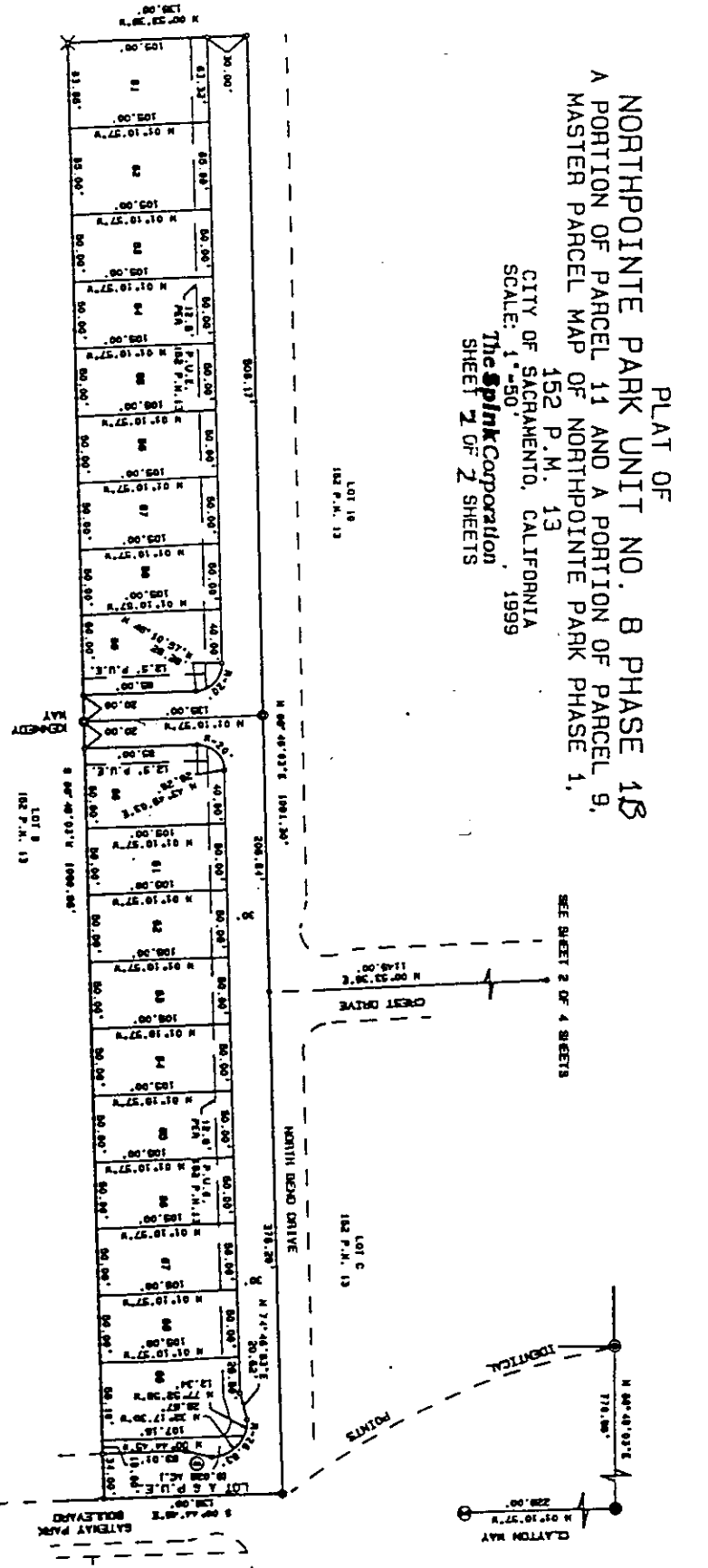
EXHIBIT "A-2"

PLAT OF  
NORTHPOINTE PARK UNIT NO. 8 PHASE 1B  
A PORTION OF PARCEL 11 AND A PORTION OF PARCEL 9,  
MASTER PARCEL MAP OF NORTHPOINTE PARK PHASE 1,  
152 P.M. 13  
CITY OF SACRAMENTO, CALIFORNIA  
SCALE: 1"=50'  
The Splink Corporation  
SHEET 2 OF 2 SHEETS



LINE DATA

Q	BEARING	DISTANCE
1	N 17° 31' 21" E	20.20'



NOTE:  
REFER TO SHEET 1 FOR NOTES,  
LEGEND AND STATUS OF MEASUREMENTS.

DEL PASO ROAD

N. 00° 44' 45" W. →  
1114.85'

P-99059

FOR CITY CLERK USE ONLY

2000-038

RESOLUTION NO:

DATE ADOPTED:

JAN 25 2000

42