

RESOLUTION NO. 2006-361

Adopted by the Sacramento City Council

May 23, 2006

AMENDING THE GENERAL PLAN LAND USE MAP TO RE-DESIGNATE 7.7± ACRES OF PUBLIC/QUASI-PUBLIC MISCELLANEOUS TO LOW DENSITY RESIDENTIAL 4-15 DU/NA, FOR THE PROPERTY LOCATED ON THE NORTHEAST CORNER OF NORTH PARK DRIVE AND KANKAKEE DRIVE IN SACRAMENTO, CALIFORNIA. (P05-182) (APN: 225-1780-003; 201-0300-126)

BACKGROUND

The City Council conducted a public hearing on May 23, 2006 concerning the General Plan land use map, and, based on documentary and oral evidence submitted at the public hearing, the City Council hereby finds:

- A. The proposed plan amendment is compatible with the surrounding uses;
- B. The subject site is suitable for single-family residential development; and
- C. The proposal is consistent with the policies of the General Plan and the North Natomas Community Plan that promote neighborhood revitalization, ownership opportunities, and development in infill areas.

BASED ON THE FACTS SET FORTH IN THE BACKGROUND, THE CITY COUNCIL RESOLVES AS FOLLOWS:

- Section 1. The City Council adopts the General Plan Amendment for the property, as described on the attached Exhibit A, in the City of Sacramento which is hereby re-designated on the General Plan land use map from 7.7± acres of Public/Quasi-Public Miscellaneous to Low Density Residential 4-15 du/na (APN: 225-1780-003; 201-0300-126).

Table of Contents:

Exhibit 1: General Plan Amendment – 1 Page

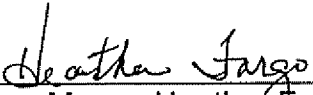
Adopted by the City of Sacramento City Council on May 23, 2006 by the following vote:

Ayes: Councilmembers Cohn, Fong, Hammond, McCarty, Pannell Sheedy, Tretheway, Waters, and Mayor Fargo.

Noes: None.

Abstain: None.

Absent: None.



Mayor, Heather Fargo

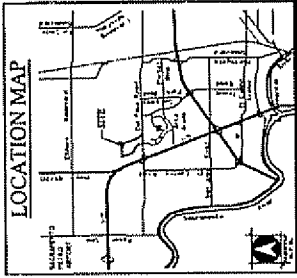
Attest:



Shirley Concolino, City Clerk

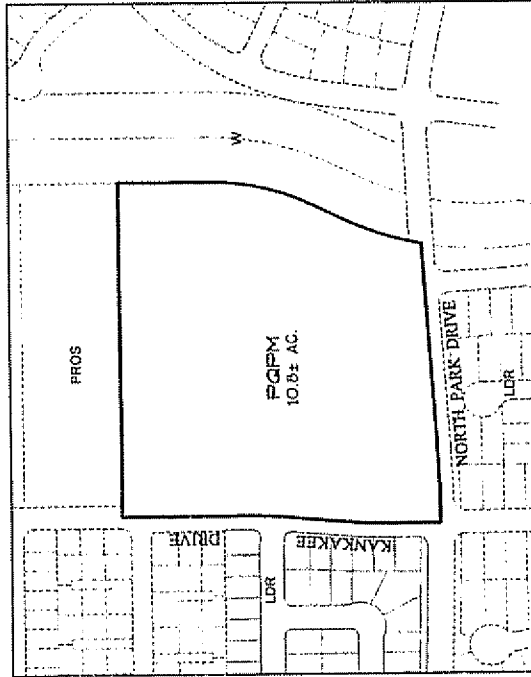
EXHIBIT 1

GENERAL PLAN AMENDMENT EXHIBIT
CREEKSIDE PARCEL 3
 CITY OF SACRAMENTO, CALIFORNIA
 OCTOBER 27, 2005

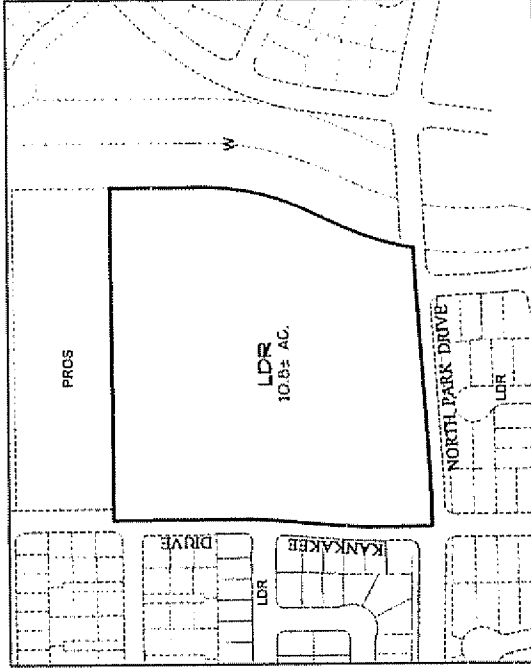
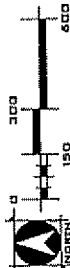


GENERAL PLAN SUMMARY TABLE

DESIGNATION	LAND USE	EXISTING	PROPOSED	DIFFERENCE
PROG	PROG	10.8	10.8	-0.0
LDR	LDR	10.8	10.8	-0.0
		10.8	10.8	-0.0



Existing General Plan



Proposed General Plan

WOOD ROGERS
 LAND USE PLANNING AND DESIGN
 2501 O STREET, SUITE 100, SACRAMENTO, CALIFORNIA
 (916) 441-7788 FAX (916) 441-7787

P05-182
10-31-2005