



2003  
5.3

DEPARTMENT OF  
PARKS AND RECREATION

**CITY OF SACRAMENTO**  
CALIFORNIA

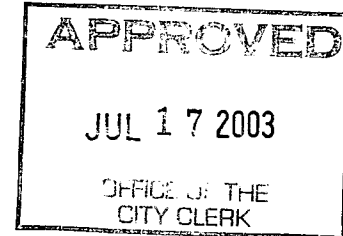
1231 I STREET, #400  
SACRAMENTO, CA  
95814-2997

RECREATION &  
HUMAN SERVICES

(916) 264-5200  
FAX 264-8329

June 20, 2003

City Council  
Sacramento, California



Honorable Members in Session:

**SUBJECT: APPROVE THE SOUTHSIDE PARK ACCESSIBLE PLAYGROUND  
MASTER PLAN CIP (PN: LS52) .**

**LOCATION AND COUNCIL DISTRICT:** 2115 6<sup>th</sup> Street, Council District 4

**RECOMMENDATION:**

Staff recommends that the City Council, by resolution (page 5) approve the Master Plan for the Southside Park Accessible Playground.

**CONTACT PERSONS:** RALPH PETTINGELL, RECREATION & HUMAN SERVICES MANAGER, 277-6173  
JANET BAKER, PARK DEVELOPMENT MANAGER, 264-8234

**FOR COUNCIL MEETING OF:** July 17, 2003

**SUMMARY:**

Southside Park is an existing 19.9 acre community park located at 2115 - 6<sup>th</sup> Street in Downtown Sacramento. The proposed exceptionally accessible playground has been designed with 70 percent accessibility that exceeds the current baseline Americans with Disabilities Act (ADA) standards. The proposed accessible playground would be for the enjoyment of all children with disabilities, able-bodied children, their families, and caretakers. This report requests approval of the park master plan.

**COMMITTEE/COMMISSION ACTION:**

The Citizen's Advisory Committee (CAC) for Parks and Recreation approved the design elements and conceptual design of the Southside Park Accessible Playground at its April 3, 2003 meeting.



*Optimize the Experience of Living!*

In addition, the CAC approved the master plan for the playground at its June 5, 2003 meeting. Also, the ADA Commission reviewed the conceptual plan on February 23, 2003 and reviewed the master plan at their June 12, 2003 meeting.

### **BACKGROUND INFORMATION:**

The City of Sacramento, in conjunction with the Sutter Health Sacramento Sierra Region, propose to develop the City's first exceptionally accessible playground for city-wide use. This proposed playground located at Southside Park has been designed with 70 percent accessibility that exceeds the current baseline ADA standards. While all city playgrounds meet ADA standards, this project is intended to reach beyond the current standard to provide children of all abilities and their siblings, families, and caretakers with a playground with features that stimulate development and enhance play opportunities for all. While it is not financially feasible for all city playgrounds to reach beyond the current ADA standards, it is possible to develop 1-3 accessible playgrounds of this nature over time throughout the City in central locations.

Two community workshops were held where the public was invited to participate and provide input into the playground master plan process. The community approved the proposed Southside Park Accessible Playground master plan on May 15, 2003.

The proposed exceptionally accessible playground at Southside Park will replace the existing playground that is due for replacement.

The proposed accessible playground is approximately 16,800 square feet and will be located adjacent to the existing wading pool facility and close to the existing restroom for easy access. The existing non-operational wading pool will be removed and replaced with the new accessible playground. Existing trees in the proposed accessible playground site will be inspected by the City Arborist prior to construction. If recommended, existing trees will be trimmed or removed and replaced with more appropriate tree species.

The theme of the playground is "the solar system." Three distinct age appropriate play areas have been designed to include a rubber surfaced play area for infants under the age of 2, a tot lot for pre-school age children (2-5 year olds), and an adventure play area for school age children (5-12 year olds). Unique play features are included in the design to create a sensory enriched accessible playground. Such unique play elements in the play areas include adventure play equipment with access ramps and handrails, tot lot play equipment with access ramps and handrails, a merry-go-round, swings, spring riders, group rocking units, self propelled spin play units, independent climbing apparatuses and play units with sound features. Brightly colored protective rubber play surfacing in shapes of different planets will also add to the space theme.

One focal point in the accessible playground is the decorative central seating area with seat walls and a colored sun pattern in the concrete paving to further enhance the solar galaxy theme.

A 10-foot wide concrete walkway borders the entire accessible playground site and provides two entries into the accessible playground from 6<sup>th</sup> Street. This pathway can support wheel chair users and pedestrians. Pathways will also have various colors and textures to again stimulate different senses. Additional security is provided by a 3-foot high decorative wall and ornamental metal fence that secures the west portion of the accessible playground by eliminating direct access from the playground to the adjacent street.

Other amenities in the accessible playground include an art sculpture, raised planters, therapeutic gardens with various textured and scented plants, picnic tables, benches, trash and recycling receptacles, a drinking fountain, bike racks, flowering shrubs, and ground covers. Accessible parking spaces and curb modifications will be added along 6<sup>th</sup> Street.

With additional funding, the second phase of the accessible playground development will include additional secondary walkways, a sand play area with various sand play equipment, tot swings, swings with therapeutic seats, a sheltered group picnic area, two entry art sculptures, and additional landscaping.

Future phase includes replacement of the existing restroom with a larger fully accessible family restroom, heating of the existing pool, accessible pool chair lift and group shade structure.

Staff will return to Council in October of 2003 for approval of the award of the construction contract and approval of the construction documents.

#### **FINANCIAL CONSIDERATIONS:**

This project is being funded jointly by the City of Sacramento and Sutter Health Sacramento Sierra Region. The City portion includes \$70,000 from the Landscape and Lighting fund, \$100,000 from the Sacramento Housing and Redevelopment Agency CDBG funds, and \$200,000 from Proposition 12 (pending Council approval). The Sutter Health Sacramento Sierra Region will be contributing \$300,000 to the project and the remaining \$80,000 will be gathered through fundraising efforts led by Sutter Health which are already under way. Phase 1 development scope will be determined by the secured funding at the time of bidding. The entire project cost is \$1,224,676. Secured funding to date is \$670,000.

#### **ENVIRONMENTAL CONSIDERATIONS:**

The Planning and Building Department, Environmental Planning Services has determined that approval of the Southside Park Accessible Playground design is exempt from the requirements of the

California Environmental Quality Act (CEQA), pursuant to Section 15061(b)(3) of the CEQA Guidelines. Section 15061(b)(3) consists of an activity covered by the general rule that CEQA applies only to projects, which have the potential for causing a significant effect on the environment. Where it can be seen with certainty that there is no possibility that the activity in question may have a significant effect on the environment, the activity is not subject to CEQA. However, the project will require future discretionary approval in order to proceed with actual construction/development of the proposed project. At the time of final action, appropriate CEQA environmental review documentation will also be completed.

**POLICY CONSIDERATIONS:**

The development of this facility is consistent with the City Council's goals to preserve and expand arts and culture, open space, the urban forest, parks and recreational opportunities, and establish and strengthen community and regional partnerships to enhance the quality of life.

**ESBD CONSIDERATIONS:**

The selection of Landscape Architect consultants and contractors for this project will follow City established guidelines for inclusion of ESBD firm.

Respectfully Submitted,



ROBERT G. OVERSTREET,  
Director of Parks and Recreation

Recommendation Approved,



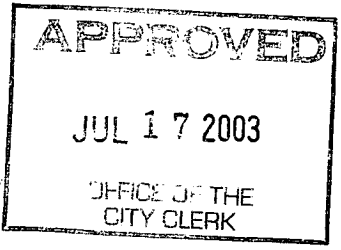
ROBERT P. THOMAS  
City Manager

Resolution - Page 5

Exhibit A- Southside Park Accessible Playground Master Plan - Page 6

Exhibit B- Southside Park Accessible Playground Elevation - Page 7

Exhibit C - Area Map - Page 8



**RESOLUTION NO.** 2003-494  
**ADOPTED BY THE SACRAMENTO CITY COUNCIL**

**ON DATE OF:** \_\_\_\_\_

**RESOLUTION TO APPROVE  
THE SOUTHSIDE PARK ACCESSIBLE PLAYGROUND MASTER PLAN  
(CIP PN:LS52)**

The City Council of the City of Sacramento hereby approves the Master Plan for the Southside Park Accessible Playground.

\_\_\_\_\_  
**MAYOR**

**ATTEST:**

\_\_\_\_\_  
**CITY CLERK**

\_\_\_\_\_  
**FOR CITY CLERK USE ONLY**

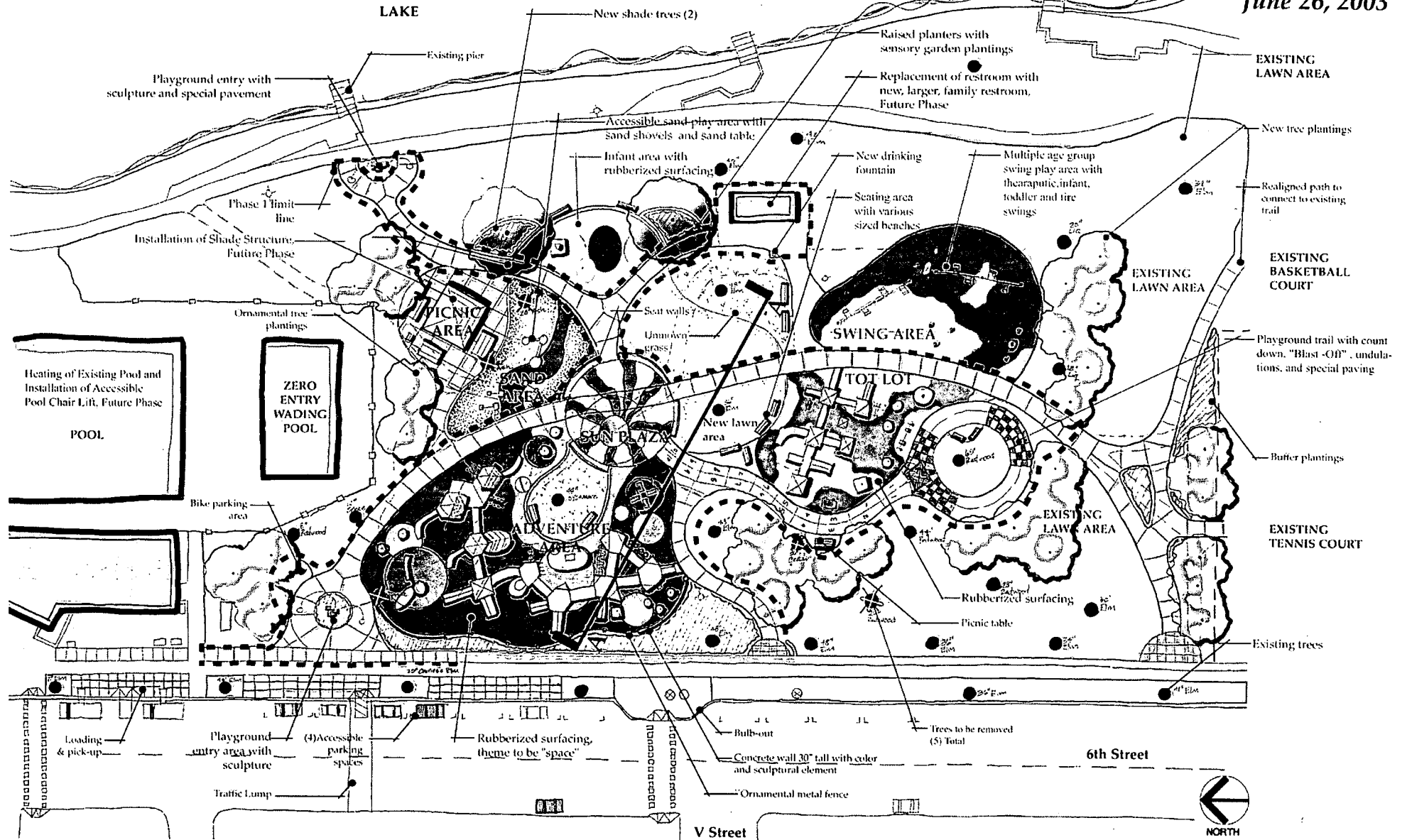
**Resolution No.:** \_\_\_\_\_

**Date Adopted:** \_\_\_\_\_

# EXHIBIT A

# MASTER PLAN

June 26, 2003



 Callander Associates

Parks and Recreation Planning  
Landscape Architecture

© 2003 Southside Park Playground. All rights reserved. No part of this document may be reproduced without written permission from Callander Associates.

## SOUTHSIDE PARK PLAYGROUND

The City of Sacramento  
Park Planning/ Design Development Division

7

# PLAYGROUND ELEVATION

May 15th, 2003

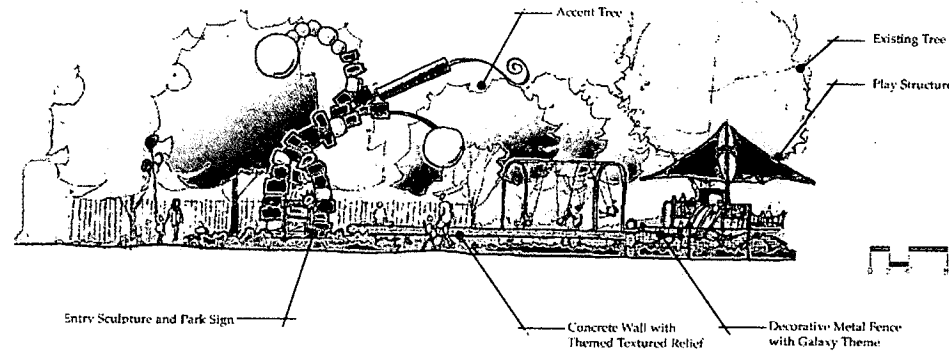
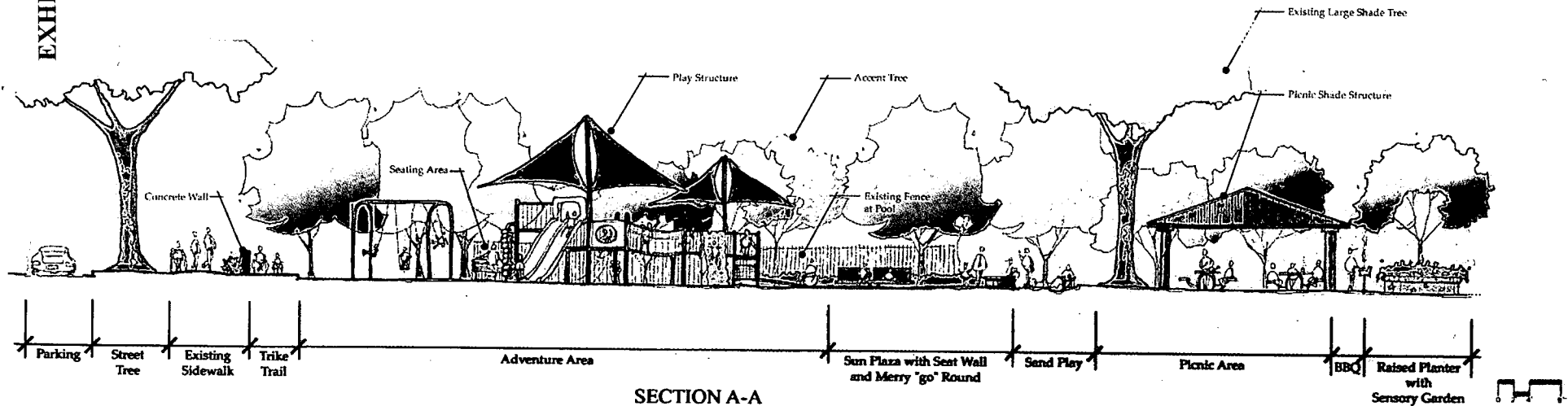


EXHIBIT B



**RESOLUTION NO.**

**ADOPTED BY THE SACRAMENTO CITY COUNCIL**

**ON DATE OF: \_\_\_\_\_**

**RESOLUTION TO APPROVE  
THE SOUTHSIDE PARK ACCESSIBLE PLAYGROUND MASTER PLAN  
(CIP PN:LS52)**

The City Council of the City of Sacramento hereby approves the Master Plan for Southside Park Accessible Playground.

---

**MAYOR**

**ATTEST:**

---

**CITY CLERK**

---

**FOR CITY CLERK USE ONLY**

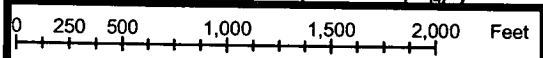
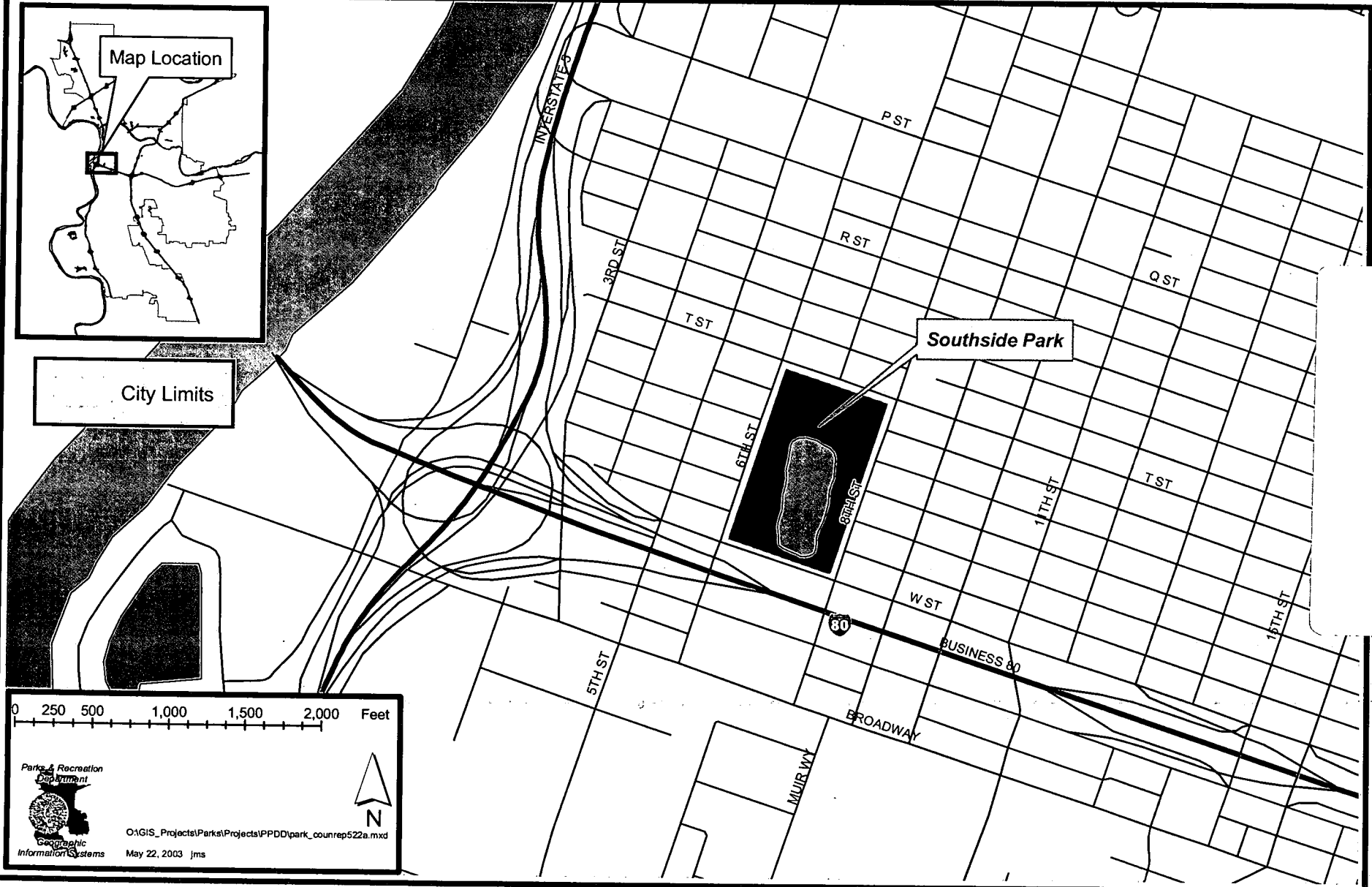
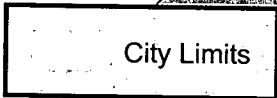
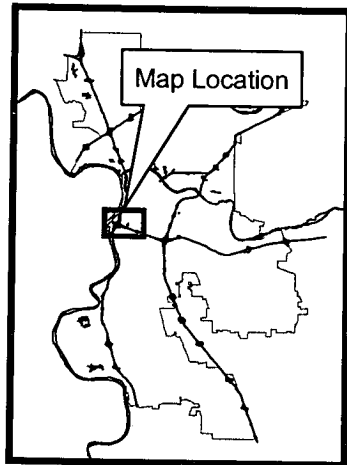
**Resolution No.:** \_\_\_\_\_

**Date Adopted:** \_\_\_\_\_





**City of Sacramento**  
**Department of Parks and Recreation**  
 Southside Park



O:\GIS\_Projects\Parks\Projects\PPDD\park\_counrep522a.mxd  
 May 22, 2003 Jms



EXHIBIT C

8