

## RESOLUTION NO. 2005-705

ADOPTED BY THE SACRAMENTO CITY COUNCIL

September 27, 2005

**AMENDING THE NORTH NATOMAS COMMUNITY PLAN LAND USE MAP TO REDESIGNATE FROM 5.84± GROSS ACRES EMPLOYMENT CENTER 40 TO 5.84± GROSS ACRES VILLAGE COMMERCIAL WITHIN THE NATOMAS CROSSING AREA II PLANNED UNIT DEVELOPMENT, LOCATED IN NORTH NATOMAS, SOUTHWEST CORNER OF TRUXEL ROAD AND NATOMAS CROSSING DRIVE SACRAMENTO, CALIFORNIA. (APN: 225-1250-009) (P04-131)**

### BACKGROUND

The City Council conducted a public hearing on September 27, 2005 concerning the above plan amendment and based on documentary and oral evidence submitted at the public hearing, the Council hereby finds:

- A. The proposed land use amendment is compatible with the surrounding land uses;
- B. The subject site is suitable for commercial development; and
- C. The proposal is consistent with the policies of the North Natomas Community Plan and the General Plan.

### BASED ON THE FACTS SET FORTH IN THE BACKGROUND, THE CITY COUNCIL RESOLVES AS FOLLOWS:

Section 1. The property (APN: 225-1250-009), as described on the attached Exhibit A, within the City of Sacramento are hereby re-designated on the North Natomas Community Plan land use map from 5.84± gross acres Employment Center 40 to 5.84± gross acres Village Commercial within the Natomas Crossing Area II Planned Unit Development.

### Table of Contents:

Exhibit A: North Natomas Community Plan Amendment Exhibit – 1 page

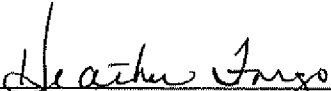
Adopted by the City of Sacramento City Council on September 27, 2005 by the following vote:

Ayes: Councilmembers Cohn, Hammond, McCarty, Sheedy, Tretheway, Waters and Mayor Fargo.

Noes: None

Abstain: None

Absent: Councilmember Fong and Pannell

  
\_\_\_\_\_  
Mayor Heather Fargo

Attest:

  
\_\_\_\_\_  
Shirley Concolino, City Clerk

EXHIBIT A – North Natomas Community Plan Amendment

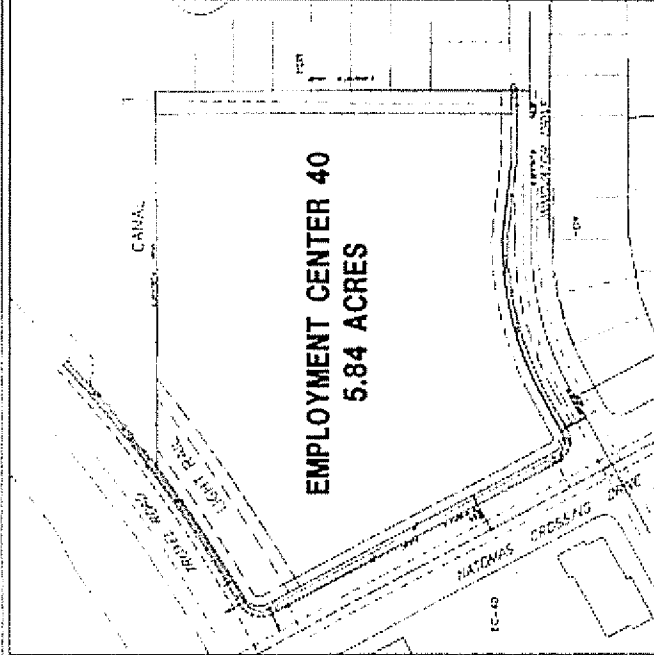
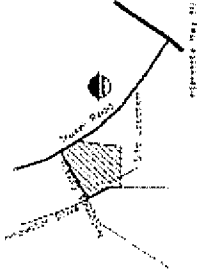
# California Family Fitness

Sacramento, California

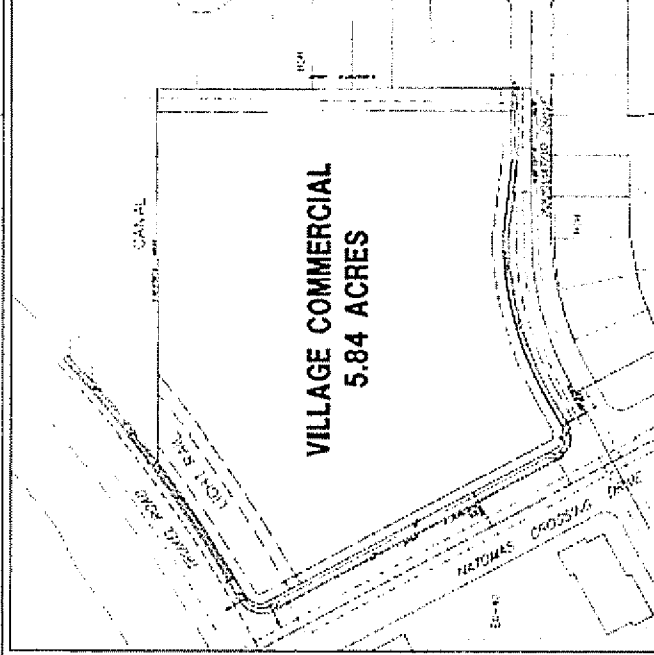
## COMMUNITY PLAN AMENDMENT EXHIBIT

July 2, 2004

Vicinity Map



Existing Community Plan



Proposed Community Plan

**General Information**

PROJECT: Village Commercial & Employment Center 40  
 PREPARED BY: [Firm Name]  
 DATE: [Date]  
 SCALE: [Scale]  
 SHEET NO.: [Sheet Number]

