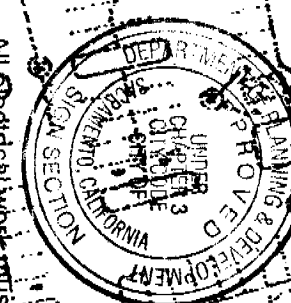
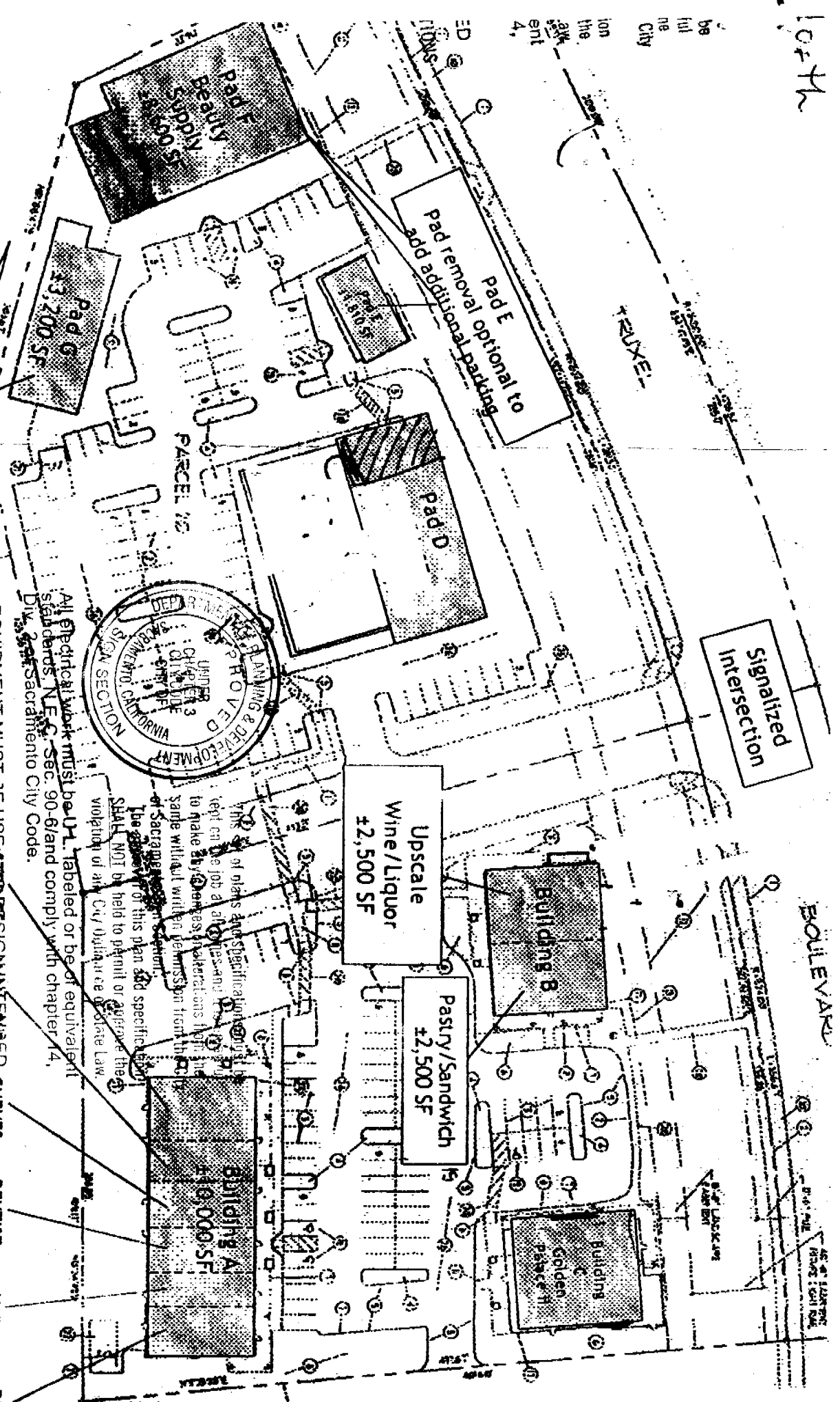


104th

be full the City

#F-1 941
#200827
041521
4321
CITY COPY

Pad G
Pad removal optional to
add additional parking



All electrical work must be UL labeled or be of equivalent standards. NEC Sec. 90-6/and comply with chapter 14, Div. 2 of Sacramento City Code.

EQUIPMENT MUST BE USED IN ACCORDANCE WITH THE FOLLOWING TABLE FOR CURVES

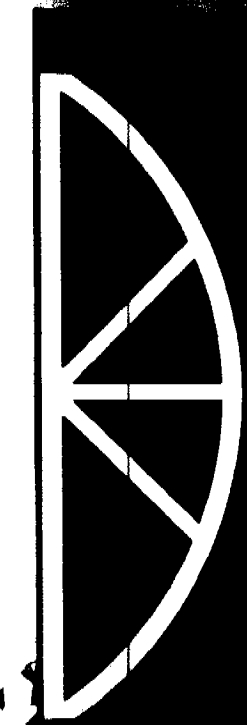
2,604 SF	1,364 SF	1,364 SF	1,023 SF	1,62
FOR MEN	FOR WOMEN	DENTIST	NAIL SALON	CLE

For information call
The Retail Services Team

Rick Martinez (916) 446-8233
Jon Schultz (916) 446-8261
Josh Schim (916) 446-8

SECTION

USE CREDIT UNION



THE APPROVAL OF ALL ELECTRICAL WORK IS SUBJECT TO FIELD INSPECTIONS.



APPLE SIGNS

55 GARDIA COURT, STE. - F
SACRAMENTO, CA 95823

Phone: 916.982-9005
Fax: 916.681-9776
E-mail: apple@apple-signs.com

OSHP License # 020883

PROJECT:
USE CREDIT UNION

LOCATION:
4321 TRUXEL ROAD #F-1
SACRAMENTO, CA

SCALE:
1/4" = 1'

DATE:
8-02-04

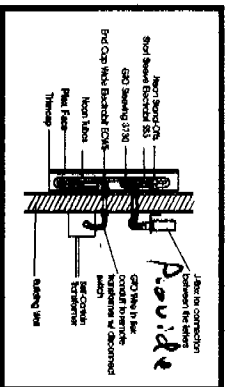
NOTE:

See attached

APPROVED PER 1941
NATIONAL ELECTRICAL CODE
AND CITY OF SACRAMENTO
AMENDMENTS
9/16/04 STB

ELECTRICAL DIVISION

*4 to 8 screw 1/2 x 1/4"
for back letter*



SHALL NOT be held responsible for violation of any City Ordinance or State Law.
FABRICATE & INSTALL SET OF PAN CHANNEL LETTER, 5" ALUMINUM BLACK RETURN, 3/4" BLACK TRIMCAP, 3/16" WHITE PLEXIGLAS UNFINISHED WITH WHITE ENamel. EQUIPMENT MUST BE USED WITH MAINTENANCE. ALL WORK IS SUBJECT TO FIELD INSPECTIONS.

APPROVED BY:

PAGE: 1 of 1