



CITY OF SACRAMENTO

37

DEPARTMENT OF PERSONNEL
PERSONNEL MANAGEMENT SERVICES DIVISION
901 NINTH STREET, ROOM 210
SACRAMENTO, CALIF. 95814
TELEPHONE (916) 448-5726/5729

CITY MANAGER'S OFFICE
RECEIVED
JAN 10 1980

DONNA L. GILES
DIRECTOR OF PERSONNEL

January 7, 1980

City Council
Sacramento, California

Honorable Members in Session:

SUBJECT: NEW CLASSIFICATIONS FOR THE WORKERS' COMPENSATION UNIT
IN THE PERSONNEL DEPARTMENT

SUMMARY

The City Council, on December 18, 1979, approved Resolution No. 79-878. The attached Resolutions provide for the establishment of the necessary classifications for the new unit within the Personnel Department.

BACKGROUND INFORMATION

City Resolution No. 79-878 establishes a Workers' Compensation unit within the Department of Personnel. The existing Contract with the City's Claims Administrator terminates effective August 1, 1980. The Workers' Compensation unit will be staffed by two specialists in the Workers' Compensation field. The Supervisor of the unit will be called a Supervising Workers' Compensation Claims Representative. The position in this classification will be exempt from Civil Service. In addition to the Supervisor's position, there will be a Workers' Compensation Claims Representative. The Civil Service Board, on January 2, 1980, approved the new classification.

The attached Resolutions provide for the establishment of the new classifications in addition to the assignment of the supervising position to the exempt listing of classifications.

FINANCIAL DATA

The City Council previously transferred the necessary funds from the Unappropriated Risk Management Fund Balance to the Department of Personnel for the Workers' Compensation unit. There will be no additional costs during the 1979-80 fiscal year.

APPROVED
BY THE CITY COUNCIL

JAN 15 1980

OFFICE OF THE
CITY CLERK

City Council
January 7, 1980
Page 2

RECOMMENDATION

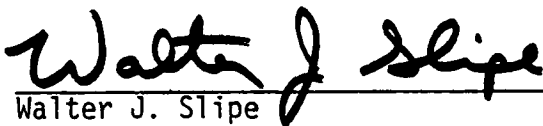
It is recommended that the City Council adopt the attached Resolutions to establish the classifications necessary for the Workers' Compensation unit.

Respectfully submitted,



Donna L. Giles
Director of Personnel

RECOMMENDATION APPROVED:



Walter J. Slipe
City Manager

DLG/sch

· attachments

January 15, 1980
All Districts



RESOLUTION No. 80-045

Adopted by The Sacramento City Council on date of

January 15, 1980

A RESOLUTION AMENDING RESOLUTION NO. 79-438
DATED JULY 3, 1979, RELATING TO CLASSIFICATIONS,
COMPENSATION RATES AND SALARY RANGES

BE IT RESOLVED BY THE COUNCIL OF THE CITY OF SACRAMENTO:

Effective January 19, 1980, the following classifications are
added to the listing of classifications:

PERSONNEL

<u>Code No.</u>	<u>Department and Class Title</u>	<u>Salary Schedule No.</u>	<u>Range No.</u>	<u>Approx. Monthly Salary Range</u>
10021	Workers' Compensation Claims Representative	VIII	9	\$1437-1749
14080	Supervising Workers' Compensation Claims Representative	XIII	5	\$1724-2099

MAYOR

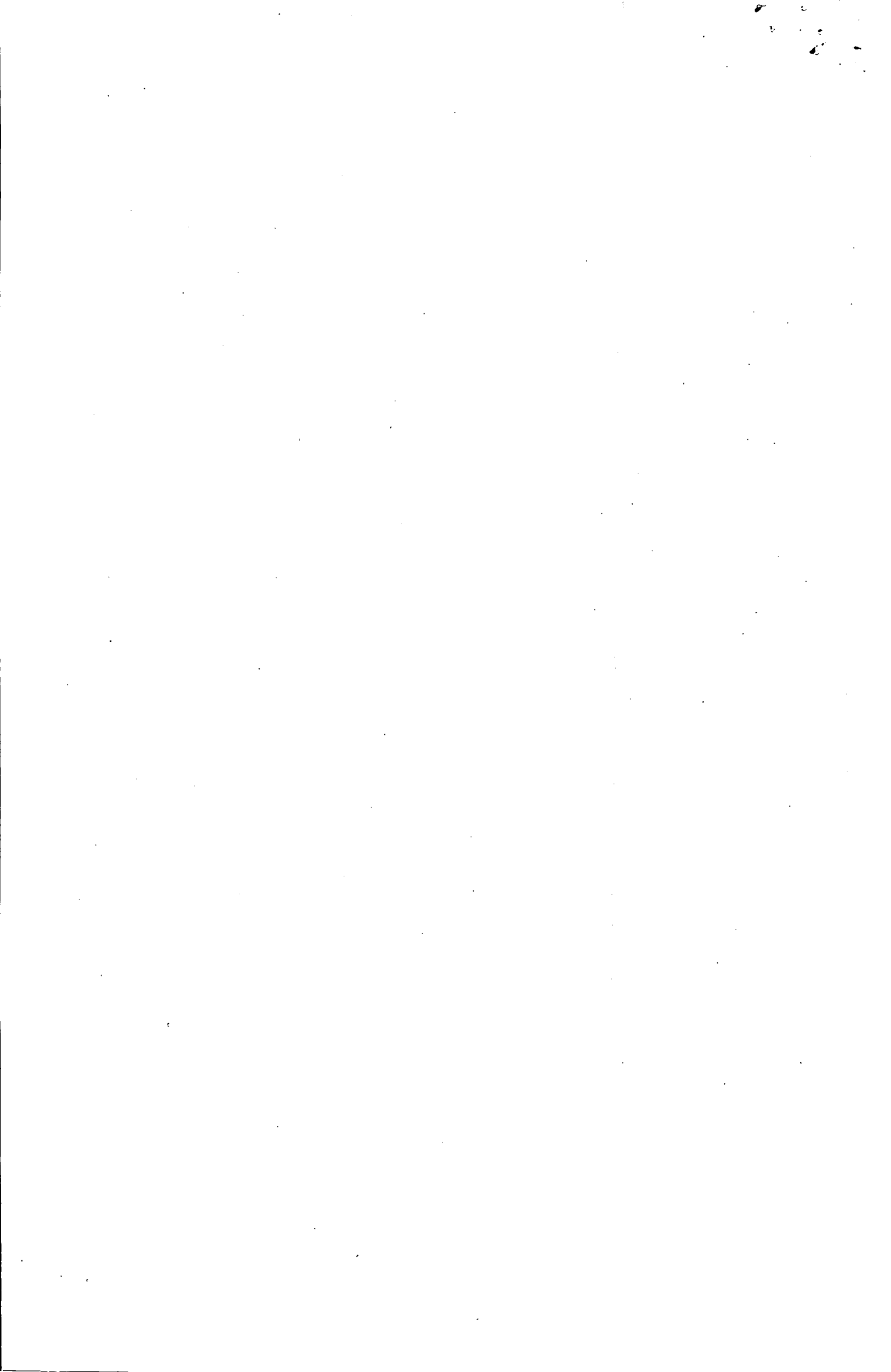
STTEST:

CITY CLERK

APPROVED
BY THE CITY COUNCIL

JAN 15 1980

OFFICE OF THE
CITY CLERK



RESOLUTION No. 80-046

Adopted by The Sacramento City Council on date of

January 15, 1980

A RESOLUTION AMENDING RESOLUTION
NO. 75-164 RELATING TO THE
DESIGNATION OF EXEMPT EMPLOYEES

BE IT RESOLVED BY THE COUNCIL OF THE CITY OF SACRAMENTO:

Resolution No. 75-164 is hereby amended by adding the following
classification to the list of exempt classifications:

SUPERVISING WORKERS' COMPENSATION CLAIMS REPRESENTATIVE

MAYOR

ATTEST:

CITY CLERK

APPROVED
BY THE CITY COUNCIL

JAN 15 1980

OFFICE OF THE
CITY CLERK