



APPROVED  
BY THE CITY COUNCIL

JAN 26 1999

OFFICE OF THE  
CITY CLERK

1.4

DEPARTMENT OF  
UTILITIES  
  
ENGINEERING SERVICES

CITY OF SACRAMENTO  
CALIFORNIA

1395 - 35TH AVENUE  
SACRAMENTO, CA  
95822-2911

PH 916-264-1400  
FAX 916-264-1497

AG-99-019

January 8, 1999

City Council  
Sacramento, California

Honorable Members in Session

**SUBJECT: OVERALL PROJECT AND CONTRACT MANAGEMENT OF CITY WATER FACILITIES EXPANSION PROJECTS (PN:ZF41, PN:ZF46, PN:ZF51, PN:ZF56, and PN:ZE31) - TRANSFER FUNDS AND APPROVE A CONSULTANT SERVICES AGREEMENT WITH MONTGOMERY WATSON FOR AN AMOUNT NOT TO EXCEED \$1,546,017**

**LOCATION AND COUNCIL DISTRICT: Citywide**

**RECOMMENDATION:**

Staff recommends that the City Council:

- \* Approve transfer of funds from Treatment Capacity Expansion Reserve (PN:ZE22)
- \* Adopt the attached resolution authorizing the City Manager and City Clerk to execute a Consultant Services Agreement with Montgomery Watson for an amount not to exceed \$1,546,017

**CONTACT PERSON:** Gary A Reents, Engineering Services Manager, 264-1433  
Gary E Gosse, Supervising Engineer, 264-1426

**FOR COUNCIL MEETING OF:** January 26, 1999

**SUMMARY:**

Staff has negotiated a Consultant Services Agreement with Montgomery Watson to perform overall project and contract management of four City water facility projects and an update of a Sacramento River watershed sanitary survey. The projects are:

City Council  
January 8, 1999  
Approval of Consultant Services Agreement

- \* Expansion of E A Fairbairn Water Treatment Plant (PN:ZF41)
- \* Modification of E A Fairbairn Water Treatment Plant Intake (PN:ZF46)
- \* Expansion of Sacramento River Water Treatment Plant (PN:ZF51)
- \* Replacement Intake for Sacramento River Water Treatment Plant (PN:ZF56)
- \* Sacramento River Watershed Sanitary Survey Update (PN:ZE31)

Authorization for the City Manager and City Clerk to execute the agreement is requested.

**COMMITTEE / COMMISSION ACTION:**

None

**BACKGROUND INFORMATION:**

Pre-design studies have been updated for a 100 mgd expansion of the E A Fairbairn Water Treatment Plant (1997) and a 60 mgd expansion of the Sacramento Water Treatment Plant (1998). Engineering feasibility studies and environmental documentation are also nearly complete for projects to upgrade the fish screens at the water intakes for the E A Fairbairn and Sacramento River Water Treatment Plants.

The City water facility projects are to be designed and constructed in phases beginning with the Sacramento River WTP expansion and the replacement intake and access bridge. In addition, the Sacramento River Watershed Sanitary Survey done in 1995 needs to be updated. Design work for modification of the intake at the E A Fairbairn WTP as well as the expansion of the Fairbairn WTP is to begin at a later date.

On May 20, 1998 a request for statement of qualifications was issued for design of four City water facilities expansion projects. A short list of four engineering consulting firms was developed from the qualification statements received. In August and September 1998, City staff made site visits to water treatment plants designed by key project team members of the short-listed consultants. Consultant interviews were held on September 11, 1998.

The result of the City's consultant selection process was that the project team of Montgomery Watson in combination with Carollo Engineers and CH2M-Hill was selected for the design of the City water facility expansion projects.

City Council  
January 8, 1999  
Approval of Consultant Services Agreement

Consultant service agreements are to be executed with Montgomery Watson for:

- \* Overall Project and Contract Management
- \* Design of Sacramento River WTP Expansion Project
- \* Design of E A Fairbairn WTP Intake Modification

Consultant services agreements are to be executed with CH2M-Hill for the design of the Sacramento River WTP Replacement Intake and Carollo Engineers for the design of the E A Fairbairn WTP Expansion project.

**FINANCIAL CONSIDERATIONS:**

The estimated cost of the Consultant Services Agreement with Montgomery Watson is \$1,546,017. Staff recommends that funds in the amount of \$2,000,000 be transferred from the Treatment Capacity Expansion Reserve (413-500-ZE22-4820), which has an unobligated balance of \$12,424,036 as of January 6, 1999, to the following Capital Improvement projects:

E A Fairbairn WTP Expansion (413-500-ZF41-4802)	\$ 300,000
EAFWTP Intake Modification (413-500-ZF46-4802)	\$ 300,000
Sacramento River WTP Expansion (413-500-ZF51-4802)	\$ 200,000
SRWTP Intake Replacement (413-500-ZF56-4802)	\$1,000,000
Sacramento River Watershed Sanitary Survey (413-500-ZE31-4802)	\$ 200,000

**ENVIRONMENTAL CONSIDERATIONS:**

Environmental documents for the City's water facilities expansion projects are being prepared consistent with the California Environmental Quality Act. An Environmental Impact Report for the treatment plant expansion projects and an Environmental Assessment for the intake fish screen upgrade projects will be presented to the City Council for approval prior to construction of the facilities.

City Council  
January 8, 1999  
Approval of Consultant Services Agreement

**POLICY CONSIDERATIONS:**

The firms of Montgomery Watson along with Carollo Engineers and CH2M-Hill were selected to perform design work on the four City water facility expansion projects through an open request for qualifications (RFQ) process.

**MBE / WBE:**

All potential consultants were informed of the City's policy to have MBE and WBE participation. The project team of Montgomery Watson includes 4.2 percent MBE and 17.1 percent WBE participation.

Psomas & Associates (MBE)

Lucy (Roberts) Eidam (WBE)  
Archibald & Wallberg (WBE)

Montgomery Watson identified the tasks of public relations, sanitary survey, fishery resources, surveying, and permitting in the scope of services that could be subcontracted. The identified subcontracted work constitutes 38.2 percent of the total value of the overall project and contract management work.

The City goal of 9.5 percent WBE was exceeded although the City goal of 10.57 percent MBE was not met. Montgomery Watson has retained the services of City certified MBE / WBE firms where possible. A description of Montgomery Watson's efforts for MBE / WBE participation is covered in their letter enclosed with this staff report.

Respectively submitted,



Gary A. Reents  
Engineering Services Manager

RECOMMENDATION APPROVED:

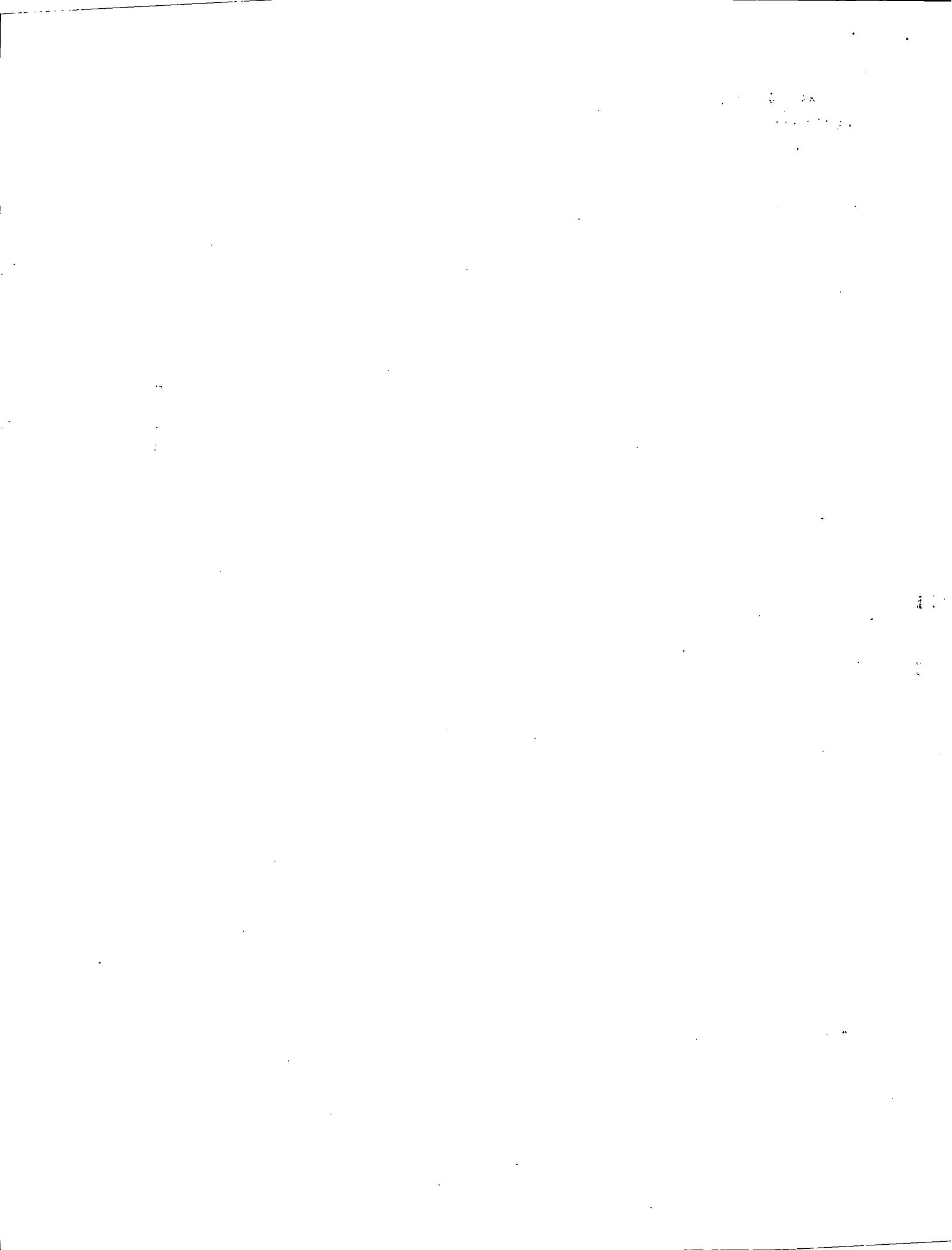
APPROVED:



WILLIAM H. EDGAR  
City Manager



JAMES G. SEQUEIRA  
Director of Utilities



**RESOLUTION NO. 99-037**

**APPROVED**  
BY THE CITY COUNCIL

ADOPTED BY THE SACRAMENTO CITY COUNCIL

**JAN 26 1999**

ON DATE OF \_\_\_\_\_

OFFICE OF THE  
CITY CLERK

APPROVE TRANSFER OF FUNDS, AND AUTHORIZE THE CITY MANAGER AND CITY CLERK TO EXECUTE A CONSULTANT SERVICES AGREEMENT WITH MONTGOMERY WATSON FOR OVERALL PROJECT AND CONTRACT MANAGEMENT OF CITY OF SACRAMENTO'S WATER FACILITY EXPANSION PROJECTS FOR AN AMOUNT NOT-TO-EXCEED \$1,546,017.

BE IT RESOLVED BY THE SACRAMENTO CITY COUNCIL THAT:

- 1. Funds in the amount of \$2,000,000 are hereby transferred from the Treatment Capacity Expansion Reserve (413-500-ZE22-4820) to the following Capital Improvement Projects:

E A Fairbairn WTP Expansion (413-500-ZF41-4802)	\$ 300,000
EAFWTP Intake Modification (413-500-ZF46-4802)	\$ 300,000
Sacramento River WTP Expansion (413-500-ZF51-4802)	\$ 200,000
SRWTP Intake Replacement (413-500-ZF56-4802)	\$1,000,000
Sacramento River Watershed Sanitary Survey (413-500-ZE31-4802)	\$ 200,000

- 2. The City Manager and City Clerk are authorized to sign and execute a Consultant Services Agreement with Montgomery Watson for Overall Project and Contract Management for an amount not to exceed \$1,546,017.

\_\_\_\_\_  
MAYOR

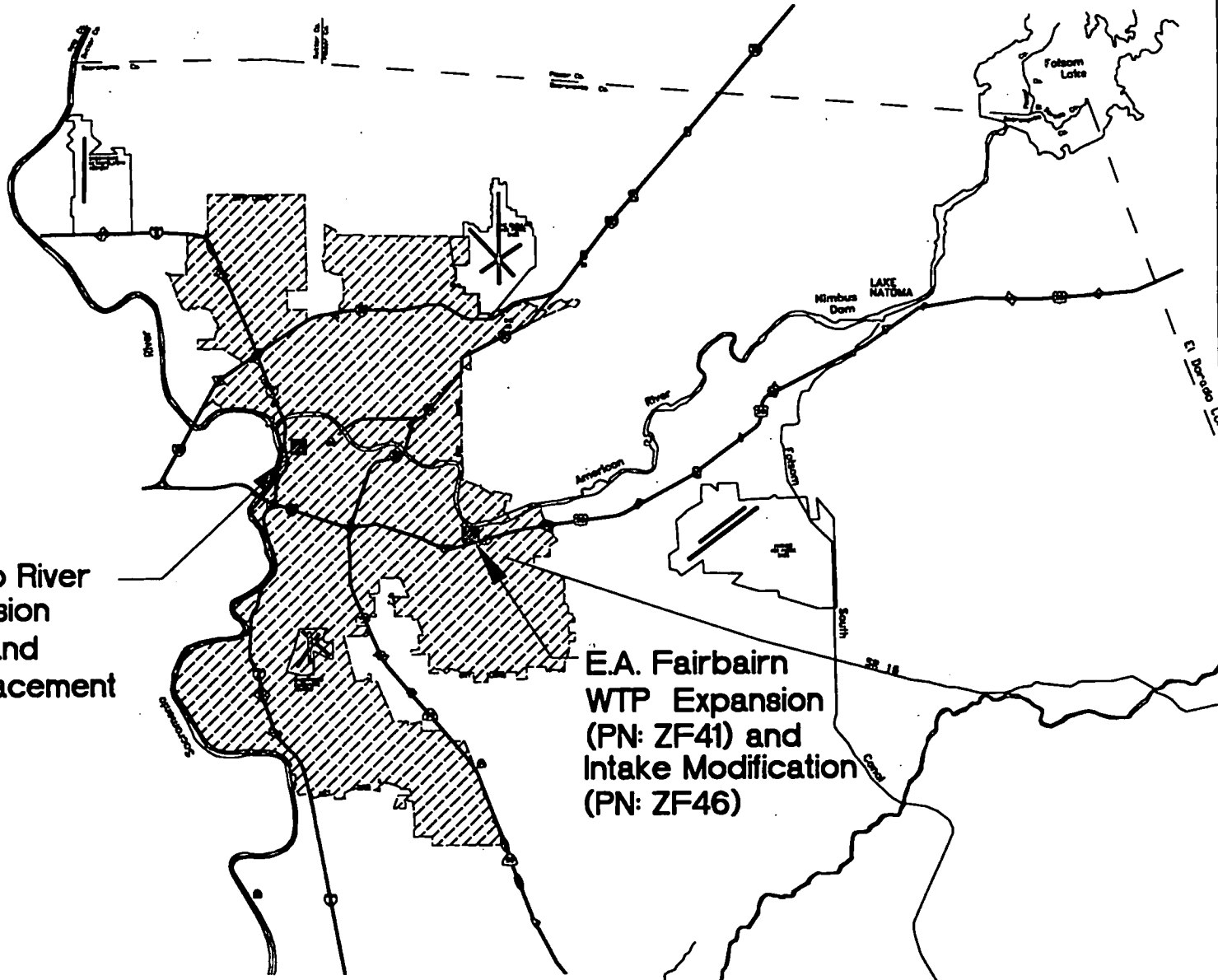
ATTEST:

\_\_\_\_\_  
CITY CLERK

\_\_\_\_\_  
FOR CITY CLERK USE ONLY

RESOLUTION NO. \_\_\_\_\_

DATE ADOPTED: \_\_\_\_\_



Sacramento River  
WTP Expansion  
(PN: ZF51) and  
Intake Replacement  
(PN: ZF56)

E.A. Fairbairn  
WTP Expansion  
(PN: ZF41) and  
Intake Modification  
(PN: ZF46)

**CITY WATER FACILITY EXPANSION PROJECTS**  
**E.A. FAIRBAIRN AND SACRAMENTO RIVER**  
**WATER TREATMENT PLANTS AND INTAKES<sup>o</sup>**

6



January 5, 1999

Mr. Gary Gosse  
Supervising Engineer  
City of Sacramento  
Department of Utilities  
Engineering Services  
1395 35<sup>th</sup> Avenue  
Sacramento, CA 95822-2911

**Subject: Overall Project Management/Contract Management  
Consultant and Professional Services Agreement  
MBE/WBE Participation**

Dear Mr. Gosse:

Montgomery Watson is pleased to have been selected for the Overall Project Management/Contract Management for the four water supply expansion projects. The management of major water supply expansion projects is a complex and challenging undertaking that requires knowledgeable and experienced professionals. We have carefully assembled a comprehensive team of qualified and experienced engineers, architects, and specialists to provide the necessary professional services for this project.

Montgomery Watson is cognizant and supportive of the MBE and WBE participation goals of 10.57 percent and 9.5 percent, respectively, established by the City. We have maximized the MBE/WBE participation by initially identifying those support services and professional disciplines that would be logical candidates for MBE/WBE participation. The subconsultants were subsequently selected based on their availability as offered by the City's certification list of MBE/WBE firms and their capability to provide sufficient expertise and resources to conduct the requisite work.

The candidate support services and professional disciplines, the selected subconsultants, their MBE/WBE status, and budgets are listed as follows:

<b>Support Service/ Professional Discipline</b>	<b>Selected Subconsultant</b>	<b>Status</b>	<b>Budget</b>
Surveying/Legal Descriptions	Psomas & Associates	MBE	\$65,000
Public Relations	Lucy Roberts Public Relations	WBE	\$180,000
Sanitary Survey	Archibald and Wallberg	WBE	\$85,000
<b>Total</b>			<b>\$330,000</b>



Mr. Gary Gosse


-2-

January 5, 1999

The estimated amount for the MBE/WBE candidate support services and professional disciplines is \$330,000 or 21.3 percent of the total budget. This amount compares favorably to the combined MBE/WBE participation goal of 20.07 percent. The magnitude of the MBE and WBE participation outlined above is significant and substantial. Montgomery Watson looks forward to the involvement and contribution of our MBE and WBE subconsultants.

Please contact me at (916) 921-3520 if you have any questions.

Sincerely,

A handwritten signature in cursive script that reads "Donald Spiegel".

Donald Spiegel  
Vice President

/ddk