

APPROVED
BY THE CITY COUNCIL

JAN 27 1998

OFFICE OF THE
CITY CLERK



1.2

CITY OF SACRAMENTO
CALIFORNIA

DEPARTMENT OF
PUBLIC WORKS

TECHNICAL SERVICES DIVISION

DEVELOPMENT
SERVICES
1231 I STREET, STE 200
SACRAMENTO, CA
95814-2988
PH 916-264-7995
FAX 916-448-8450

January 13, 1998

City Council
Sacramento, California

Honorable Members In Session:

SUBJECT: APPROVAL OF PARCEL MAP ENTITLED "CONVENTION CENTER PLAZA" -
(P92-268)

LOCATION/COUNCIL DISTRICT:

13th, 15th, J and L Streets
Council District 1

RECOMMENDATION:

This report recommends that the attached resolution for the Parcel Map for Convention Center Plaza be approved.

CONTACT PERSON:

Jerry Lovato, Engineering Technician III, 264-7918
Jon Blank, Associate Engineer, 264-7493

FOR COUNCIL MEETING OF:

January 27, 1998

SUMMARY:

On March 16, 1993, the City Council approved a Tentative Parcel Map by adopting Resolution No. 93-129. All conditions of the tentative map have been met by the City of Sacramento. The Convention Center expansion has been completed and this action adjusts the lot lines and abandons a portion of 14th Street beneath the expansion project in accordance with Resolution No. 93-129. The Parcel Map requires approval by the City Council.

City Council
Parcel Map (P92-268)
January 13, 1998

COMMITTEE/COMMISSION ACTION:

None.

BACKGROUND:

On March 16, 1993, the City Council approved a Tentative Parcel Map by adopting Resolution No. 93-129. Pursuant to Sacramento City Code, Chapter 40.08.813, and Government Code Section 66458, the City Council may, by resolution, approve parcel maps. The map presented conforms to all the requirements of the Government Code and Title 40 of the City Code, applicable at the time of conditional approval of the Tentative Map. The Parcel Map is consistent with the Central City Community Plan. All conditions in the staff subdivision report have been met and the Parcel Map is presented for approval.

FINANCIAL CONSIDERATIONS:

All subdivision costs are being paid by the City of Sacramento.

ENVIRONMENTAL CONSIDERATIONS:

An Environmental Impact Report and a Supplemental Impact Report were prepared for the Sacramento Convention Center Expansion Project. This project is consistent with the actions analyzed in the EIR's completion for the Convention Center expansion. A Mitigation Monitoring Plan has been adopted for the expansion project.

POLICY CONSIDERATIONS:

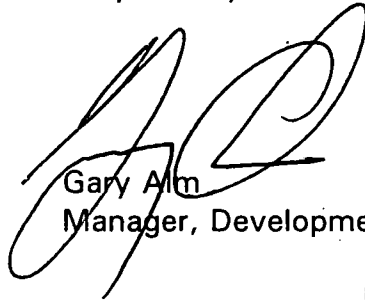
Pursuant to Sacramento City Code, Chapter 40.08.813, and Government Code Section 66458, the City Council may, by resolution, approve parcel maps. The map presented conforms to all the requirements of the Government Code and Title 40 of the City Code, applicable at the time of conditional approval of the Tentative Map.

City Council
Parcel Map (P92-268)
January 13, 1998

MBE/WBE:

None, since no goods or services are being procured with this action.

Respectfully submitted,



Gary Alm
Manager, Development Services

RECOMMENDATION APPROVED:

APPROVED:



WILLIAM H. EDGAR
City Manager



Michael Kashiwagi
Director of Public Works

JL:dt
convctr-p92-268
01.0698.1

Attachment

APPROVED
BY THE CITY COUNCIL

JAN 27 1998

OFFICE OF THE
CITY CLERK

RESOLUTION NO. 98-021

ADOPTED BY THE SACRAMENTO CITY COUNCIL

ON DATE OF _____

APPROVING PARCEL MAP ENTITLED "CONVENTION CENTER PLAZA" (P92-268)

WHEREAS, THE COUNCIL OF THE CITY OF SACRAMENTO FINDS AND DETERMINES AS FOLLOWS:

- A. The Parcel Map entitled "Convention Center Plaza", located at blocks bounded by 13th, 15th, J and L Streets, with provisions for its design and improvement, is consistent with the Central City Community Plan.
- B. The Parcel Map is in substantial compliance with the previously approved tentative parcel map. See Exhibit A.

NOW, THEREFORE, BE IT RESOLVED BY THE COUNCIL OF THE CITY OF SACRAMENTO AS FOLLOWS:

- 1. The Parcel Map is hereby approved.
- 2. All offers of dedication shown on said map are hereby accepted.

MAYOR

ATTEST:

CITY CLERK

Convctr.p92-268
01.0698.1

FOR CITY CLERK USE ONLY

RESOLUTION NO.: _____

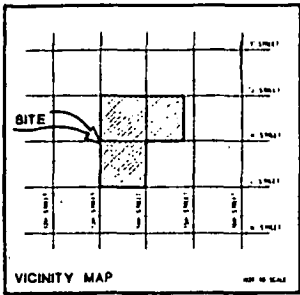
DATE ADOPTED: _____

P92-268

JANUARY 14, 1993

1009

#



NOTE:
THIS AREA SHOWN ON ASSESSORS PARCEL MAPS AS RIGHT-OF-WAY OF 13th STREET. NO DOCUMENTATION HAS BEEN FOUND TO DATE TO SUPPORT THAT THE RIGHT-OF-WAY EXISTS. THIS AREA WILL BE OFFERED FOR DEDICATION WITH THE PARCEL MAP IF THE CITY OF SACRAMENTO REQUESTS.

OWNER:
 A.P.N. 008-0113-15
 SACRAMENTO CITY PUBLIC FACILITIES
 FINANCING CORP
 815 Y STREET
 SACRAMENTO, CA 95811

A.P.N. 008-0113-16
 CITY OF SACRAMENTO
 14th STREET
 SACRAMENTO, CA 95811

A.P.N. 008-0113-17
 SACRAMENTO CITY FINANCING AUTHORITY
 827 10th STREET, STE. 200
 SACRAMENTO, CA 95811

A.P.N. 008-113-1 THRU 3, 10 THRU 15
 CITY OF SACRAMENTO
 827 10th STREET, STE. 200
 SACRAMENTO, CA 95811

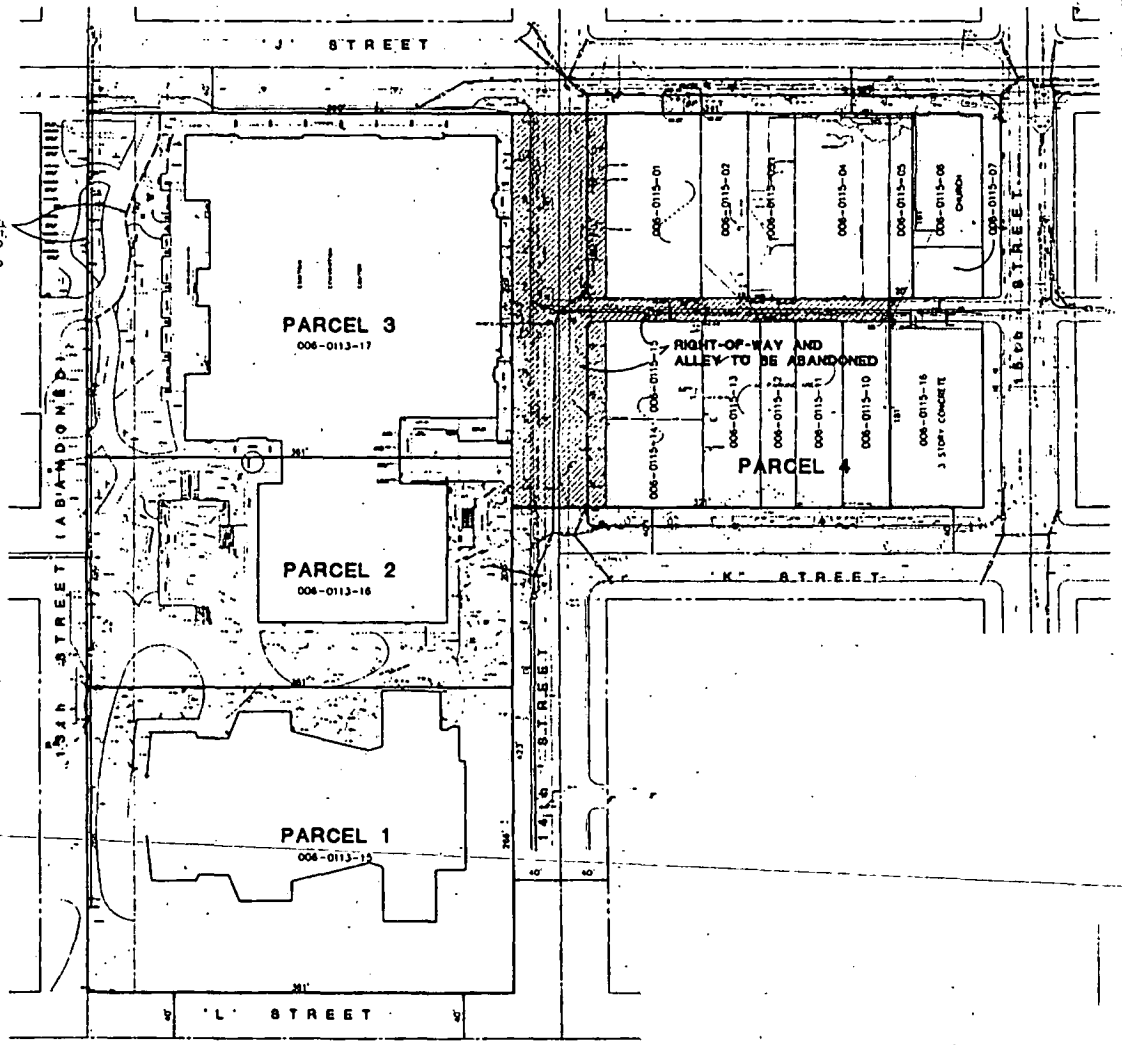
SUBDIVIDER:
 CITY OF SACRAMENTO
 627 10th STREET, STE. 200
 SACRAMENTO, CA 95811

ENGINEER:
 NOLTE & ASSOCIATES
 1700 CLEVELAND QUAYS DRIVE, SUITE 200
 SACRAMENTO, CA 95833

EXISTING ZONING: C3
PROPOSED ZONING: C3
EXISTING USE: CONVENTION CENTER, VACANT
PROPOSED USE: CONVENTION CENTER
WATER SUPPLY: CITY OF SACRAMENTO
SEWAGE DISPOSAL: CITY OF SACRAMENTO
FIRE PROTECTION: CITY OF SACRAMENTO

NOTES:

1. THE PURPOSE OF THIS MAP IS TO ABANDON THE EXISTING RIGHTS-OF-WAY AND ALLEYS AS SHOWN ON THIS MAP IN ACCORDANCE WITH THE PROVISIONS OF THE SUBDIVISION MAP ACT AND MERGE SAID RIGHTS-OF-WAY AND ALLEYS WITH PARCEL 4.
2. PARCELS 1, 2 AND 3 OF THIS MAP REFLECT EXISTING PARCELS OWNED BY THE CITY OF SACRAMENTO AND ARE MADE A PART OF THIS PARCEL MAP AT THE REQUEST OF THE CITY OF SACRAMENTO.



TENTATIVE PARCEL MAP

BLOCKS BOUNDED BY 'J' STREET, 'L' STREET, 13th STREET AND 14th STREET

AND
'J' STREET, 'K' STREET, 14th STREET AND 15th STREET

CITY OF SACRAMENTO, COUNTY OF SACRAMENTO, CALIFORNIA

AUGUST, 1992

SCALE: 1"=50'

NOLTE and ASSOCIATES
 Engineers / Planners / Surveyors

1100 N. ST. 1100 N. ST. 1100 N. ST. 1100 N. ST.

EXHIBIT A