

RESOLUTION NO. 2004-085

ADOPTED BY THE SACRAMENTO CITY COUNCIL

ON FEB 10 2004

RESOLUTION APPROVING MAP OF PROPOSED BOUNDARIES OF ANNEXATION NO. 1 TO THE NEIGHBORHOOD WATER-QUALITY DISTRICT NO. 2003-03

RECITALS:

- A. The City Council has previously formed the Neighborhood Water-Quality District No. 2003-03 (formerly named the Meadowview Estates Maintenance District No. 2003-03) under chapter 3.124 of the Sacramento City Code (Chapter 3.124).
- B. Hofmann Land Development Company, Inc., a California corporation ("Landowner"), is the owner of all land within the Steamship Bend Subdivision. One of the conditions of approval for this subdivision requires the Landowner to annex it to the Neighborhood Water-Quality District No. 2003-03. To fulfill this condition, Landowner has presented a petition to the city requesting that the city commence proceedings for annexing to the district, in accordance with Chapter 3.124, the land generally described in Exhibit A.
- C. The city has installed or acquired or will subsequently install or acquire, within the Steamboat Bend Subdivision, the public improvements described in Exhibit B (the Improvements). To finance the cost of providing the maintenance services specified in Exhibit B for these improvements (the Services), and as requested by the Landowner, the City Council proposes to annex to the district the territory within the Steamboat Bend Subdivision.
- D. By Resolution No. 2004-084, and in response to the Landowner's petition, the City Council (1) initiated proceedings to annex to the district the land generally described in Exhibit A; (2) designated the Director of Public Works to be the Engineer for purposes of the annexing the land to the district and levying any assessment to finance the Services; and (3) directed the Engineer to prepare and file with the City Clerk a map of the annexed territory, as required by section 3110 of the Streets and Highways Code.

FOR CITY CLERK USE ONLY

RESOLUTION NO.: 2004-085

DATE ADOPTED: FEB 10 2004

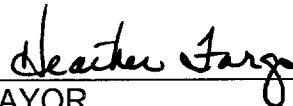
E. As directed, the Engineer has prepared and filed with the City Clerk a map that shows the proposed boundaries of the annexed territory. The map is entitled "Boundary Map, Annexation No. 1 to the Neighborhood Water-Quality District No. 2003-03," and a copy of it is attached as Exhibit C. The City Clerk has presented the map to the City Council for consideration.

BASED ON THE FOREGOING RECITALS, THE CITY COUNCIL OF THE CITY OF SACRAMENTO RESOLVES AS FOLLOWS:

Section 1. The City Council finds and determines that the recitals set forth above are true.

Section 2. The City Council approves the map entitled "Boundary Map, Annexation No. 1 to the Neighborhood Water-Quality District No. 2003-03," a copy of which is attached as Exhibit C, and directs the City Clerk to endorse on the map a certificate evidencing the date and adoption of this resolution.

Section 3. Exhibits A, B, and C are part of this resolution.


MAYOR

ATTEST:


CITY CLERK

FOR CITY CLERK USE ONLY

RESOLUTION NO.: 2004-085

DATE ADOPTED: FEB 10 2004

EXHIBIT A

GENERAL DESCRIPTION OF TERRITORY TO BE ANNEXED

All that real property situate in the City of Sacramento, County of Sacramento, State of California, described as follows:

The subdivision map entitled "Steamboat Bend Unit No. 2", recorded on December 23, 2003 in Book 323 of Maps, Map number 7, records of Sacramento County.

The subdivision map entitled "Steamboat Bend Unit No. 3", recorded on December 23, 2003 in Book 323 of Maps, Map number 8, records of Sacramento County.

FOR CITY CLERK USE ONLY

RESOLUTION NO.: 2004-085

DATE ADOPTED: FEB 10 2004

EXHIBIT B

DESCRIPTION OF IMPROVEMENTS AND SERVICES

The work described below is to be carried out when the improvements (e.g., landscaping, irrigation systems, post & cable, and water quality drainage swale) are installed and dedicated to the City. The work will be performed in the landscaped area on Cavalier Drive adjacent to the channel and adjacent to Rosehall Way, and is more particularly described in plans and specifications approved by the City of Sacramento and on file at the City of Sacramento's Department of Parks and Community Services, 1231 "I" Street, Room 400, Sacramento, California 95814.

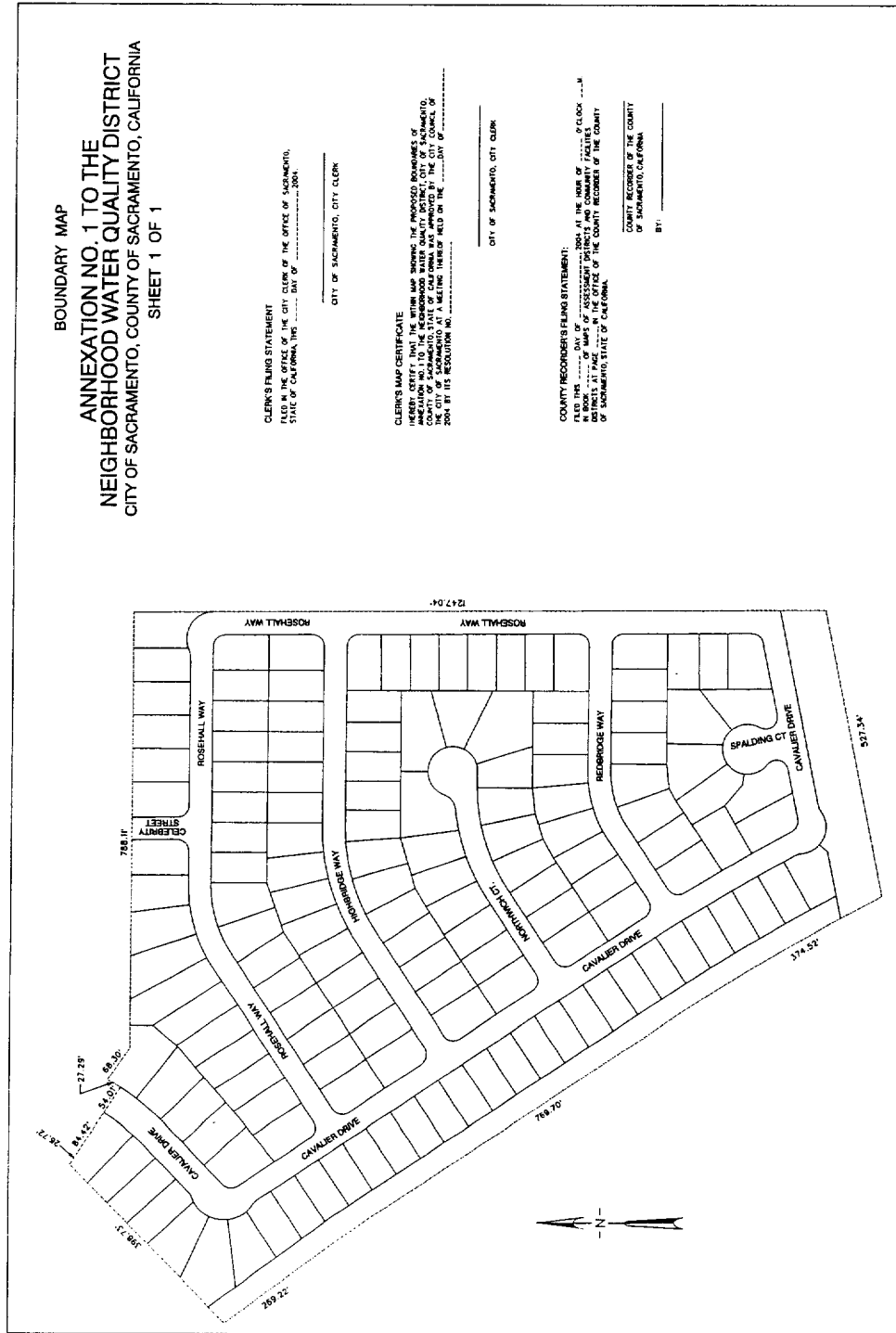
The work to be performed consists of furnishing all tools, equipment, apparatus, facilities, labor, material, supplies, and utilities necessary or desirable to maintain the landscaping and irrigation systems. Maintenance work may include but not be limited to periodic mowing of grass, trimming of trees and shrubs, and fertilizing, together with the regular furnishing of water for irrigation of all plant material, and the repair, maintenance, replacement of the post & cable, irrigation systems, planted materials, and amenities, and cleaning of the water quality drainage swale.

FOR CITY CLERK USE ONLY

RESOLUTION NO.: 2004-085

DATE ADOPTED: FEB 10 2004

EXHIBIT C BOUNDARY MAP



FOR CITY CLERK USE ONLY

RESOLUTION NO.: 2004-085

DATE ADOPTED: FEB 10 2004