

38TH STREET

SIDEWALK

SIDEWALK

3846

3848

DRIVEWAY

43.37'

WALK

14'

10'

14'

28'

PROPOSED DEN ADDITION

20'

5'

8'

←

Vacant

Lot 461

40'

Lot 460

8'

20'

LINE TO BE DELETED  
(LEAVING ONE PARCEL)

24'

SCALE: 3/4" = 10'

P86111

Please retype.

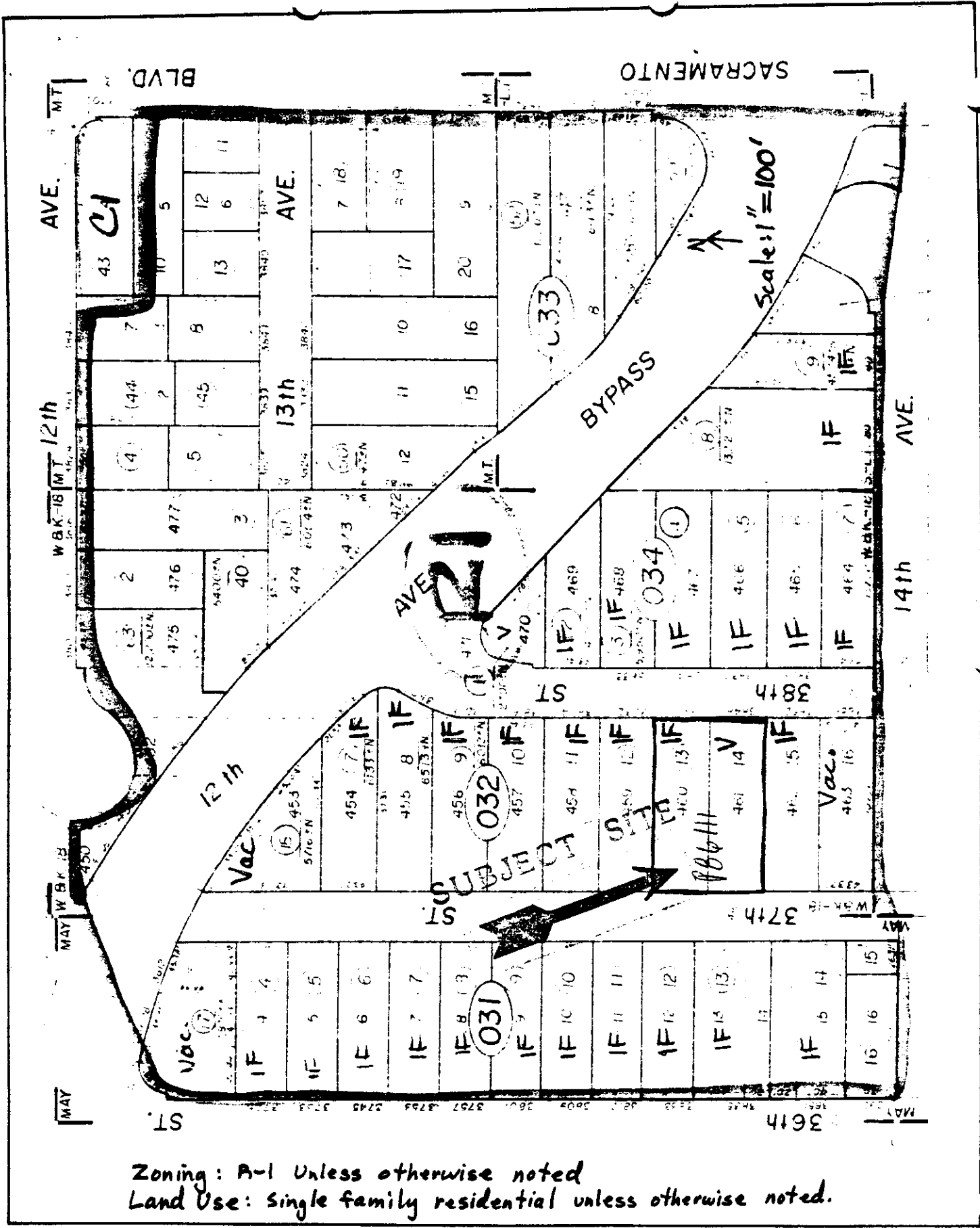
T. Hanks  
Dun

**EXHIBIT A**

New legal Description

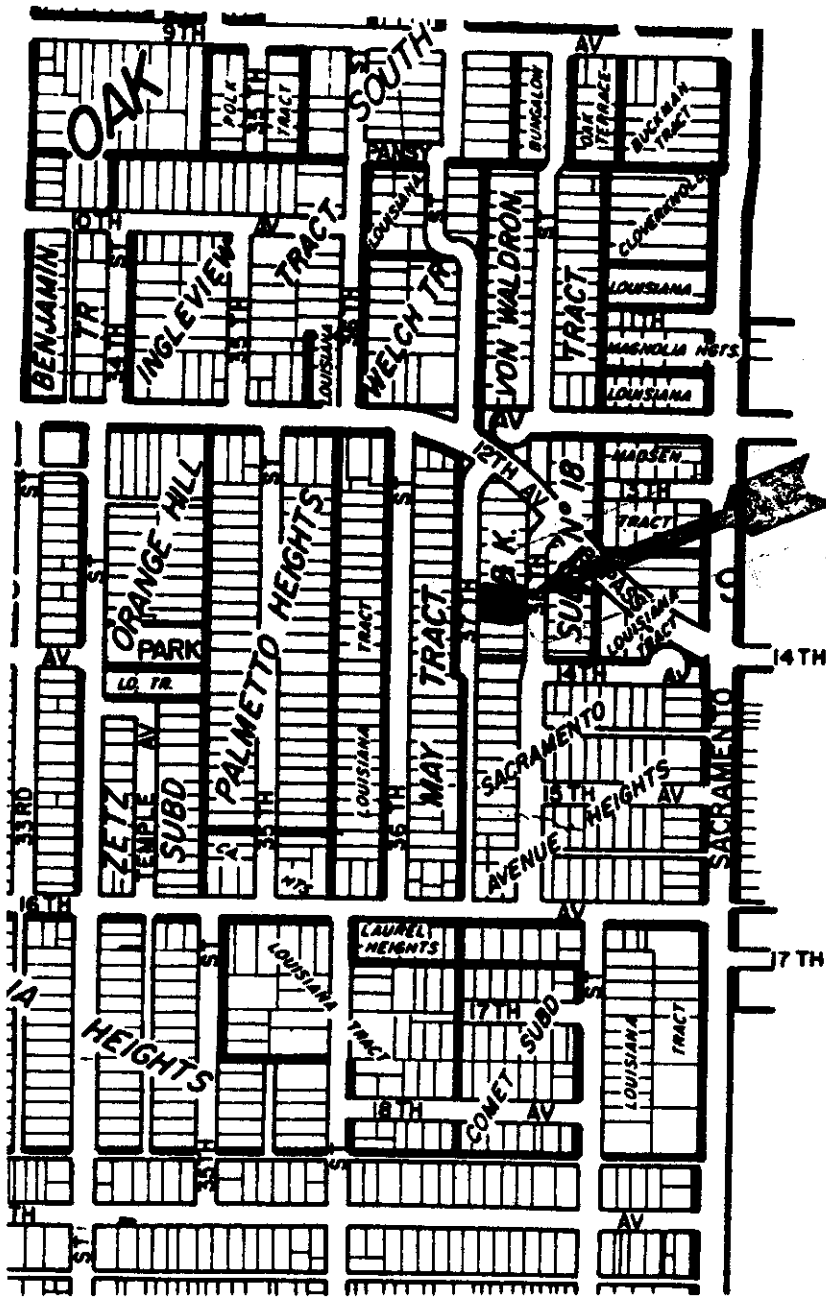
Legal Description of Subject Site:

Lots 461 + Lot 461 Wright & Kimbrough, Sub 18,  
City of Sacramento.



Zoning: A-1 Unless otherwise noted  
 Land Use: Single family residential unless otherwise noted.

# LAND USE & ZONING MAP



UT SITE



Scale: 1" = 500'

VICINITY MAP

RESOLUTION NO.

Adopted by the Sacramento City Planning Commission

on date of

APPROVING A LOT LINE ADJUSTMENT TO MERGE LOTS 460  
AND 461 OF THE WRIGHT & KIMBROUGH SUBDIVISION NO. 18  
AS RECORDED IN THE OFFICIAL BOOK OF MAPS, CITY OF SACRAMENTO  
(P86-111)

WHEREAS, the Planning Director has submitted to the Planning Commission a report and recommendation concerning the lot line adjustment for property located at 3846 and 3848-38th Street; and

WHEREAS, the lot line adjustment is exempt from environmental review pursuant to State EIR Guidelines (CEQA, Section 15305(a)); and

WHEREAS, the project is found to be consistent with the City's Discretionary Interim Land Use Policy in that the site is designated for residential use by the 1974 City General Plan and the proposed Lot Line Adjustment to merge two lots conforms with the plan designation.

NOW, THEREFORE, *See resolution* BE IT RESOLVED by the Planning Commission of the City of Sacramento:

that the lot line adjustment to merge property located at 3846 and 3848-38th Street, City of Sacramento, be approved as shown and described in Exhibits A and B attached hereto, subject to the following condition:

Pay off any existing assessments

\_\_\_\_\_  
CHAIR

ATTEST:

\_\_\_\_\_  
SECRETARY TO CITY PLANNING COMMISSION