

RESOLUTION NO. 2007-819

Adopted by the Sacramento City Council

November 13, 2007

MEISTER TERRACE NEIGHBORHOOD TRAFFIC MANAGEMENT PROGRAM PROJECT APPROVAL (PN: TI16)

BACKGROUND

- A. The Neighborhood Traffic Management Program (NTMP) was adopted by City Council in December 1995 and officially began in May 1996.
- B. The Meister Terrace Neighborhood NTMP Project (PN: TI16) began in May 2006. The project has followed the NTMP guidelines established by Council resolution. Exhibit A identifies project boundaries.
- C. A traffic calming plan has been designed by residents serving on the Traffic Calming Committee and voted on by neighborhood residents with a 67.7% approval rate. Exhibit B (attached) is the ballot.

BASED ON THE FACTS SET FORTH IN THE BACKGROUND, THE CITY COUNCIL RESOLVES AS FOLLOWS:

Section 1. The Meister Terrace NTMP Project (PN: TI16) is approved.

Table of Contents:

Exhibit A: Meister Terrace NTMP Location Map - 1 page

Exhibit B: Traffic Calming Plan Ballot - 1 page

Adopted by the City of Sacramento City Council on November 13, 2007 by the following vote:

Ayes: Councilmembers Cohn, Fong, Hammond, McCarty, Pannell, Sheedy, and Waters.

Noes: None.

Abstain: None.

Absent: Councilmember Tretheway and Mayor Fargo.



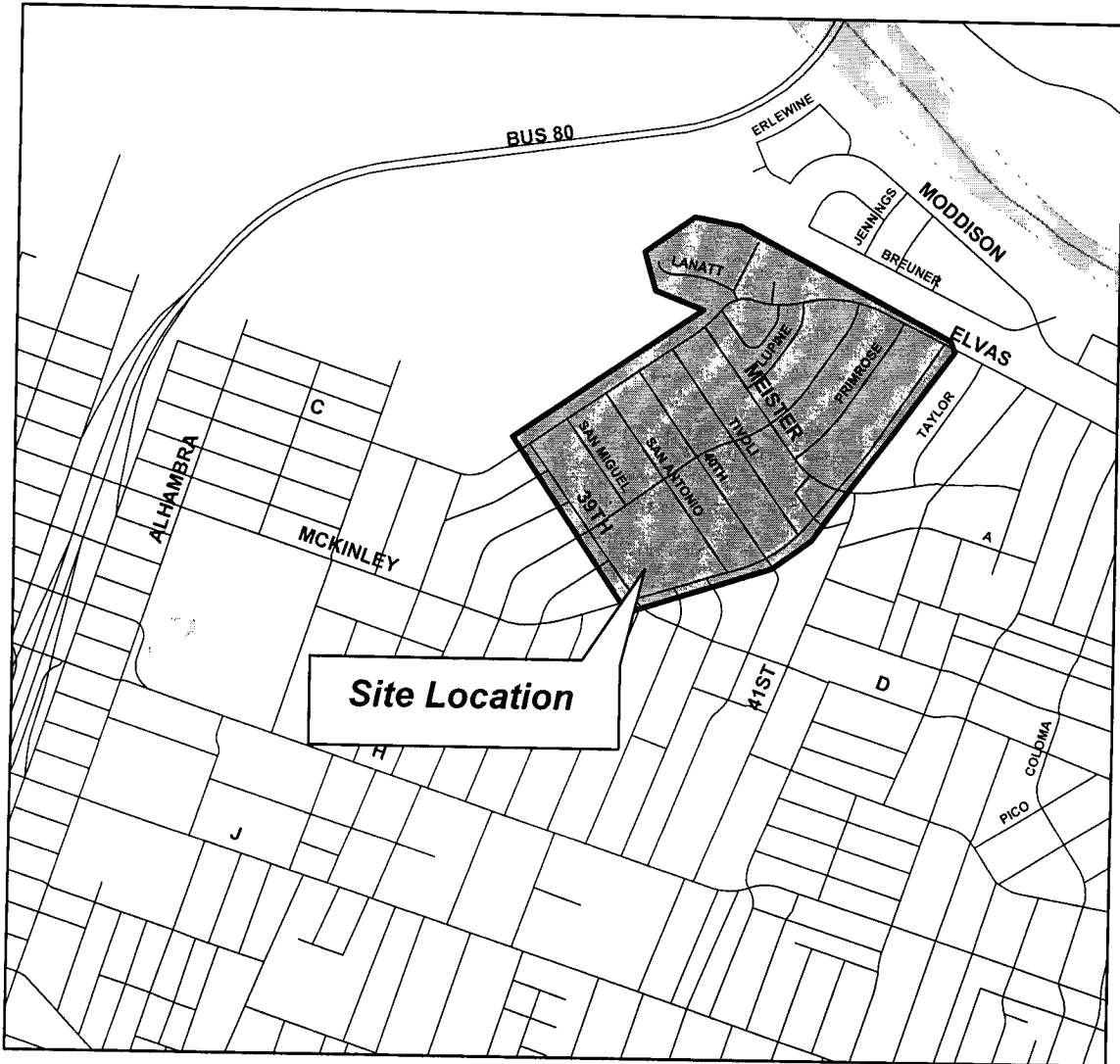
Kevin McCarty, Vice-Mayor

Attest:

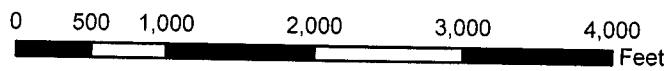


Shirley Concolino, City Clerk

Location map for
MEISTER TERRACE NTMP NEIGHBORHOOD
(PN:TI16)



Map Contact: Hamid Khalessi
Date: October 15, 2007



Do you want traffic calming measures in your neighborhood?

You have the opportunity to vote on a traffic calming plan for your neighborhood. This vote is to determine if the measures recommended by the Traffic Calming Committee (TCC), which consists of residents from your neighborhood, will be implemented.

The TCC assisted city staff in developing the plan. Various measures were reviewed and agreed upon by the TCC.

Your Vote Counts!

Every address (residence and business) within your neighborhood has received this notice and ballot. Now is your opportunity to vote for or against the proposed traffic calming measures.

You and your neighbors will decide whether or not the traffic calming measures will be implemented in your neighborhood.

If enough votes are in favor, the plan will be presented to City Council for review, final approval and funding. In order to pass, a minimum of 25% of all ballots must be returned with a simple majority in favor of the plan.

For more information call

(916) 808-8300

www.cityofsacramento.org/transportation

Proposed Measures for Your Neighborhood

Below are the recommended measures. If approved, the measures will be constructed at no cost to residents and/or homeowners. You are asked to vote in favor of or against the entire traffic calming plan which includes the following measures:

- ◆ C Street/Elvas Avenue Curve Treatment -
- ◆ Replace the existing curve warning signs located on C St east of Meister Wy and on Elvas Av opposite Lupine Wy, with radar activated curve warning LED blinker signs,
- ◆ Install an edge line on the north side of C St/Elvas Av through the curve at Lanatt St and extending to the tangent segments,
- ◆ Remove the existing curve warning and speed signs on westbound Elvas Av between 36th Wy & Primrose Wy.
- ◆ Stop Signs -
- ◆ Install two stop signs on Tivoli Wy at the intersection with 36th Wy.
- ◆ Speed Lumps -
- ◆ Install a speed lump on 39th St between D St & Santa Ynez Wy,
- ◆ Install a speed lump on 39th St between 36th Wy & McKinley Bl,
- ◆ Install two speed lumps on McKinley Bl between San Antonio Wy & Meister Wy.
- ◆ Speed Limit Signs and Legends -
- ◆ Relocate the existing 25 speed limit sign on McKinley Bl between Meister Wy & Elvas Av to just south of Elvas,
- ◆ Install a speed legend adjacent to the 35 mph speed limit sign on westbound Elvas Av opposite Primrose.
- ◆ Crosswalk Upgrade -
- ◆ Install "Slow Ped Xing" legends in advance of the crosswalk on C St at 39th St. Install crosswalk signs at the crosswalk.
- ◆ Neighborhood Signs, which remind drivers to "Drive Safely" in Meister Terrace. Install signs on:
 - ◆ C Street near 39th St,
 - ◆ McKinley Bl near Elvas Av,
 - ◆ McKinley Bl near 39th St.



It's easy to vote!

Tear off the ballot, cast your vote and drop it in the mail. (postage is paid).

Meister Terrace

One ballot per address.

My address

Yes - I am in favor of the measures indicated on this ballot.

No - I am not in favor of the measures indicated on this ballot.

Comments

All responses must be postmarked by

August 31, 2007

