

A large, semi-transparent watermark of the Sacramento Police Department badge is centered in the background. The badge is shield-shaped with a gold border. At the top, the word "POLICE" is written in large, bold, gold letters. Below this, a circular seal features a central figure holding a scale and a sword, surrounded by a cityscape. The text "CITY OF SACRAMENTO" is written around the top of the seal, and "FOUNDED IN 1849" is written around the bottom. The entire badge is rendered in a light, faded color.

POLICE

---


# Homeless and Mental Health Response

---


Lt. Dan Monk

# Historical Perspective

2014- We recognized that Homelessness and Mental Health was becoming a significant issue in our community. We began collecting data in order to ensure an evidence based response.



We created our Impact Team, which initially consisted of 2 officers and a Sergeant and was primarily focused in the downtown area.



Also started a pilot project called a “Mobile Crisis Support Team” in which one officer and one Sacramento County Clinician partnered together to address mental health calls in the downtown core.

# Impact Team Today

---

- 1 Sergeant and 6 Officers – Provide homeless outreach citywide.
- Impact Philosophy – Provide compassion and support to our homeless community while managing the needs / expectations of our residential and business communities.
- Our homeless response is complaint driven.
- Conduct outreach to those in need, align with services, and conduct/facilitate camp clean-ups.

2016 – 35,419 Calls for Service involving homelessness

2017 – 41,677 Calls for Service (17% increase)

2018 - 30,079 YTD (We are on pace for over 45,000 calls for service this year)

# Impact Partnerships

---



## Key Internal and External Partners:

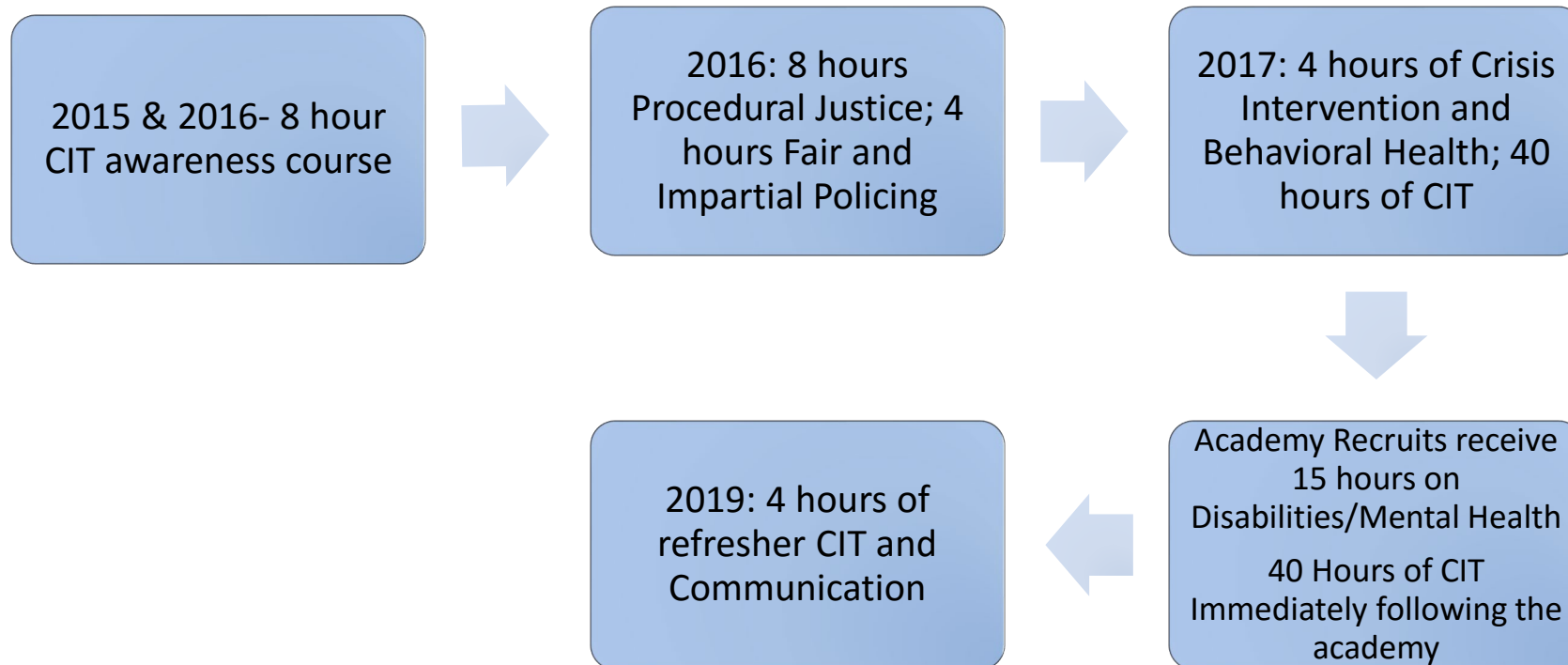
Pathways to Health and Home, Sacramento Steps Forward, County Department of Human Assistance, City Utilities, Solid Waste.

Property Based Improvement Districts (PBID's), Sacramento Sheriffs Department, Union Pacific Railroad, Sacramento County Mental Health Services, Mental Health Court, Veteran's Administration, Veterinarian Services, & Elica Medical Service.

# Mental Health Training



Crisis Intervention Training (CIT)-Training on interacting with crisis situations using de-escalation techniques that improve the safety of the mental health consumer, officers, and community.



# Mental Health Unit Today

One Sergeant and Three Officers ; One Mental Health Clinician; One Peer Navigator



Mobile Crisis Support Team-Respond city wide to mental health crisis calls

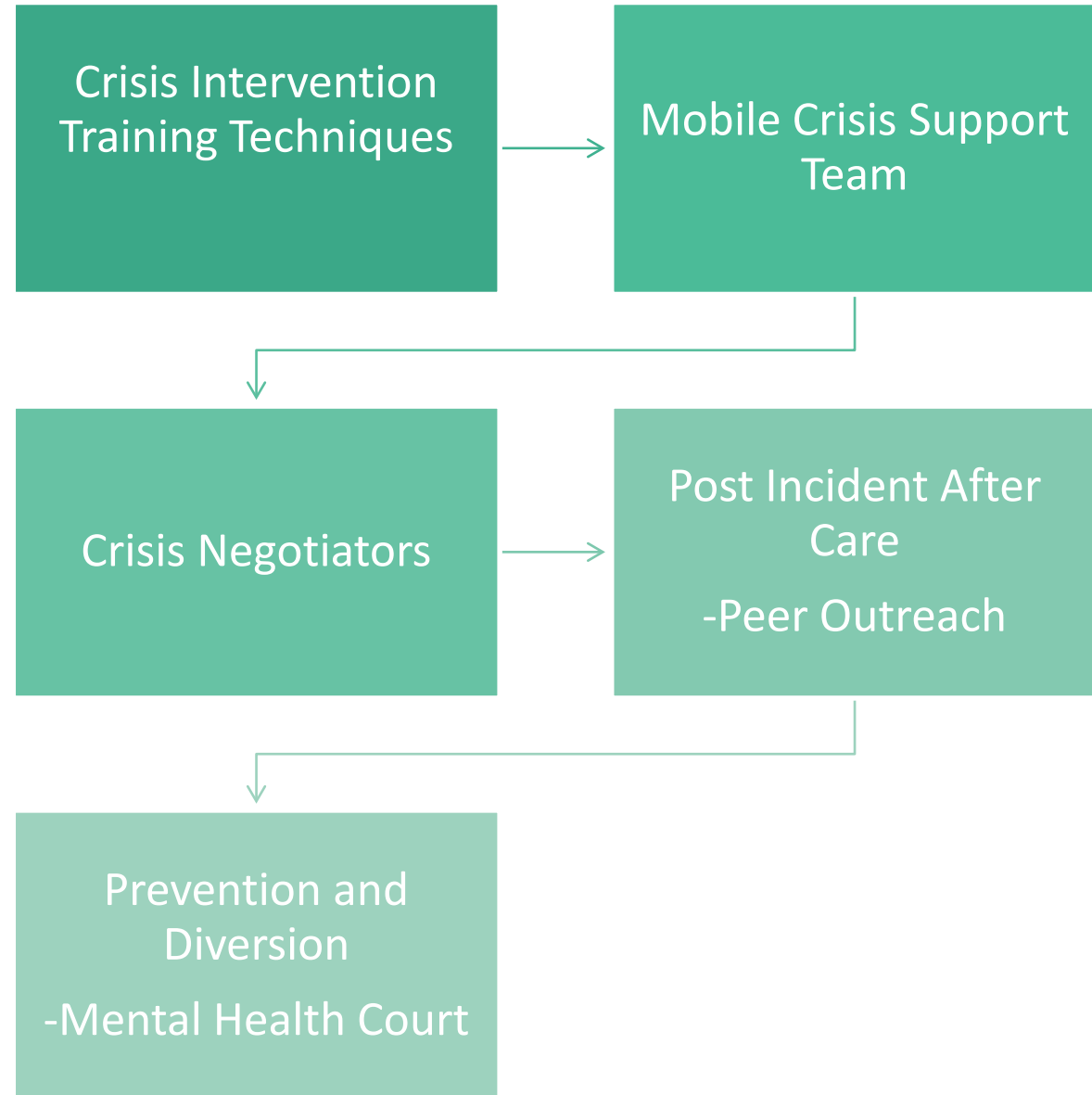


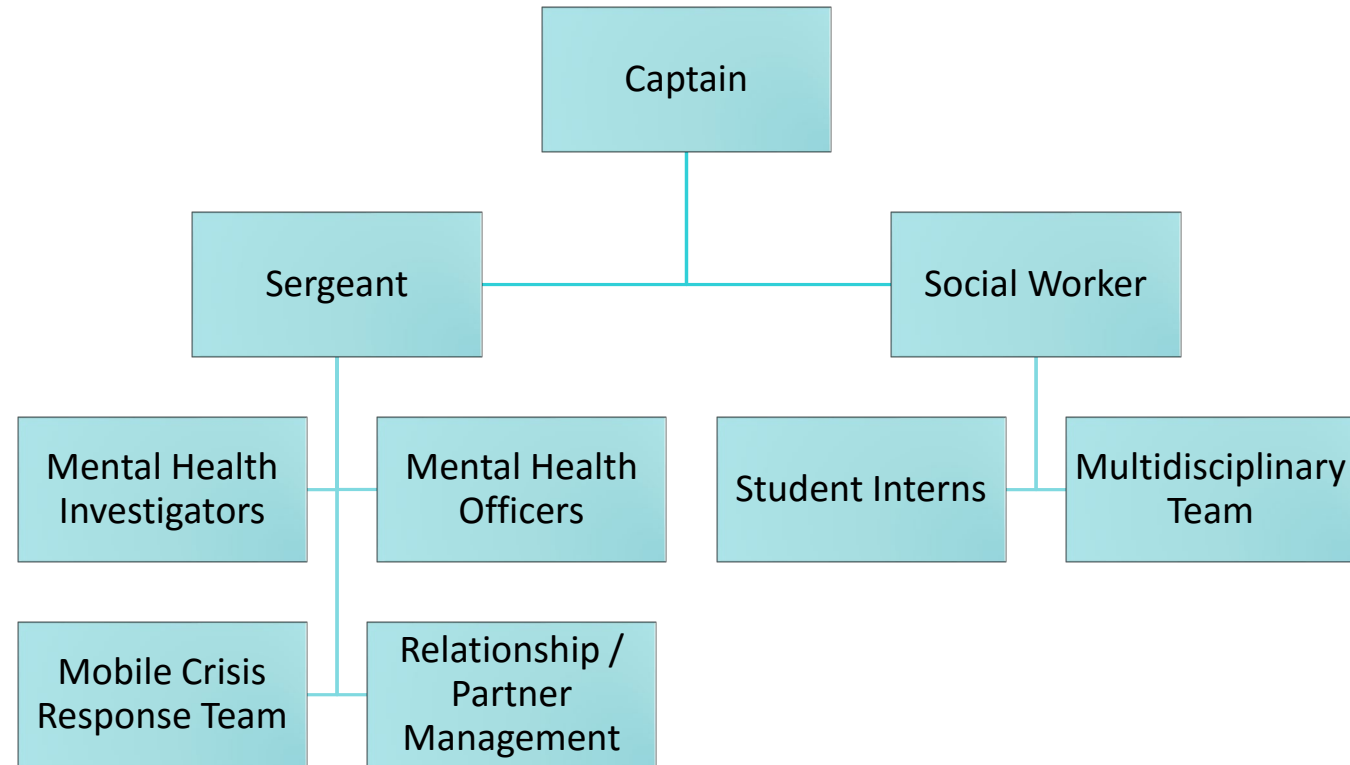
Mental Health Investigators-Follow-up with individuals that are suffering from mental illness and potentially violent threat to the community



Peer Navigator-An individual with lived mental health experience that helps align consumers with services.

# Mental Health Response





Where are we headed?



# Multidisciplinary Team

---

- A group of individuals from various agencies that will meet regularly to discuss prevention and intervention strategies for mental health consumers
  - Law Enforcement
  - Health & Human Services
  - County Mental Health
  - Probation/Parole
  - Victim Advocacy
  - Community Partners
  - School Representatives
  - Social Workers



# Questions?

---

Lt. Dan Monk

[dmonk@pd.cityofsacramento.org](mailto:dmonk@pd.cityofsacramento.org)

916-808-4502

