

Front Elevation "A"

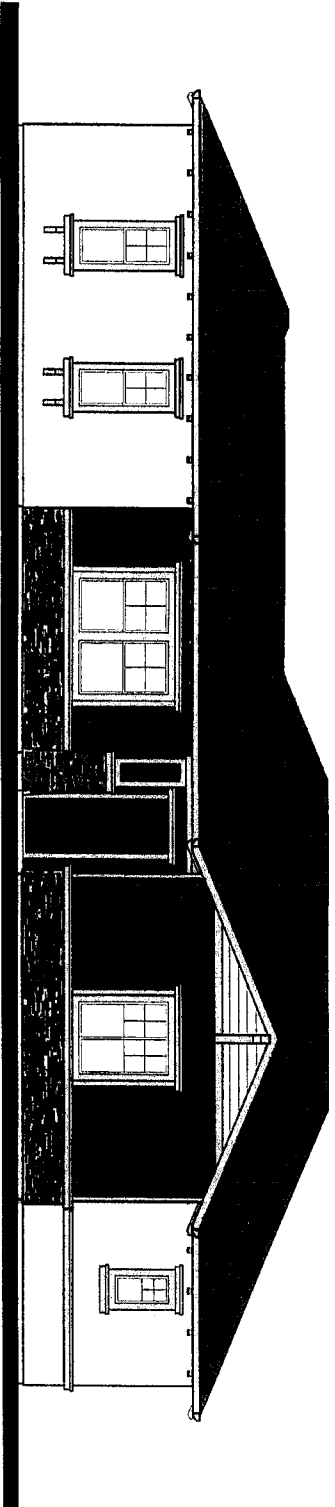
ELEVATION A MATERIALS	PAINT COLOR			BRICK	ROOF TILE
	BODY	TRIM	ACCENT		
SCHEME 1	KM4045-2	KM4002-1	KM4072-5	H.C. MUDDOX MENDOCINO	MONIER LETTLE CLAY BLEND VAC55169
SCHEME 2	KM4055-3	KM4010-1	KAS982-5		
SCHEME 3	KM4021-2	KM4047-3	KM4120-5		

PAINT REFERENCED IS KELLY-MOORE
 VENEER MATERIAL REFERENCED IS H.C. MUDDOX BRICK
 ROOFING MATERIAL REFERENCED IS MONIER LETTLE

REGIS HOMES
 THE ISLANDS AT RIVERLAKE

PLAN 7110
 EXTERIOR ELEVATION "A"
 Private Drive





Front Elevation "C"

ELEVATION / MATERIALS	PAINT COLOR:			STONE VENEER	ROOF TILE
	BODY	TRIM	ACCENT		
SCHEME 7	KM43989-2	KM43974-5	KM43976-5	CULTURED STONE	MONIER
SCHEME 8	KM44179-1	KM44190-3	ACC56-5	LEGGED STONE	CHARLETTA
SCHEME 9	KM44006-5	KM43956-5	KM43792-5	SOUTHERN LEDGESTONE CSV-2055	BROWN BLEND IFACS1152

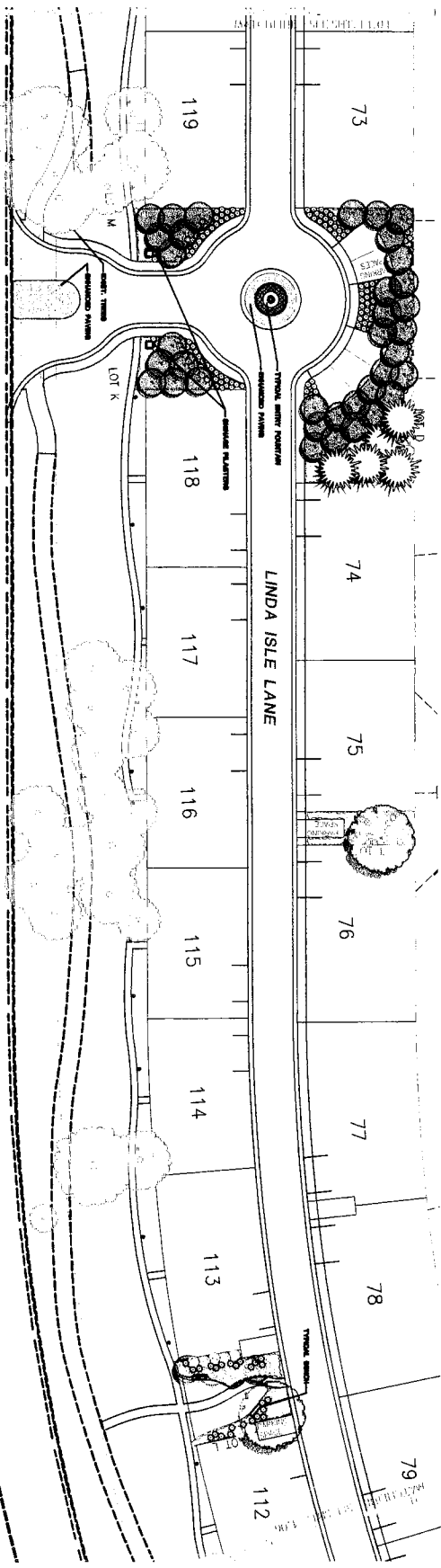
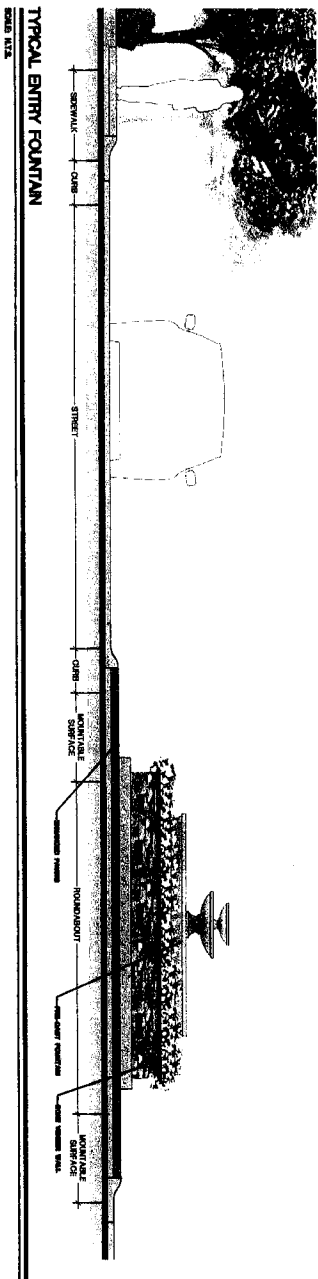
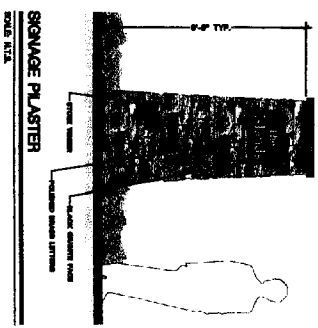
PAINT REFERENCED IS KELLY-MOORE
 VENEER MATERIAL REFERENCED IS CULTURED STONE
 ROOFING MATERIAL REFERENCED IS MONIER LIFETILE

REGIS HOMES
 THE ISLANDS AT RIVERLAKE

PLAN 7120
 EXTERIOR ELEVATION "C"
 Pocket Road



PHA 109 # 20054 August 18, 2005



PLANTING NOTE
 CONCEPTUAL PLANTING PLAN
 INDICATES PLANTING SPACES TO BE SPORN IRRIGATION
 ON SHEETS L1, L2, L3, L12

IRRIGATION NOTE
 IRRIGATION IN COMMON IS PUBLIC
 SPACES TO BE SPORN IRRIGATION

POCKET ROAD

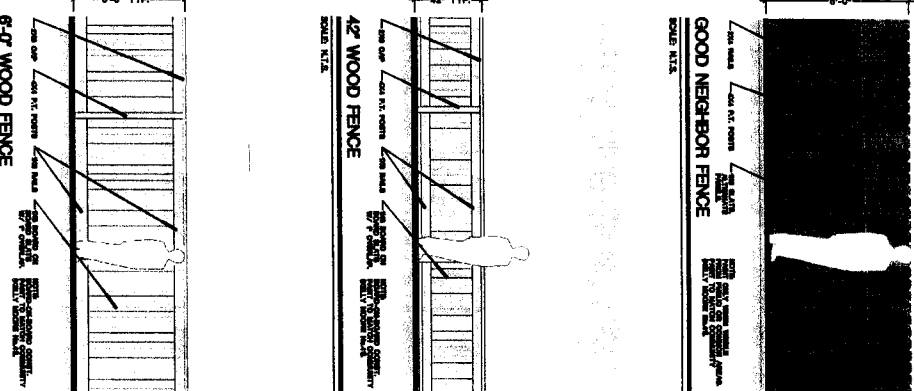
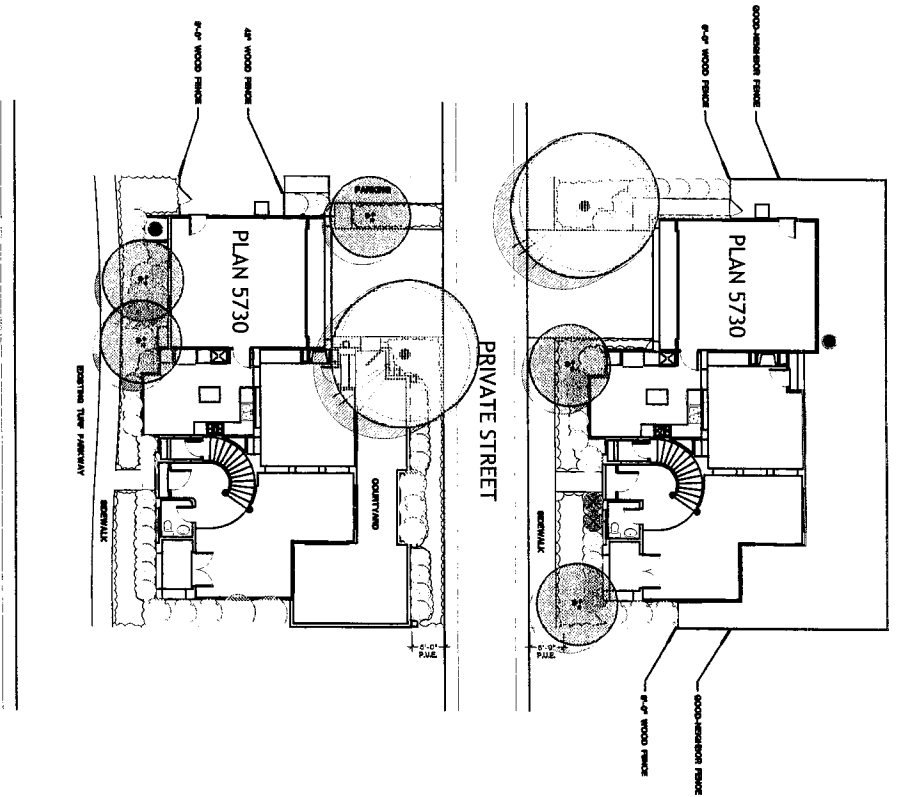
Conceptual Design

PREPARED FOR REGIS HOMES - JANUARY 2005

CANDIDATE PLANT LIST

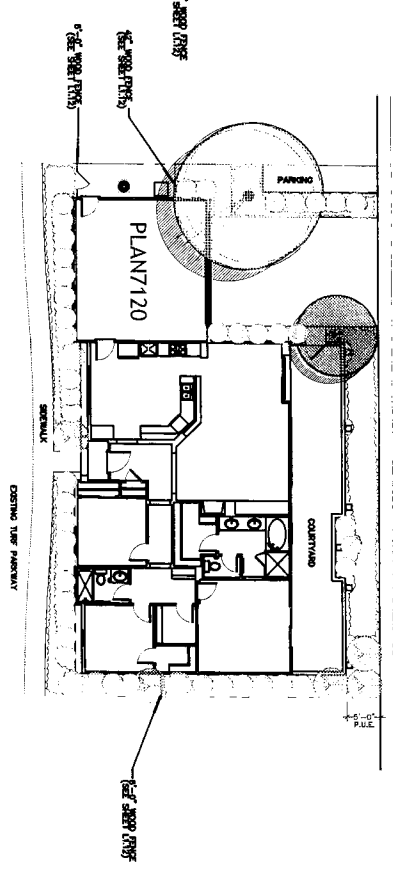
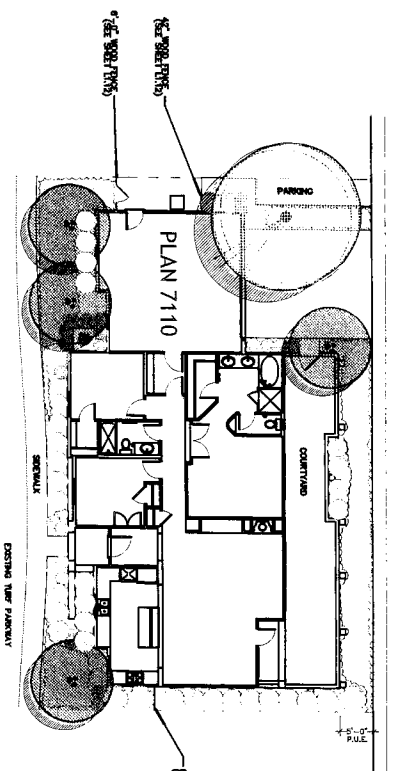
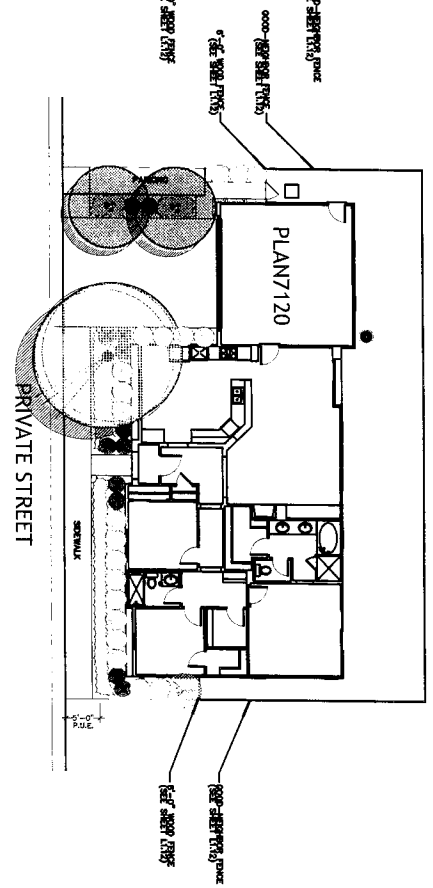
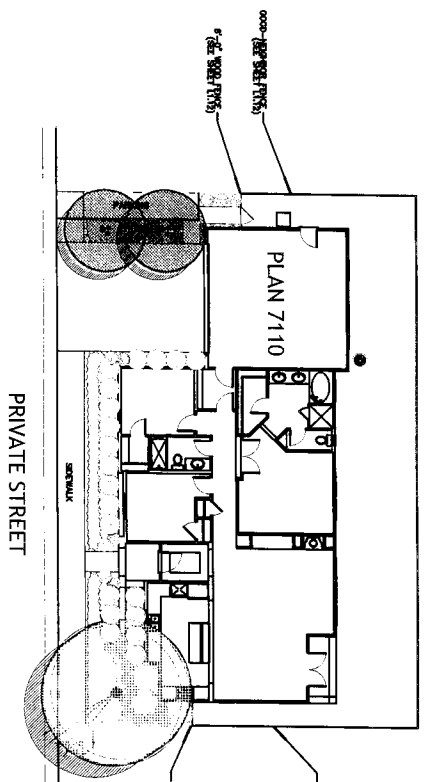
BOTANICAL NAME	COMMON NAME
EVERGREEN TREES	CONSTANT GREEN
LARGE SHADE TREES	SMOOTH BARK
MEDIUM SHADE TREES	SMOOTH BARK
SMALL ACCENT TREES	SMOOTH BARK
SHRUBS	SMOOTH BARK
WINE TREES	SMOOTH BARK
VINES	SMOOTH BARK
TWIG	SMOOTH BARK

IRRIGATION NOTE
IRRIGATION AT INDIVIDUAL HOMES
TO BE DRIP IRRIGATION.



Conceptual Design
PREPARED FOR REGIS HOMES - JANUARY 2005

SCALE: 1"=8'-0"



POCKET ROAD

POCKET ROAD

IRRIGATION NOTE
INDICATION AT INDIVIDUAL HOMES
TO BE DRIP IRRIGATION.

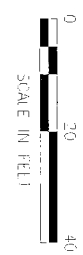
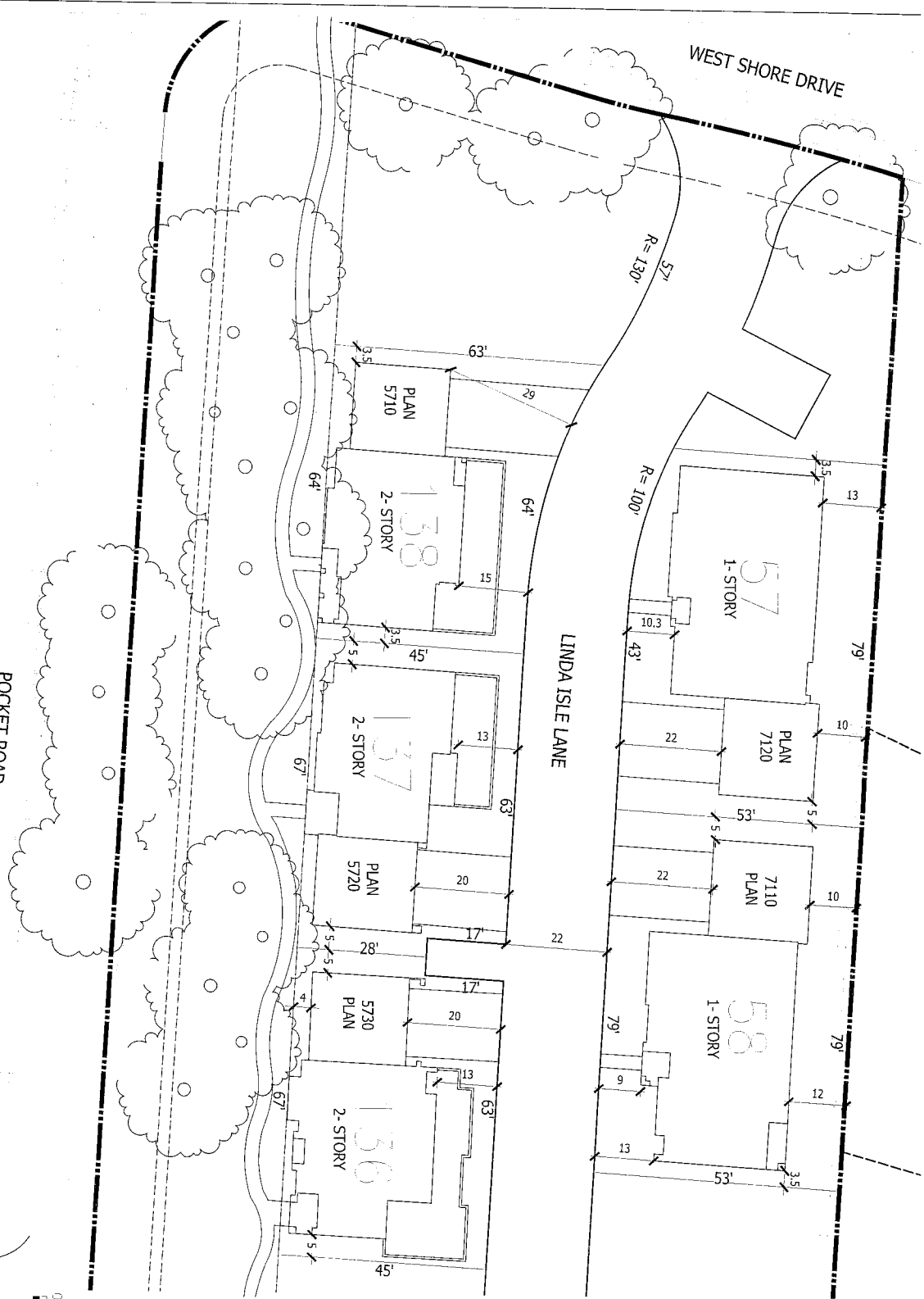
Conceptual Design

PREPARED FOR REGIS HOMES - JANUARY 2005

REGIS HOMES
THE ISLANDS AT RIVERLAKE

TYPICAL SITE PLAN

POCKET ROAD



PHA architects

PHA JOB # 20054 - August 18, 2005