

17



CITY OF SACRAMENTO

August 19th, 1980

REAL ESTATE AND STREET ASSESSMENTS DIVISION
915 I STREET
CITY HALL ROOM 207

SACRAMENTO, CALIFORNIA 95814
TELEPHONE (916) 449-5626

CITY MANAGER'S OFFICE
RECEIVED
AUG 13 1980

IRVIN E. MORAES
REAL ESTATE SUPERVISOR

City Council
Sacramento, California

Honorable Members In Session:

SUBJECT: Abandonment of Light and Air (Setback) Easements
in Park Place South

BACKGROUND INFORMATION

A request has been received from the owners of Park Place South to abandon the 25 foot setback line in certain lots within the subdivision. The owners have in return dedicated to the City a 20 foot easement for light and air (setback). This request has been approved by the Planning Department.

FINANCIAL DATA

There is no cost to the City as all costs will be borne by the owner.

RECOMMENDATION

It is recommended that the attached Resolution of Intention be adopted which sets a Hearing for September 10th, 1980.

Respectfully submitted,

R. H. Parker
City Engineer

Recommendation Approved

Walter J. Slipe
City Manager

RHP:CGP:bd
Attachments
File # 5115

APPROVED
BY THE CITY COUNCIL

HR9 9-10-80

AUG 19 1980

OFFICE OF THE
CITY CLERK

August 19th, 1980
DISTRICT NO. 8

RESOLUTION OF INTENTION NO. 5115

ADOPTED BY THE SACRAMENTO CITY COUNCIL ON DATE OF
AUGUST 19TH, 1980

VACATING PUBLIC EASEMENT PURSUANT TO SECTIONS
50430 TO 50445 INCLUSIVE OF THE GOVERNMENT
CODE OF THE STATE OF CALIFORNIA

WHEREAS, the City Council of the City of Sacramento has received a petition requesting the vacation of easements for light and air in the subdivision known as Park Place South, said vacation to change the setback line in various lots of said Park Place South.

NOW, THEREFORE, BE IT RESOLVED BY THE COUNCIL OF THE CITY OF SACRAMENTO:

That said Council hereby declares its intention to vacate and abandon the public easement, 25 feet in width, for light and air in the following described lots:

Lots 2A, 2B, 5A, 5B, 8A, 8B, 11A, 11B, 12A, 12B, 14A, 14B, 15A, 15B, 17A, 17B, 20A, 20B, 26A, 26B, 30A, 30B, 34A, 34B, 37A, 37B, 38A, 38B, 39A, 39B, 41A, 41B, 43A, 43B, 45A, 45B, 48A, 48B, 49A, 49B, 56A, 56B, 57A and 57B, all as shown on the official plat of Park Place South, filed in the office of the Recorder of Sacramento County in Book 130 of Maps, Map No. 7.

BE IT FURTHER RESOLVED AND ORDERED that the 10th day of September, 1980, at the hour of 7:30 o'clock P. M., in the Council Chambers of the City Council of the City of Sacramento in the City Hall on I Street between 9th and 10th Streets in said City, be, and the same is hereby fixed as the time and place for the hearing of the proposed vacation of said rights of way and easements above described.

BE IT FURTHER RESOLVED that the City Clerk be directed to publish Notice of Hearing of the proposed vacation of said public easements in the Daily Recorder, a newspaper published 5 times a week, as required by law, and that said Notice be posted along said easements to be vacated, in accordance with the provisions of Sections 50440 and 50441, of the Government Code of the State of California.

PASSED AND ADOPTED BY THE CITY COUNCIL OF THE CITY OF SACRAMENTO THIS 19TH DAY OF AUGUST, 1980.

APPROVED
BY THE CITY COUNCIL

MAYOR

ATTEST:

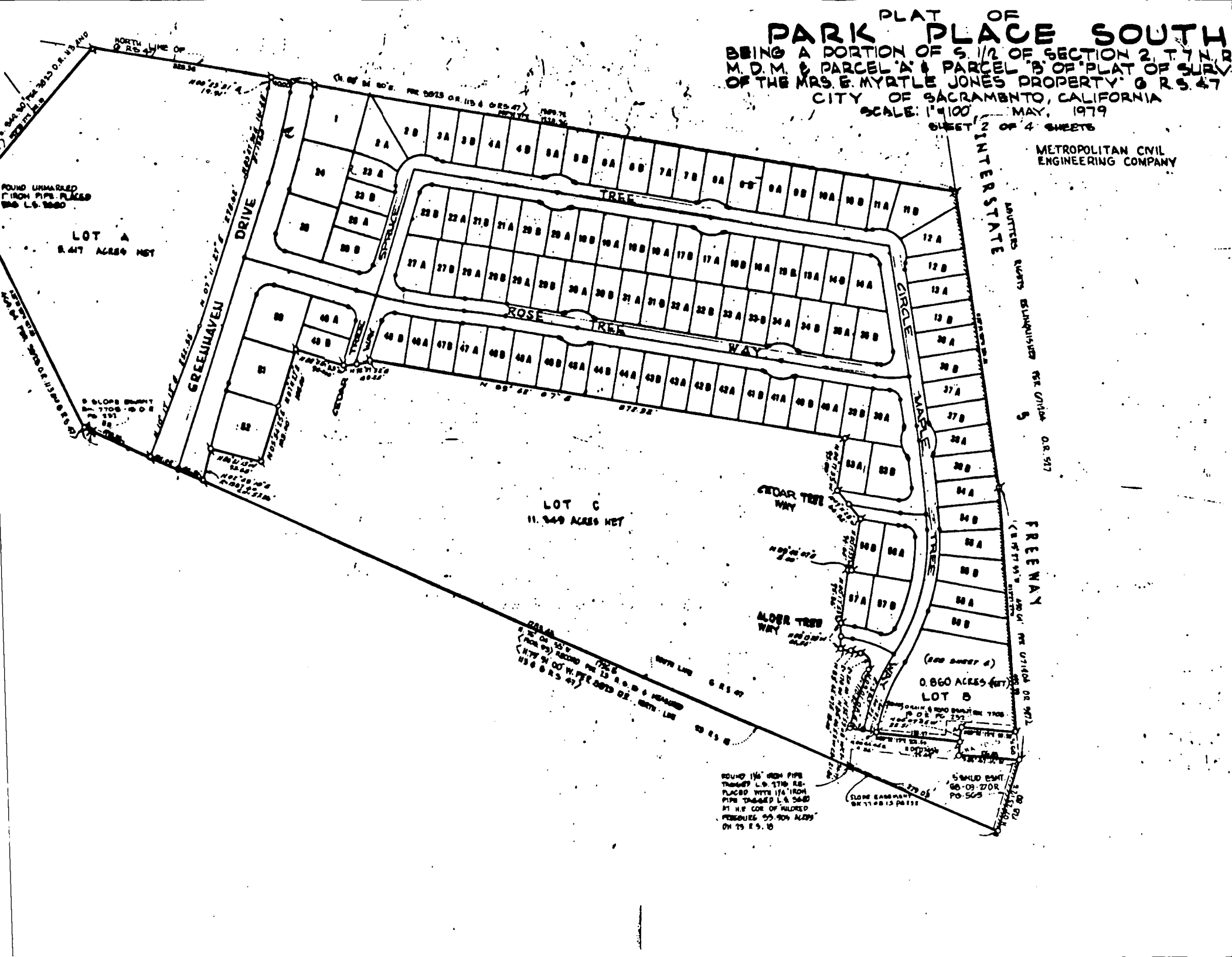
AUG 19 1980

OFFICE OF THE
CITY CLERK

**PARK PLACE OF
PARK PLACE SOUTH**
BEING A PORTION OF S 1/2 OF SECTION 2, T. 4 N., R. 12 W., M. D. M. & PARCEL 'A' & PARCEL 'B' OF PLAT OF SURVEY OF THE MRS. E. MYRTLE JONES PROPERTY, G. R. S. 47
CITY OF SACRAMENTO, CALIFORNIA
SCALE: 1"=100' MAY, 1979

SHEET OF 4 SHEETS

METROPOLITAN CIVIL
ENGINEERING COMPANY



FOUND UNMARKED
IRON PIPE PLACES
L.S. 5880

LOT A
8.417 ACRES NET

LOT C
11.949 ACRES NET

(SEE SHEET 4)
LOT B
0.860 ACRES NET

ROUND 1 1/2" IRON PIPE
THAGED L.S. 1718 AS
PLACED WITH 1 1/4" IRON
PIPE THAGED L.S. 5880
AT N.E. COR. OF RALPHED
PARKWAY 55-904 ACRES
ON 15 R.S. 10

5" GALV. EMBT
66-09-270R
PO-565

5" GALV. EMBT
66-09-270R
PO-565

FOUND UNMARKED
IRON PIPE PLACES
L.S. 5880

5" GALV. EMBT
66-09-270R
PO-565

5" GALV. EMBT
66-09-270R
PO-565

5" GALV. EMBT
66-09-270R
PO-565

5" GALV. EMBT
66-09-270R
PO-565