

1.3

DEPARTMENT OF  
PARKS AND RECREATION

**CITY OF SACRAMENTO**  
CALIFORNIA

1231 I STREET, #400  
SACRAMENTO, CA  
95814-2997

DEPARTMENT ADMINISTRATION

(916) 264-5200  
FAX 264-7643

July 24, 2001

City Council  
Sacramento, California

Honorable Members in Session:

**SUBJECT: A REQUEST FOR THE CITY COUNCIL TO ESTABLISH A PARK DEVELOPMENT CAPITAL IMPROVEMENT PROGRAM (CIP) PROJECT FOR NORTH NATOMAS PARK 3A, WITTER RANCH PARK (CIP PN: LU91)**

**LOCATION AND COUNCIL DISTRICT:**

Park 3A, Witter Ranch Park, is located on Saintsbury Way at Far Niente Way adjacent to the future Witter Ranch Elementary School.

**RECOMMENDATION:**

This report recommends that the City Council adopt the attached resolution to:

- Establish a Capital Improvement Project for North Natomas Park 3A (CIP PN: LU91); and
- Authorize associated appropriation for the development of this park.

**CONTACT PERSON:** Christie Benavides, Administrative Analyst II, 264-1955

**FOR COUNCIL MEETING OF:** July 24, 2001

**SUMMARY:**

This report requests authorization to establish a CIP project account for this park. The first phase of development for Park 3A will include basic site improvements such as grading, landscaping, irrigation and walkways. Staff will return to Council at the appropriate time for further action to develop this park. The proposed improvements will include a children's playground, softball and soccer fields, a group picnic area, and a restroom.

**COMMITTEE/COMMISSION ACTION:**

The first master plan meeting was held with the neighborhood and Natomas Parks and Recreation Advisory Committee (NPRAC) on May 24, 2001 to determine the proposed park amenities. No final committee action was taken at that time. Park master plans will be

presented to both NPRAC and the Citizen's Advisory Committee for approval.

**BACKGROUND:**

In accordance with the North Natomas Community Plan, park construction begins when 50 percent of the homes in the park service are occupied. Therefore, at 50 percent "build out" the City took responsibility for the construction of Park 3A, Witter Ranch Park. This park should be completed by December 2002.

**FINANCIAL CONSIDERATIONS:**

The first phase of Park 3A, Witter Ranch Park, will be funded through collected Park Impact Fees from the associated park service area residential development. When these park development projects are complete, there will be ongoing costs to the City of Sacramento for staffing, maintenance, equipment, fleet rental, chemicals, and supplies.

**ENVIRONMENTAL CONSIDERATIONS:**

The size and location of this park is in compliance with the tentative map for the area and falls within the scope of the Negative Declaration for the Gateway West Subdivision. This project will be submitted for Environmental Review as part of the design and construction document phase.


**POLICY CONSIDERATIONS:**

None.

**ESBD CONSIDERATIONS:**

The selection of Landscape Architect consultants and contractors for these projects will follow City established guidelines for inclusion of ESBD firms.

Approved:

  
Donald W. Murphy, Director

RECOMMENDATION APPROVED:



ROBERT P. THOMAS  
City Manager

**APPROVED**

JUL 24 2001

OFFICE OF THE  
CITY CLERK

**RESOLUTION NO. 2001-507**

ADOPTED BY THE SACRAMENTO CITY COUNCIL

ON DATE OF: \_\_\_\_\_

**RESOLUTION TO ESTABLISH A PARK DEVELOPMENT CAPITAL IMPROVEMENT PROGRAM (CIP PN: LU91) PROJECT FOR NORTH NATOMAS PARK 3A, WITTER RANCH PARK.**

**BE IT RESOLVED THAT THE COUNCIL OF THE CITY OF SACRAMENTO:**

**The City Council hereby:**

1. Approves the establishment of a Capital Improvement Project for North Natomas Park 3A (CIP PN: LU91); and
2. Authorizes the associated appropriation for the development of this park.

FY	FUND	AGENCY	ORG	OBJECT	CURRENT BUDGET	INCREASE (DECREASE)	REVISED BUDGET	BUDGET REF.
01	791	450	4727	3694	\$1,620,000	(\$858,467)	\$761,533	A
01	101	500	LU86	4820	\$0	\$858,467	\$858,467	B

\_\_\_\_\_  
MAYOR

ATTEST:

\_\_\_\_\_  
CITY CLERK

**CITY CLERK USE ONLY**

RESOLUTION NO: \_\_\_\_\_

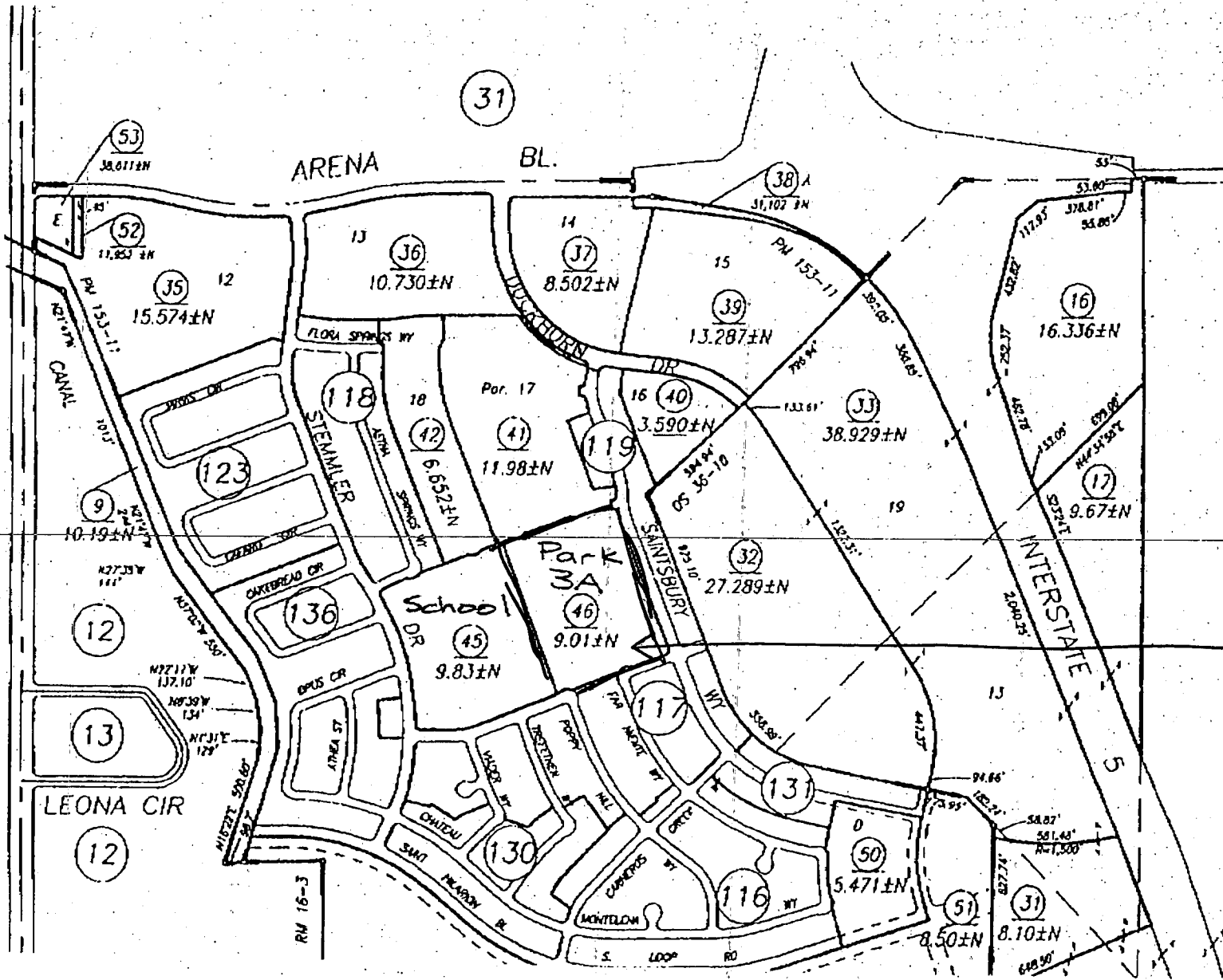
ADOPTED: \_\_\_\_\_

EL CENTRO RD

ARENA BL.

Park 3A Site Map

Exhibit A



F