

RESOLUTION NO. 86-617

ADOPTED BY THE SACRAMENTO CITY COUNCIL ON DATE OF

'AUG 1 4 1986

RESOLUTION APPROVING PETITION
FOR IMPROVEMENT PROCEEDING NO. 5506
MAIN AVENUE SANITARY SEWER
ASSESSMENT DISTRICT NO. 2

WHEREAS, a petition has been filed with the City Council requesting that proceedings be adopted for the improvement of MAIN AVENUE SANITARY SEWER ASSESSMENT DISTRICT NO. 2 in the City of Sacramento; and

WHEREAS, the signers of said petition state that they are all of the Owners of more than 60% of the area liable for Assessment for said work and improvement, and they expressly "WAIVE" the provisions of Division 4 of the "Streets and Highways Code of the State of California" (the Special Assessment Investigation, Limitation and Majority Protest Act of 1931), as amended, and all investigations, proceedings and reports provided for therein; and

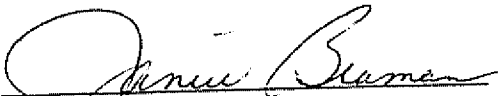
WHEREAS, the said petition has been checked by the City Engineer's Office and found that the WAIVER is signed by the Owners of more than 60% of the area liable for Assessment for said work.

NOW, THEREFORE, BE IT RESOLVED by the Council that the said petition is hereby approved and granted; and

BE IT FURTHER RESOLVED that the City Council hereby finds and determines that the WAIVER in said petition is signed by the Owners of more than 60% of the area liable for said work and improvement and hereby directs that proceedings for said work be authorized, as provided in Division 7 of the said Streets and Highways Code, THE IMPROVEMENT ACT OF 1911.

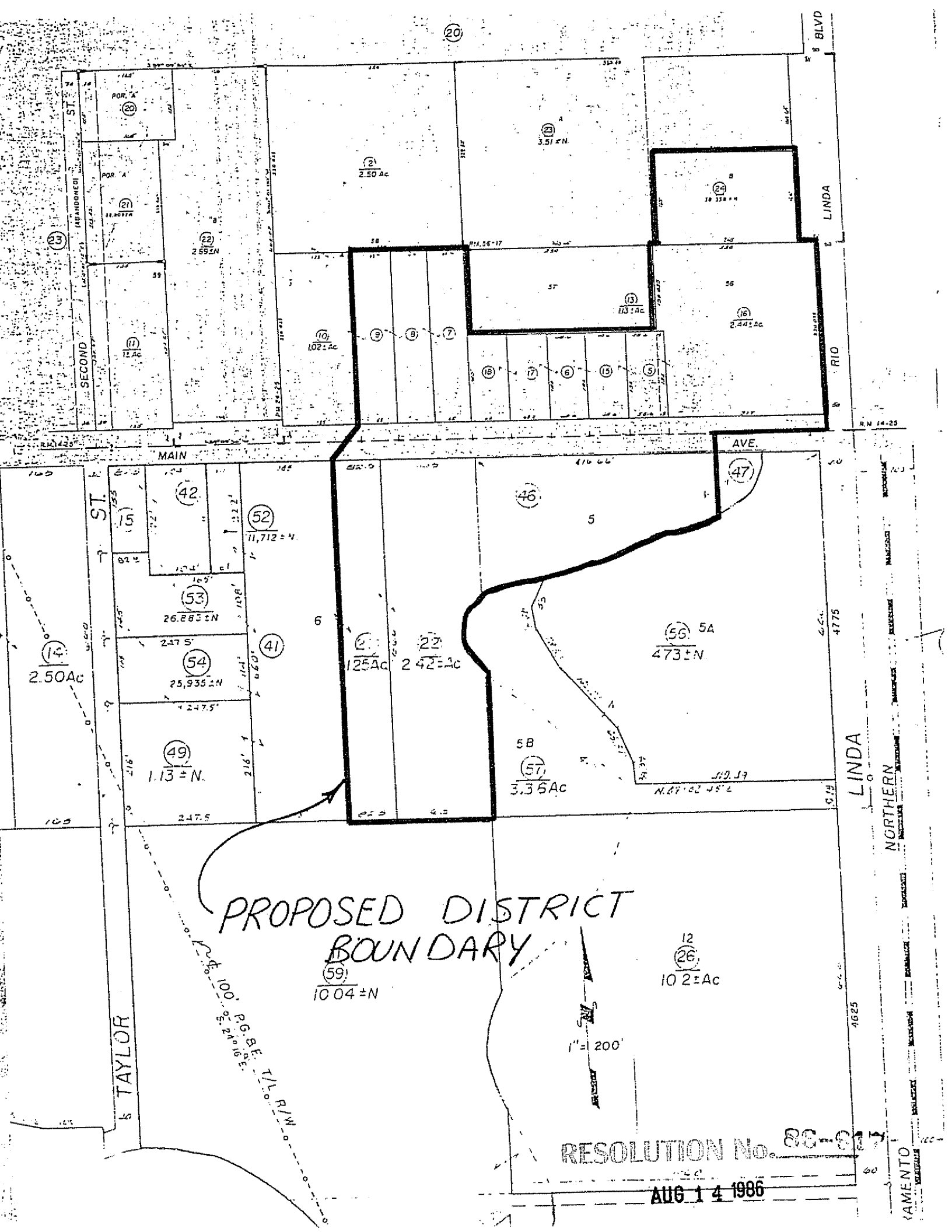

MAYOR

ATTEST:


Deputy CITY CLERK

RESOLUTION No. 86-617

'AUG 1 4 1986



(20)

BLVD

LINDA

RIO

LINDA

NORTHERN

AMENTO

ST
SECOND

MAIN

AVE.

TAYLOR

PROPOSED DISTRICT BOUNDARY

1" = 200'

RESOLUTION No. 28-0

AUG 14 1986

(8) 2.50 Ac

(21) 2.50 Ac

(22) 2.59 ± N

(11) 2.50 Ac

(2) 2.50 Ac

(12) 3.51 ± N

(24) 2.50 Ac

(13) 1.13 ± Ac

(16) 2.44 ± Ac

(10) 1.02 ± Ac

(9)

(8)

(7)

(18)

(17)

(6)

(15)

(5)

(42)

(52) 11,712 ± N

(53) 26,883 ± N

(54) 25,935 ± N

(49) 1.13 ± N

(14) 2.50 Ac

(46)

(47)

(21) 1.25 Ac

(22) 2.42 ± Ac

(56) 5A 473 ± N

(57) 3.35 Ac

(59) 10.04 ± N

(12) 10.2 ± Ac

100' PG&E I/L/R/W

4775

4625

60