

**RESOLUTION NO. 199-535**

ADOPTED BY THE SACRAMENTO CITY COUNCIL

ON DATE OF 9-28-99

**APPROVING FINAL MAP ENTITLED "PARKWAY PLAZA UNIT 3"  
AND SUBDIVISION IMPROVEMENT AGREEMENT (P97-013)**

**WHEREAS, THE CITY COUNCIL OF THE CITY OF SACRAMENTO FINDS AND DETERMINES AS FOLLOWS:**

- A. The Final Map for Parkway Plaza Unit 3, located north of Del Paso Road, west of Natomas Boulevard with provisions for its design and improvement, is consistent with the North Natomas Community Plan. See Exhibit "A" for project location.
- B. The Final Map is in substantial compliance with the previously approved tentative map.

**NOW, THEREFORE, BE IT RESOLVED BY THE COUNCIL OF THE CITY OF SACRAMENTO AS FOLLOWS:**

- 1. The Final Map for this project is hereby approved subject to the execution by all parties of the Subdivision Improvement Agreement for that subdivision.
- 2. All offers of dedication shown on said map are hereby accepted subject to the improvement thereof required by the Subdivision Improvement Agreement.
- 3. The City Manager and City Clerk are authorized and directed to execute on behalf of the City of Sacramento that certain Subdivision Improvement Agreement between the City and Lennar Renaissance, Inc., a California Corporation to provide for the subdivision improvements required by the Subdivision Map Act and Title 40 (Subdivision Regulations) of the Sacramento City Code.

---

FOR CITY CLERK USE ONLY

RESOLUTION NO.: 199-535  
DATE ADOPTED: SEP 28 1999

4. The City Clerk is authorized and directed to record the above-mentioned agreement in the official records of Sacramento County.

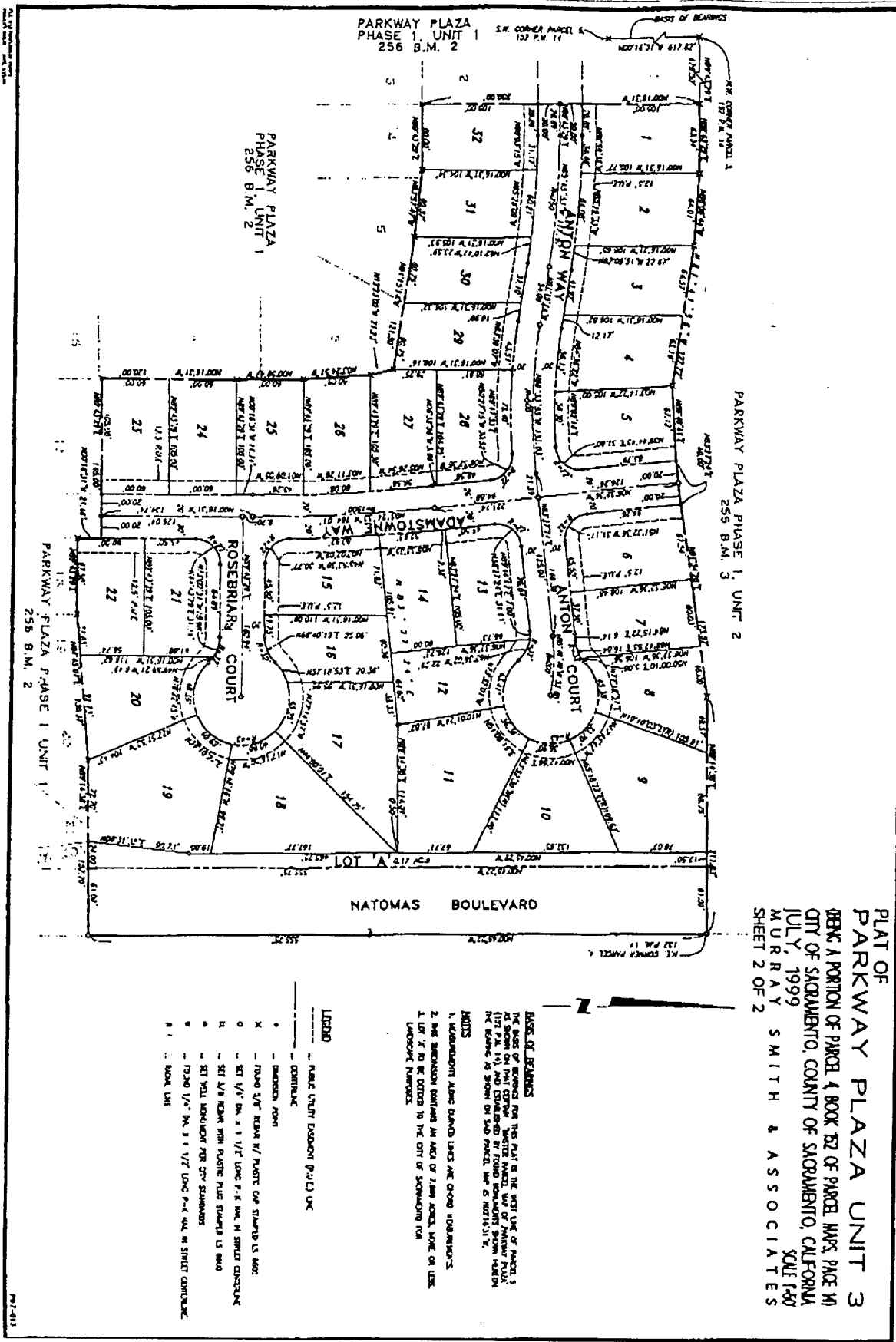
JIMMIE R. YEE  
MAYOR

ATTEST:

**VALERIE BURROWES**

\_\_\_\_\_  
CITY CLERK

S:\techsvs\projdel\devsvs\council\P97-013\unit#3cclet  
9.0399.1



PLAT OF  
**PARKWAY PLAZA UNIT 3**  
 BEING A PORTION OF PARCEL 4 BOOK 82 OF PARCELS MAPS PAGE 14  
 CITY OF SACRAMENTO, COUNTY OF SACRAMENTO, CALIFORNIA  
 JULY, 1999  
 MURRAY SMITH & ASSOCIATES  
 SCALE 1"=40'  
 SHEET 2 OF 2

**BASES OF BEARINGS**  
 THE BASES OF BEARINGS FOR THIS PLAT IN THE WEST LINE OF PARCELS 1 AS SHOWN ON THIS CERTAIN "WRITTEN MAPS" AND OF PARCELS 1, 2, 3, 4, 5, 6, 7, 8, 9, 10, 11, 12, 13, 14, 15, 16, 17, 18, 19, 20, 21, 22, 23, 24, 25, 26, 27, 28, 29, 30, 31, 32 AS SHOWN ON THIS MAP ARE SHOWN BY SAID PARCELS MAPS AS INDICATED.

**NOTES**  
 1. REVISIONS TO THIS PLAT ARE SHOWN BY DASHED LINES.  
 2. THIS SUBDIVISION CONTAINS AN AREA OF 7.889 ACRES, MORE OR LESS.  
 3. LOT "X" IS TO BE OFFERED TO THE CITY OF SACRAMENTO FOR LANDMARK PURPOSES.

- LEGEND**
- PUBLIC UTILITY EASEMENT (P.U.E.) OR
  - CONTRACT
  - EASEMENT POINT
  - X ROAD 5/8" BEARS W/ PLACED OR STAMPED AS ABOVE
  - SET 1/4" DIA. x 1 1/2" LONG P. & H. IN STREET CENTERLINE
  - SET 1/4" BEARS WITH QUARTER PLATE STAMPS AS ABOVE
  - SET YIELD MONUMENT FOR CITY ENGINEERS
  - 17.500 1/4" DIA. x 1 1/2" LONG P. & H. IN STREET CENTERLINE
  - 1" DIA. LINE

FOR CITY CLERK USE ONLY

99-535

RESOLUTION NO: \_\_\_\_\_

DATE ADOPTED: \_\_\_\_\_

SEP 28 1999