

Figure 1. Shows a birds eye view of the Harris Winkle Building especially the store located at 125 and 129 K street, Hemp in the Heartland.

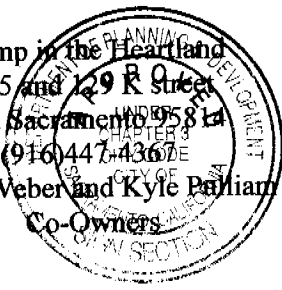
Figures 2 and 3. Show the sign is suspended 8 feet above the boardwalk by two brackets, one on each side. Brackets are 1/4 inch thick steal, approximately 5 feet long and 2 inches wide. They are secured by 4, 1/2 inch thick bolts, two on the sign and two at the top connected to a balcony beam.

Figure 4. Shows the store front is approximately 32 feet wide, including 12 feet of Round Tables entrance, between our two entrances. The sign pending approval is located 2 feet to the left of our second entrance at 129 K street, approximately 8 feet inside our store front. Figure 4 also shows all other existing signs within our frontage.

125 K St  
0510350

Hemp in the Heartland  
125 and 129 K Street  
Old Sacramento 95814  
(916) 447-4367

Marie Weber and Kyle Pollian  
Co-Owners



This set of plans and specifications must be kept on the job at all times and it is unlawful to make any changes or alterations from the same without written permission from the City of Sacramento Sign Section. The approval of this plan and specification SHALL NOT be held to permit or approve the violation of any City Ordinance or State Law.

All electrical work must be U.L. labeled or be of equivalent

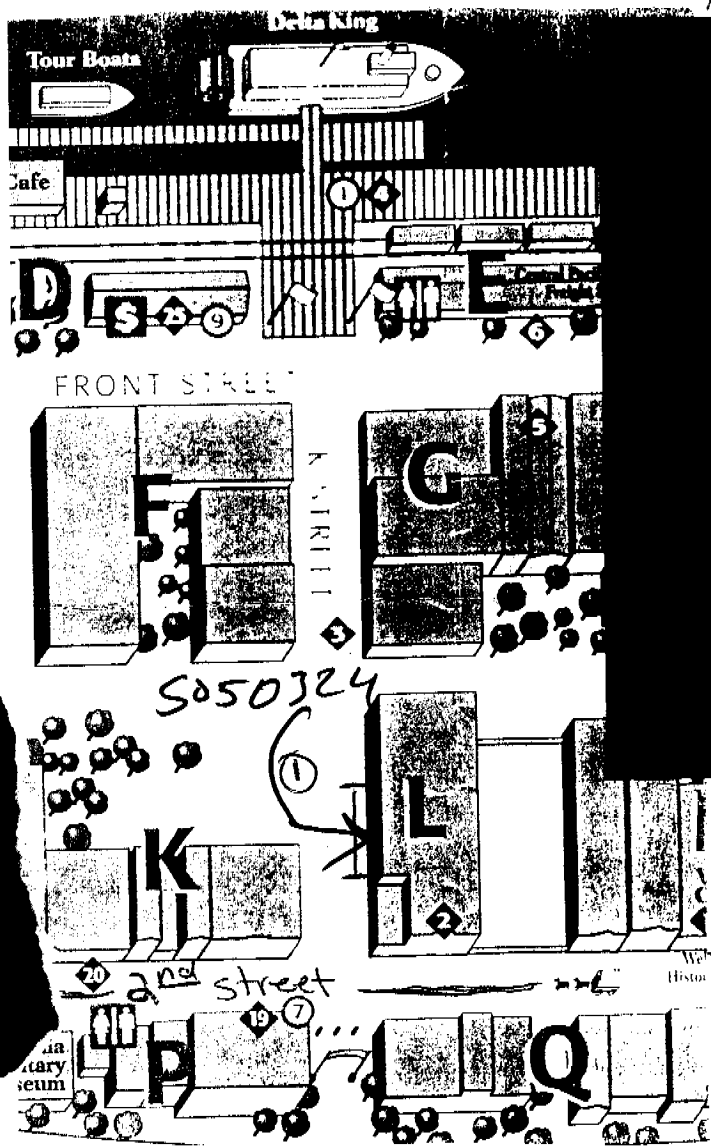
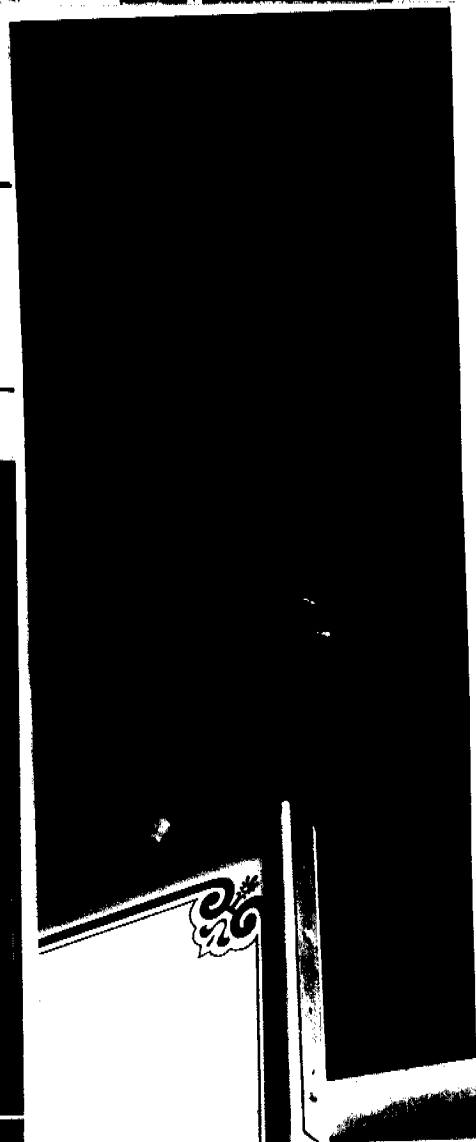


Figure 2

Figure 3

Figure 1

Figure 4



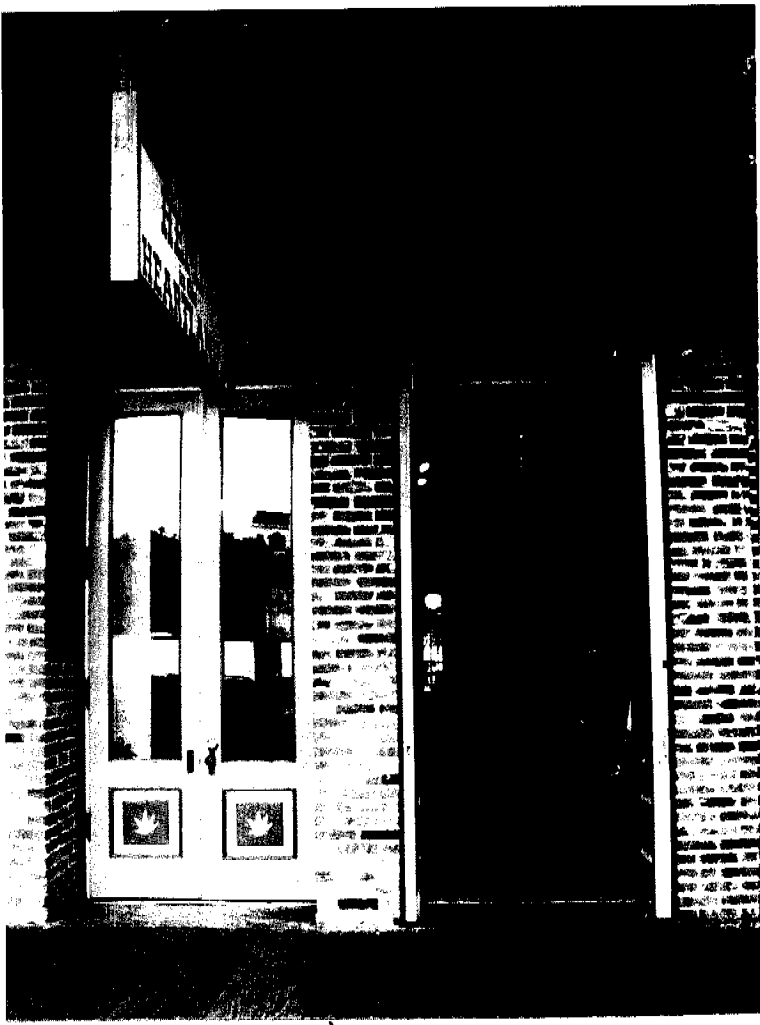


Figure 5

**Figure 5.** The location of the sign pending approval is two feet to the left of our second entrance at 129 K street, approximately 8 feet inside our store front.

**Figure 6.** Dimensions of the sign are 24 inches by 72 inches, with an arch in the middle extending 10 more inches at it's highest point. The lettering is in western font, "Thunder Bay" in green paint with a green boarder and a tan background.

**Figure 7.** Dimensions of the store front are approximately, 32 feet wide this includes 12 feet of Round Tables entrance, between our two entrances.

**SIGN PERMIT PROCEDURE  
OLD SACRAMENTO SIGN DISTRICT**

REQUIRED

HISTORIC REVIEW      APPROVED AS NOTED BY J. S. H.

REQUIRES      DATE 6/21/2005

SIGN PERMIT(S) FOR 1 SIGN(S)

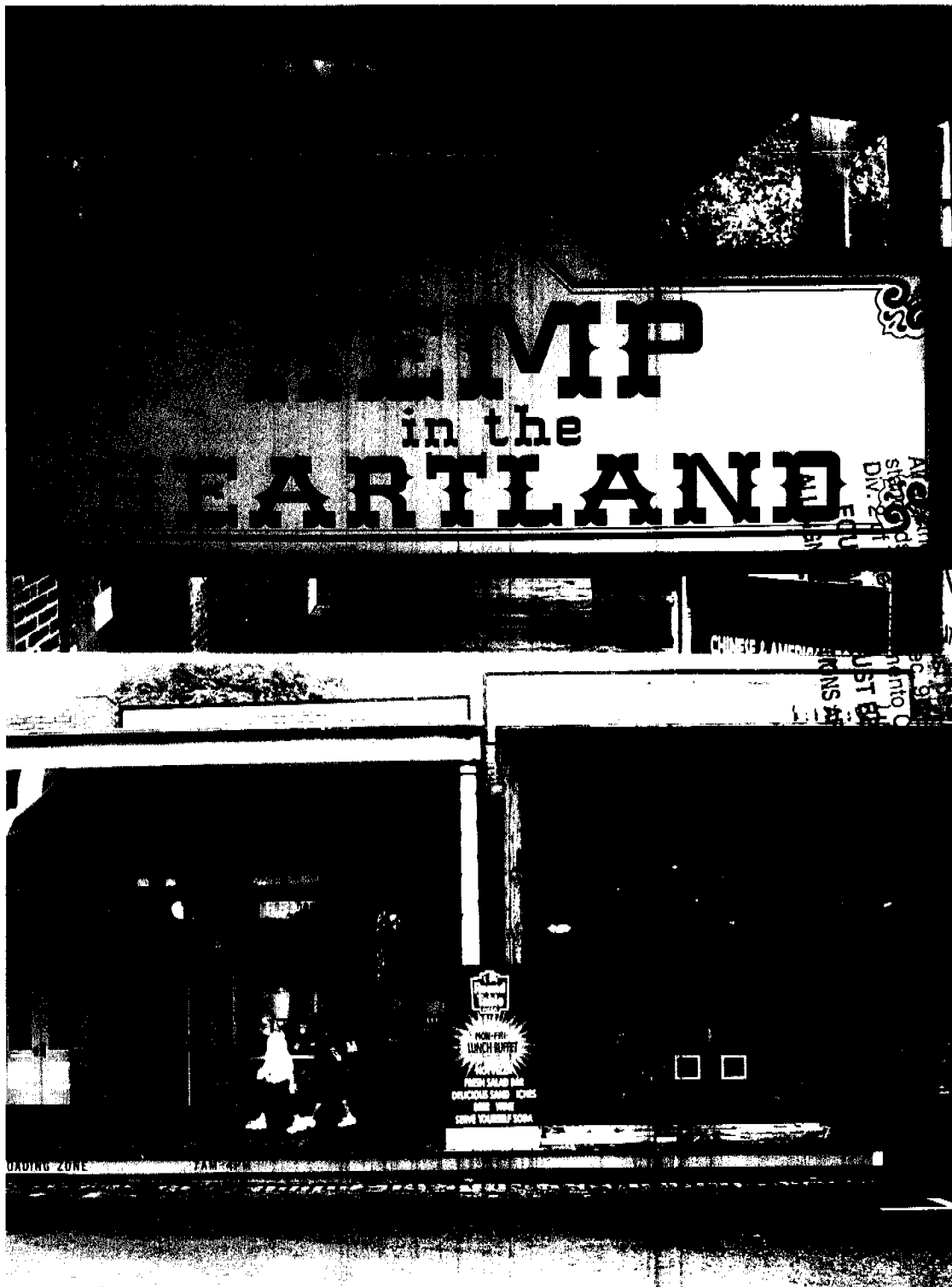
ENCROACHMENT PERMIT

ENCROACHMENT PERMIT      APPROVED AS NOTED BY \_\_\_\_\_

# \_\_\_\_\_      DATE \_\_\_\_\_

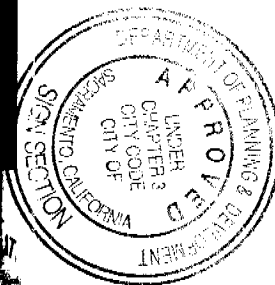
SIGN PERMIT      APPROVED AS NOTED BY \_\_\_\_\_

# \_\_\_\_\_      DATE \_\_\_\_\_



*1 sign is already permitted and this application is for a 2nd sign.*

Figure 6



This set of plans and specifications must be kept on the job at all times and it is unlawful to make any changes or alterations from the same without written permission from the City of Sacramento Sign Section. The approval of this plan and specifications SHALL NOT be held to permit or constitute a violation of any City Ordinance or State Law.