



DEPARTMENT OF
TRANSPORTATION

PARKING SERVICES DIVISION
www.cityofsacramento.org

CITY OF SACRAMENTO
CALIFORNIA

May 27, 2005

1023 J STREET
SUITE 202
SACRAMENTO, CA
95814-2877

PH 916-808-5354
FAX 916-808-7501

City Council
Sacramento, California

Honorable Members in Session:

**SUBJECT: 50TH STREET ANNEXATION TO THE SUTTER MEMORIAL HOSPITAL
RESIDENTIAL PERMIT PARKING AREA**

LOCATION AND COUNCIL DISTRICT:

- 50th Street, both sides, between H and J Streets (Attachment A). Council District 3.

RECOMMENDATION:

This report recommends that the City Council adopt the attached resolution to annex both sides of 50th Street, between H and J Streets into the Sutter Memorial Hospital residential permit parking area.

CONTACT PERSON: Howard Chan, Parking Services Manager 808-7488

FOR COUNCIL MEETING OF: June 21, 2005

SUMMARY:

This report recommends annexing 50th Street between H and J Streets into the Sutter Memorial Hospital residential permit parking area. Regulating parking on this street with a two-hour parking time limit except with permit will relieve the parking congestion generated by area employees and make it easier for residents to park near their homes. It is estimated that it will cost \$1,000 to install the required regulatory signs. Funds are available in the Parking Services Division operating budget.

COMMITTEE/COMMISSION ACTION:

None.

BACKGROUND INFORMATION:

The Sutter Memorial Hospital residential permit parking area was established in May 1979. Residents on 50th street between H and J Streets submitted a petition with thirty signatures in July 2004 requesting to be annexed into the Sutter Memorial Hospital residential permit parking area to preserve neighborhood parking.

Parking staff followed up with a letter in September 2004 which was sent to residents and businesses that may be impacted by the parking regulation, outlining the request and solicited comments. A majority (76%) of residents responded in favor of the proposed permit parking regulation. The nearby businesses are opposed to the proposal. However, they would consider the proposal if travel lanes on J Street were reduced to one lane in each direction with a center turn lane (from two lanes in each direction) between 42nd and 51st Streets. Traffic Engineering Services will be conducting studies to determine if the J Street travel lanes can be reconfigured as requested by the businesses.

In the meantime, staff recommends proceeding with the annexation of 50th Street between H and J Streets to the Sutter Memorial Hospital residential permit parking area. Parking will be regulated with a two-hour parking time limit. Residents and their guests will be exempt from the parking restrictions when the proper permit is displayed. Business customers will be able to park for up to two hours while patronizing nearby businesses.

FINANCIAL CONSIDERATIONS:

The cost to implement the recommended parking restrictions is estimated to be \$1,000 for the installation of regulatory signs. Funds are available in the Parking Services Division operating budget.

ENVIRONMENTAL CONSIDERATIONS:

The Development Services Department, Environmental Services Division has reviewed the recommendation to annex 50th Street, both sides, between H and J Streets into the Sutter Memorial Hospital residential permit parking area, and has determined that the project is exempt from the provisions of the California Environmental Quality Act (CEQA) under Class 1, Section 15301 (c) and Class 11, Section 15311 (a) of the CEQA guidelines. Projects exempted under Class 1, Section 15301 (c), consist of the operation, repair or minor alterations of existing highways, streets, sidewalks, gutters, bicycle and pedestrian trails and similar facilities involving negligible or no expansion of use. Projects exempted under Class 11, Section 15311 (a), consist of the construction or replacement of minor structures accessory to existing commercial, industrial or institutional facilities, including but not limited to on-premise signs.

POLICY CONSIDERATIONS:


This recommendation is consistent with the City's strategic plan and the goal of the City Council to enhance and preserve the neighborhoods.

City Council
50th Street Annexation To The Sutter Memorial Hospital Residential Permit Parking Area
May 27, 2005

ESBD CONSIDERATIONS:

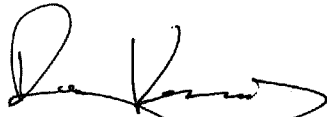
Any goods and services will be purchased in accordance with established City policy.

Respectfully submitted,



Howard Chan
Parking Services Manager


RECOMMENDATION APPROVED:



ROBERT P. THOMAS
City Manager

for

Approved:

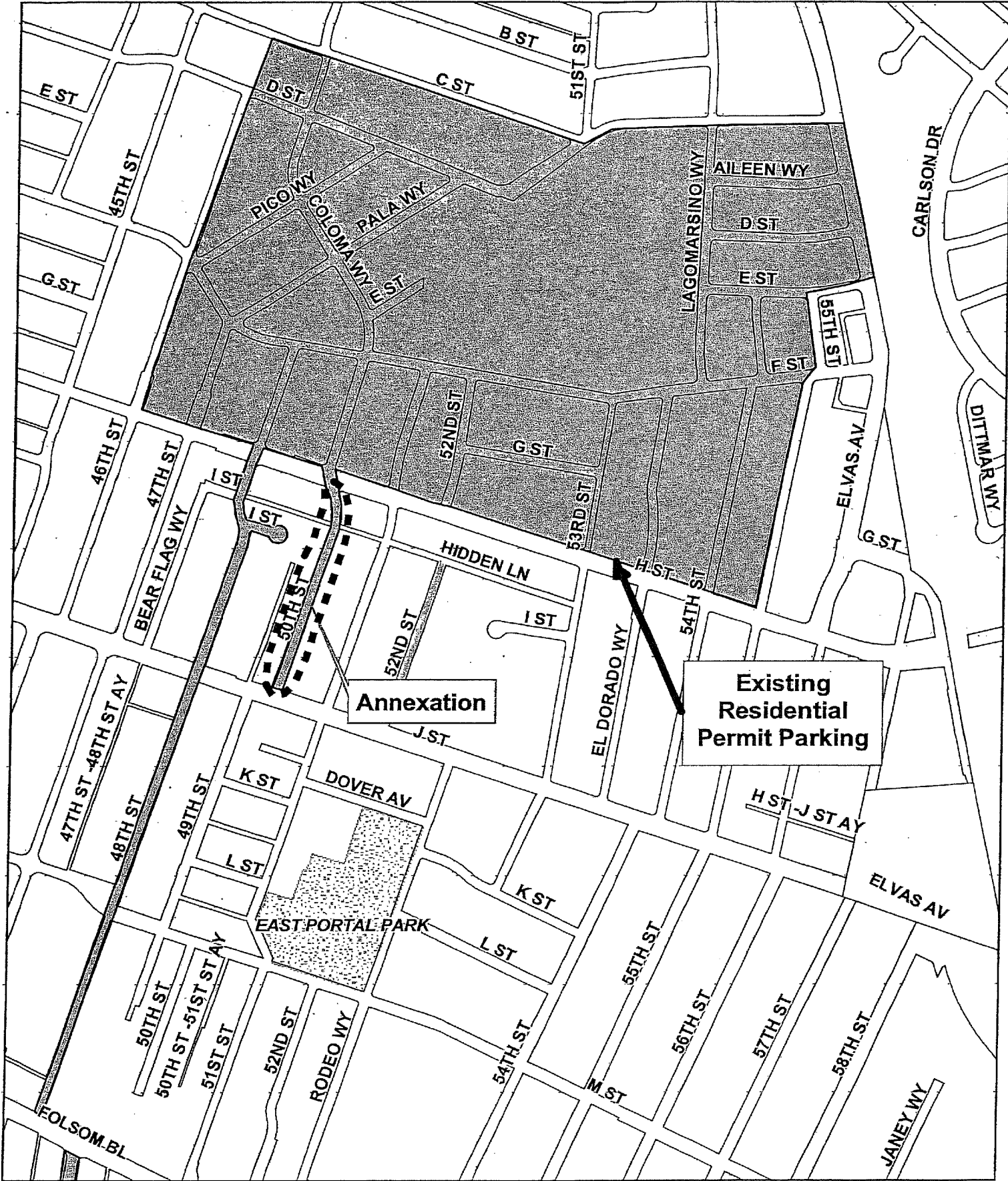


Marty Hanneman
Director, Department of Transportation

Table of Contents

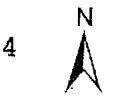
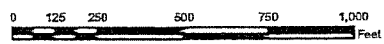
Attachment A (Map)	Page 4
Resolution	Page 5

s:05-01-02-50th St-a-6.7.05



Annexation

Existing Residential Permit Parking



PROPOSED ANNEXATION

RESOLUTION NO.

ADOPTED BY THE SACRAMENTO CITY COUNCIL

ON DATE OF _____

**RESOLUTION ANNEXING 50TH STREET TO THE SUTTER MEMORIAL HOSPITAL
RESIDENTIAL PERMIT PARKING AREA**

WHEREAS, pursuant to Section 10.48.180 of the Sacramento City Code, whenever the City Council finds that residential streets adjacent to a residential permit parking area have all day, on-street parking congestion, then upon recommendation of the Parking Manager such residential streets may be added to said residential permit parking area.

THEREFORE, BE IT HEREBY RESOLVED BY THE COUNCIL OF THE CITY OF SACRAMENTO THAT:

The following streets shall be annexed into the Sutter Memorial Hospital residential permit parking area and regulated with a two-hour parking time limit from 8 am to 6 pm except with "A" permit except Saturdays, Sundays and holidays:

- 50th Street, both sides, between H and J Streets.

MAYOR

ATTEST:

CITY CLERK

FOR CITY CLERK USE ONLY

RESOLUTION NO.: _____

DATE ADOPTED: _____