

RESOLUTION NO. 2008-093

Adopted by the Sacramento City Council

February 19, 2008

APPROVING THE TIMELINE AND SCORING CRITERIA FOR PREPARATION OF 2008 PARKS AND RECREATION PROGRAMMING GUIDE (PRPG)

BACKGROUND

- A. The City of Sacramento's PRPG is designed to identify, evaluate, and prioritize unfunded or under-funded park and recreation capital projects citywide.
- B. PRPG projects are scored and prioritized per the City Council approved PRPG process.
- C. The adopted *2005-2010 Parks and Recreation Master Plan* sets service level goals for both park and recreation acreage and facility needs within the City of Sacramento. The service level goals, population projections from the City's Development Services Department and the City's updated park and recreation facility inventory will be used to develop updated deficiency calculations for the 2008 PRPG.

BASED ON THE FACTS SET FORTH IN THE BACKGROUND, THE CITY COUNCIL RESOLVES AS FOLLOWS:

- Section 1. The timeline and scoring criteria for the preparation 2008 Parks and Recreation Programming Guide, attached as Exhibits A and B, are approved.

Table of Contents:

Exhibit A –2008 PRPG Update Timeline
Exhibits B¹⁻⁷ – 2008 PRPG Scoring Criteria

Adopted by the City of Sacramento City Council on February 19, 2008 by the following vote:

Ayes: Councilmembers Cohn, Fong, Hammond, McCarty, Pannell, Sheedy, Tretheway, Waters, and Mayor Fargo.

Noes: None.

Abstain: None.

Absent: None.



Mayor Heather Fargo

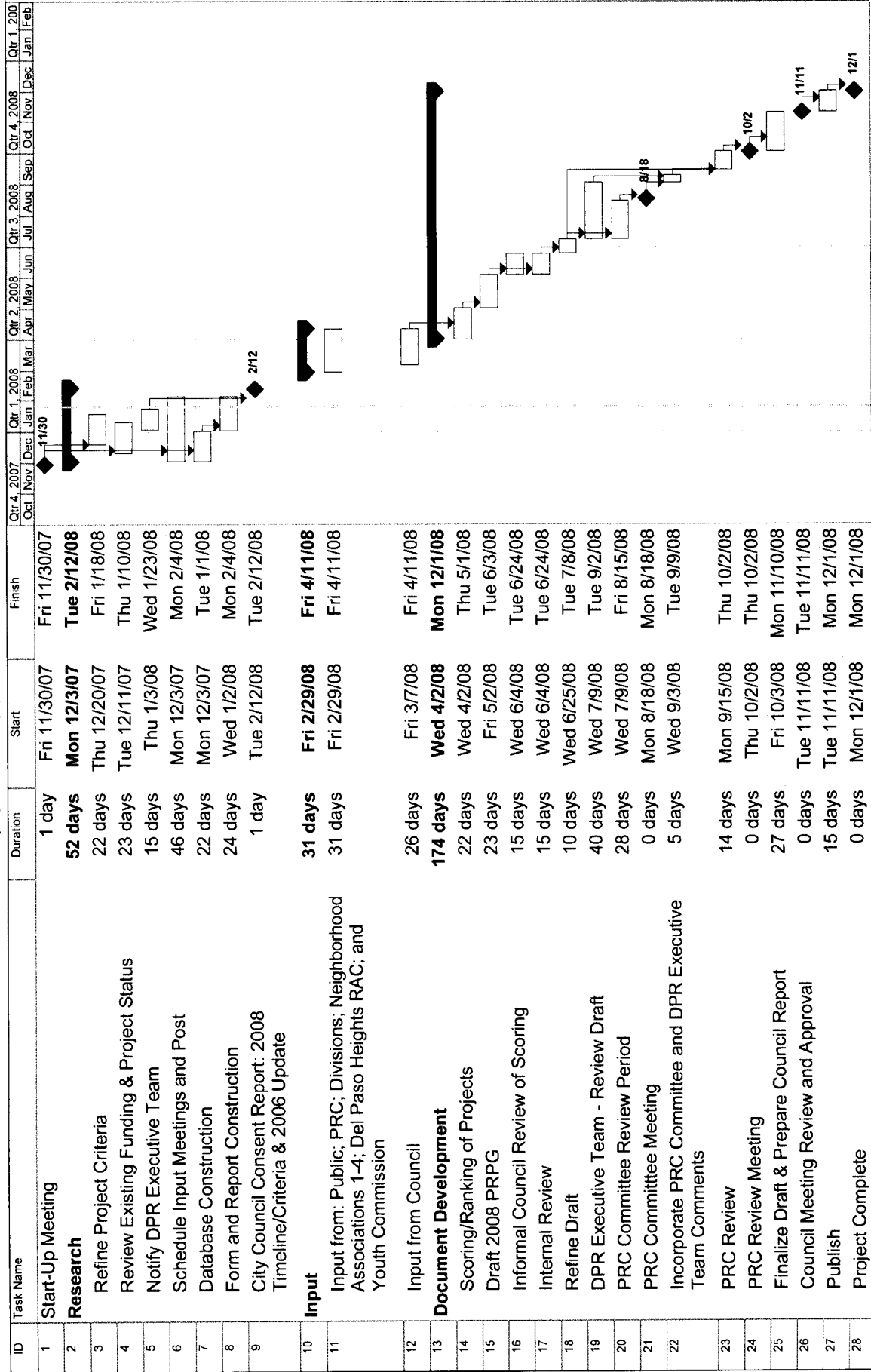
Attest:



Shirley Concolino, City Clerk

City of Sacramento
2008 Parks and Recreation Programming Guide Update Timeline

Gary Hyden, x1949, ghyden@cityofsacramento.org



Project: 2008 Parks and Recreation Programming Guide Update T
 Date: Fri 1/25/08

Legend:
 External Tasks: Diamond
 External Milestone: Thick Arrow
 Deadline: Thin Arrow
 Milestone: Box
 Summary: Dotted Line
 Project Summary: Thick Line
 Task: Thin Line
 Split: Dotted Line
 Progress: Thick Line

2008 PARKS AND RECREATION PROGRAMMING GUIDE

**PROPOSED SCORING CRITERIA
NEIGHBORHOOD/COMMUNITY LAND ACQUISITION**

PROJECT NAME:

Planning Area:

Council District:

PARK ACREAGE NEED:

- 4 points -- High need for parkland
- 2 points -- Need for parkland
- 0 points -- No need for parkland

SITE SIGNIFICANCE:

- 4 points -- Includes cultural and/or natural resource element and is in an at-risk neighborhood
- 2 points -- Includes cultural and/or natural resource element or is in an at-risk neighborhood
- 0 points -- Neither

SUITABILITY FOR ACTIVE/PASSIVE RECREATIONAL USE:

- 3 points -- High suitability
- 2 points -- Moderate suitability
- 1 point -- Low suitability
- 0 points -- Not suitable

LAND AVAILABILITY:

- 2 points -- Available for purchase (unencumbered) and land needs to be purchased immediately or the opportunity will be lost
- 1 point -- Unavailable for purchase

COST OFFSETS AND PARTNERSHIPS:

- 2 points -- Outside funding available (i.e., grants, volunteer support, etc.)
- 0 points -- No outside funding available

TOTAL POINTS OUT OF 15:

2008 PARKS AND RECREATION PROGRAMMING GUIDE

**PROPOSED SCORING CRITERIA
DEVELOPMENT OF NEW OR
EXISTING PARKS OR RECREATIONAL FACILITIES**

PROJECT NAME:

**Planning Area:
Council District:**

PARK ACREAGE NEED:

- 4 points -- High need for parkland
- 2 points -- Need for parkland
- 0 points -- No need for parkland

RECREATIONAL FACILITIES NEED:

- 4 points -- High need
- 2 points -- Moderate need
- 0 points -- No need

PUBLIC PRIORITY AND SITE SIGNIFICANCE:

- 3 points -- Neighborhood and/or business support and a cultural and/or natural resource element
- 2 points -- Completed Community or Park Master Plan
- 1 point -- Neighborhood and/or business support
- 0 points -- No known public support

COST OFFSETS AND PARTNERSHIPS:

- 2 points -- Outside funding available (i.e., grants, volunteer support, etc.)
- 0 points -- No outside funding available

AT-RISK OR ECONOMICALLY DISADVANTAGED AREA:

- 2 points -- Yes
- 0 points -- No

TOTAL POINTS OUT OF 15:

2008 PARKS AND RECREATION PROGRAMMING GUIDE

**PROPOSED SCORING CRITERIA
REPAIR AND REHABILITATION**

PROJECT NAME:

**Planning Area:
Council District:**

HEALTH AND SAFETY:

- 3 points -- Serious health/safety concern
- 2 points -- Health/Safety concern
- 0 points -- No health/safety concern

SITE SIGNIFICANCE:

- 4 points -- Includes a cultural and/or natural resource element and is in an at-risk neighborhood
- 2 points -- Includes a cultural and/or natural resource element or is in an at-risk neighborhood
- 0 points -- Neither

PUBLIC USE:

- 3 points -- High use
- 2 points -- Moderate use
- 1 point -- Low use
- 0 points -- No use

LEGAL MANDATES:

- 2 points -- Legal mandate, i.e. code violation, legislative mandate, etc.
- 0 points -- Not applicable

COST OFFSETS AND PARTNERSHIPS:

- 2 points -- Outside funding available (i.e., grants, volunteer support, etc.)
- 0 points -- No outside funding available

FACILITY NEEDS (BY PLANNING AREA):

- 2 points -- Addresses facility needs
- 0 points -- Does not address facility needs

TOTAL POINTS OUT OF 15:

2008 PARKS AND RECREATION PROGRAMMING GUIDE

**PROPOSED SCORING CRITERIA
COMMUNITY FACILITY**

PROJECT NAME:

Planning Area:
Council District:

FACILITY NEED:

- 4 points -- High need
- 2 points -- Basic need
- 0 points -- No need for this type of facility

COMMUNITY BENEFIT:

- 3 points -- New recreational, cultural, or educational opportunities
- 2 points -- Enhanced recreational, cultural, or educational opportunities
- 1 point -- Limited recreational, cultural, or educational opportunities

PUBLIC PRIORITY:

- 3 points -- Neighborhood and/or business support, projected to be a high use facility, and complete master plan
- 2 points -- Projected to be a high use facility or complete master plan
- 1 point -- Neighborhood and/or business support
- 0 points -- No known public support

COST OFFSETS AND PARTNERSHIPS:

- 3 points -- Outside funding available (i.e., grants, volunteer support, etc.)
- 0 points -- No outside funding available

AT-RISK OR ECONOMICALLY DISADVANTAGED AREA:

- 2 points -- Yes
- 0 points -- No

TOTAL POINTS OUT OF 15:

2008 PARKS AND RECREATION PROGRAMMING GUIDE

**PROPOSED SCORING CRITERIA
REGIONAL LAND ACQUISITION**

PROJECT NAME:

**Planning Area:
Council District:**

PARK ACREAGE NEED:

- 4 points -- High need for parkland
- 2 points -- Need for parkland
- 0 points -- No need for parkland

SITE SIGNIFICANCE:

- 4 points -- Includes historical, cultural, or natural resource element and is easily accessible
- 2 points -- Includes historical, cultural, or natural resource element or is easily accessible
- 0 points -- Neither

SUITABILITY FOR ACTIVE/PASSIVE RECREATIONAL USE:

- 3 points -- High suitability
- 2 points -- Moderate suitability
- 1 point -- Low suitability
- 0 points -- Not suitable

LAND AVAILABILITY:

- 2 points -- Available for purchase (unencumbered) and land needs to be purchased immediately or the opportunity will be lost
- 1 point -- Unavailable for purchase

COST OFFSETS AND PARTNERSHIPS:

- 2 points -- Outside funding available (i.e., grants, volunteer support, etc.)
- 0 points -- No outside funding available

TOTAL POINTS OUT OF 15:

2008 PARKS AND RECREATION PROGRAMMING GUIDE

**PROPOSED SCORING CRITERIA
DEVELOPMENT OF NEW OR EXISTING
REGIONAL PARKS/RECREATIONAL FACILITIES**

PROJECT NAME:

**Planning Area:
Council District:**

REGIONAL NEED:

- 4 points -- High need for regional parkland or facility
- 2 points -- Need for regional parkland or facility
- 1 point -- No need for regional parkland or facility

REGIONAL SIGNIFICANCE:

- 4 points -- Unique to the region and is a destination attraction
- 3 points -- Unique to the region or is a destination attraction
- 2 points -- Reduces need for neighborhood/community parkland or community facility
- 1 point -- No regional significance

ECONOMIC REVITALIZATION:

- 3 points -- Located in an economically disadvantaged area and has an identified economic benefit
- 2 points -- Located in an economically disadvantaged area or has an identified economic benefit
- 0 points -- Not applicable

COST OFFSETS AND PARTNERSHIPS:

- 2 points -- Outside funding available (i.e., grants, volunteer support, etc.)
- 1 points -- No outside funding available

LOCAL NEIGHBORHOOD/BUSINESS SUPPORT:

- 2 points -- Local neighborhood/business support
- 0 points -- No support known

TOTAL POINTS OUT OF 15:

2008 PARKS AND RECREATION PROGRAMMING GUIDE

**PROPOSED SCORING CRITERIA
REGIONAL REPAIR AND REHABILITATION**

PROJECT NAME:

Planning Area: REG.
Council District: REG.

HEALTH AND SAFETY:

- 3 points -- Serious health/safety concern
- 2 points -- Health/Safety concern
- 0 points -- No health/safety concern

SITE SIGNIFICANCE:

- 3 points -- Includes a cultural and/or natural resource element and is a regional destination attraction
- 2 points -- Includes a cultural and/or natural resource element or is in an at-risk neighborhood or is a regional destination attraction
- 0 points -- None

PUBLIC USE:

- 3 points -- High use
- 2 points -- Moderate use
- 1 point -- Low use
- 0 points -- No use

LEGAL MANDATES:

- 2 points -- Legal mandate, i.e. code violation, legislative mandate, etc.
- 0 points -- Not applicable

COST OFFSETS AND PARTNERSHIPS:

- 2 points -- Outside funding available (i.e., grants, volunteer support, etc.)
- 0 points -- No outside funding available

FACILITY NEEDS (BY PLANNING AREA):

- 2 points -- Addresses facility needs
- 0 points -- Does not address facility needs

TOTAL POINTS OUT OF 15: