

DEPARTMENT OF HEALTH AND HUMAN SERVICES  
OFFICE OF COMMUNITY SERVICES  
(PROGRAM ANNOUNCEMENT NO. OCS-98-02)

**Request for Applications Under the Office of Community Services' Fiscal Year 1998 Job Opportunities for Low-Income Individuals Program**

**AGENCY:** Administration for Children and Families (ACF), DHHS

**ACTION:** Announcement of availability of funds and request for applications under the Office of Community Services' FY 1998 Job Opportunities for Low-Income Individuals (JOLI) Program

**SUMMARY:** The Administration for Children and Families (ACF), Office of Community Services (OCS), announces that, based on availability of funds, competing applications will be accepted for new grants pursuant to the Secretary's discretionary authority under section 505 of the Family Support Act of 1988, as amended.

**CLOSING**

**DATE:** To be considered for funding applications must be postmarked on or before May 18, 1998. Detailed application submission instructions including the addresses to which applications must be submitted are found in Part V-B. **Application Submission.**

**FOR FURTHER INFORMATION CONTACT:**

Administration for Children and Families  
Office of Community Services  
370 L'Enfant Promenade S.W.  
Washington, D.C. 20447  
Contact: Nolan Lewis (202) 401-5282  
John Jolley, (202) 401-5284  
Richard Saul (202) 401-9341

**In addition, this Notice is accessible on the OCS WEBSITE for reading or downloading at "<http://www.acf.dhhs.gov/programs/ocs>".**

If this Program Announcement is not available at these sources it may be obtained by telephoning or writing the office listed under "FOR FURTHER INFORMATION CONTACT" above.

The Catalog of Federal Domestic Assistance number for this program is "93.593". The title is "Job Opportunities for Low-Income Individuals (JOLI) Program".

**C. AVAILABILITY OF FUNDS AND GRANT AMOUNTS**

Approximately \$5,500,000 is available in FY 1998 for JOLI. OCS estimates that approximately \$4,000,000 will be available for new grants and up to \$1,000,000 for continuation grants for the FY 1995 JOLI grantees pursuant to this Announcement. The 1996 amendments to the JOLI authorizing legislation also deleted the limitation on number of grants to be made in any one Fiscal Year. Thus the Office of Community Services expects to award approximately 5 to 10 new grants by September 30, 1998, based on the amounts requested and contingent on the availability of funds. Grants of up to \$500,000 in OCS funds for project periods of up to five years and budget periods of up to three years will be awarded to selected organizations under this program in FY 1998.

All FY 1995 JOLI grantees will be provided guidance and instructions regarding the process of applying for continuation awards approximately six months prior to the completion of the current budget period (9/29/98). OCS will conduct a comprehensive review of each application to assure satisfactory progress in meeting the goals and objectives of the approved grant, and that the grantee is in compliance with the terms and conditions of the grant award; and to determine the appropriate funding level and budget for the next budget period.

**D. MOBILIZATION OF RESOURCES**

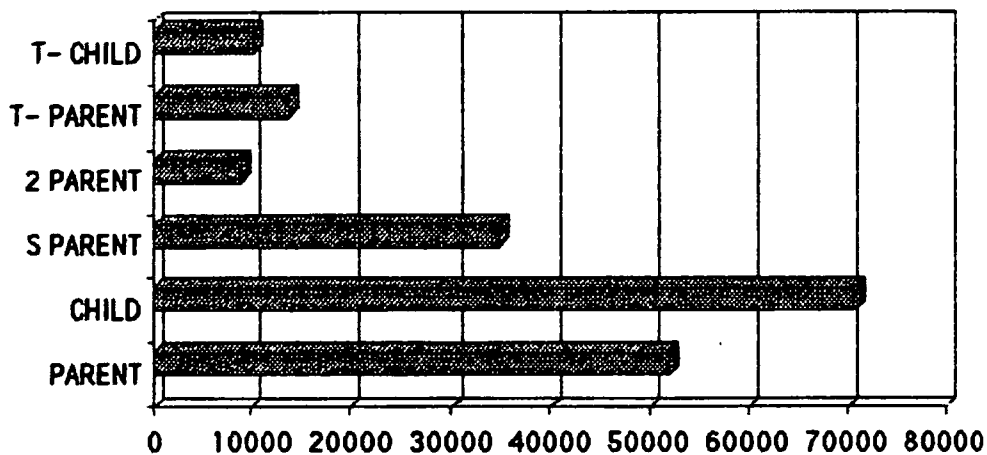
OCS will give favorable consideration in the review process to applicants who mobilize cash and/or third-party in-kind contributions for direct use in the project. The firm commitment of these resources must be documented and submitted with the application in order to be given credit in the review process under the Public-Private Partnerships program element. Except in unusual situations, this documentation must be in the form of letters of commitment from the organization(s)/individual(s) from which resources will be received. Even though there is no matching requirement for the JOLI Program, grantees will be held accountable for any match, cash or in-kind contribution proposed or pledged as part of an approved application. (See Part IV, Element V. and Part VI. B. Instructions for Completing the SF-424A, Section C, *Non-Federal Resources*)

**E. PROGRAM PARTICIPANTS/BENEFICIARIES**

Projects proposed for funding under this Announcement must result in direct benefits to low-income people or persons at or below the poverty line, as defined in the most recent Annual Revision of Poverty Income Guidelines published by DHHS and individuals eligible to receive TANF under Part A of Title IV of the Social Security Act, as amended.

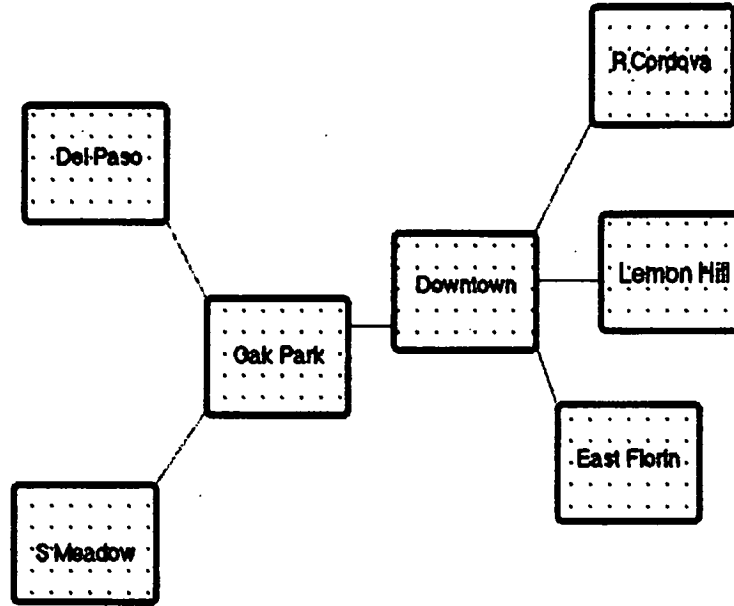
## CAL WILL WORK 1998.

It has historically been the case that services made available to the challenged have been localized away from the neighborhoods that the needs have existed in. Through this sophisticated collaborative we will meet all the needs of welfare parents in their respective neighborhoods. With The California Black Chamber of Commerce; The World Literacy Crusade, The Sacramento Black Alcoholism Center; Building Bridges; The Men of God; The Parent Institute; The Women's Civic Improvement Center; Govender and Associates; The 12th Street Partnership and The Sacramento Civil Rights Network we will make provisions for all of the needs of Welfare families in the neighborhoods that they reside in.

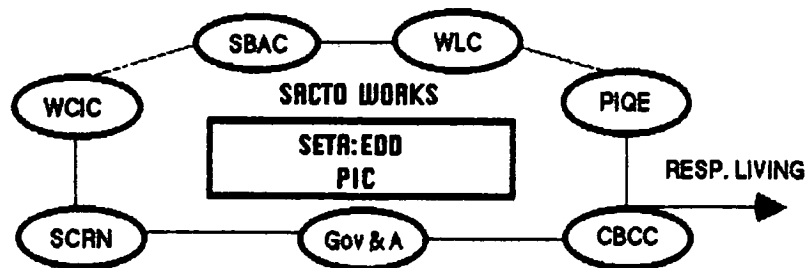


As partners and in conjunction with Sacramento Works Career Centers < S E T A, E D D, P I C >, Cal Will Work Service Providers will receive T A N F families and do a needs assessment by trained counsellors at each center which will house all the provisions that Job club and Job services, Temporary job agency, Sub-Payee services, Vocational assessment training, Life skills training and Youth services will require. The lead agency, Sacramento Black Alcoholism Center in conjunction with The Women's Civic Improvement Center will serve as the beacons to our collaborative. The agencies that serve as collaboratives on this project will access, through our sophisticated network all the professional resources that this project will require so that we may restructure independence, self-sufficiency, self-esteem and self worth amongst all of the welfare recipients that we will serve. This system is designed to cater to a large body of Welfare recipients that will most definitely need the projects services.

**SACRAMENTO WORKS CAREER  
CENTERS**



Each facility will be staffed with trained counselor's that will review each and every parent and provide a needs assessment that will then generate through the custom designed software the needs that each family will require. Each satellite center will have all the resources that will facilitate the training process. The centers will also house Montessori Child Care < in kind >, 4 - 5 program training facilities and all of the hardware required to run the project programs. The infrastructure will be defined by web-sites and interactive by e-mail and faxes.



**PLACEMENT per PERSON COST**

<i>People</i>	<i>Term</i>	<i>\$</i>	<i>Subsidy</i>	<i>\$ per Person</i>
9600	<i>Per 12 months</i>	2,700,000.00	<i>\$6.00 per hour</i>	281.25
<i>Placement</i>				
1000	<i>Per 4 months</i>	3,840,000.00		3,840.00
<i>Benefits</i>	<i>25 %</i>	960,000.00		960.00
<i>Total</i>		7,500,000.00		5,081.25

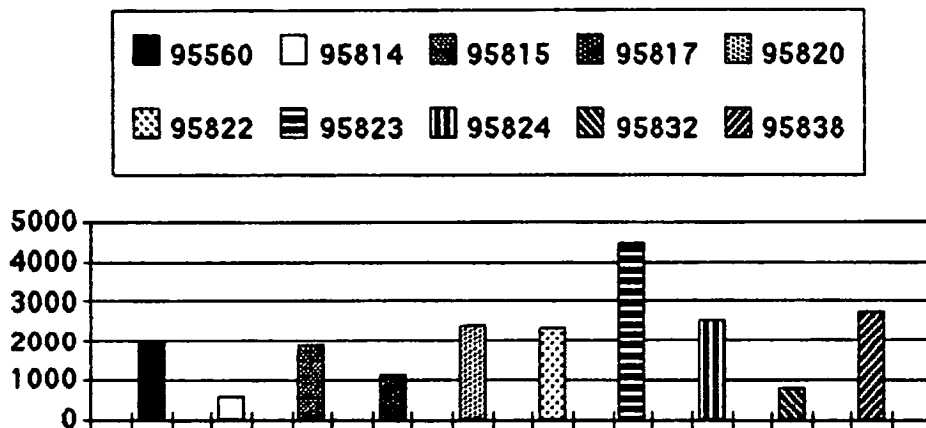
With \$500,000.00 of D H H S funds we will be able to train 924 T A N F parents and place 50 T A N F parents into responsible, respectable subsidized employment which will lead to permanent employment, and will access additional funds so that we may be able to place other parents, that meet our rigid placement criteria, into permanent employment

Additional in kind resources and or funding sources will be The City of Sacramento, The County of Sacramento, The Governor's 15% set aside for Special Projects, The Sacramento Employment and Training Agency < S E T A >, Title V funding and Corporate support. With a successful program in place we expect that additional funding will become available.

<i>People</i>	<i>Term</i>	<i>\$</i>	<i>Subsidy</i>	<i>\$ per Person</i>
924	<i>12 months</i>	260,000.00	<i>\$6.00 per hour</i>	281.25
<i>Placement</i>				
50	<i>Per 4 months</i>	192,000.00		3,840.00
<i>Benefits</i>		48,000.00		960.00
<i>Total</i>		500,000.00		5,081.25

CAL *WILL* WORK is a dynamic, technologically sophisticated mechanism that will seek to transition welfare parents into the workforce so that they may continue with security, support, self-confidence, self-esteem and self-worth hence helping define and secure a healthier society.

The strength in this effort is the character of the collaborative which is multi-faceted, multi-ethnic, grass roots, corporate and religious in nature and expects to institute change in the neighborhoods that define this need, the need for welfare families to transition into self-supportive, responsible lifestyles. A strategically defined infrastructure of CAL *WILL* WORK satellite systems will localize the service providers into the neighborhoods that have displayed this need. As zip codes and supervisorial districts population groups were researched we designed these locations to serve the highest population in need. Locations can be viewed on attachments and will serve these respective regions. Satellite Del Paso, Satellite Ranch Cordova, Satellite Downtown, Satellite Oak Park, Satellite E Florin and Satellite Meadowview.



These strategic locations allow us to bring in the services to the neighborhoods where the immediate needs exist in. The satellite systems will house all the hardware listed so that they may all interact with each other and the service providers. Web Sites will allow people, that have access, the ability to serve the need on line so that that programs can be implemented as scheduling permits.

Trained counselors will interview clients and do a needs assessment on the computer systems and review the parent and its child care needs. This information entered into the system now, through customized software definition, will generate work lists to the respective service providers that are defined into the collaborative, who will then schedule its programs as the need is defined. This information now becomes the research that will provide vital information to the Evaluation process of this project. Each satellite system will hold 5-6 lecture facilities which will house the pre-scheduled programs that have been deemed necessary by the clinical staff. All parents will be tracked and progress reports maintained so that an effective impacting program is realized. Alcohol and Drug Abuse, Literacy, Model Approach to Partnership Parenting, Family services, Mentor Programs, Life Skills, Job Club and Job Services, Temporary Job Agency, Vocational Assessment testing and Youth Services will be provided.

Staff at the satellite center will serve a multi-purpose need for they will be a part of the satellite that the neighborhood will continually interact with so that concerns are addressed and all needs met. The unique feature in this satellite mechanism is that the program services will be mobile and will meet the challenges of each respective neighborhood in its own backyard. The satellite is also defined to serve as the Job club and Job search center where parents and there children, meeting and passing all the program requirements, will be able to access facility hardware and services as the local neighborhood job club stop for Job Club, Job Search and contributing services.

	8.00 - 9.30	10.0 - 11.30	1.00 - 2.30	3.00 - 4.30
WCIC	20	20	20	20
SBAC	20	20	20	20
WLC	20	20	20	20
MOG	20	20	20	20
PIQE	20	20	20	20
TOTAL	100	100	100	100
CBCC	Job Placement as it becomes defined			
	3 month term			
	400 per day	400 per term	2400 - 6 Sat	9600 - Year

Programs will be scheduled by project staff via computer and relayed to the respective program director, at which point, programs will be implemented at each respective sight. These facilities are designed to provide services to 20

people per session at maximum. Tracking progress the client will then be referred to the next program of need until all requirements are met for transition into the Job Training component.

Youth Services < 12 - 18 > will be designed to prevent juvenile delinquency by offering after school programs focusing on reinforcing positive change and individual responsibility. The program shall include recreational activities, academic enrichment, counseling, life skills, and job preparation assistance.

The Life Skills component will teach clients how to regain control of their lives in a supportive environment through counseling in personal and family health, nutrition, money management, legal rights and responsibilities, community resources, child care and parenting issues, transportation issues, organizational skills to enhance job success and the ability to cope with setbacks.

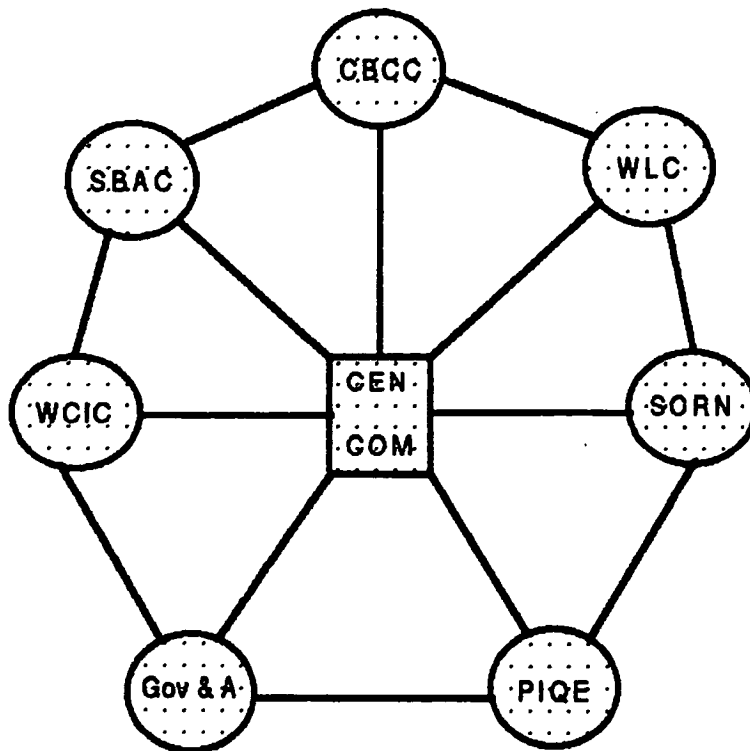
Temporary Job Agency needs will be provided by the California Black Chamber of Commerce whereby recipients transitioning from welfare to work will be provided temporary jobs that will lead to unsubsidized permanent employment by minimizing employer risk. In addition C B C C will provide one on one mentoring for personal and professional support, onsite visits and meeting with employer's supervisor's and providing workers compensation of all persons placed by the agency.

Job Club and Job Search services will encompass a multitude of programs that will assist with job search methods, resume development, proper job interviewing skills, understanding employer requirements and expectations and enhancement of self-esteem, image, motivation and self-confidence. The satellite centers shall make all the provisions to the clients so that they have access to, telephones in a healthy work environment, job orders, direct referrals and interviews with potential employer's and have the ability to research occupations of interest within the local labor market. All provisions will be made to the family in order to facilitate this entire process.



## EVALUATION

An added component to compliment all this activity is the tracking mechanism that will be defined into the software. The research will be conducted by the system while the project is live and all or any of the information will be available at any time to reflect the progress of any one client, agency, satellite, program and all related information as it reflects the success of the project. This will allow us to modify any flaw that may become evident whilst the project is being implemented. Research is the important component here so that we may track the success rate of each component and modify any one component if the need exists. We will be able to reflect tracking of employed parents compared to the number of entrants and also access the business component of participants, all this through a unique access coding system. Live research whilst the project is being implemented. Our staff will be equipped with a Research Chemist who will ensure effective evaluation and research of the project.



CENTRAL COMPUTER SYSTEM

## SERVICE PROVIDERS

### SACRAMENTO BLACK ALCOHOLISM CENTER

With Mr. Joe Ganaway at the helm the S B A C has impacted this local community with positive results. S B A C has served this local community for 23 years. With a successful program in application we will provide the programs application to the satellite systems and impact these respective communities with positive change. The Drug & Alcohol recovery program has served this community well and is designed to custom fit each need as it becomes defined.

### THE WOMEN'S CIVIC IMPROVEMENT COUNSELING CENTERS

Ms Sarah Richie has indeed, served this community here in Sacramento for a number of year's and her reputation precedes her. W C I C has been localized here in the Heart of Oak Park serving needy families, the complexities of which are many, for 60 years. W C I C will serve each satellites needs whilst still being localized here in Oak Park. Counselor's will serve all of the satellites so that no families need is unadressed or unresolved. These satellite centers will allow us to serve the respective neighborhoods in need.

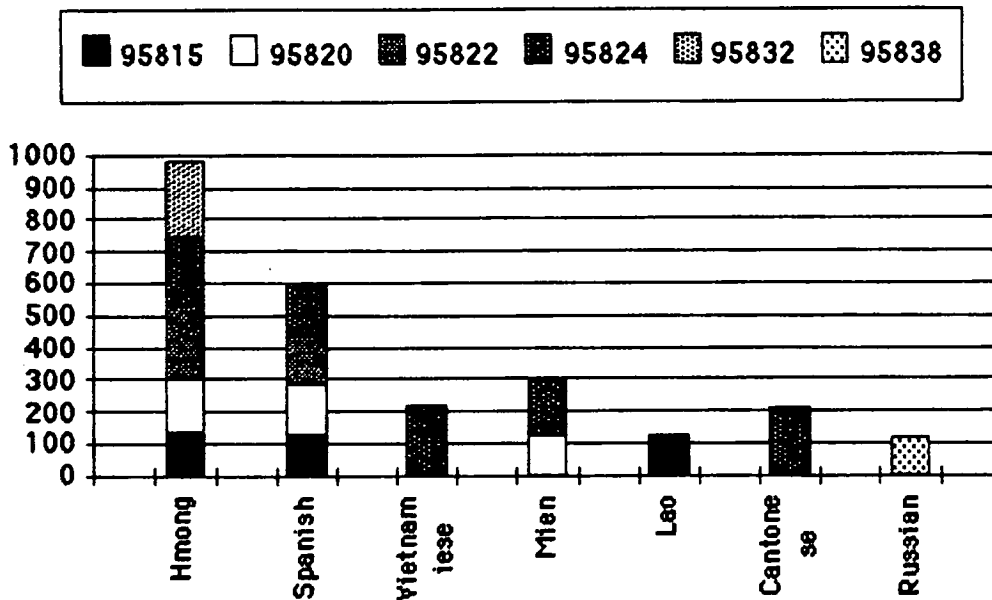
### THE MEN OF GOD

With Potter's House Church of God and Christ in the North and with Cathedral of Praise and Worship in the South we will direct into the satellite system all parents that are willing to participate through the church environment. The Men of God will also provide mentors for classes to be conducted throughout the satellite mechanism throughout the county.

### THE SACRAMENTO CIVIL RIGHTS NETWORK

As Co-Chairpersons to the S C R N, Mr. Efren Guttierrez and Mr. Vilasen Govender have galvanized a unique multi-ethnic, multi-cultural, gender friendly coalition that has unified local grass roots leadership into developing a common vision, one that will benefit this entire community. Through the S C R N, the Chicano Consortium and Sacramento Economic Empowerment Congress, we will be able to interface with the Latino community, the Hmong Community, The Asian Community, The African American Community and the Gay & Lesbian Community. Our infrastructure will be able to cope with multi-lingual influence by accessing bi-lingual counselors from this community to serve this community. We will

define the programs to serve all of this community ensuring that we are not insensitive to the need of our Caucasian brother's and sister's.



THE 12th STREET PARTNERSHIP < in kind >

Montessori based child-care provisions will be made to each satellite so that parents engaging in program services, will have access to child care on sight so as to ensure full co-operation by parents for successful program outcomes. Montessori child care has a proven track record and has served many city's and communities across this nation and will provide the quality child care that is needed. Montessori training programs will also serve the satellite system.

THE PARENT INSTITUTE < matching funds >

A key component to all of this effort is the parent child relationship and how that interacts with the school to ensure strong development both in and out of school promoting school success and academic achievement. This is the core nucleus of society and only with strong parent-child, student-teacher relationships can schools flourish and produce the kind of graduates we would all like to see. Violence and social confusion is a direct result of this void. The Parent Institute will fill this void with it's proven program application, bringing parents back onto school grounds addressing crucial issues and finding solutions together for the benefit of the child whilst building alliances with the teacher .

### THE CALIFORNIA BLACK CHAMBER OF COMMERCE

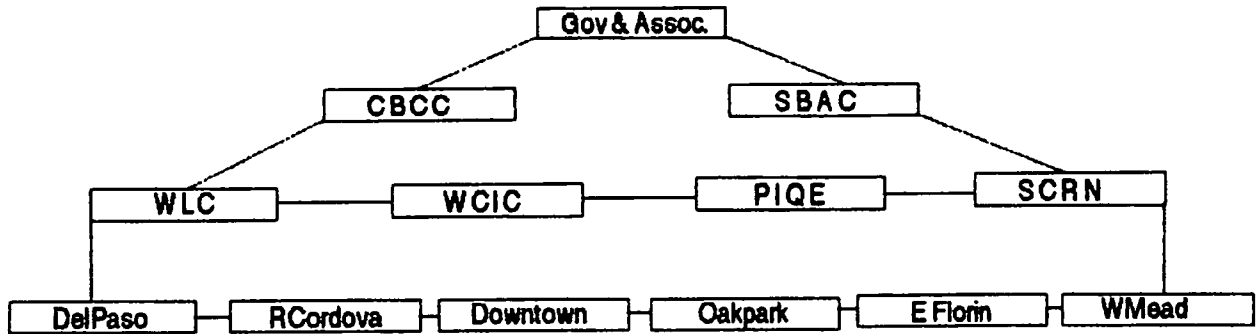
Mr. Aubrey Stone, C E O at C B C C, has been involved in this community for 3 years. C B C C's influence is statewide and will allow us to interact and involve commercial influence throughout the state hence a larger job creation task force in the heart of California's small business and corporate influence. The Chamber will promote job creation by providing subsidized employment to transition into un-subsidized employment. Potential employees that have passed all the criteria that the programs require will then be allowed to access these jobs though job training, job club and job services programs. The California Black Chamber of Commerce will also provide mentor's to the satellite system's so that their influence and experience is shared with those who need direction.

### THE WORLD LITERACY CRUSADE

Mr. Jim Woodsworth, leading the local effort of The World Literacy Crusade to impact the problem of illiteracy here in our society, will impact the satellite systems with the W L C's application to define change amongst clients so that they may enter the job market with all the benefits that come with being literate. This is a very important component to achieving success in the workplace and at school or university, the ability to apply oneself with confidence.

### GOVENDER & Associates.

Local community leadership drives this body of professionals who bring some unique influence into the mechanism. Having designed the project, we will be able to manage very effectively the proper implementation of program services and provide executive direction to all of its partner's in this collaborative effort. Aboard this team is an Accountant, a Clinical Psychologist, a Senior Computer Programs Analyst, two independent Attorneys and a Research Chemist who all bring in their respective talents to compliment a successful program.



BOARD OF DIRECTOR'S at CAL will WORK 1998

**SACRAMENTO BLACK ALCOHOLISM CENTER <S B A C >**

Mr. Joe Ganaway : EXECUTIVE DIRECTOR

**THE WOMENS CIVIC IMPROVEMENT AND COUNSELLING CENTERS <W C I C >**

Mrs. Sarah Richey : EXECUTIVE DIRECTOR

**THE SACRAMENTO CIVIL RIGHTS NETWORK <S C R N >**

Mr. Efren Guttierrez : CO - CHAIRPERSON

**THE 12th STREET PARTNERSHIP**

P. Buchanegra : EXECUTIVE - DIRECTOR

**THE PARENT INSTITUTE**

Antonia Lopez : EXECUTIVE - DIRECTOR

**THE CALIFORNIA BLACK CHAMBER OF COMMERCE <C B C C >**

Mr. Aubrey Stone : PRESIDENT / C E O

**THE WORLD LITERACY CRUSADE <W L C >**

Mr. Jim Woodsworth : CHAIRMAN OF THE BOARD

**GOVENDER & Assoc. < Govender & Assoc >**

Mr. P.M. Govender : PRESIDENT / C E O