

20



CITY OF SACRAMENTO

APPROVED
BY THE CITY COUNCIL

DEPARTMENT OF PUBLIC WORKS

March 4, 1985

MAR 12 1985

OFFICE OF THE
CITY CLERK

Administration, Rm. 300	(916) 449-5307
Architecture, Rm. 302	(916) 449-5307
Civil Engineering, Rm. 207	(916) 449-5281
Construction, Rm. 207	(916) 449-5281
Electrical Engineering, Rm. 304	(916) 449-5287
Real Estate, Rm. 300	(916) 449-5307
Traffic Engineering, Rm. 300	(916) 449-5307

ENGINEERING

City Council
Sacramento, California

CITY MANAGER'S OFFICE
RECEIVED
MAR 6 1985

Honorable Members In Session:

SUBJECT: Approval of Final Subdivision Maps and Agreements for Land Park Estates Units No 1 & 2. Improvement Proceeding Nos. 5448 and 5449

SUMMARY:

It is requested that the City Council adopt a Resolution approving the final Subdivision Maps and Agreements for Land Park Estates Units No. 1 and 2. Said Subdivisions are located in the vicinity of South Land Park Drive and Seamas Avenue. Adoption of the Resolution is recommended.

BACKGROUND INFORMATION:

On March 6, 1984, the City Council approved tentative Subdivision Maps, by adopting Resolution No. 84-182.

All conditions and stipulations set forth in the staff subdivision report have been complied with and the final Subdivision Maps are now being presented for final approval.

FINANCIAL DATA:

All costs pertaining to the subdivisions are being paid by the subdivider.

RECOMMENDATION:

It is recommended that the attached Resolution approving the final Subdivision Maps and Agreements be adopted.

Respectfully submitted,

Thomas M. Fixley
Engineering Division Manager

Recommendation Approved

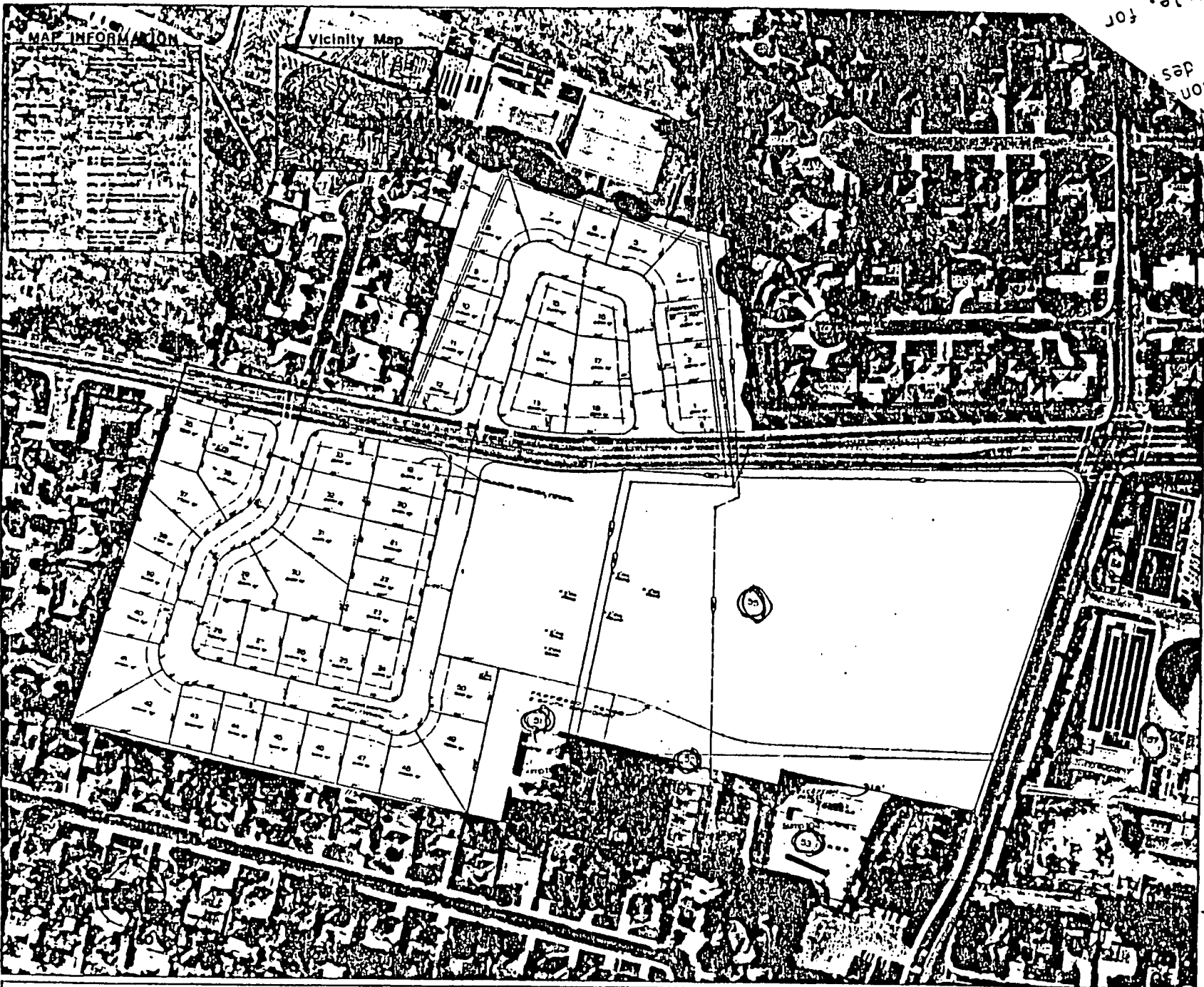
Walter J. Slupe
City Manager

Approved:

Melvin H. Johnson
Director of Public Works

BF:yg
Attachments

March 12, 1985
DISTRICT NO. 4



Tentative Subdivision Map for Sacramento Regional County Sanitation District
SURPLUS LAND-CITY MAIN TREATMENT PLANT



feasible, for
 existing
 suitable con
 Quality con
 its have a des

P 83287

20

P 83-287

10-27-83

Ms

RESOLUTION NO. 85-177

ADOPTED BY THE SACRAMENTO CITY COUNCIL ON DATE OF

MARCH 12TH, 1985

APPROVED
BY THE CITY COUNCIL

MAR 12 1985

APPROVING FINAL SUBDIVISION MAPS FOR LAND PARK
ESTATES UNITS NO. 1 AND 2
(P-83-287)

OFFICE OF THE
CITY CLERK

AG 8457
AG 8458

WHEREAS, THE COUNCIL OF THE CITY OF SACRAMENTO FINDS AND
DETERMINES AS FOLLOWS:

A. The final Subdivison Maps of Land Park Estates Units No. 1 and 2, together with provisions for the design and improvement, is consistent with the General Plan of the City of Sacramento and the Sutterville Heights Community Plan.

B. The final maps are in substantial compliance with the previously approved tentative maps.

NOW, THEREFORE, BE IT RESOLVED BY THE COUNCIL OF THE CITY OF SACRAMENTO AS FOLLOWS:

1. The final Subdivisions Maps of Land Park Estates Units No. 1 and 2, be, and the same is hereby approved subject to the execution by all parties of the subdivision improvement agreements for the subdivisions.

2. All offers of dedication shown on said maps are hereby accepted, subject to the improvements thereof required by the subdivision agreements.

3. The City Manager and City Clerk be authorized and directed to execute on behalf of the City of Sacramento those certain Subdivision Improvement Agreements (and abstracts thereof) between the City and Land Park Ltd., a California limited partnership with Leasco Realty Co., Inc., a corporation general partner, to provide for the subdivision improvements required by the Subdivision Map Act and Chapter 40 (Subdivision Regulations) of the Sacramento City Code.

4. The Real Estate Supervisor is authorized and directed to record the abstracts of the above-mentioned agreements in the official records of Sacramento County.

MAYOR

ATTEST:

CITY CLERK

April 1, 1985

Mr. Dale A. Williams
Land Park Limited
6309 Auburn Boulevard
Citrus Heights, CA 95610

Dear Mr. Williams:

On March 12, 1985, the Sacramento City Council adopted a resolution authorizing the execution of Agreement Nos. 84157 and 84158 between the City of Sacramento and Land Park Limited approving the final map for Land Park Estates, Units 1 and 2.

Enclosed, for your records, is one fully certified copy of each agreement and authorizing resolution.

Sincerely,

Lorraine Magana
City Clerk

Janice Beaman
Deputy City Clerk

LM/JB/dah/20
Enclosure

cc: Public Works
Risk Management