

RESOLUTION NO. 2005-180  
ADOPTED BY THE SACRAMENTO CITY COUNCIL  
ON THE DATE OF MAR 22 2005

**RESOLUTION TO APPROVE THE MASTER PLAN, MITIGATED NEGATIVE DECLARATION, MITIGATION REPORTING PLAN AND FINANCIAL ACTIONS FOR THE DEVELOPMENT OF JIBBOOM STREET PARK PHASE II CIP (PN: LZ11)**

**BE IT RESOLVED BY THE COUNCIL OF THE CITY OF SACRAMENTO:**

**WHEREAS**, the City Council has accepted \$2,010,000 in competitive grant funding for the development of Jibboom Street Park.

**WHEREAS**, the City Council has identified the Jibboom Street Park site as one of the priority projects in the first 5-year implementation period of the Sacramento Riverfront Master Plan.

**WHEREAS**, the Environmental Coordinator has prepared a Mitigated Negative Declaration for the above identified project;

**WHEREAS**, the project Mitigated Negative Declaration finds that the proposed project will not have a significant effect on the environment provided that mitigation measures are added to the above identified project;

**WHEREAS**, the Environmental Coordinator has prepared a Mitigation Monitoring Plan for ensuring compliance and implementation of the mitigation measures as prescribed in the Initial Study for the above identified project; and

**WHEREAS**, in accordance with Section 21081.6 of the California Public Resources Code, the City of Sacramento requires that a Mitigation Monitoring Plan be developed for implementing mitigation measures as identified in the Initial Study for the project;

**WHEREAS**, this project Mitigated Negative Declaration reflects the lead agency's independent judgment and analysis;

Based upon the record as a whole, including the Initial Study and in the City Council's exercise of its independent judgment, there is no substantial evidence, either individually limited or cumulatively considerable, that the project will have a significant effect on the environment.

---

**FOR CITY CLERK USE ONLY**

Resolution No.: 2005-180  
Date Adopted: MAR 22 2005

**The City Council hereby:**

1. Approves the Master Plan for Jibboom Street Park attached as Exhibit A,
2. Approves the Mitigated Negative Declaration and Mitigation Reporting Plan for Jibboom Street Park,
3. Closes the Jibboom Street Rehabilitation/Park Project CIP (PN: ZJ46) and transfers the fund balance \$510,000 (Fund 512) and \$246,866 (Fund 413) to the Jibboom Street Park Phase II CIP (PN: LZ11), and
4. Authorizes staff to advertise a Request for Qualifications/Proposals to solicit responses to the RFQ/PC from interested development teams in order to select a qualified developer for development of the historic power building at the Jibboom Street Park site based upon the following principles:
  - a. The project must ensure public access to the Sacramento River;
  - b. Preference will be given to projects that do not require public funds or have a limited need for public funding;
  - c. Preference will be given to projects that do not use space beyond the footprint of the building, and
  - d. The project should be a "destination attraction."

HEATHER FARGO

\_\_\_\_\_  
MAYOR

ATTEST:

SHIRLEY CONCOLINO

\_\_\_\_\_  
CITY CLERK

\_\_\_\_\_  
**FOR CITY CLERK USE ONLY**

Resolution No.: \_\_\_\_\_

2005-180

Date Adopted: \_\_\_\_\_

MAR 22 2005

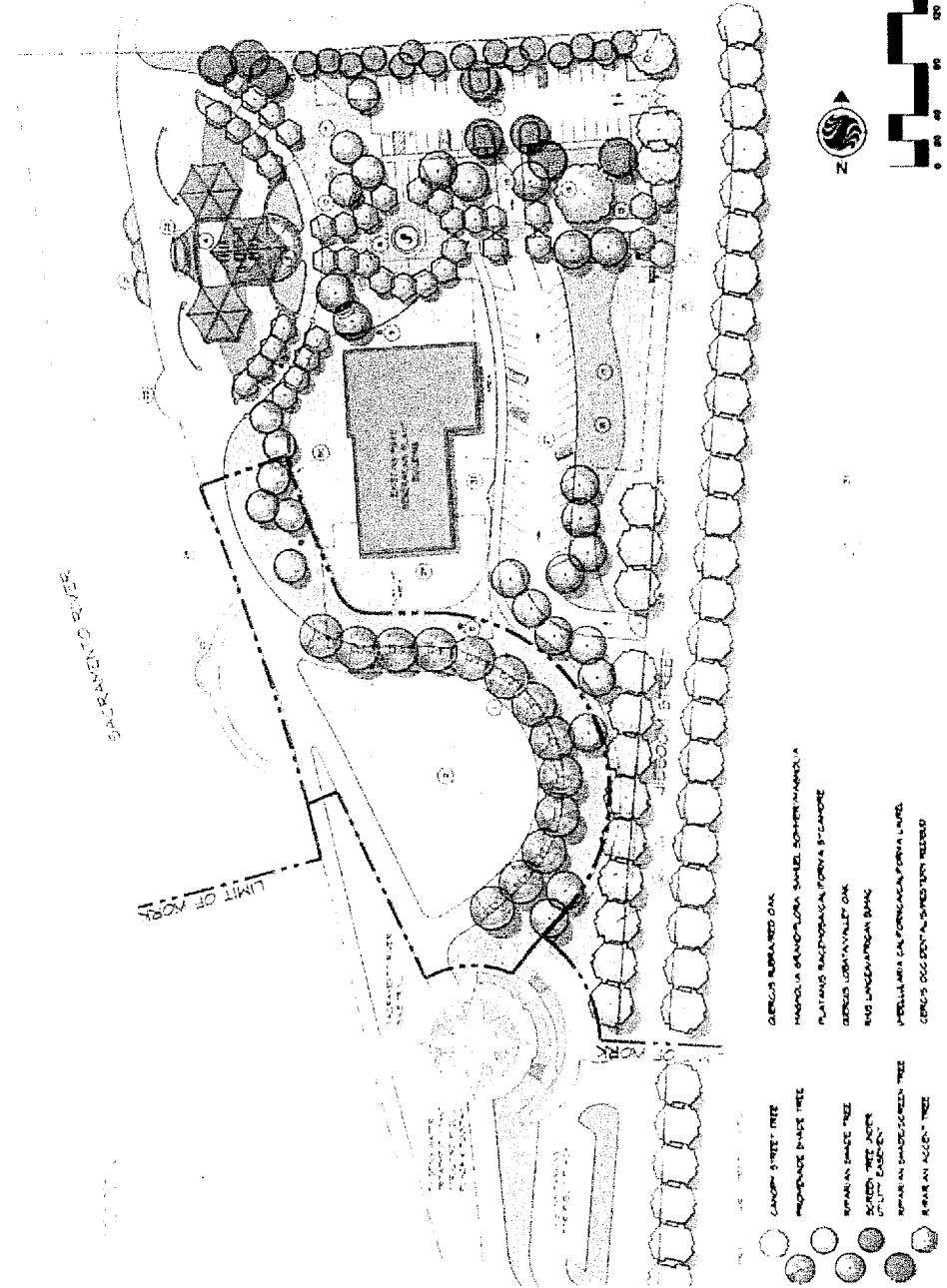
**MATER PLAN LEGEND**

**PHASE 1 IMPROVEMENTS**

- 1. NEW FACILITY AND/OR A SIGNIFICANT IMPROVEMENT TO EXISTING FACILITY
- 2. IMPROVED TURF RIVER AREAS
- 3. PARKING PLAZA LOCATED IN RELATION WITH A PROPOSED PLAZA

**PHASE 2 IMPROVEMENTS**

- 1. MAKE IMPROVING AREA A PARKING SPACE (LANDSCAPED AREA) "TYPICALLY" SIZED TO ACCOMMODATE APPROXIMATELY 10 PEOPLE
- 2. VISUAL SCREENING AT SOUTH END OF CONCOURSE AREA (CONCOURSE AND SIGNAGE TO MATCH DESIGN AT ADJACENT IN-PARK STRUCTURE)
- 3. CONCRETE ACCESS RAMP (TO WEST FROM PARKING LOT TO LEASE TRAIL) ACCESSIBLE TO MAINTENANCE & WATERING JOBS (CITY)
- 4. RESTROOM BUILDING ACCESS TO GROUP HOME
- 5. IMPROVE PLAZA FROM PARKING LOT TO LEASE TRAIL (PROVIDE VISUAL SCREENING AT SOUTH END OF CONCOURSE AND SIGNAGE TO MATCH DESIGN AT ADJACENT IN-PARK STRUCTURE)
- 6. RELOCATED PORT ELECTRICAL TRANSMISSION TOWER
- 7. INFORMAL CONCOURSE AREAS
- 8. ONLY 10 PARKING SPACES TO BE SPACES WITH PERMISSIBLE PAVEMENT SURFACING
- 9. VISUAL ACCESS BARRIERS TO ENTRY PLAZA
- 10. IMPROVE PARKING AT PERMISSIBLE ENTRY
- 11. VISUAL SCREENING AT SOUTH END OF CONCOURSE
- 12. VISUAL SCREENING AT SOUTH END OF CONCOURSE
- 13. VISUAL SCREENING AT SOUTH END OF CONCOURSE
- 14. VISUAL SCREENING AT SOUTH END OF CONCOURSE
- 15. VISUAL SCREENING AT SOUTH END OF CONCOURSE
- 16. VISUAL SCREENING AT SOUTH END OF CONCOURSE
- 17. VISUAL SCREENING AT SOUTH END OF CONCOURSE
- 18. VISUAL SCREENING AT SOUTH END OF CONCOURSE
- 19. VISUAL SCREENING AT SOUTH END OF CONCOURSE
- 20. VISUAL SCREENING AT SOUTH END OF CONCOURSE
- 21. VISUAL SCREENING AT SOUTH END OF CONCOURSE
- 22. VISUAL SCREENING AT SOUTH END OF CONCOURSE
- 23. VISUAL SCREENING AT SOUTH END OF CONCOURSE
- 24. VISUAL SCREENING AT SOUTH END OF CONCOURSE
- 25. VISUAL SCREENING AT SOUTH END OF CONCOURSE
- 26. VISUAL SCREENING AT SOUTH END OF CONCOURSE
- 27. VISUAL SCREENING AT SOUTH END OF CONCOURSE
- 28. VISUAL SCREENING AT SOUTH END OF CONCOURSE
- 29. VISUAL SCREENING AT SOUTH END OF CONCOURSE
- 30. VISUAL SCREENING AT SOUTH END OF CONCOURSE
- 31. VISUAL SCREENING AT SOUTH END OF CONCOURSE
- 32. VISUAL SCREENING AT SOUTH END OF CONCOURSE
- 33. VISUAL SCREENING AT SOUTH END OF CONCOURSE
- 34. VISUAL SCREENING AT SOUTH END OF CONCOURSE
- 35. VISUAL SCREENING AT SOUTH END OF CONCOURSE
- 36. VISUAL SCREENING AT SOUTH END OF CONCOURSE
- 37. VISUAL SCREENING AT SOUTH END OF CONCOURSE
- 38. VISUAL SCREENING AT SOUTH END OF CONCOURSE
- 39. VISUAL SCREENING AT SOUTH END OF CONCOURSE
- 40. VISUAL SCREENING AT SOUTH END OF CONCOURSE
- 41. VISUAL SCREENING AT SOUTH END OF CONCOURSE
- 42. VISUAL SCREENING AT SOUTH END OF CONCOURSE
- 43. VISUAL SCREENING AT SOUTH END OF CONCOURSE
- 44. VISUAL SCREENING AT SOUTH END OF CONCOURSE
- 45. VISUAL SCREENING AT SOUTH END OF CONCOURSE
- 46. VISUAL SCREENING AT SOUTH END OF CONCOURSE
- 47. VISUAL SCREENING AT SOUTH END OF CONCOURSE
- 48. VISUAL SCREENING AT SOUTH END OF CONCOURSE
- 49. VISUAL SCREENING AT SOUTH END OF CONCOURSE
- 50. VISUAL SCREENING AT SOUTH END OF CONCOURSE
- 51. VISUAL SCREENING AT SOUTH END OF CONCOURSE
- 52. VISUAL SCREENING AT SOUTH END OF CONCOURSE
- 53. VISUAL SCREENING AT SOUTH END OF CONCOURSE
- 54. VISUAL SCREENING AT SOUTH END OF CONCOURSE
- 55. VISUAL SCREENING AT SOUTH END OF CONCOURSE
- 56. VISUAL SCREENING AT SOUTH END OF CONCOURSE
- 57. VISUAL SCREENING AT SOUTH END OF CONCOURSE
- 58. VISUAL SCREENING AT SOUTH END OF CONCOURSE
- 59. VISUAL SCREENING AT SOUTH END OF CONCOURSE
- 60. VISUAL SCREENING AT SOUTH END OF CONCOURSE
- 61. VISUAL SCREENING AT SOUTH END OF CONCOURSE
- 62. VISUAL SCREENING AT SOUTH END OF CONCOURSE
- 63. VISUAL SCREENING AT SOUTH END OF CONCOURSE
- 64. VISUAL SCREENING AT SOUTH END OF CONCOURSE
- 65. VISUAL SCREENING AT SOUTH END OF CONCOURSE
- 66. VISUAL SCREENING AT SOUTH END OF CONCOURSE
- 67. VISUAL SCREENING AT SOUTH END OF CONCOURSE
- 68. VISUAL SCREENING AT SOUTH END OF CONCOURSE
- 69. VISUAL SCREENING AT SOUTH END OF CONCOURSE
- 70. VISUAL SCREENING AT SOUTH END OF CONCOURSE
- 71. VISUAL SCREENING AT SOUTH END OF CONCOURSE
- 72. VISUAL SCREENING AT SOUTH END OF CONCOURSE
- 73. VISUAL SCREENING AT SOUTH END OF CONCOURSE
- 74. VISUAL SCREENING AT SOUTH END OF CONCOURSE
- 75. VISUAL SCREENING AT SOUTH END OF CONCOURSE
- 76. VISUAL SCREENING AT SOUTH END OF CONCOURSE
- 77. VISUAL SCREENING AT SOUTH END OF CONCOURSE
- 78. VISUAL SCREENING AT SOUTH END OF CONCOURSE
- 79. VISUAL SCREENING AT SOUTH END OF CONCOURSE
- 80. VISUAL SCREENING AT SOUTH END OF CONCOURSE
- 81. VISUAL SCREENING AT SOUTH END OF CONCOURSE
- 82. VISUAL SCREENING AT SOUTH END OF CONCOURSE
- 83. VISUAL SCREENING AT SOUTH END OF CONCOURSE
- 84. VISUAL SCREENING AT SOUTH END OF CONCOURSE
- 85. VISUAL SCREENING AT SOUTH END OF CONCOURSE
- 86. VISUAL SCREENING AT SOUTH END OF CONCOURSE
- 87. VISUAL SCREENING AT SOUTH END OF CONCOURSE
- 88. VISUAL SCREENING AT SOUTH END OF CONCOURSE
- 89. VISUAL SCREENING AT SOUTH END OF CONCOURSE
- 90. VISUAL SCREENING AT SOUTH END OF CONCOURSE
- 91. VISUAL SCREENING AT SOUTH END OF CONCOURSE
- 92. VISUAL SCREENING AT SOUTH END OF CONCOURSE
- 93. VISUAL SCREENING AT SOUTH END OF CONCOURSE
- 94. VISUAL SCREENING AT SOUTH END OF CONCOURSE
- 95. VISUAL SCREENING AT SOUTH END OF CONCOURSE
- 96. VISUAL SCREENING AT SOUTH END OF CONCOURSE
- 97. VISUAL SCREENING AT SOUTH END OF CONCOURSE
- 98. VISUAL SCREENING AT SOUTH END OF CONCOURSE
- 99. VISUAL SCREENING AT SOUTH END OF CONCOURSE
- 100. VISUAL SCREENING AT SOUTH END OF CONCOURSE



- 1. CERCIS RUBRA RED OAK
- 2. MAGNOLIA GRANDIFLORA SWAMP SOFTER MAGNOLIA
- 3. PLATANUS RADICATA COMMON Sycamore
- 4. QUERCUS LAEVA WHITE OAK
- 5. RUS COCAINIFERA BARK
- 6. MELALEUCA CALIFORNICA FORMA LINDL
- 7. CERCIS OCCIDENTALIS SWAMPY RED OAK

- 1. CANYON STREET TREE
- 2. PROSTRATE PRUNUS TREE
- 3. SPANISH PRUNUS TREE
- 4. SPANISH PRUNUS TREE
- 5. SPANISH PRUNUS TREE
- 6. SPANISH PRUNUS TREE
- 7. SPANISH PRUNUS TREE
- 8. SPANISH PRUNUS TREE
- 9. SPANISH PRUNUS TREE
- 10. SPANISH PRUNUS TREE
- 11. SPANISH PRUNUS TREE
- 12. SPANISH PRUNUS TREE
- 13. SPANISH PRUNUS TREE
- 14. SPANISH PRUNUS TREE
- 15. SPANISH PRUNUS TREE
- 16. SPANISH PRUNUS TREE
- 17. SPANISH PRUNUS TREE
- 18. SPANISH PRUNUS TREE
- 19. SPANISH PRUNUS TREE
- 20. SPANISH PRUNUS TREE
- 21. SPANISH PRUNUS TREE
- 22. SPANISH PRUNUS TREE
- 23. SPANISH PRUNUS TREE
- 24. SPANISH PRUNUS TREE
- 25. SPANISH PRUNUS TREE
- 26. SPANISH PRUNUS TREE
- 27. SPANISH PRUNUS TREE
- 28. SPANISH PRUNUS TREE
- 29. SPANISH PRUNUS TREE
- 30. SPANISH PRUNUS TREE
- 31. SPANISH PRUNUS TREE
- 32. SPANISH PRUNUS TREE
- 33. SPANISH PRUNUS TREE
- 34. SPANISH PRUNUS TREE
- 35. SPANISH PRUNUS TREE
- 36. SPANISH PRUNUS TREE
- 37. SPANISH PRUNUS TREE
- 38. SPANISH PRUNUS TREE
- 39. SPANISH PRUNUS TREE
- 40. SPANISH PRUNUS TREE
- 41. SPANISH PRUNUS TREE
- 42. SPANISH PRUNUS TREE
- 43. SPANISH PRUNUS TREE
- 44. SPANISH PRUNUS TREE
- 45. SPANISH PRUNUS TREE
- 46. SPANISH PRUNUS TREE
- 47. SPANISH PRUNUS TREE
- 48. SPANISH PRUNUS TREE
- 49. SPANISH PRUNUS TREE
- 50. SPANISH PRUNUS TREE
- 51. SPANISH PRUNUS TREE
- 52. SPANISH PRUNUS TREE
- 53. SPANISH PRUNUS TREE
- 54. SPANISH PRUNUS TREE
- 55. SPANISH PRUNUS TREE
- 56. SPANISH PRUNUS TREE
- 57. SPANISH PRUNUS TREE
- 58. SPANISH PRUNUS TREE
- 59. SPANISH PRUNUS TREE
- 60. SPANISH PRUNUS TREE
- 61. SPANISH PRUNUS TREE
- 62. SPANISH PRUNUS TREE
- 63. SPANISH PRUNUS TREE
- 64. SPANISH PRUNUS TREE
- 65. SPANISH PRUNUS TREE
- 66. SPANISH PRUNUS TREE
- 67. SPANISH PRUNUS TREE
- 68. SPANISH PRUNUS TREE
- 69. SPANISH PRUNUS TREE
- 70. SPANISH PRUNUS TREE
- 71. SPANISH PRUNUS TREE
- 72. SPANISH PRUNUS TREE
- 73. SPANISH PRUNUS TREE
- 74. SPANISH PRUNUS TREE
- 75. SPANISH PRUNUS TREE
- 76. SPANISH PRUNUS TREE
- 77. SPANISH PRUNUS TREE
- 78. SPANISH PRUNUS TREE
- 79. SPANISH PRUNUS TREE
- 80. SPANISH PRUNUS TREE
- 81. SPANISH PRUNUS TREE
- 82. SPANISH PRUNUS TREE
- 83. SPANISH PRUNUS TREE
- 84. SPANISH PRUNUS TREE
- 85. SPANISH PRUNUS TREE
- 86. SPANISH PRUNUS TREE
- 87. SPANISH PRUNUS TREE
- 88. SPANISH PRUNUS TREE
- 89. SPANISH PRUNUS TREE
- 90. SPANISH PRUNUS TREE
- 91. SPANISH PRUNUS TREE
- 92. SPANISH PRUNUS TREE
- 93. SPANISH PRUNUS TREE
- 94. SPANISH PRUNUS TREE
- 95. SPANISH PRUNUS TREE
- 96. SPANISH PRUNUS TREE
- 97. SPANISH PRUNUS TREE
- 98. SPANISH PRUNUS TREE
- 99. SPANISH PRUNUS TREE
- 100. SPANISH PRUNUS TREE

CITY OF SACRAMENTO  
DEPARTMENT OF PARKS & RECREATION  
L 1071  
JIBBOOM STREET PARK  
PARK MASTER PLAN  
DATE: 01/11/2005  
BY: [Signature]

**JIBBOOM STREET PARK  
PARK MASTER PLAN**

Stantec Consulting Inc.  
2000 Venture Court #7  
Sacramento, CA  
95833 916.448.2000  
Fax: 916.448.1974  
www.stantec.com



FOR CITY CLERK USE ONLY

Resolution No.:

2005-100

MAR 23 2005