

33

RESOLUTION NO. 83-047

ADOPTED BY THE REDEVELOPMENT AGENCY OF THE CITY OF SACRAMENTO

ON DATE OF

June 7, 1983

PROJECT MAESTRA
PRELIMINARY ARCHITECTURAL PLANS
BUDGET AMENDMENT

BE IT RESOLVED BY THE REDEVELOPMENT AGENCY OF THE CITY OF SACRAMENTO:


Section 1. The Preliminary Architectural Plans attached hereto, are hereby approved.

Section 2. The Executive Director is directed to prepare Final Architectural Plans and Specifications.

Section 3. The Agency's Capital Improvements Budget is hereby amended by reducing the Project 6 Tax Increment Replacement Housing Budget by \$15,125 from \$244,000 to \$228,875 (0600) and increasing the Project Maestra Budget from \$272,000 to \$287,125 (0630).


CHAIRMAN

ATTEST:


SECRETARY

RESOLUTION No. 83-047

JUN 7 1983

DEAN F. UNGER
 AIA INC.
 ARCHITECTURAL AND
 ENVIRONMENTAL
 PLANNING
 270 Alhambra Blvd
 Alhambra, California 91801
 916-443-3751

**PROJECT
 MAESTRA**

**DAY C.
 COMMUNITY
 CENTER**

937 F STREET
 SACRAMENTO, CALIFORNIA

UNDER THE DIRECTION OF
 SACRAMENTO COUNTY
 DEVELOPMENT AGENCY

REVISION:
 This drawing is not final
 and is not to be used for
 construction without
 approval by the ARCHITECT.

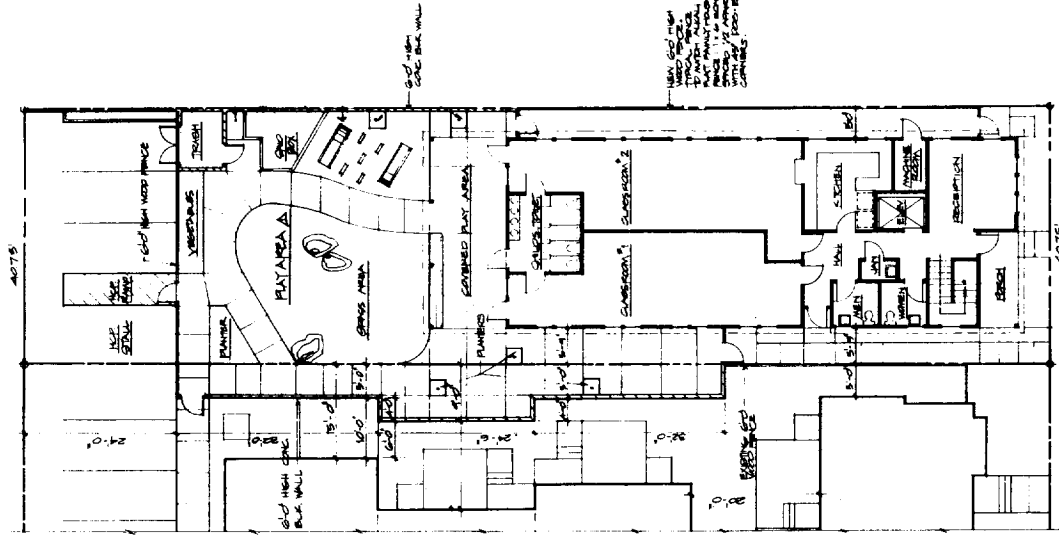
ARCHITECT

Drawn by: S. CARROLL
 Checked by: D. UNGER
 Date: 1-8-81
 Title: 1-2-81
 Drawing No: 1-2-81

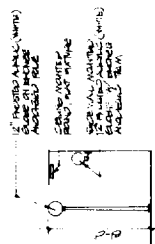
1

Sheet Title:
 Sheet No:

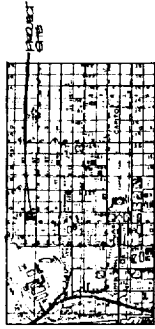
3B



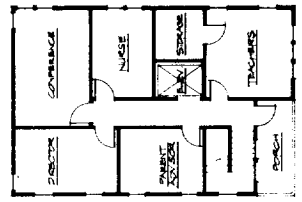
FIRST FLOOR PLAN SITE PLAN



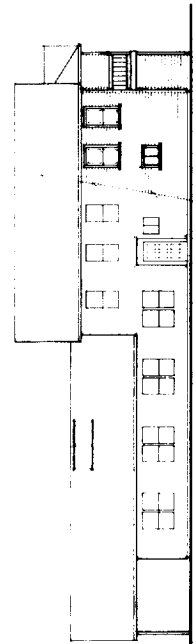
EXTERIOR LIGHT DETAILS



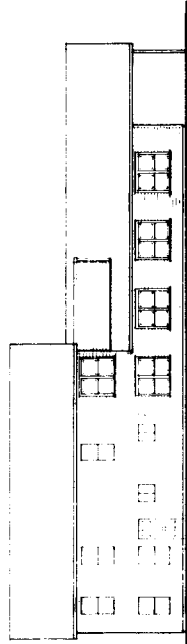
VICINITY MAP



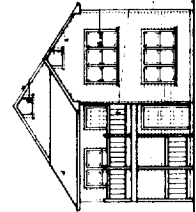
SECOND FLOOR PLAN



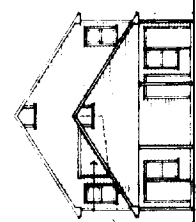
WEST ELEVATION



EAST ELEVATION



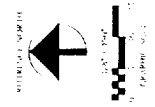
SOUTH ELEVATION



NORTH ELEVATION

BUILDING AREA	15,190 SF
PARKING PROVIDED	4 SPACES
PARKING REQUIRED	4 SPACES
SITE AREA	6,251 SF
CONCRETE SITE AREA	711 SF
TOTAL SITE AREA	2,204 SF

STATISTICS



RESOLUTION No. 83-047

JUN 7 1983

(5)

DEAN E. UNGER
AIA, INC.
ARCHITECTURE AND
PLANNING
700 Alhambra Blvd.
Sacramento, California 95811
916-442-7247

**PROJECT
MAESTRA**

DAY CARE /
COMMUNITY
CENTER

923 F STREET
SACRAMENTO, CALIFORNIA

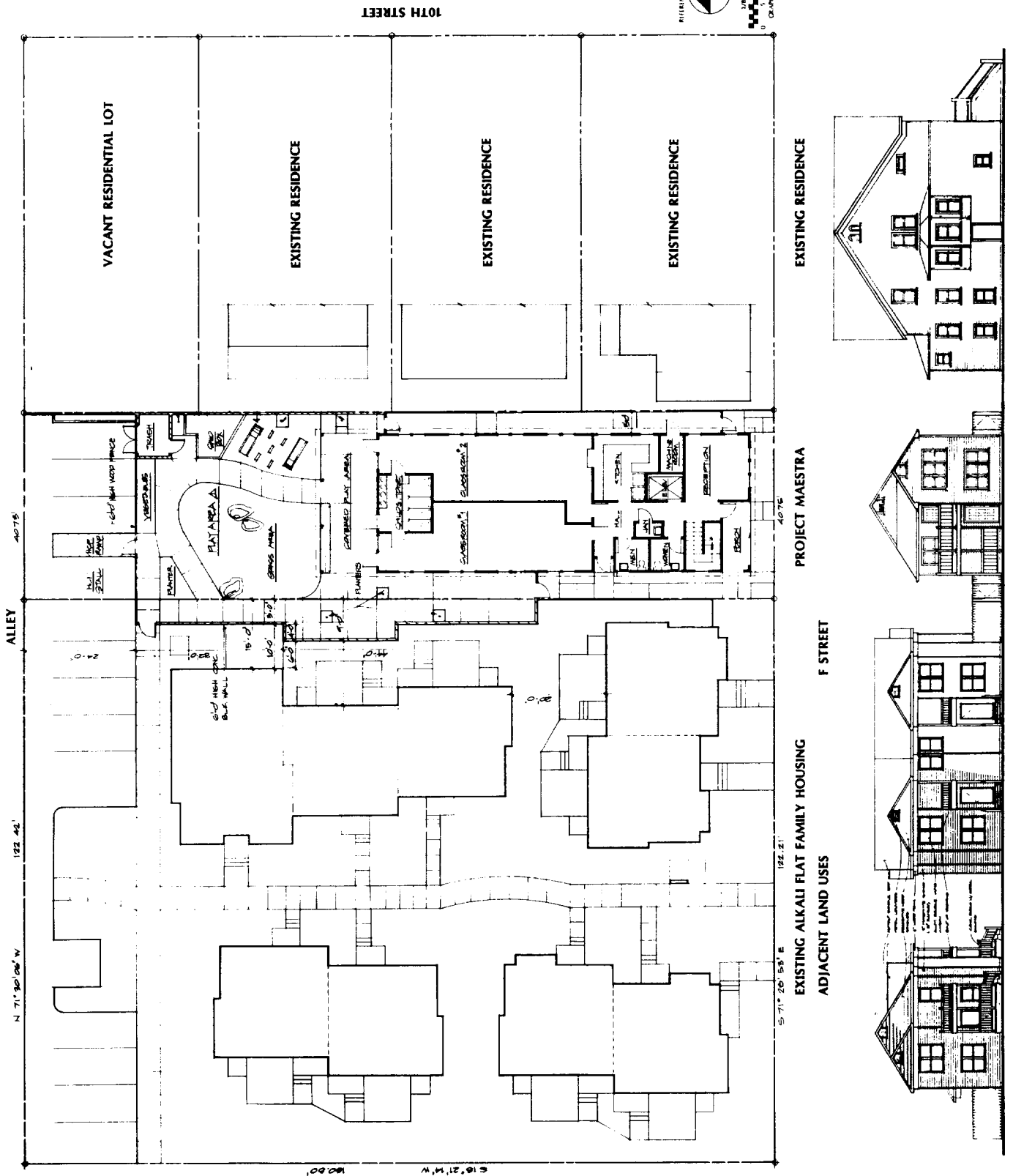
UNDER THE DIRECTION OF
SACRAMENTO HOUSING AND
DEVELOPMENT AGENCY

revision: 1
This drawing is not valid
and is not to be used for
construction unless signed
by the architect.
ARCHITECT

Drawn by: S. CARRELL
Checked by: D. UNGER
JOB NO.: 443
DATE: 5-2-83
DRAWING NO.:

2

Sheet title:
Sheet No.
of 3 sheets

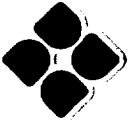


RESOLUTION No. 83-047

JUN 7 1983

(6)

33



DEAN F. UNGER, AIA, INC.
ARCHITECTURE AND ENVIRONMENTAL PLANNING

5-6-83

PROJECT MAESTRA
DAY CARE AND COMMUNITY CENTER

Architects Preliminary Probable Cost
of Construction Estimate

SUMMARY

Building		
\$50.25/SF x 3,590 SF =		\$ 180,376
Site Development		
\$1.50/SF x 7,264 SF =		10,896
Extra Site Costs		
Concrete block walls 210 LF x \$40/LF =		8,400
Elevator		30,000
<hr/>		
SUBTOTAL BUILDING RELATED		\$ 229,672
15% Contingency (Required by Agency)		34,451
<hr/>		
CONTRACT AMOUNT SUBTOTAL		\$ 264,123
Architecture		23,000
<hr/>		
TOTAL:		\$ 287,123

RESOLUTION No. 83-047

700 ALHAMBRA BOULEVARD ♦ SACRAMENTO ♦ CALIFORNIA 95816 916 ♦ 443 5747

JUN 7 1983