



APPROVED
BY THE CITY COUNCIL

OCT 12 1999

OFFICE OF THE
CITY CLERK

1.3

DEPARTMENT OF
PUBLIC WORKS

CITY OF SACRAMENTO
CALIFORNIA

DEVELOPMENT SERVICES
1231 I STREET
ROOM 200
SACRAMENTO, CA
95814
PH 916-264-7995
FAX 916-448-8450

TECHNICAL SERVICES DIVISION

September 21, 1999

City Council
Sacramento, California

Honorable Members In Session:

SUBJECT: APPROVAL OF FINAL MAP ENTITLED "MOONEY ESTATES" - (P95-080)

LOCATION/COUNCIL DISTRICT:

Pinedale Avenue East of Marysville Boulevard
Council District 2

RECOMMENDATION:

This report recommends that the attached resolution for the Final Map entitled "Mooney Estates" be approved.

CONTACT PERSON:

Faramarz Ansari, Associate Engineer, 264-7493

FOR COUNCIL MEETING OF:

October 12, 1999

SUMMARY:

On September 28, 1995, the City Planning Commission approved a Tentative Subdivision Map by adopting Resolution No. 1838. All conditions of the tentative map have been met by the subdivider, Equanimity Ltd., a California Limited Partnership, and Mooney Estates Partnership, a California General Partnership. The Final Map requires approval by the City Council.

COMMITTEE/COMMISSION ACTION:

None.

City Council
Final Map for Mooney Estates (P95-080)
September 21, 1999

BACKGROUND:

On September 28, 1995, the City Council approved a Tentative Subdivision Map by adopting Resolution No. 1838. Pursuant to Sacramento City Code, Chapter 40.07.711, and Government Code Section 66458, the City Council may, by resolution, approve final maps. The map presented conforms to all the requirements of the Government Code and Title 40 of the City Code, applicable at the time of conditional approval of the Tentative Subdivision Map. The Final Map is consistent with the North Sacramento Community Plan. All conditions in the staff subdivision report have been met and the Final Map is presented for approval.

FINANCIAL CONSIDERATIONS:

All subdivision costs are being paid by the subdivider, Equanimity Ltd., a California Limited Partnership, and Mooney Estates Partnership, a California General Partnership.

ENVIRONMENTAL CONSIDERATIONS:

On September 28, 1995, the City Planning Commission adopted Resolution No. 1838 ratifying the Negative Declaration and approving the mitigation monitoring plan for this project.

POLICY CONSIDERATIONS:

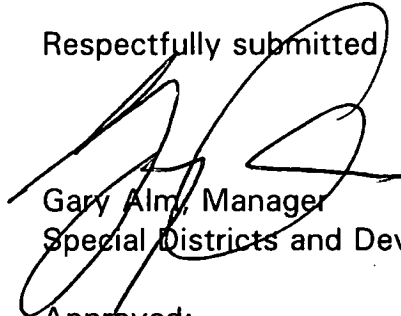
Pursuant to Sacramento City Code, Chapter 40.07.711, and Government Code Section 66458, the City Council may, by resolution, approve final maps. The map presented conforms to all the requirements of the Government Code and Title 40 of the City Code, applicable at the time of conditional approval of the Tentative Subdivision Map.

City Council
Final Map for Mooney Estates (P95-080)
September 21, 1999

ESBD CONSIDERATIONS:

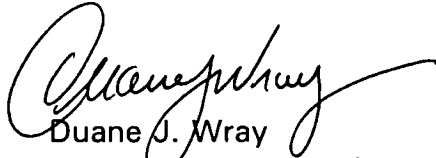
City Council adoption of the attached ordinance and the resolution is not affected by City policy related to the ESBD Program.

Respectfully submitted



Gary Alm, Manager
Special Districts and Development Services

Approved:



Duane J. Wray
Manager, Technical Services Division

RECOMMENDATION APPROVED:

Approved:



ROBERT P. THOMAS
City Manager



Michael Kashiwagi
Director of Public Works

JL:GA:dt
s:techsvs/devsvs/council/P95-080cctr
09.2199.1

APPROVED
BY THE CITY COUNCIL

OCT 12 1999

OFFICE OF THE
CITY CLERK

RESOLUTION NO. 99-570

ADOPTED BY THE SACRAMENTO CITY COUNCIL

ON DATE OF _____

APPROVING FINAL MAP ENTITLED "MOONEY ESTATES" (P95-080)

WHEREAS, THE COUNCIL OF THE CITY OF SACRAMENTO FINDS AND DETERMINES AS FOLLOWS:

- A. The Final Map entitled "Mooney Estates", located on Pinedale Avenue east of Marysville Boulevard with provisions for its design and improvement, is consistent with the North Sacramento Community Plan. See Exhibit "A" for project location.
- B. The Final Map is in substantial compliance with the previously approved tentative subdivision map.

NOW, THEREFORE, BE IT RESOLVED BY THE COUNCIL OF THE CITY OF SACRAMENTO AS FOLLOWS:

- 1. The Final Map is hereby approved.
- 2. All offers of dedication shown on said map are hereby accepted.

MAYOR

ATTEST:

CITY CLERK

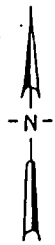
S:\techsvs/devsvs/council/P95-080ccltr

09.2199.1

FOR CITY CLERK USE ONLY

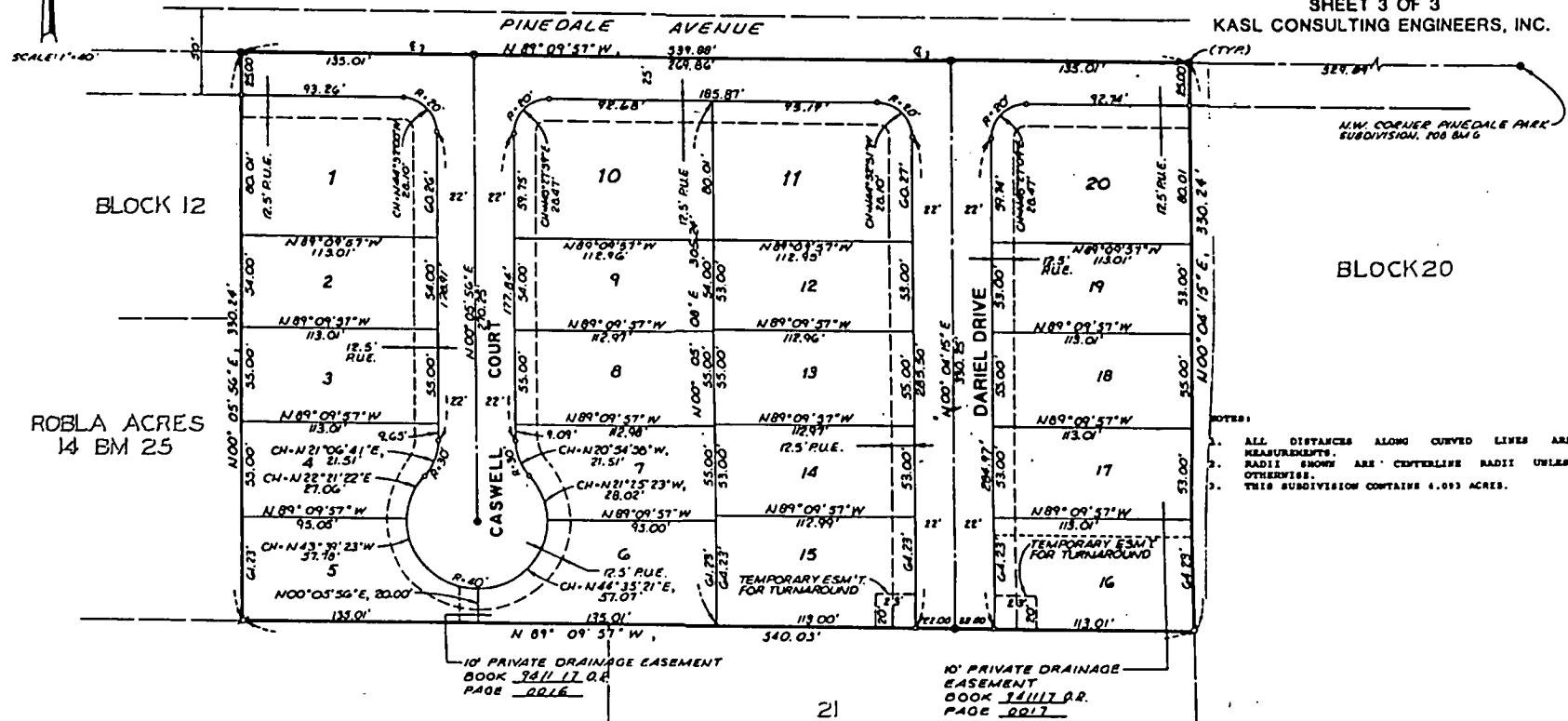
RESOLUTION NO.: _____

DATE ADOPTED: _____



- LEGEND**
- DIMENSION POINT
 - ⊙ FOUND PK NAIL PER ROB BM G
 - ⊙ SET 1" IRON PIPE W/PLASTIC STAMPED LS 9918
 - ⊙ SET 1/4" DIA. x 1 1/2" LONG PK NAIL PER CITY REQUIREMENTS
 - PLACE WELL MONUMENTS PER CITY STANDARDS

PLAT OF
MOONEY ESTATES
 A PORTION OF BLOCKS 21 & 22 PER
 "PLAT OF ROBLA ACRES"
 14 BM 25
 CITY OF SACRAMENTO, CALIFORNIA
 SEPTEMBER, 1999
 SHEET 3 OF 3
 KASL CONSULTING ENGINEERS, INC.



- NOTES:**
1. ALL DISTANCES ALONG CURVED LINES ARE CHORD MEASUREMENTS.
 2. RADII SHOWN ARE CENTERLINE RADII UNLESS NOTED OTHERWISE.
 3. THIS SUBDIVISION CONTAINS 4.093 ACRES.

BASES OF BEARINGS:
 THE BASIS OF BEARINGS FOR THIS SURVEY IS THE CENTERLINE OF PINEDALE AVENUE AS SHOWN ON THAT "PLAT OF PINEDALE PARK SUBDIVISION" RECORDED IN BOOK 208 OF MAPS, MAP NO. 4, RECORDS OF THE COUNTY OF SACRAMENTO, CALIFORNIA, SAID BEARING BEING NORTH 89°09'57" WEST AND BEING DETERMINED BY MONUMENTS FOUND THEREON.

FOR CITY CLERK USE ONLY
 RESOLUTION NO: _____
 DATE ADOPTED: _____

EXHIBIT A