



1.4

CITY OF SACRAMENTO
CALIFORNIA

DEPARTMENT OF
PUBLIC WORKS

TECHNICAL SERVICES DIVISION

DEVELOPMENT
SERVICES

1231 I STREET, STE 200
SACRAMENTO, CA
95814-2988
PH 916-264-7995
FAX 916-448-8450

APPROVED
BY THE CITY COUNCIL

NOV 24 1998

November 10, 1998

OFFICE OF THE
CITY CLERK

AG 98-204

City Council
Sacramento, California

Honorable Members In Session:

SUBJECT: APPROVAL OF FINAL MAP AND SUBDIVISION IMPROVEMENT AGREEMENT FOR
MEADOWVIEW VILLAGE UNIT NO. 7 - (P94-082)

LOCATION/COUNCIL DISTRICT:

24th Street and Laramore Way
Council District 8

RECOMMENDATION:

This report recommends the City Council approve the attached resolution for the Final Map and Subdivision Improvement Agreement for Meadowview Village Unit No. 7.

CONTACT PERSON:

Jon Blank, Associate Engineer, 264-7493

Gary Alm, Development Services Manager, 264-7942

FOR COUNCIL MEETING OF:

November 24, 1998

SUMMARY:

On February 8, 1996, the City Planning Commission approved a Tentative Subdivision Map by adopting Resolution No. 1904. All conditions of the subdivision's tentative map have been met by the subdivider, New Faze Development. The subdivider wishes to file the Final Map prior to, completing the required subdivision improvements. The deferral of these improvements requires the subdivider to enter into a subdivision improvement agreement with the

Department of

PUBLICWORKS
CITY OF
SACRAMENTO

Handwritten scribbles and faint markings.

Handwritten scribbles and faint markings.



City Council
Final Map (P94-082)
October 29, 1998

City wherein the subdivider will complete the improvements at a later date. The Final Map and the Subdivision Improvement Agreement requires approval by the City Council.

COMMITTEE/COMMISSION ACTION:

None.

BACKGROUND INFORMATION:

On February 8, 1996, the City Planning Commission approved a Tentative Subdivision Map by adopting Resolution No. 1904.

Pursuant to Sacramento City Code, Chapter 40.07.711, and Government Code Section 66458, the City Council may, by resolution, approve final maps. The map presented conforms to all the requirements of the Government Code and Title 40 of the City Code, applicable at the time of conditional approval of the Tentative Map.

The Final Map is consistent with the South Sacramento Community Plan. All conditions in the staff subdivision report have been met, the deferred improvement work has been secured through a subdivision improvement agreement, and the Final Map is presented for approval.

FINANCIAL CONSIDERATIONS:

All subdivision costs are being paid by the subdivider, New Faze Development.

ENVIRONMENTAL CONSIDERATIONS:

On February 8, 1996, the City Planning Commission adopted Resolution No. 1904 ratifying the Negative Declaration and approving the mitigation monitoring plan for this project.

POLICY CONSIDERATIONS:


Pursuant to Sacramento City Code, Chapter 40.07.711, and Government Code Section 66458, the City Council may, by resolution, approve final maps. The map presented conforms to all the requirements of the Government Code and Title 40 of the City Code, applicable at the time of conditional approval of the Tentative Map.

City Council
Final Map (P94-082)
October 29, 1998

MBE/WBE:

None, since no goods or services are being procured with this action.

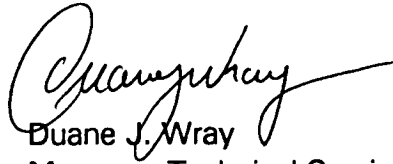
Respectfully submitted,



for

Gary Alm, Manager
Development Services & Special Districts

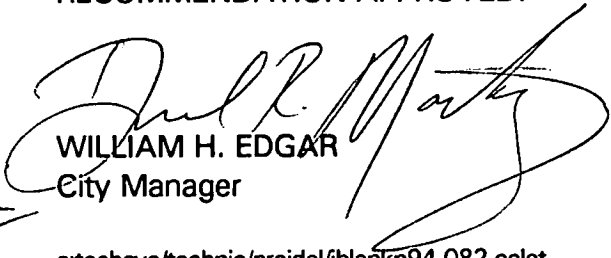
Approved:



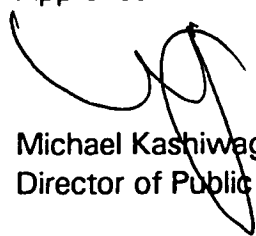
Duane J. Wray
Manager, Technical Services Division

RECOMMENDATION APPROVED:

Approved:



WILLIAM H. EDGAR
City Manager



Michael Kashiwagi
Director of Public Works

s:techsvc/technic/projdel/jblankp94-082.ccllet
10.2098.1

Attachment

Handwritten text, possibly a signature or name.

Handwritten mark or symbol.

Faint handwritten text.

Faint handwritten text.

APPROVED
BY THE CITY COUNCIL

NOV 24 1998

OFFICE OF THE
CITY CLERK

RESOLUTION NO. 98-584

ADOPTED BY THE SACRAMENTO CITY COUNCIL

ON DATE OF _____

APPROVING FINAL MAP ENTITLED "MEADOWVIEW VILLAGE UNIT NO. 7" AND SUBDIVISION IMPROVEMENT AGREEMENT (P94-082)

WHEREAS, THE CITY COUNCIL OF THE CITY OF SACRAMENTO FINDS AND DETERMINES AS FOLLOWS:

- A. The Final Map for Meadowview Village Unit No. 7, located at 24th Street and Laramore Way, with provisions for its design and improvement, is consistent with the South Sacramento Community Plan. See Exhibit 'A' for project location.
- B. The Final Map is in substantial compliance with the previously approved tentative map.

NOW, THEREFORE, BE IT RESOLVED BY THE COUNCIL OF THE CITY OF SACRAMENTO AS FOLLOWS:

- 1. The Final Map for this project is hereby approved subject to the execution by all parties of the Subdivision Improvement Agreement for that subdivision.
- 2. All offers of dedication shown on said map are hereby accepted subject to the improvement thereof required by the Subdivision Improvement Agreement.
- 3. The City Manager and City Clerk are authorized and directed to execute on behalf of the City of Sacramento that certain Subdivision Improvement Agreement between the City and New Faze Development to provide for the subdivision improvements required by the Subdivision Map Act and Title 40 (Subdivision Regulations) of the Sacramento City Code.

FOR CITY CLERK USE ONLY

RESOLUTION NO.: _____

DATE ADOPTED: _____

4. The City Clerk is authorized and directed to record the above-mentioned agreement in the official records of Sacramento County.

MAYOR

ATTEST:

CITY CLERK

S:techsvc/technic/projdel/jblankP94-082.ccllet
10.2998.1

FOR CITY CLERK USE ONLY

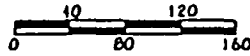
RESOLUTION NO.: _____

DATE ADOPTED: _____

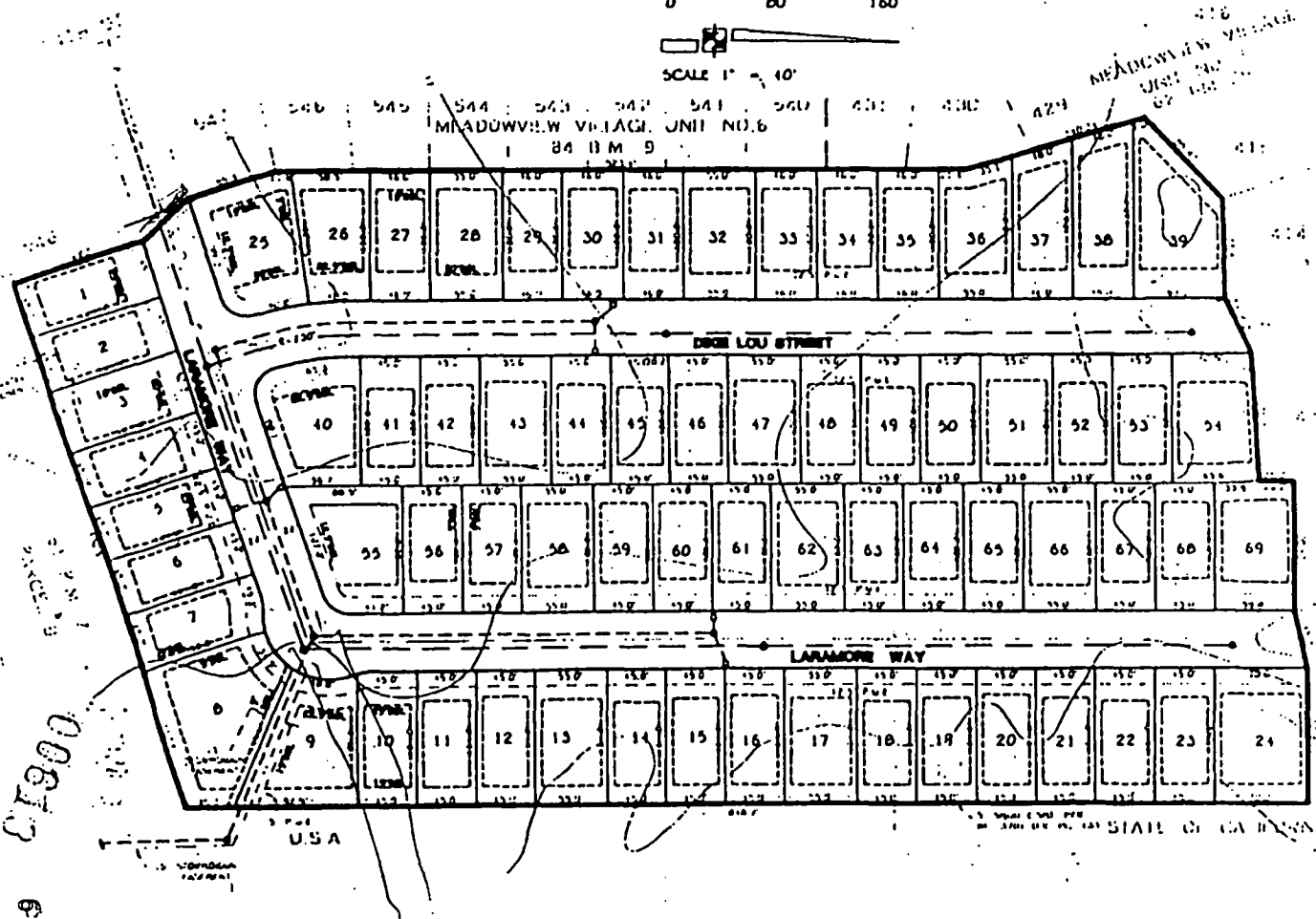
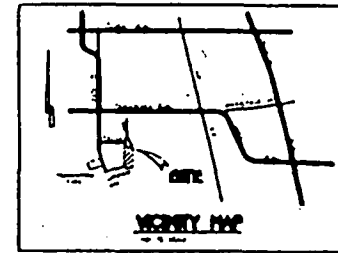
TENTATIVE SUBDIVISION MAP MEADOWVIEW VILLAGE UNIT NO. 7

BUILDING SETBACK LINES (ASL)

1. FROM B.M. 8 27, 28, 29, 30, 31, 32, 33, 34, 35, 36, 37, 38, 39, 40, 41, 42, 43, 44, 45, 46, 47, 48, 49, 50, 51, 52, 53, 54, 55, 56, 57, 58, 59, 60, 61, 62, 63, 64, 65, 66, 67, 68, 69, 70, 71, 72, 73, 74, 75, 76, 77, 78, 79, 80, 81, 82, 83, 84, 85, 86, 87, 88, 89, 90, 91, 92, 93, 94, 95, 96, 97, 98, 99, 100.
2. FROM B.M. 8 17, 18, 19, 20, 21, 22, 23, 24, 25, 26, 27, 28, 29, 30, 31, 32, 33, 34, 35, 36, 37, 38, 39, 40, 41, 42, 43, 44, 45, 46, 47, 48, 49, 50, 51, 52, 53, 54, 55, 56, 57, 58, 59, 60, 61, 62, 63, 64, 65, 66, 67, 68, 69, 70, 71, 72, 73, 74, 75, 76, 77, 78, 79, 80, 81, 82, 83, 84, 85, 86, 87, 88, 89, 90, 91, 92, 93, 94, 95, 96, 97, 98, 99, 100.
3. FROM B.M. 8 17, 18, 19, 20, 21, 22, 23, 24, 25, 26, 27, 28, 29, 30, 31, 32, 33, 34, 35, 36, 37, 38, 39, 40, 41, 42, 43, 44, 45, 46, 47, 48, 49, 50, 51, 52, 53, 54, 55, 56, 57, 58, 59, 60, 61, 62, 63, 64, 65, 66, 67, 68, 69, 70, 71, 72, 73, 74, 75, 76, 77, 78, 79, 80, 81, 82, 83, 84, 85, 86, 87, 88, 89, 90, 91, 92, 93, 94, 95, 96, 97, 98, 99, 100.



SCALE 1" = 40'



OWNER / DEVELOPER

1990, 1991, 1992, 1993, 1994, 1995, 1996, 1997, 1998, 1999, 2000, 2001, 2002, 2003, 2004, 2005, 2006, 2007, 2008, 2009, 2010, 2011, 2012, 2013, 2014, 2015, 2016, 2017, 2018, 2019, 2020, 2021, 2022, 2023, 2024, 2025, 2026, 2027, 2028, 2029, 2030, 2031, 2032, 2033, 2034, 2035, 2036, 2037, 2038, 2039, 2040, 2041, 2042, 2043, 2044, 2045, 2046, 2047, 2048, 2049, 2050, 2051, 2052, 2053, 2054, 2055, 2056, 2057, 2058, 2059, 2060, 2061, 2062, 2063, 2064, 2065, 2066, 2067, 2068, 2069, 2070, 2071, 2072, 2073, 2074, 2075, 2076, 2077, 2078, 2079, 2080, 2081, 2082, 2083, 2084, 2085, 2086, 2087, 2088, 2089, 2090, 2091, 2092, 2093, 2094, 2095, 2096, 2097, 2098, 2099, 2100.

APPLICANT

1990, 1991, 1992, 1993, 1994, 1995, 1996, 1997, 1998, 1999, 2000, 2001, 2002, 2003, 2004, 2005, 2006, 2007, 2008, 2009, 2010, 2011, 2012, 2013, 2014, 2015, 2016, 2017, 2018, 2019, 2020, 2021, 2022, 2023, 2024, 2025, 2026, 2027, 2028, 2029, 2030, 2031, 2032, 2033, 2034, 2035, 2036, 2037, 2038, 2039, 2040, 2041, 2042, 2043, 2044, 2045, 2046, 2047, 2048, 2049, 2050, 2051, 2052, 2053, 2054, 2055, 2056, 2057, 2058, 2059, 2060, 2061, 2062, 2063, 2064, 2065, 2066, 2067, 2068, 2069, 2070, 2071, 2072, 2073, 2074, 2075, 2076, 2077, 2078, 2079, 2080, 2081, 2082, 2083, 2084, 2085, 2086, 2087, 2088, 2089, 2090, 2091, 2092, 2093, 2094, 2095, 2096, 2097, 2098, 2099, 2100.

ADDRESS/ PARCEL NO.

1990, 1991, 1992, 1993, 1994, 1995, 1996, 1997, 1998, 1999, 2000, 2001, 2002, 2003, 2004, 2005, 2006, 2007, 2008, 2009, 2010, 2011, 2012, 2013, 2014, 2015, 2016, 2017, 2018, 2019, 2020, 2021, 2022, 2023, 2024, 2025, 2026, 2027, 2028, 2029, 2030, 2031, 2032, 2033, 2034, 2035, 2036, 2037, 2038, 2039, 2040, 2041, 2042, 2043, 2044, 2045, 2046, 2047, 2048, 2049, 2050, 2051, 2052, 2053, 2054, 2055, 2056, 2057, 2058, 2059, 2060, 2061, 2062, 2063, 2064, 2065, 2066, 2067, 2068, 2069, 2070, 2071, 2072, 2073, 2074, 2075, 2076, 2077, 2078, 2079, 2080, 2081, 2082, 2083, 2084, 2085, 2086, 2087, 2088, 2089, 2090, 2091, 2092, 2093, 2094, 2095, 2096, 2097, 2098, 2099, 2100.

AREA

EXISTING LAND USE

PROPOSED LAND USE

EXISTING/PROPOSED ZONING

NUMBER OF LOTS

SEWER

WATER

SEWERAGE &

FLOOD CONTROL

SCHOOLS

FIRE PROTECTION

POLICE PROTECTION

ELECTRICITY

GIS

TELEPHONE

DATE

1990, 1991, 1992, 1993, 1994, 1995, 1996, 1997, 1998, 1999, 2000, 2001, 2002, 2003, 2004, 2005, 2006, 2007, 2008, 2009, 2010, 2011, 2012, 2013, 2014, 2015, 2016, 2017, 2018, 2019, 2020, 2021, 2022, 2023, 2024, 2025, 2026, 2027, 2028, 2029, 2030, 2031, 2032, 2033, 2034, 2035, 2036, 2037, 2038, 2039, 2040, 2041, 2042, 2043, 2044, 2045, 2046, 2047, 2048, 2049, 2050, 2051, 2052, 2053, 2054, 2055, 2056, 2057, 2058, 2059, 2060, 2061, 2062, 2063, 2064, 2065, 2066, 2067, 2068, 2069, 2070, 2071, 2072, 2073, 2074, 2075, 2076, 2077, 2078, 2079, 2080, 2081, 2082, 2083, 2084, 2085, 2086, 2087, 2088, 2089, 2090, 2091, 2092, 2093, 2094, 2095, 2096, 2097, 2098, 2099, 2100.

P94-082

EXHIBIT A

00873 8