

RESOLUTION NO. 2005-076

ADOPTED BY THE SACRAMENTO CITY COUNCIL

ON DATE OF FEB 15 2005

RESOLUTION AMENDING THE SOUTH NATOMAS COMMUNITY PLAN LAND USE MAP TO REDESIGNATE 4.92± NET ACRES FROM COMMUNITY COMMERCIAL TO 4.92± NET ACRES OF MEDIUM HIGH DENSITY RESIDENTIAL WITHIN THE NATOMAS EASTSIDE PLANNED UNIT DEVELOPMENT, LOCATED IN SOUTH NATOMAS, SOUTH SIDE OF WEST EL CAMINO AVENUE AND WEST OF GATEWAY OAKS DRIVE, SACRAMENTO, CA.

(APN: 225-1010-006, -007, and -019)
(P04-129)

WHEREAS, the Planning Commission conducted a public hearing on January 13, 2005, and the City Council conducted a public hearing on February 15, 2005 concerning the above plan amendment and based on documentary and oral evidence submitted at the public hearing, the Council hereby finds:

1. The proposed land use amendment is compatible with the surrounding land uses;
2. The subject site is suitable for multi-family residential; and
3. The proposal is consistent with the policies of the South Natomas Community Plan and the General Plan.

BE IT RESOLVED BY THE CITY COUNCIL OF THE CITY OF SACRAMENTO THAT:

The property as described on the attached Exhibit 1 in the City of Sacramento is hereby re-designated on the South Natomas Community Plan land use map from 4.92± net acres of Community Commercial to 4.92± net acres of Medium High Density Residential within the Natomas Eastside Planned Unit Development. (APN: 225-1010-006, -007, and -019)

FOR CITY CLERK USE ONLY

RESOLUTION NO.: 2005-076
DATE ADOPTED: FEB 15 2005

ATTEST:

SHIRLEY CONCOLINO

CITY CLERK

P04-129

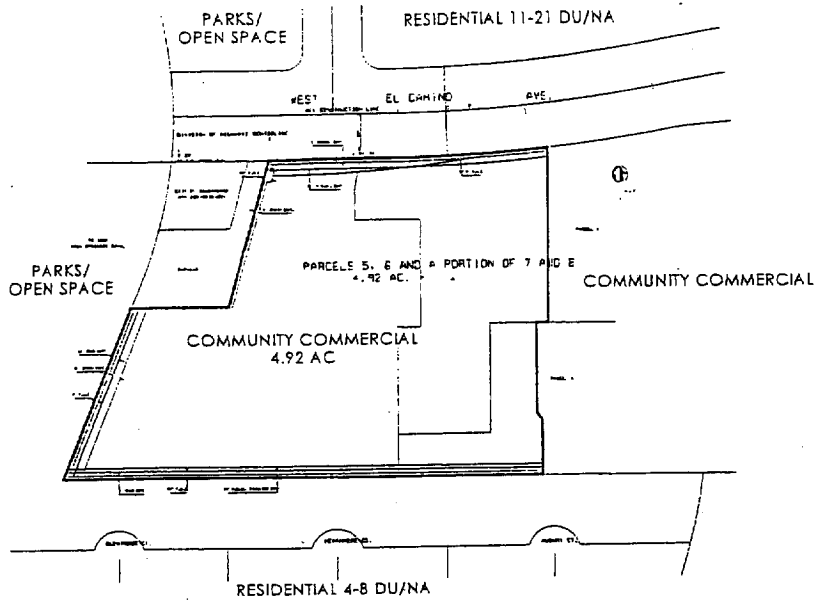
HEATHER FARGO

FOR CITY CLERK USE ONLY

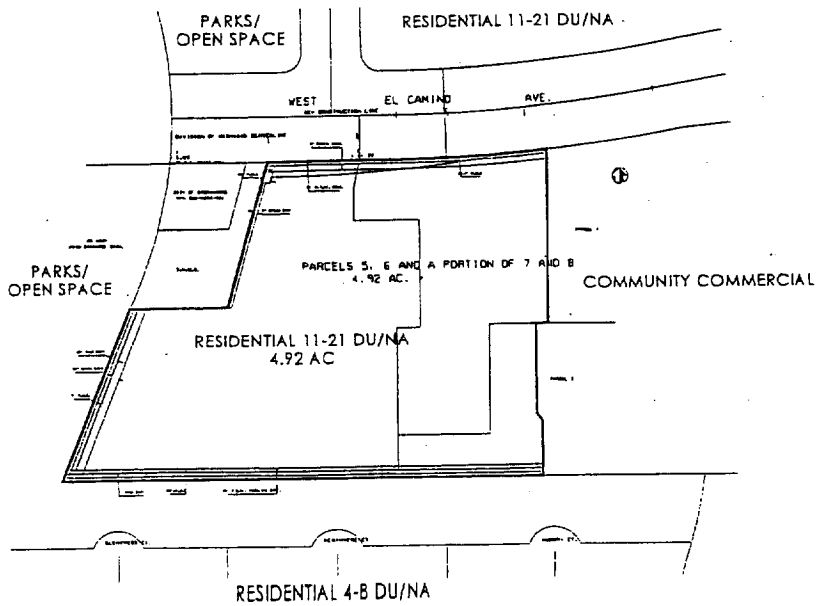
RESOLUTION NO.: 2005-076

DATE ADOPTED: FEB 15 2005

EXHIBIT 1 - Community Plan Amendment



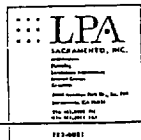
EXISTING COMMUNITY PLAN DESIGNATION : COMMUNITY COMMERCIAL



PROPOSED COMMUNITY PLAN DESIGNATION : RESIDENTIAL 11-21 DU/NA

COMMUNITY PLAN EXHIBIT

WEST EL CAMINO RESIDENTIAL
SACRAMENTO, CALIFORNIA



4.24.04

113-0001

FOR CITY CLERK USE ONLY

RESOLUTION NO.: 2005-076

DATE ADOPTED: FEB 15 2005