



7

**DEPARTMENT OF PARKS  
AND COMMUNITY SERVICES**

**CITY OF SACRAMENTO  
CALIFORNIA**

1231 I STREET  
SUITE 400  
SACRAMENTO, CA  
95814-2977

ROBERT P. THOMAS  
DIRECTOR

G. ERLING LINGGI  
ASSISTANT DIRECTOR

WALTER S. UEDA  
DEPUTY DIRECTOR

916-449-5200  
FAX 916-449-8584

DIVISIONS:  
GOLF  
CROCKER ART MUSEUM  
HISTORY AND SCIENCE  
METROPOLITAN ARTS  
SACRAMENTO ZOO  
PARKS AND RECREATION

- NORTH
- SOUTH
- CITY-WIDE

May 7, 1991

Budget and Finance Committee  
Transportation and Community Development Committee  
Sacramento, California

Honorable Members in Session:

**SUBJECT: YOUTH SPORTS FIELDS CITY-WIDE STUDY**

**SUMMARY**

This report provides information on the development of a comprehensive, city-wide study of youth sports field facilities, which will include a current inventory of facilities, projected future needs and a financing and development plan for providing new facilities. In addition, this report recommends that the Committee direct staff to amend the 1991-96 proposed CIP to include funding for the study.

**BACKGROUND INFORMATION**

As the population of the City of Sacramento continues to grow, the lack of adequate facilities for youth sports teams has become a city-wide concern. Youth sports activities include little league, girls softball, youth football and soccer. These organized leagues utilize a wide range of sports fields including private facilities, leased city property, city parks, and school sites.

The Department of Parks and Community Services' staff has had continuing dialogue with youth sport leagues, neighborhood residents, and school administrators on a case by case basis as individual problems have developed. It has become increasingly evident that current fields are inadequate and that a city-wide policy is necessary to adequately plan for current and future youth sports field demands.

A major problem associated with youth sports activities in residential parks has been the potential for noise, traffic, and parking impacts adjacent to residential neighborhoods. The Department's park master planning process includes neighborhood participation in the design of new parks through a series of park master plan community meetings.

The park master plan meetings are typically heavily attended by neighbors objecting to the addition of sports fields. Consequently, most of our new parks do not have provisions for sports fields. The Department has faced planning meetings where youth sports enthusiasts were pitted against neighborhood residents in a voting war.

There are several strategies the Department is considering to deal with this situation, including:

1. Plan and develop new parks which include some of these facilities prior to the development of the neighborhood.
2. Develop park planning policies which mandate inclusion of sports fields in future park plans by planning area. The data developed by this proposed study may be used in developing such a policy.
3. Plan a regional youth sports complex concentrating these activities into a large area away from incompatible neighborhoods. Current cost estimates to develop a youth sports complex is approximately \$4-5 million. Funding for this activity is not currently available or included in the five-year CIP.
4. Consider the equity issue regarding field development, maintenance and usage.

In order to analyze each strategy and develop a plan which addresses these issues, the Department of Parks and Community Services is recommending the development of a comprehensive city-wide study of youth sports facility needs. The study would include the formation of three (3) regional task forces with representation from all youth sports leagues including baseball, soccer, softball and football leagues, neighborhood residents, and members of the Department's Park and Recreation Citizens Advisory Committee. Each regional task force would select one league member and one neighborhood member to serve on the executive policy committee. In addition, one member of the Park and Recreation Citizens Advisory Committee will serve At-Large and will also serve on the executive committee. Exhibit A shows the geographic boundaries of the three task forces and Exhibit B shows membership by league on each task force.

The Department is recommending that a consultant be hired to develop the study and manage the project including the public process. The consultant would act as the project manager, organize the task force meetings, inventory youth sports facilities city wide, develop policy recommendations with input from the Task Force and staff, project current and future needs, address use/maintenance inequities, provide financial analysis and expertise, and prepare the final report and recommendations. An organization chart is attached as Exhibit C.

It is anticipated that a consultant Request for Proposal could be released in mid-May and that a project manager could be on board on July 1, 1991. During the period from May through July, staff will be contacting all youth sports leagues in the City and asking for representatives to serve on the task force. In addition, staff will be soliciting neighborhood/citizen representatives for each task force district.

2

Staff is currently conducting an inventory of all city-owned youth sports fields and their condition. The consultant will be responsible for working with staff on the inventory and for developing a complete inventory of private sites and school sites currently used for youth sports city wide.

A series of three task force meetings, as well as several executive committee meetings, is anticipated. A survey/questionnaire will be developed to be completed by each league which will organize data on existing field usage, current conditions and needs, and projected future needs. It is anticipated that a final policy report and recommendations will be presented to the City Council in March 1992. A complete time line for the project study is attached as Exhibit D.

The final study will consist of the following components:

1. Complete inventory of city, school and private youth sports fields;
2. Future demand projection for fields;
3. Park planning policy recommendations pertaining to sports fields;
4. Utilization of school sites;
5. Equity issues (field maintenance, lease agreements, infrastructure);
6. Youth Sports Complex;
7. Financial options and recommendations.

#### FINANCIAL DATA

This report recommends that the Youth Sports Field Study be financed through the Quimby Interest Fund. This is in keeping with Quimby Ordinance Guidelines as youth sports fields is a city-wide recreational concern. Staff estimates that \$50,000 transferred from the Quimby Interest Fund in FY 1991-92 will cover the costs of hiring a consultant/project manager, a recreation specialist to complete the inventory, and related graphics and design costs. Adequate funds are available in this fund.

Budget for the study is as follows:

\$ 30,000	- Project manager/park planning consultant Approximately 600 hours at \$50.00 per hour.
9,000	- Recreation Specialist to inventory school and park fields and their condition. Approximately 300 hours at \$30.00 per hour.
<u>11,000</u>	- Related graphics, field maps, design
\$ 50,000	TOTAL

POLICY CONSIDERATIONS

This study is consistent with policies in the 1989 Master Plan Update for Parks and Recreation which identifies the need for youth sports facilities as a City-wide priority.

MBE/WBE EFFORTS

Every effort will be made to meet MBE/WBE goals in selecting a consultant for this project.

RECOMMENDATION

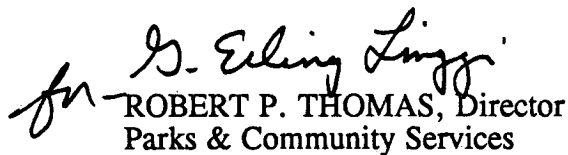
This report is for information only. Staff will amend the proposed 1991-96 CIP to include funding for a study on Youth Sports Facilities.

Respectfully submitted,




KEN HARRIS, Manager  
Parks & Recreation City-wide

APPROVED:



ROBERT P. THOMAS, Director  
Parks & Community Services



JACK R. CRIST  
Deputy City Manager

KH/RPT:pmg

Attachments: Exhibits A-D

All Districts

Contact Person: Ken Harris, Manager, Parks & Recreation City Wide  
449-5384

*k/council c/thomas rtrsport*

4



REGIONAL TASK FORCES

YOUTH SPORTS LEAGUES

LEAGUE REPRESENTATIVES

NEIGHBORHOOD REPRESENTATIVES

**REGION 1 - North, Central North/East**

**Land Park Little League  
Oakridge Little League  
Old Sacramento Little League  
Pacific Little League  
College Glen Little League  
River Park Youth Baseball  
East Sacramento Soccer  
Land Park Soccer  
River Park Soccer  
East Sacramento Babe Ruth Baseball  
Natomas Pony Baseball  
Natomas Northern California Girls Softball  
Pop Warner Football**

**Land Park  
River Park  
Natomas  
College Greens**

**REGION 2 - East, South East**

**Florin Little League  
Lemon Hill Little League  
Oak Park Little League  
  
Tahoe/Tallac Little League  
Police Athletic League Girls Softball  
Police Athletic League Soccer  
South Florin Soccer  
Tahoe Park Soccer  
Sacramento North California Girls Softball  
British American Youth Soccer  
California Youth Football**

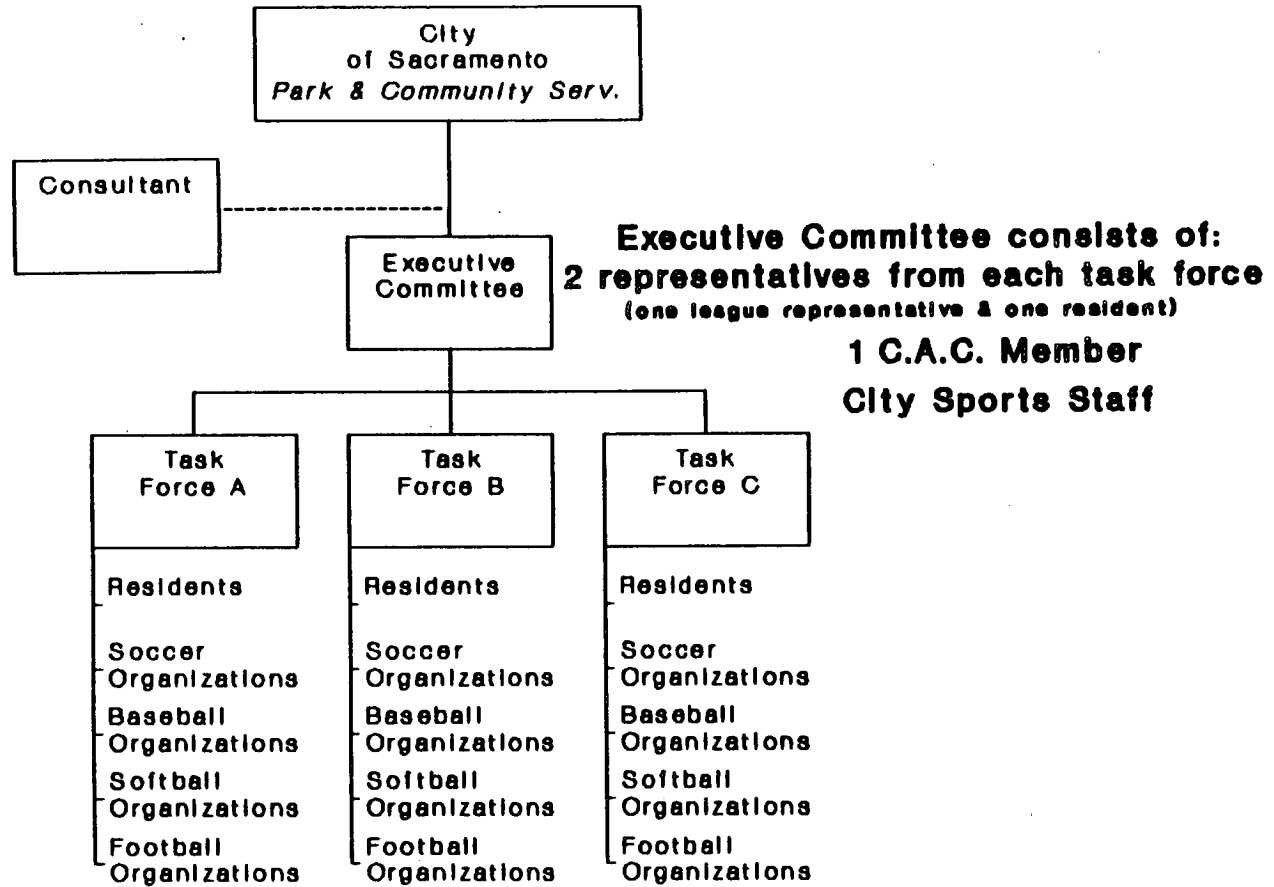
**Oak Park  
Tahoe Park  
Florin Reservoir  
Sim Park**

**REGION 3 - South**

**Airport Little League  
Parkway Little League  
Pocket Little League  
Cosumnes River Little League  
Willow Rancho Little League  
Fruitridge Soccer  
Greenhaven Soccer  
Parkway Soccer  
Valley Hi Soccer  
Pocket Northern California Girls Softball**

**Pocket  
Greenhaven/Seymour Park  
Valley Hi Park  
Executive Airport**

# Athletic Field Usage Task Force



YOUTH SPORTS FIELD CITY-WIDE STUDYTIME LINE

<u>DATE</u>	<u>ACTIVITY</u>
May 14, 1991	Council approval of project.
May 30, 1991	Release Request for Proposal for Project Consultant.
May thru July 1991	Form Task Force Youth Sports League representatives Neighborhood representatives Citizens Advisory Committee members  Staff complete preliminary inventory of City sites.
July 30, 1991	Consultant selected/contract to City Council for approval.  Recreation Specialist begins inventory of school/private/church sites.
July - September	Consultant surveys other communities with regard to youth sports field policies.
Mid - September	No. 1 task force meeting in three district areas: orientation, parameters of study, questionnaires distributed.
Mid - October	No. 2 task force meeting; task force brings back league/neighborhood information to consultant; select executive committee members.
October thru December	Consultant develops policies, objectives, financial plan; meetings with executive committee as needed. Consultant develops draft study.
January, 1992	Consultant/staff review draft report with task force.
February, 1992	Consultant revises report as needed and prepares final study.
March, 1992	Final report presented to City Council.