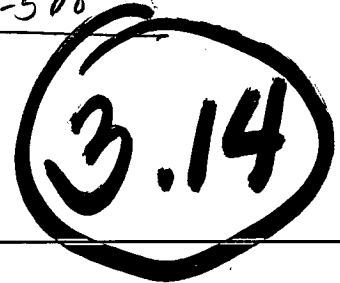


2003-528



DEPARTMENT OF
PARKS AND RECREATION

**CITY OF SACRAMENTO
CALIFORNIA**

1231 I STREET, #400
SACRAMENTO, CA
95814-2997

PARK PLANNING, DESIGN
AND DEVELOPMENT

(916) 264-5200
FAX 264-8329

July 10, 2003

City Council
Sacramento, California

Honorable Members in Session:

**SUBJECT: APPROVE THE TRANSFER OF \$100,000 FROM THE COUNCIL
DISTRICT 4 VOLUNTEER FUNDS (CIP PN: LM16) TO THE SOUTHSIDE
ACCESSIBLE PLAYGROUND PROJECT (CIP PN: LS52).**

LOCATION AND COUNCIL DISTRICT: 2115 6th Street, Council District 4

RECOMMENDATION:

Staff recommends that the City Council, by resolution (page 4), approve the transfer of \$100,000 from the Council District 4 Volunteer Funds (CIP PN: LM16) to the Southside Accessible Playground Project (CIP PN: LS52)

CONTACT PERSON: JANET BAKER, PARK DEVELOPMENT MANAGER, 264-8234

FOR COUNCIL MEETING OF: July 29, 2003

SUMMARY:

Southside Park is an existing 19.9 acre community park located at 2115 - 6th Street in Downtown Sacramento. The proposed exceptionally accessible playground has been designed with 70 percent accessibility that exceeds the current baseline Americans with Disabilities Act (ADA) standards. The proposed accessible playground would be for the enjoyment of all children with disabilities, able-bodied children, their families, and caretakers. Staff recommends approval of a transfer of funds to go towards the project costs of Phases 1&2 for the Southside Park Accessible Playground.

COMMITTEE/COMMISSION ACTION:

The Citizen's Advisory Committee (CAC) for Parks and Recreation approved the design elements



Optimize the Experience of Living!

and conceptual design of the Southside Park Accessible Playground at its April 3, 2003 meeting.

In addition, the CAC approved the master plan for the playground at its June 5, 2003 meeting. Also, the ADA Commission reviewed the conceptual plan on February 23, 2003 and reviewed the master plan at their June 12, 2003 meeting.

BACKGROUND INFORMATION:

The city council on July 19, 2003 approved the master plan for a playground located at Southside Park that has been designed with 70 percent accessibility that exceeds the current baseline ADA standards.

Two community workshops were held where the public was invited to participate and provide input into the playground master plan process. The community approved the proposed Southside Park Accessible Playground master plan on May 15, 2003.

The proposed exceptionally accessible playground at Southside Park will replace the existing playground that is due for replacement.

With additional funding, the second phase of the accessible playground development will include additional secondary walkways, a sand play area with various sand play equipment, tot swings, swings with therapeutic seats, a sheltered group picnic area, two entry art sculptures, and additional landscaping.

Future phase includes replacement of the existing restroom with a larger fully accessible family restroom, heating of the existing pool, accessible pool chair lift and group shade structure.

Staff will return to Council in October of 2003 for approval of the award of the construction contract and approval of the construction documents.

FINANCIAL CONSIDERATIONS:

This project is being funded jointly by the City of Sacramento and Sutter Health Sacramento Sierra Region. The City portion includes \$70,000 from the Landscape and Lighting fund, \$100,000 from the Sacramento Housing and Redevelopment Agency CDBG funds, and \$200,000 from Proposition 12 (pending Council approval). The Sutter Health Sacramento Sierra Region will be contributing \$300,000 to the project and the remaining \$80,000 will be gathered through fundraising efforts led by Sutter Health which are already underway. The entire project cost is \$1,224,676. Phase 1 development cost is \$700,000. Additional funding of approximately \$524,676 is required for Phase 2 of the project. This \$100,000 transfer of funds secures funding of Phase 1 and any balance of funds will be used for elements in Phase 2.

ENVIRONMENTAL CONSIDERATIONS:

The Planning and Building Department, Environmental Planning Services has determined that approval of the Southside Park Accessible Playground design is exempt from the requirements of the California Environmental Quality Act (CEQA), pursuant to Section 15061(b)(3) of the CEQA Guidelines. Section 15061(b)(3) consists of an activity covered by the general rule that CEQA applies only to projects, which have the potential for causing a significant effect on the environment. Where it can be seen with certainty that there is no possibility that the activity in question may have a significant effect on the environment, the activity is not subject to CEQA. However, the project will require future discretionary approval in order to proceed with actual construction/development of the proposed project. At the time of final action, appropriate CEQA environmental review documentation will also be completed.

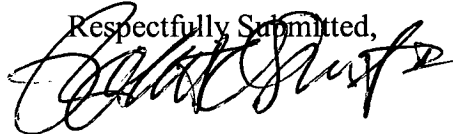
POLICY CONSIDERATIONS:

The development of this facility is consistent with the City Council's goals to preserve and expand arts and culture, open space, the urban forest, parks and recreational opportunities, and establish and strengthen community and regional partnerships to enhance the quality of life.

ESBD CONSIDERATIONS:

The selection of Landscape Architect consultants and contractors for this project will follow City established guidelines for inclusion of ESBD firm.

Respectfully Submitted,



ROBERT G. OVERSTREET,
Director of Parks and Recreation

Recommendation Approved,

ROBERT P. THOMAS
City Manager

Resolution - Page 4

Exhibit A- Southside Park Accessible Playground Master Plan - Page 5

Exhibit B - Area Map - Page 6

APPROVED
JUL 29 2003
OFFICE OF THE
CITY CLERK

RESOLUTION NO. 2003-528

ADOPTED BY THE SACRAMENTO CITY COUNCIL

ON DATE OF: 7/29/03

**RESOLUTION TO APPROVE
THE TRANSFER OF \$100,000 FROM THE COUNCIL DISTRICT 4 VOLUNTEER
FUNDS (CIP PN: LM 16) TO THE SOUTHSIDE ACCESSIBLE PLAYGROUND
PROJECT (CIP PN: LS52)**

The City Council of the City of Sacramento hereby approves the transfer of funds from District 4 Volunteer Funds (CIP PN: LM16) to the Southside Accessible Playground Project (CIP PN: LS52).

MAYOR

ATTEST:

CITY CLERK

FOR CITY CLERK USE ONLY

Resolution No.: _____

Date Adopted: _____

MASTER PLAN

June 26, 2003

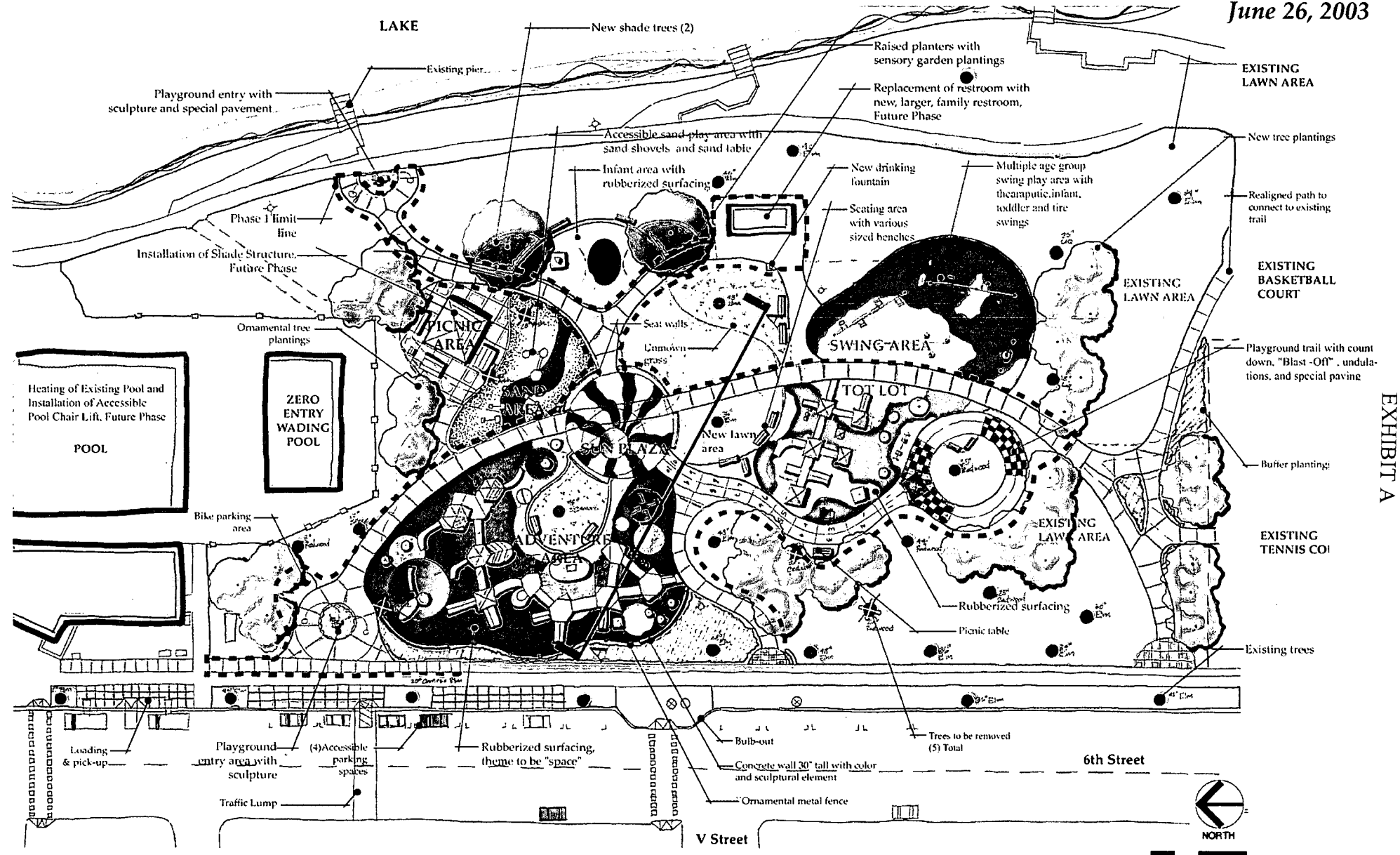


EXHIBIT A

5



City of Sacramento Department of Parks and Recreation Southside Park

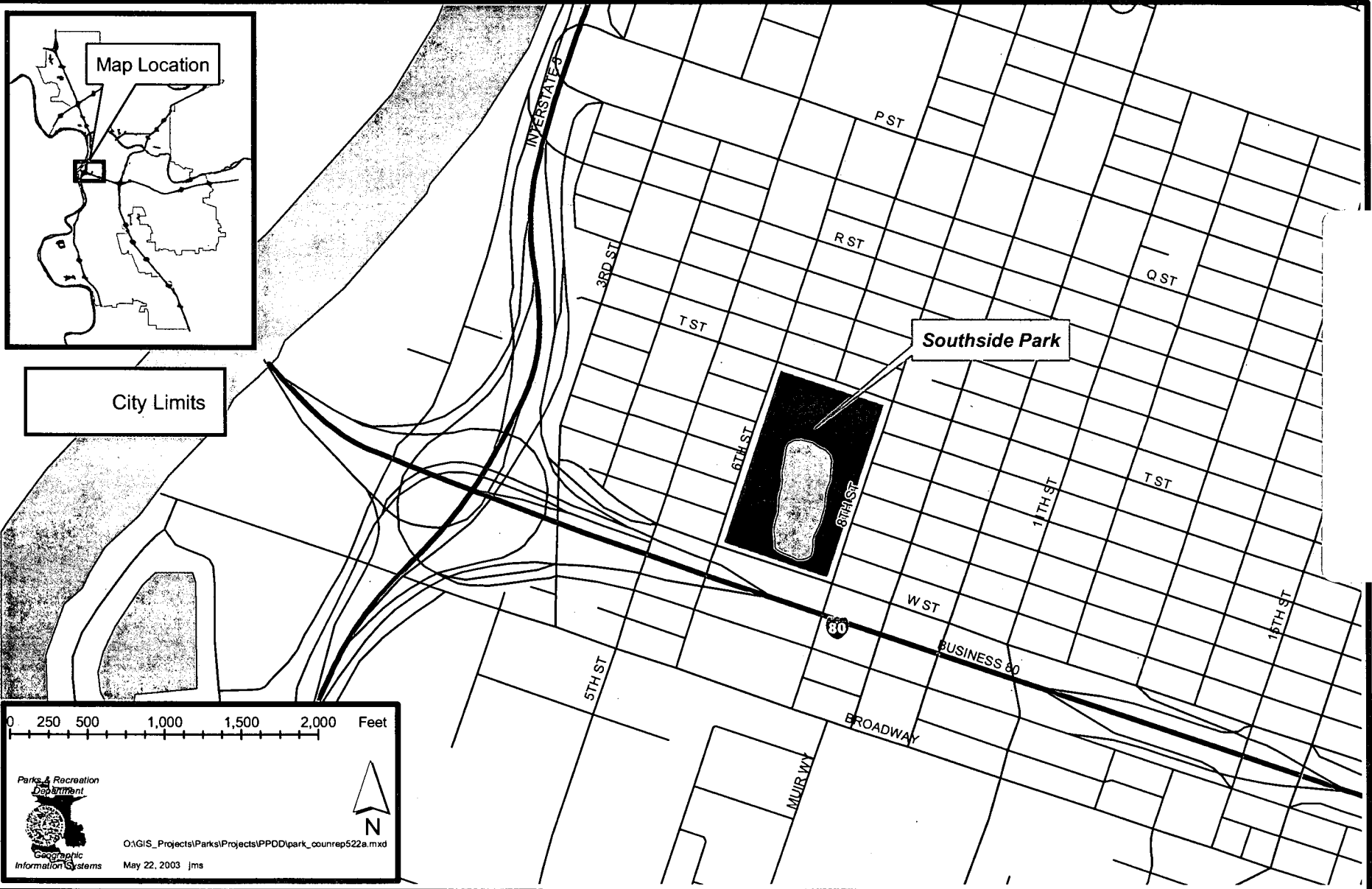


EXHIBIT B

9



01GIS_Projects\Parks\Projects\PPOD\park_counrep522a.mxd
May 22, 2003 jms