

# REPORT TO COUNCIL

## City of Sacramento

915 I Street, Sacramento, CA 95814-2604  
www.CityofSacramento.org

Consent  
April 13, 2010

Honorable Mayor and  
Members of the City Council

**Title: Agreements: Intelligent Transportation System (ITS) Expansion Signal  
Timing (T15088000)**

**Location/Council District:** West El Camino Avenue: Orchard Lane to American Avenue, District 1; Folsom Boulevard: Alhambra Boulevard to 65<sup>th</sup> Street, Districts 3 and 6; 65<sup>th</sup> Street/65<sup>th</sup> Street Expressway: Elvas Avenue to Elder Creek Road, Districts 3 and 6; Fruitridge Road: Martin Luther King Jr. Boulevard to Florin Perkins Road, Districts 5 and 6; Power Inn Road: Fruitridge Road to Elder Creek Road, District 6; Florin Road: Greenhaven Drive to Franklin Boulevard, Districts 4, 7, 5, 8; Pocket Road/Meadowview Road/Mack Road: Greenhaven Drive to Stockton Boulevard, Districts 4, 7, 8. Location Maps – Exhibits A-G of Resolution.

**Recommendation:** Adopt a **Resolution:** 1) authorizing the City Manager to execute a professional services agreement for traffic signal timing with Fehr & Peers Transportation Consultants for an amount not to exceed \$56,850; 2) authorizing the City Manager to execute a professional services agreement for traffic signal timing with Kimley Horn and Associates, Inc. for an amount not to exceed \$95,224; and 3) authorizing the City Manager to execute a professional services agreement for traffic signal timing with Rick Engineering Company for an amount not to exceed \$92,083.

**Contact:** Evangeline Lucas Lee, Associate Engineer, 808-7612; Angie Louie, Senior Engineer, 808-7921

**Presenters:** None

**Department:** Transportation

**Division:** Traffic Engineering

**Organization No:** 15001161

### Description/Analysis

**Issue:** After a one-year hold pending State grant funding, the City was recently authorized to resume the project to synchronize 93 traffic signals along seven major corridors. The project includes signal retiming and adding intelligent transportation system (ITS) elements along these corridors. The grant has an

aggressive time schedule where a construction contract has to be awarded by June 30, 2010. Traffic data collection and preliminary traffic delay studies must be completed prior to construction and while school is in session to have the most representative traffic volume data to develop signal timing. Proposals from three consultant firms on the City's existing on-call shortlist for professional services were solicited to provide signal timing: Fehr and Peers Transportation Consultants, Kimley Horn and Associates, Inc, and Rick Engineering Company. Staff recommends City Manager authorization to execute professional services agreements with these three firms.

**Policy Considerations:** The action requested supports the City's Strategic Plan goals of improving and expanding public safety, achieving sustainability and enhancing livability, and is consistent with Chapter 3.64 of the Sacramento City Code and existing policy regarding professional services agreements.

**Environmental Considerations:**

**California Environmental Quality Act (CEQA):** The award of a professional services agreement is not subject to CEQA review. It is anticipated the corridors identified will be implemented using federal and state transportation funds. The future project may be subject to environmental evaluation under CEQA guidelines and possibly National Environmental Protection Agency (NEPA) requirements.

**Sustainability Considerations:** This project supports the City of Sacramento's sustainability goals to improve and optimize the transportation infrastructure.

**Other:** None

**Commission/Committee Action:** None

**Rationale for Recommendation:** To meet the aggressive grant deadlines, the signal timing work was distributed amongst three pre-qualified consultants from the City's existing on-call shortlist for professional services rather than releasing a Request for Proposals. All three firms can complete the work within the project schedule. While all three firms provided proposals under \$100,000, City Manager authorization to execute these agreements is recommended.

**Financial Considerations:** As of March 2, 2010, ITS Expansion Project (T15088000) has a total budget of \$738,001 with an unobligated balance of \$539,680 which is sufficient to execute the three (3) professional services agreements in the amount not to exceed \$244,157 for signal timing. A separate report will be brought to Council to obligate funds for the construction portion of the project.

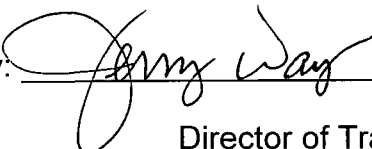
**Disadvantaged Business Enterprise (DBE):** The ITS Expansion Signal Timing Project has federal funding and requires conformance with project participation guidelines for Disadvantaged Business Enterprise (DBE) in lieu of the City of Sacramento Emerging and Small Business Enterprise (ESBE) program requirements.

At the time that the RFQ was advertised in August 2007, the DBE program had been suspended and there was no DBE goal.

Respectfully Submitted by:

  
Hector Barron  
City Traffic Engineer

Approved by:

  
Jerry Way  
Director of Transportation

Recommendation Approved:

  
Gus Vina  
Interim City Manager

**Table of Contents:**

Report	pg. 1
<b>Attachments</b>	
1 Background	pg. 4
2 Resolution	pg. 5
Exhibit A-West El Camino Avenue	pg. 7
Exhibit B- Folsom Boulevard	pg. 8
Exhibit C-65 <sup>th</sup> Street/65 <sup>th</sup> Street Expressway	pg. 9
Exhibit D-Fruitridge Road	pg. 10
Exhibit E-Power Inn Road	pg. 11
Exhibit F-Florin Road	pg. 12
Exhibit G-Pocket Road/Meadowview Road/Mack Road	pg. 13

## Attachment 1

### Background

In May 2008, the City of Sacramento Department of Transportation was awarded a State Traffic Light Synchronization Project (TLSP) Grant in the amount of \$2,862,000 to synchronize major arterials including signal retiming and addition of Intelligent Transportation System (ITS) elements on seven major corridors:

- West El Camino Avenue: Orchard Lane to American Avenue
- Folsom Boulevard: Alhambra Boulevard to 65<sup>th</sup> Street
- 65<sup>th</sup> Street/65<sup>th</sup> Street Expressway: Elvas Avenue to Elder Creek Road
- Fruitridge Road: Martin Luther King Jr. Boulevard to Florin Perkins Road
- Power Inn Road: Fruitridge Road to Elder Creek Road
- Florin Road: Greenhaven Drive to Franklin Boulevard
- Pocket Road/Meadowview Road/Mack Road: Greenhaven Drive to Stockton Boulevard

The project has been on hold for the past year pending State funding through the sale of bonds. In January 2010, the City received notice from the State that the funding has been allocated and the project can resume. The grant has a very aggressive project schedule.

A construction contract has to be awarded by June 30, 2010. The preliminary signal timing work and studies must be completed while school is in session. Due to the aggressive grant schedule and scope of work, three pre-qualified firms on the City's existing on-call shortlist for professional services were asked to provide signal timing proposals. These firms were all deemed responsive during the City's Request for Qualifications for On-Call services released in August 2007. Alternatively, releasing a Request for Proposal for this project would take several months, jeopardizing meeting the grant deadlines and completing preliminary timing work before the end of school. Traffic data collection and preliminary traffic delay studies must be completed before construction begins and while school is in session to have the most representative traffic volume data to develop signal timing. Additionally, with 93 intersections, it would be very difficult for one consultant to complete the entire scope of work within the deadlines.

The signal timing work will be divided amongst three consultants as follows:

- Fehr and Peers Transportation Consultants: Florin Road, West El Camino Avenue (26 signals)
- Kimley Horn and Associates, Inc.: Fruitridge Road, 65<sup>th</sup> Street/65<sup>th</sup> Street Expressway/Elvas Avenue, Power Inn Road (34 signals)
- Rick Engineering Company: Pocket Road/Meadowview Road/Mack Road, Folsom Boulevard (33 signals)

City Manager authorization to execute professional services agreements with these three firms is recommended.

**Attachment 2**

**RESOLUTION NO.**

Adopted by the Sacramento City Council

**AGREEMENTS: INTELLIGENT TRANSPORTATION SYSTEM (ITS)  
EXPANSION SIGNAL TIMING (T15088000)**

**BACKGROUND**

- A. May 2008, the City of Sacramento Department of Transportation received a State Traffic Light Synchronization Project grant to synchronize signals along seven major corridors including signal retiming and addition of Intelligent Transportation System (ITS) elements.
- B. In August 2007, the Department of Transportation solicited a Request for Qualifications for on-call professional services for Traffic Operations, Modeling, and Impact Studies.
- C. Traffic data collection and preliminary traffic delay studies must be completed prior to construction and while school is in session for the most representative traffic volume data to develop signal timing. To meet the aggressive grant deadlines, this report requests approval of professional services agreements for signal timing with three prequalified firms from the on-call professional services list: Fehr and Peers Transportation Consultants, Kimley Horn and Associates, Inc., and Rick Engineering Company.

**BASED ON THE FACTS SET FORTH IN THE BACKGROUND, THE CITY COUNCIL  
RESOLVES AS FOLLOWS:**

- Section 1. The City Manager is authorized and directed to execute a professional services agreement for traffic signal timing with Fehr & Peers Transportation Consultants for an amount not to exceed \$56,850.
- Section 2. The City Manager is authorized and directed to execute a professional services agreement for traffic signal timing with Kimley Horn and Associates, Inc. for an amount not to exceed \$95,224.
- Section 3. The City Manager is authorized to execute a professional services agreement for traffic signal timing with Rick Engineering Company for an amount not to exceed \$92,083.

Section 4. Exhibits A through G are incorporated into and made part of this resolution.

**Table of Contents**

Exhibit A: Map of West El Camino Avenue

Exhibit B: Map of Folsom Boulevard

Exhibit C: Map of 65<sup>th</sup> Street/65<sup>th</sup> Street Expressway

Exhibit D: Map of Fruitridge Road

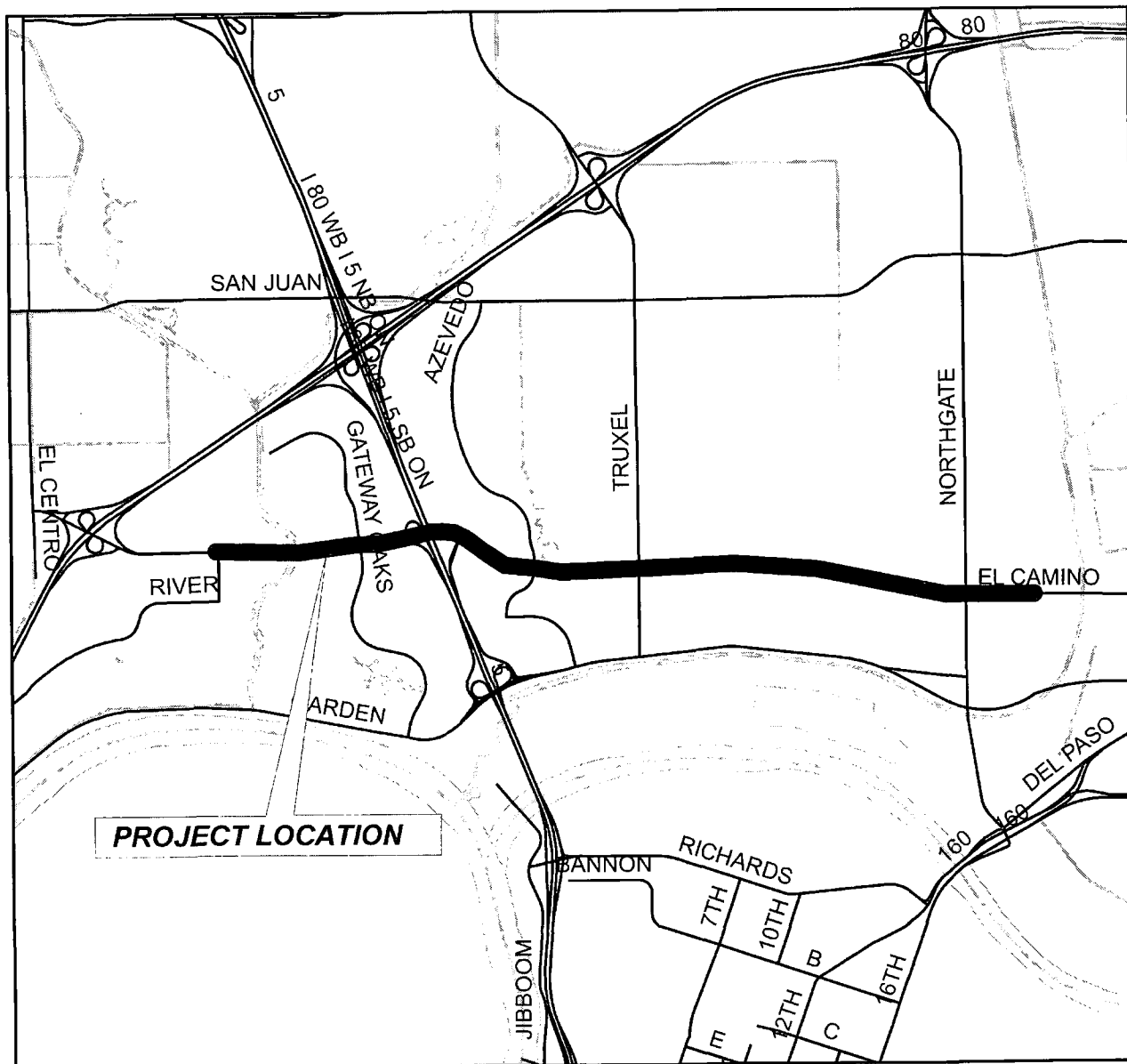
Exhibit E: Map of Power Inn Road

Exhibit F: Map of Florin Road

Exhibit G: Map of Pocket Road/Meadowview Road/Mack Road

EXHIBIT A

LOCATION MAP FOR  
WEST EL CAMINO AVENUE  
ORCHARD LANE TO AMERICAN AVENUE

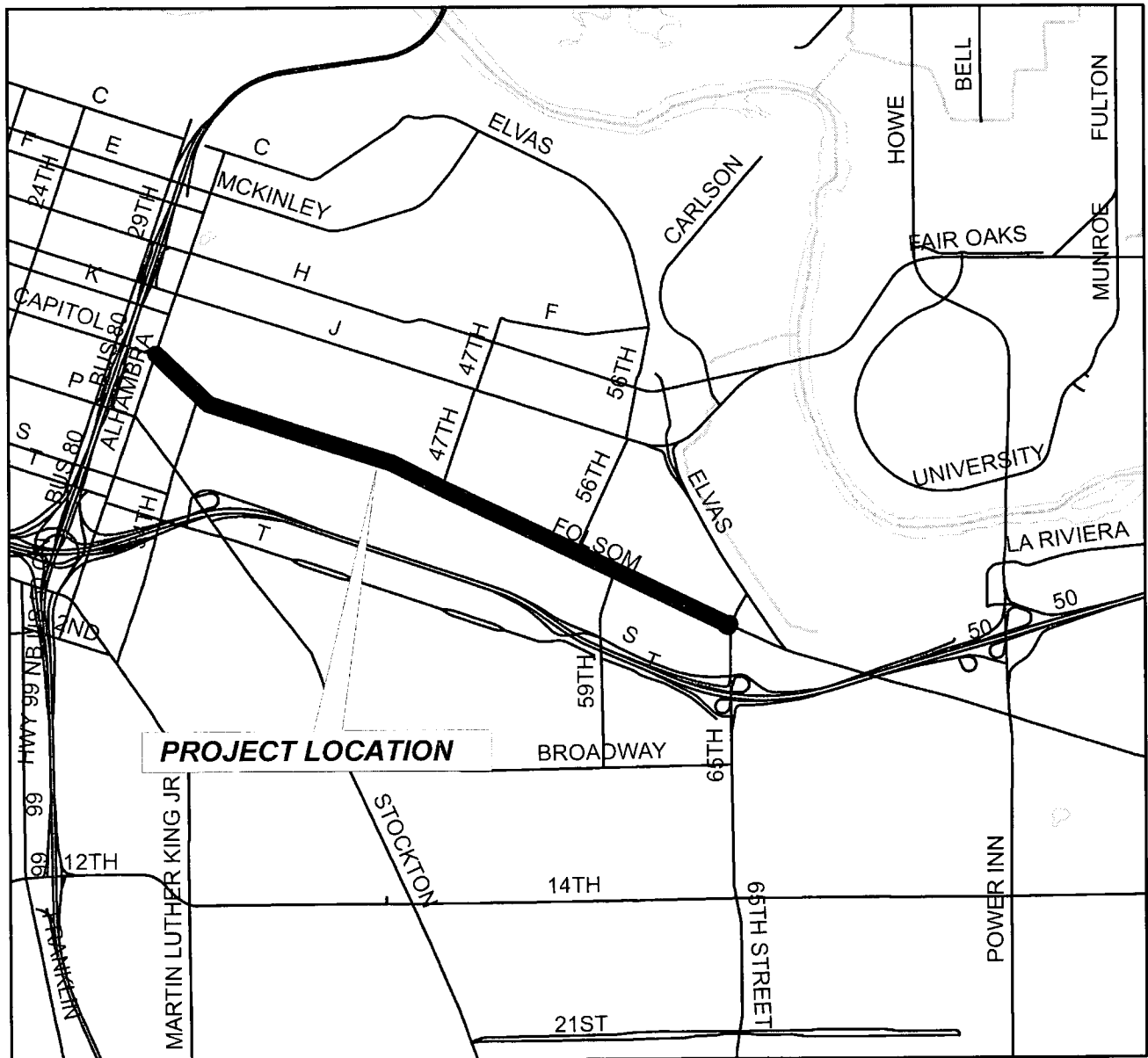


Map Contact: Hamid Khalessi  
Date: February 11, 2008



EXHIBIT B

LOCATION MAP FOR  
FOLSOM BOULEVARD  
ALHAMBRA BOULEVARD TO 65TH STREET



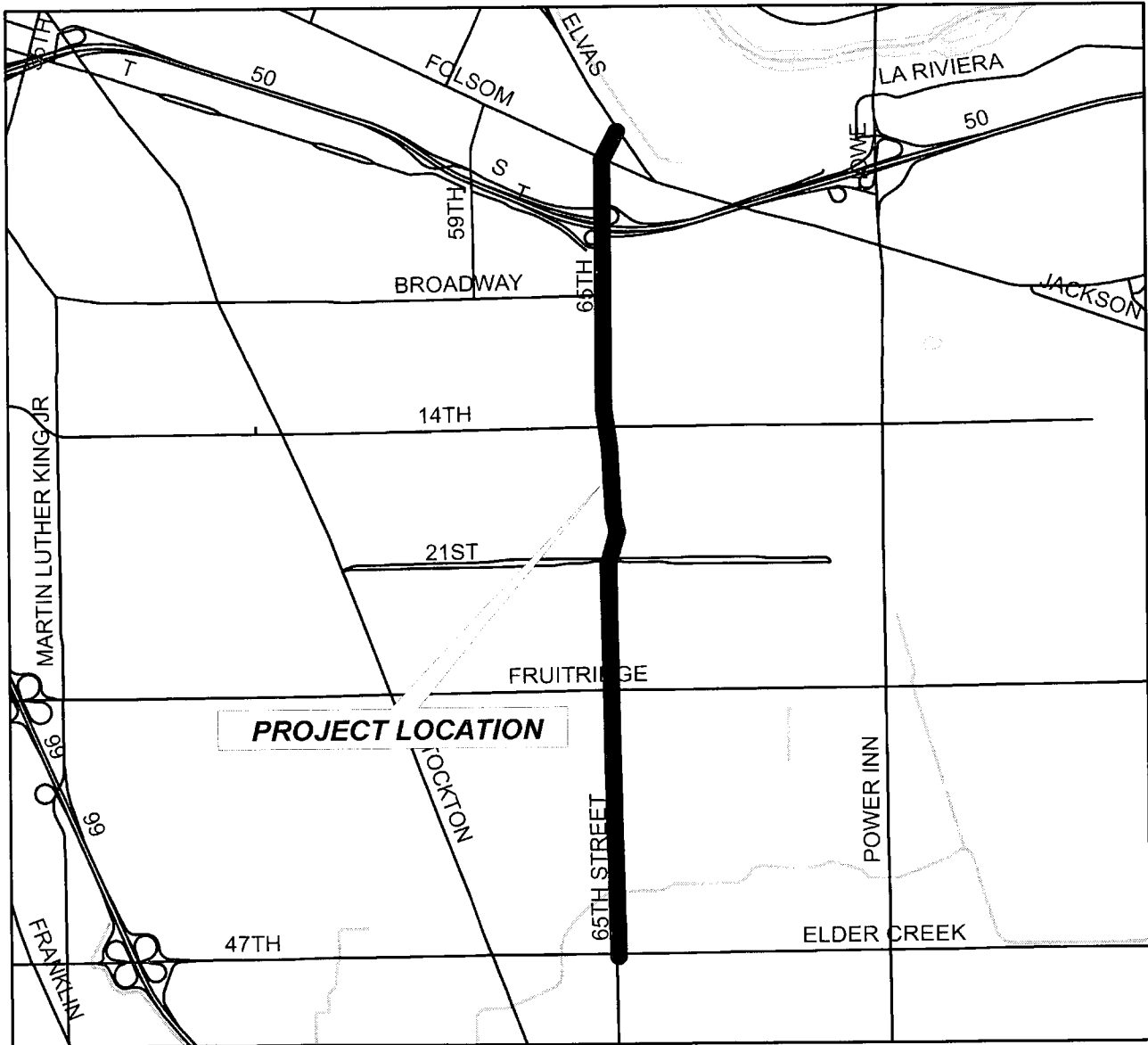
Map Contact: Hamid Khalessi  
Date: February 11, 2008





EXHIBIT C

LOCATION MAP FOR  
65TH STREET/65TH STREET EXPRESSWAY  
ELVAS AVENUE TO ELDER CREEK ROAD

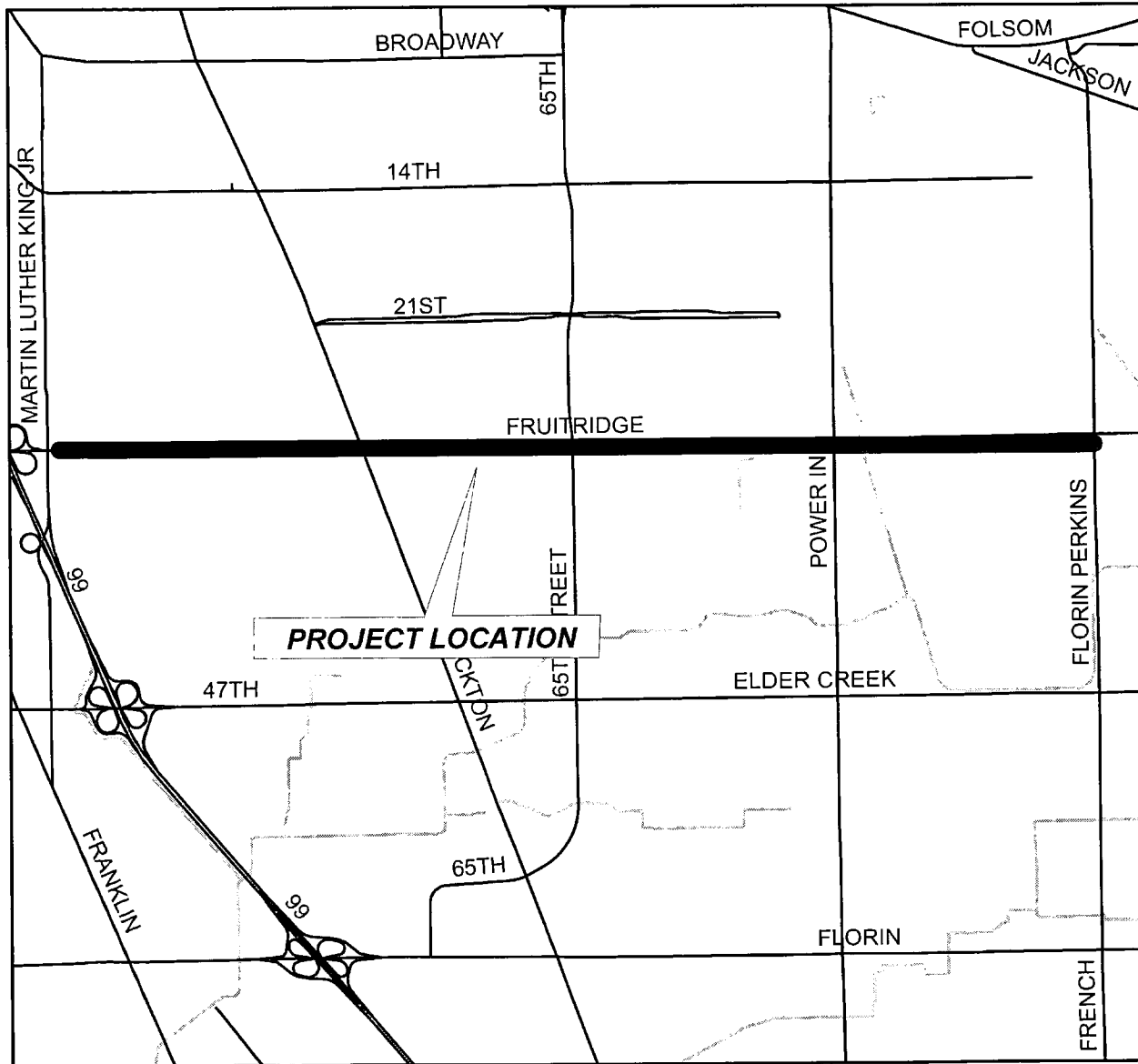


Map Contact: Hamid Khalessi  
Date: February 11, 2008



EXHIBIT D

LOCATION MAP FOR  
FRUITRIDGE ROAD  
MARTIN LUTHER KING Jr. BOULEVARD  
TO FLORIN PERKINS ROAD

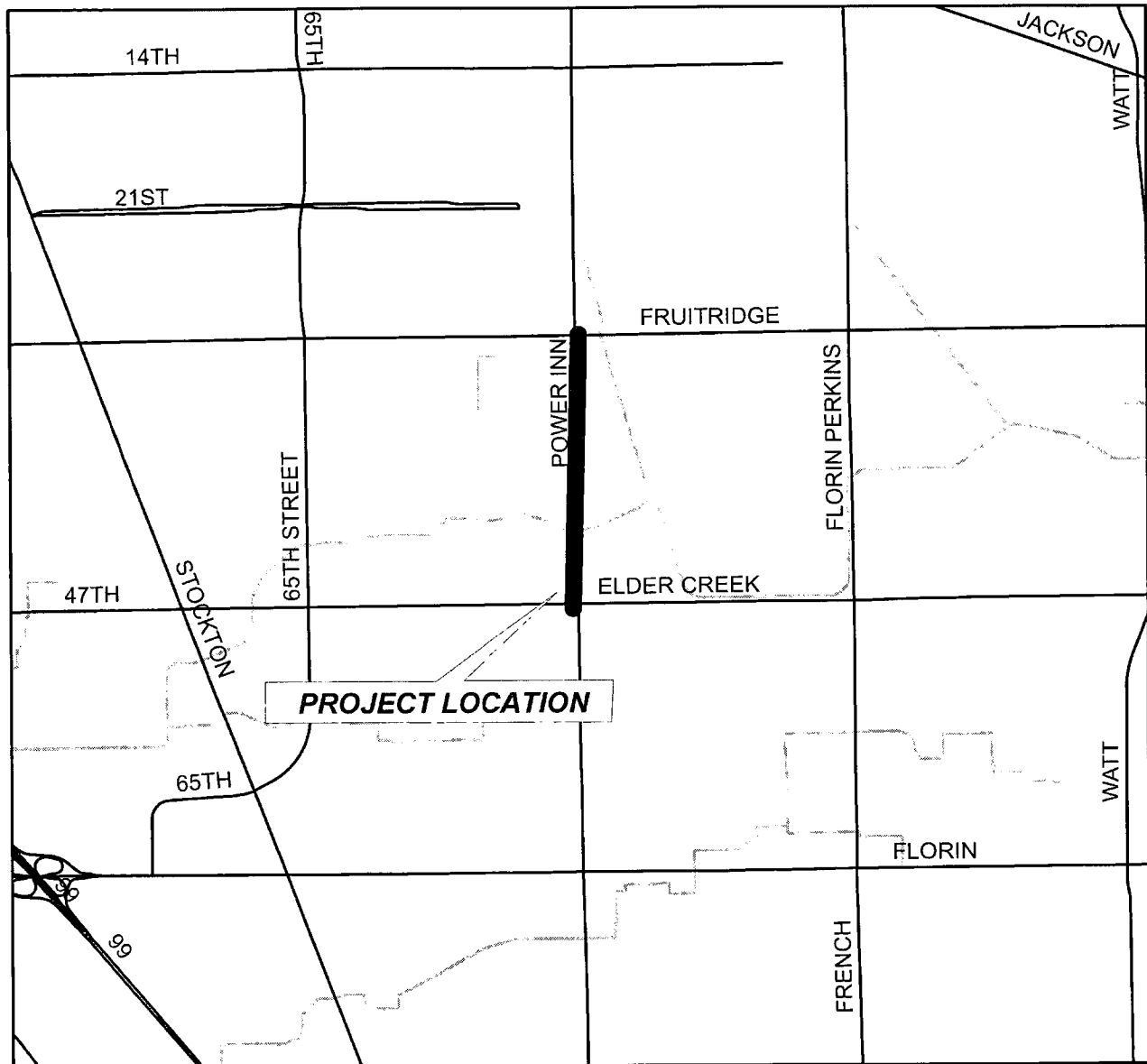


Map Contact: Hamid Khalessi  
Date: February 11, 2008



EXHIBIT E

LOCATION MAP FOR  
POWER INN ROAD  
FRUITRIDGE ROAD TO ELDER CREEK ROAD

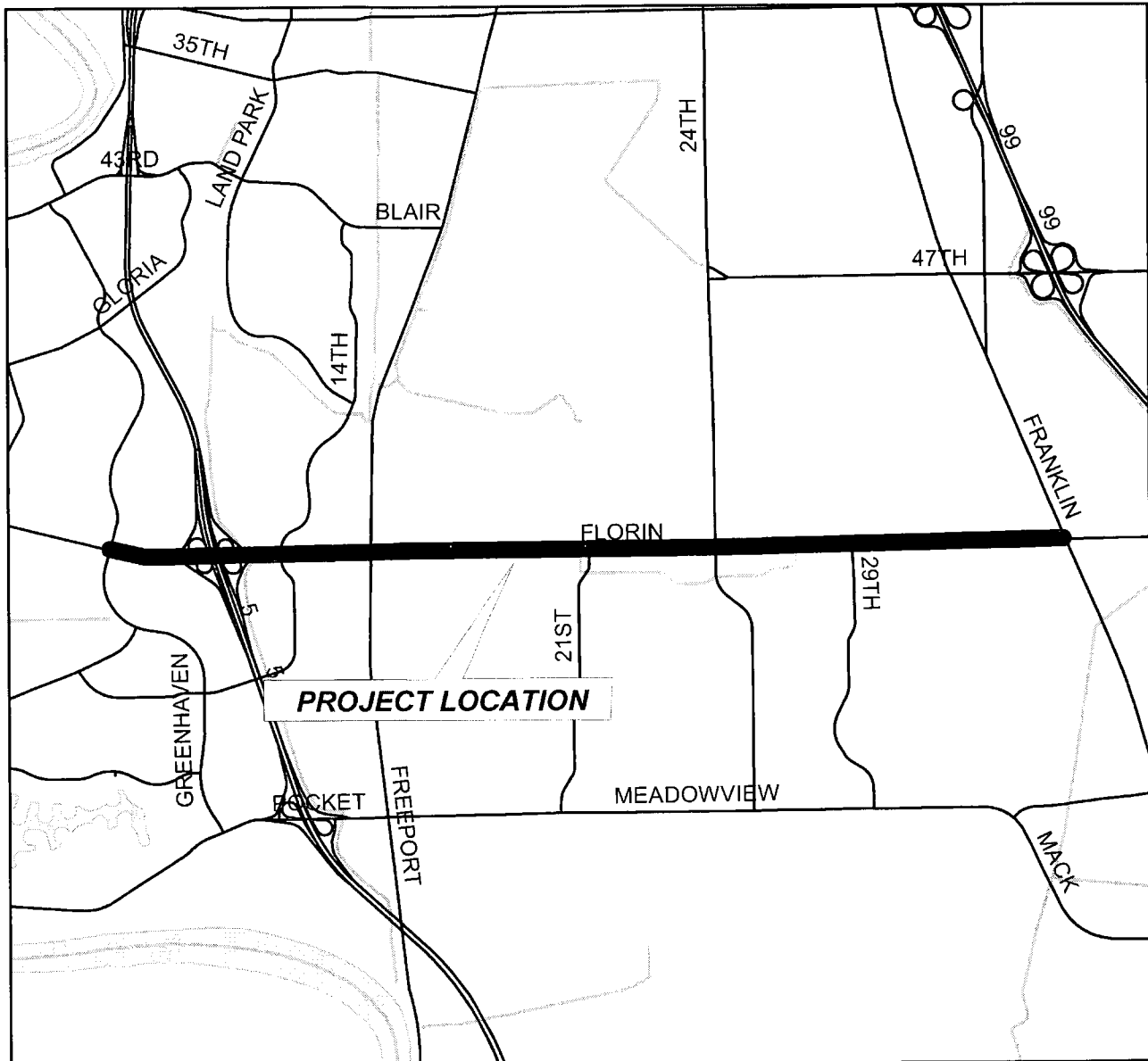


Map Contact: Hamid Khalessi  
Date: February 11, 2008



EXHIBIT F

LOCATION MAP FOR  
FLORIN ROAD  
GREENHAVEN DRIVE TO FRANKLIN BOULEVARD

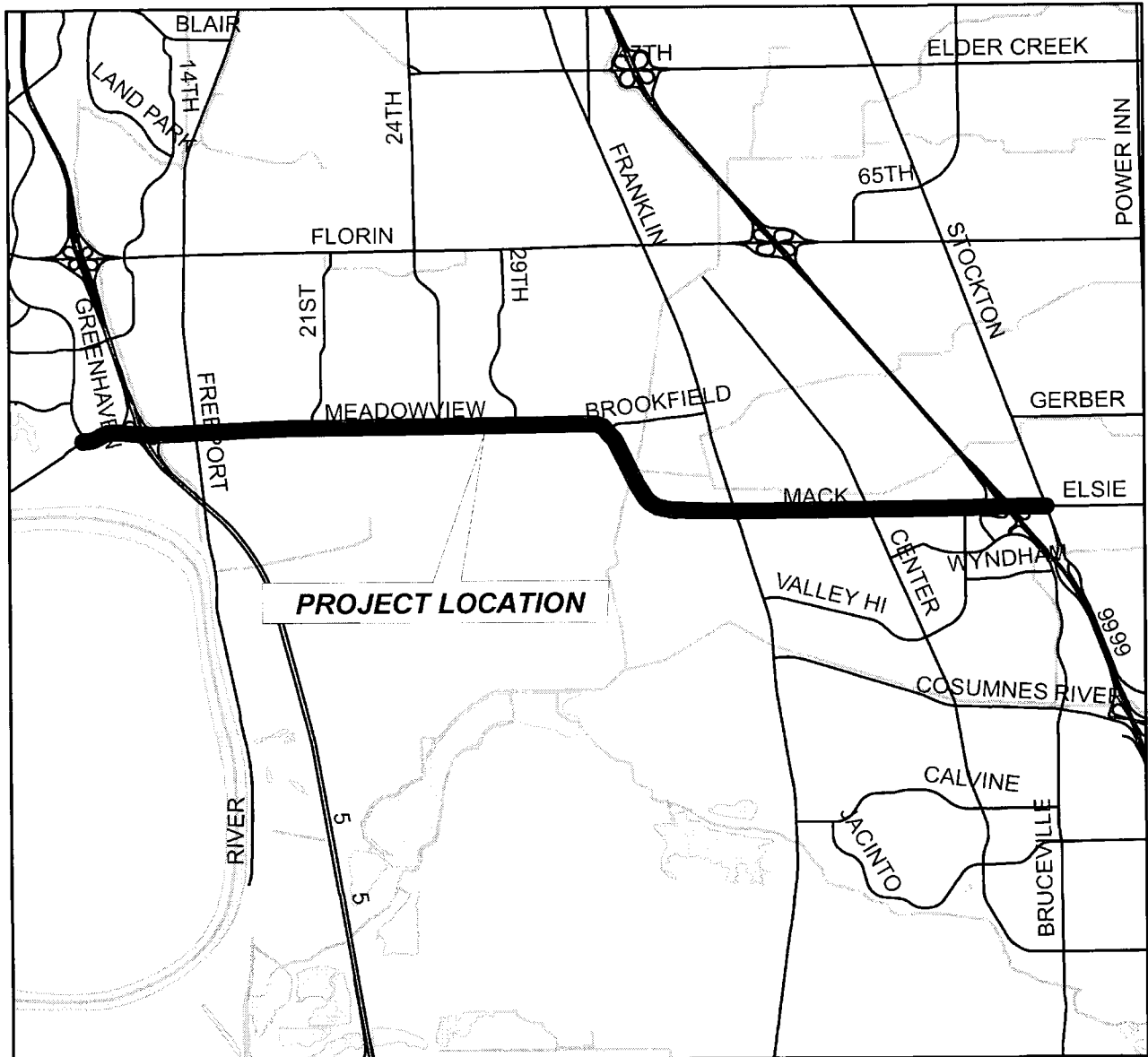


Map Contact: Hamid Khalessi  
Date: February 11, 2008



EXHIBIT G

LOCATION MAP FOR  
POCKET ROAD/MEADOWVIEW ROAD/MACK ROAD  
GREENHAVEN DRIVE TO STOCKTON BOULEVARD



Map Contact: Hamid Khalessi  
Date: February 11, 2008

