



APPROVED  
BY THE CITY COUNCIL

AUG 6 1998

OFFICE OF THE  
CITY CLERK

1.2

CITY OF SACRAMENTO  
CALIFORNIA

DEPARTMENT OF  
PUBLIC WORKS

TECHNICAL SERVICES DIVISION

DEVELOPMENT  
SERVICES  
1231 I STREET, STE 200  
SACRAMENTO, CA  
95814-2988  
PH 916-264-7995  
FAX 916-448-8450

July 16, 1998

City Council  
Sacramento, California

Honorable Members In Session:

**SUBJECT:** APPROVAL OF FINAL MAP FOR TWIN PALMS - (P97-110)

**LOCATION/COUNCIL DISTRICT:**

Southwest corner of 6<sup>th</sup> Street and S Street  
Council District 4

**RECOMMENDATION:**

This report recommends the City Council approve the attached resolution for the Final Map for Twin Palms.

**CONTACT PERSON:**

Jerry Lovato, Engineering Technician, 264-7918

Jon Blank, Associate Engineer, 264-7493

**FOR COUNCIL MEETING OF:**

August 6, 1998

**SUMMARY:**

On April 21, 1998, the City Council approved a Tentative Subdivision Map by adopting Resolution No. 98-138. All conditions of the subdivision's tentative map have been met by the subdivider, the Redevelopment Agency of the City of Sacramento. The subdivider wishes to file the Final Map. The Final Map requires approval by the City Council.

City Council  
Final Map (P97-110)  
July 16, 1998

**COMMITTEE/COMMISSION ACTION:**

None.

**BACKGROUND INFORMATION:**

On April 21, 1998, the City Council approved a Tentative Subdivision Map by adopting Resolution No. 98-138.

Pursuant to Sacramento City Code, Chapter 40.07.711, and Government Code Section 66458, the City Council may, by resolution, approve final maps. The map presented conforms to all the requirements of the Government Code and Title 40 of the City Code, applicable at the time of conditional approval of the Tentative Map.

The Final Map is consistent with the Central City Community Plan. All conditions in the staff subdivision report have been met, and the Final Map is presented for approval.

**FINANCIAL CONSIDERATIONS:**

All subdivision costs are being paid by the subdivider, the Redevelopment Agency of the City of Sacramento.

**ENVIRONMENTAL CONSIDERATIONS:**

On April 21, 1998, the City Council adopted Resolution No. 98-138 ratifying the Negative Declaration and approving the mitigation monitoring plan for this project.

**POLICY CONSIDERATIONS:**

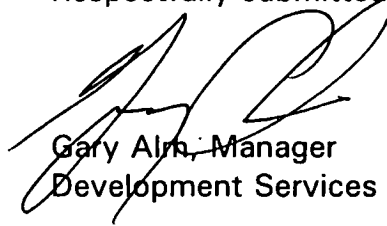
Pursuant to Sacramento City Code, Chapter 40.07.711, and Government Code Section 66458, the City Council may, by resolution, approve final maps. The map presented conforms to all the requirements of the Government Code and Title 40 of the City Code, applicable at the time of conditional approval of the Tentative Map.

City Council  
Final Map (P97-110)  
July 16, 1998

**MBE/WBE:**

None, since no goods or services are being procured with this action.

Respectfully submitted,



Gary Alm, Manager  
Development Services & Special Districts

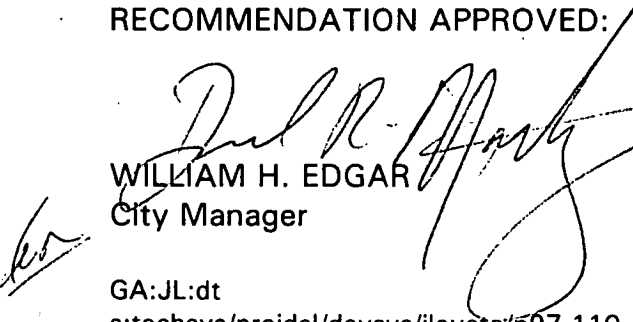
Approved:



Duane J. Wray  
Manager, Technical Services Division

RECOMMENDATION APPROVED:

Approved:



WILLIAM H. EDGAR  
City Manager



Michael Kashiwagi  
Director of Public Works

GA:JL:dt  
s:techsvs/projdel/devsvs/jlovato/p97-110  
07.1698.1  
Attachment

APPROVED  
BY THE CITY COUNCIL

AUG 6 1998

OFFICE OF THE  
CITY CLERK

**RESOLUTION NO. 98-390**

ADOPTED BY THE SACRAMENTO CITY COUNCIL

ON DATE OF \_\_\_\_\_

**APPROVING FINAL MAP ENTITLED "TWIN PALMS" (P97-110)**

**WHEREAS, THE CITY COUNCIL OF THE CITY OF SACRAMENTO FINDS AND DETERMINES AS FOLLOWS:**

- A. The Final Map for Twin Palms, located at the southwest corner of 6<sup>th</sup> Street and S Street, with provisions for its design and improvement, is consistent with the Central City Community Plan. See Exhibit "A" for project location.
- B. The Final Map is in substantial compliance with the previously approved tentative map.

**NOW, THEREFORE, BE IT RESOLVED BY THE COUNCIL OF THE CITY OF SACRAMENTO AS FOLLOWS:**

- 1. The Final Map for this project is hereby approved.
- 2. All offers of dedication shown on said map are hereby accepted.

\_\_\_\_\_  
MAYOR

ATTEST:

\_\_\_\_\_  
CITY CLERK

S:\techsvs\projdel\devsvs\jlovato\p97-110  
07.1698.1

\_\_\_\_\_  
FOR CITY CLERK USE ONLY

RESOLUTION NO.: \_\_\_\_\_

DATE ADOPTED: \_\_\_\_\_

EXHIBIT A

PLAT OF

# TWIN PALMS

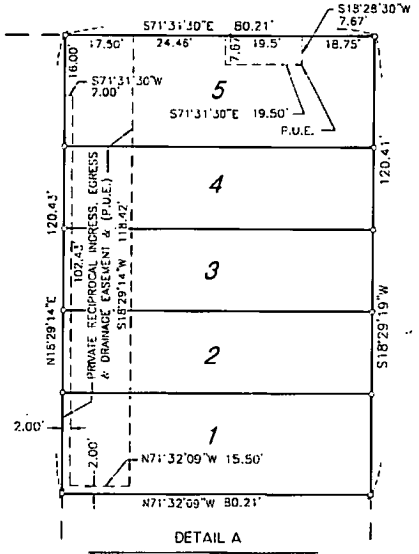
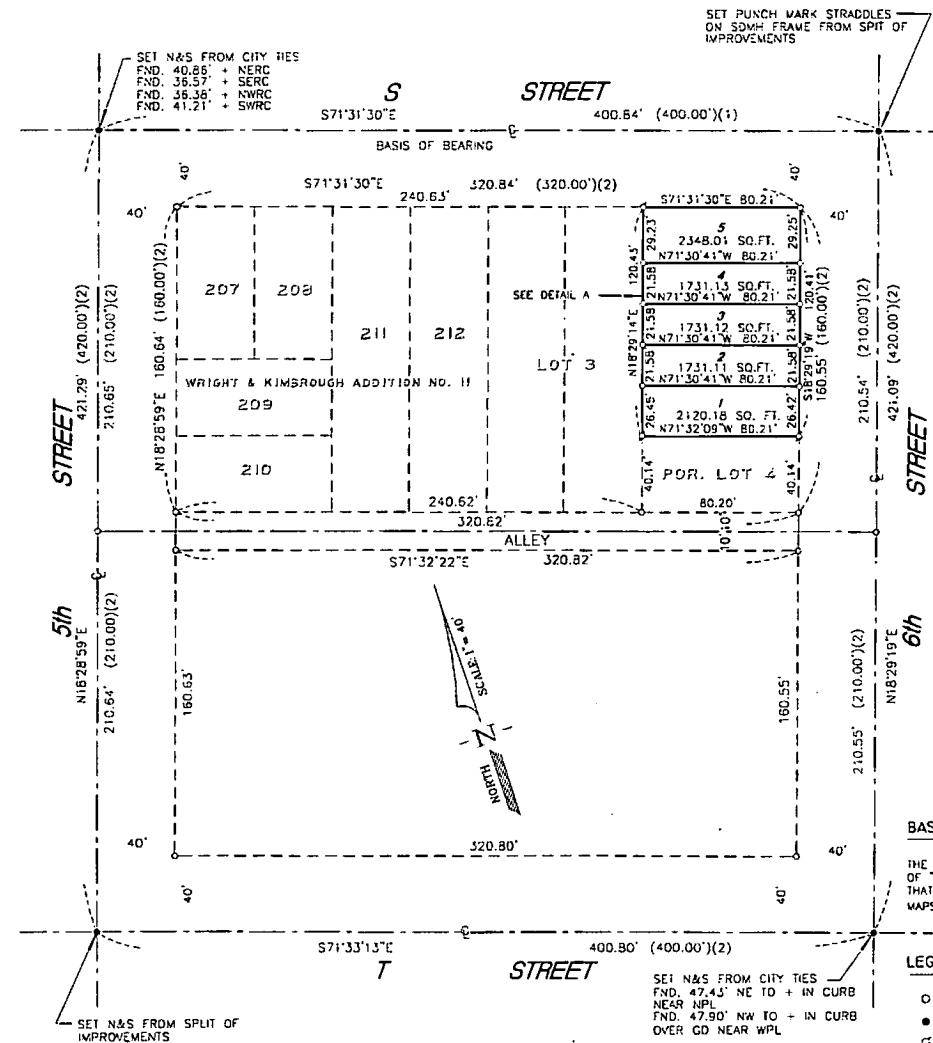
A PORTION OF LOT 4 IN THE BLOCK BOUNDED BY 5th, 6th, "S" AND "T" STREETS IN THE CITY OF SACRAMENTO, STATE OF CALIFORNIA

JULY, 1998

SCALE: 1"=40'

SURVEYORS GROUP, INC.

LOOMIS, CALIFORNIA  
SHEET 2 OF 2



### BASIS OF BEARINGS

THE BASIS OF BEARINGS FOR THIS SURVEY IS THE CENTERLINE OF "S" STREET BETWEEN 5th & 6th STREETS AS SHOWN ON THAT CERTAIN RECORD OF SURVEY RECORDED IN BOOK 26 OF MAPS AT PAGE 18 WHICH BEARS N71°31'30"W.

### LEGEND:

- - DIMENSION POINT NOTHING FOUND NOTHING SET
- - FOUND OR SET AS NOTED
- σ - SET 3/4" I.P. FACED LS 4412
- (1) - RECORD PER ROS 26-18
- (2) - OFFICIAL PLAT OF THE CITY OF SACRAMENTO

### NOTES:

- 1) THIS SUBDIVISION CONTAINS 0.22 ACRES, MORE OR LESS.
- 4) PRIVATE RECIPROCAL INGRESS, EGRESS & DRAINAGE EASEMENT SHOWN HEREON SHALL BE DEDICATED WITH THE SALE OF EACH PARCEL.