



12

DEPARTMENT OF  
PUBLIC WORKS

ENGINEERING DIVISION

THOMAS M. FINLEY  
ENGINEERING DIVISION MANAGER

June 27, 1989

City Council  
Sacramento, California

Honorable Members In Session:

SUBJECT: Northeast Corner Power Inn and Fruitridge Road (P-88363) - Approval of Final Subdivision Map and Agreement

SUMMARY

Adoption of a resolution approving a Final Subdivision Map and Agreement for the Northeast Corner Power Inn and Fruitridge Road project, is recommended.

BACKGROUND

On January 31, 1989, the City Council approved a Tentative Subdivision Map by adopting Resolution No. 89-089.

All conditions in the staff subdivision report have been met and the Final Subdivision Map is presented for approval.

FINANCIAL DATA

All subdivision costs are being paid by the subdivider, Jackson & Ekstrom, a California General Partnership.

POLICY CONSIDERATION

None.

MBE/WBE EFFORTS

None.

CITY OF SACRAMENTO  
CALIFORNIA

**APPROVED**  
BY THE CITY COUNCIL

JUN 27 1989

OFFICE OF THE  
CITY CLERK

AG 88268

927 TENTH STREET  
ROOM 200  
SACRAMENTO, CA  
95814-2705

916-449-8220

CONSTRUCTION SECTION  
640 BERKUT DRIVE  
SUITE B  
SACRAMENTO, CA  
95814-0131

916-449-5282

GENERAL

BACKGROUND

EXAMINER DATA

POLICY CONSTRUCTION

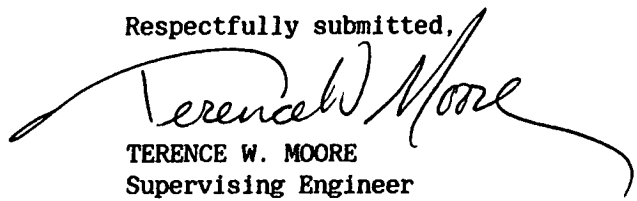
MEMBER EMPLOYER

City Council  
N/E Corner Power Inn & Fruitridge (P-88363)  
June 27, 1989  
Page 2

RECOMMENDATION


It is recommended that the attached resolution approving the Final Subdivision Map and Agreement be adopted.

Respectfully submitted,



TERENCE W. MOORE  
Supervising Engineer  
Development Services

Recommendation Approved:

  
WALTER J. SLIPE  
City Manager


NT:jd  
DS5-29.F  
06.1989.1

Attachment

CONTACT PERSON

Robert Jones, Senior Engineer  
449-8210

Approved:

  
MELVIN H. JOHNSON  
Director of Public Works

June 27, 1989  
District No. 6



**RESOLUTION NO. 89-489**

**APPROVED**  
BY THE CITY COUNCIL

ADOPTED BY THE SACRAMENTO CITY COUNCIL

JUN 27 1989

ON DATE OF \_\_\_\_\_

CITY CLERK

APPROVING FINAL SUBDIVISION MAP AND AGREEMENT FOR  
NORTHEAST CORNER POWER INN AND FRUITRIDGE ROAD -  
(P-88363)

WHEREAS, THE COUNCIL OF THE CITY OF SACRAMENTO FINDS AND DETERMINES AS FOLLOWS:

- A. The Final Subdivision Map for the Northeast Corner Power Inn and Fruitridge Road project, with provisions for its design and improvement, is consistent with the City General Plan and Chapter 40 of the City Code which is a specific plan of the City.
- B. The Final Subdivision Map is in substantial compliance with the previously approved tentative map.

NOW, THEREFORE, BE IT RESOLVED BY THE COUNCIL OF THE CITY OF SACRAMENTO AS FOLLOWS:

1. The Final Subdivision Map for said project, whose location is noted above, is hereby approved subject to the execution by all parties of the Subdivision Improvement Agreement for that subdivision.
2. All offers of dedication shown on said map are hereby accepted subject to the improvement thereof required by the Subdivision Agreement.
3. The City Manager and City Clerk be authorized and directed to execute on behalf of the City of Sacramento that certain Subdivision Improvement Agreement and Abstract thereof between the City and Jackson & Ekstrom, a California General Partnership to provide for the subdivision improvements required by the Subdivision Map Act and Chapter 40 (Subdivision Regulations) of the Sacramento City Code.
4. The Real Estate Supervisor is authorized and directed to record the above-mentioned agreement in the official records of Sacramento County.

ATTEST:

\_\_\_\_\_  
MAYOR

\_\_\_\_\_  
CITY CLERK

DS5-29.F  
06.1989.1

**FOR CITY CLERK USE ONLY**

RESOLUTION NO.: \_\_\_\_\_

DATE ADOPTED: \_\_\_\_\_

PRELIMINARY MAP

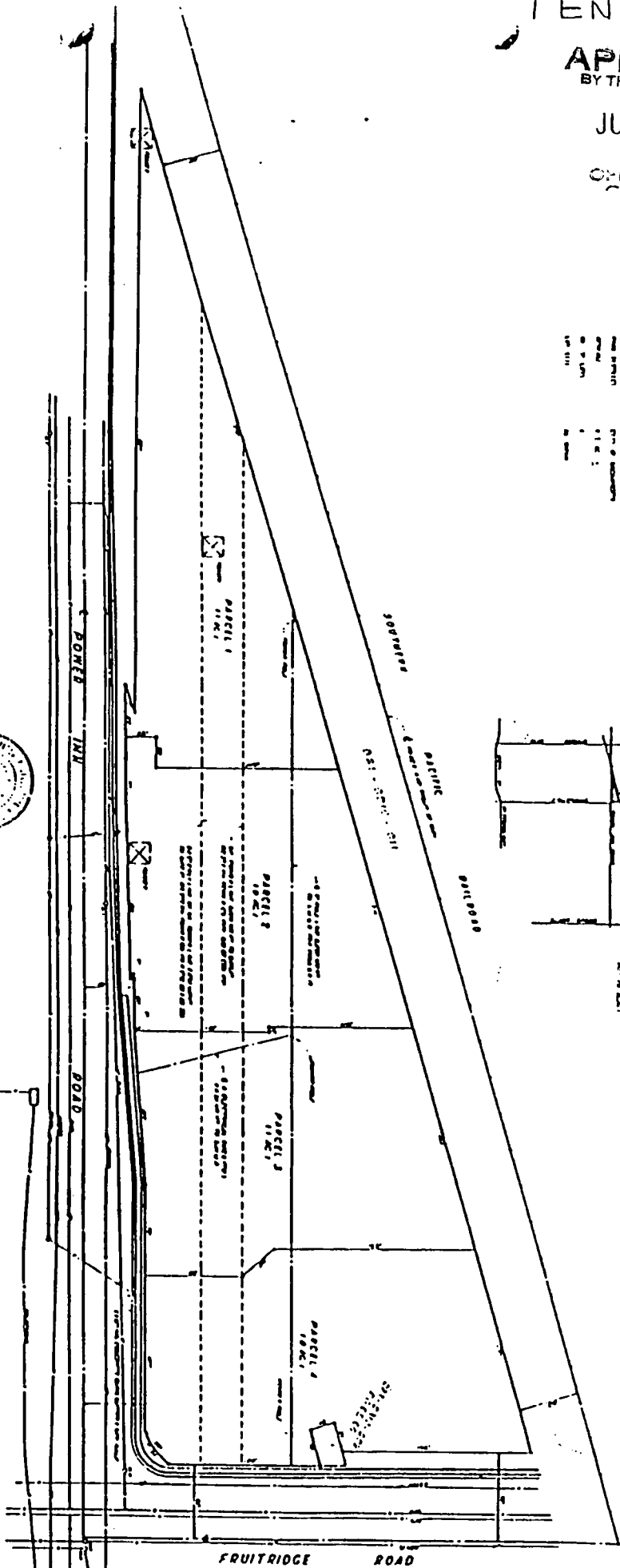
APPROVED  
BY THE CITY COUNCIL

12

JUN 27 1989

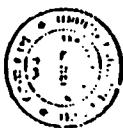
OFFICE OF THE  
CITY ENGINEER

- 1. ALL DIMENSIONS ARE IN FEET AND DECIMALS THEREOF.
- 2. ALL DIMENSIONS ARE TO CENTERLINE UNLESS OTHERWISE NOTED.
- 3. ALL DIMENSIONS ARE TO CENTERLINE UNLESS OTHERWISE NOTED.
- 4. ALL DIMENSIONS ARE TO CENTERLINE UNLESS OTHERWISE NOTED.
- 5. ALL DIMENSIONS ARE TO CENTERLINE UNLESS OTHERWISE NOTED.
- 6. ALL DIMENSIONS ARE TO CENTERLINE UNLESS OTHERWISE NOTED.
- 7. ALL DIMENSIONS ARE TO CENTERLINE UNLESS OTHERWISE NOTED.
- 8. ALL DIMENSIONS ARE TO CENTERLINE UNLESS OTHERWISE NOTED.
- 9. ALL DIMENSIONS ARE TO CENTERLINE UNLESS OTHERWISE NOTED.
- 10. ALL DIMENSIONS ARE TO CENTERLINE UNLESS OTHERWISE NOTED.



APPROVED BY  
CITY ENGINEER

| DATE | DESCRIPTION | BY |
|------|-------------|----|
|      |             |    |
|      |             |    |
|      |             |    |
|      |             |    |



BENCH MARK

A PORTION OF THE SW 1/4, SECTION 23,  
T8N, R5E, M10M.  
CITY OF SEASIDE, CALIFORNIA  
TRIBUTARY PARCEL MAP

|      |  |
|------|--|
| DATE |  |
| BY   |  |
|      |  |

88 11 21

813

July 6, 1989

Jackson and Ekstrom  
5665 Power Inn Rd., Suite 140  
Sacramento CA 95824

On June 27, 1989, the Sacramento City Council adopted Resolution No. 89-489 authorizing the execution of Agreement No. 88268 regarding final subdivision map.

Enclosed, for your records, is one fully certified copy of said agreement and authorizing resolution.

Sincerely,

Janice Beaman  
Acting Assistant City Clerk

mls/12

Enclosures

cc: Public Works  
Risk Management