



APPROVED  
BY THE CITY COUNCIL

JUN 8 1999

1.4

OFFICE OF THE  
CITY CLERK

DEPARTMENT OF  
PUBLIC WORKS

CITY OF SACRAMENTO  
CALIFORNIA

DEVELOPMENT SERVICES  
1231 I STREET  
ROOM 200  
SACRAMENTO, CA  
95814  
PH 916-264-7995  
FAX 916-448-8450

TECHNICAL SERVICES DIVISION

AG99-091

May 4, 1999

City Council  
Sacramento, California

Honorable Members In Session:

**SUBJECT: APPROVAL OF FINAL MAP AND SUBDIVISION IMPROVEMENT AGREEMENT FOR  
LAGUNA VEGA NORTH PHASE 1 - (P91-252)**

**LOCATION/COUNCIL DISTRICT:**

East side of Bruceville Road at Damascas Drive.  
Council District 8

**RECOMMENDATION:**

This report recommends the City Council approve the attached resolution for the Final Map and Subdivision Improvement Agreement for Laguna Vega North Phase 1.

**CONTACT PERSON:**

Faramarz Ansari, Associate Engineer, 264-7493

**FOR COUNCIL MEETING OF:**

June 8, 1999

**SUMMARY:**

On June 18, 1993, the City Council approved a Tentative Subdivision Map by adopting Resolution No. 92-879. All conditions of the subdivision's tentative map have been met by the subdivider, Raymus Development and Sales, Inc., a California Corporation, and D.R. Horton - Sacramento Inc., a California Corporation. The subdivider wishes to file the Final Map prior to completing the required subdivision improvements. The deferral of these improvements requires the subdivider to enter into a subdivision improvement agreement with the City wherein the subdivider will complete the improvements at a later date. The Final Map and the Subdivision Improvement Agreement

City Council  
Final Map and Subdivision Agreement for Laguna Vega North Phase 1 (P91-252)  
May 4, 1999

requires approval by the City Council.

**COMMITTEE/COMMISSION ACTION:**

None.

**BACKGROUND INFORMATION:**

On June 18, 1993, the City Council approved a Tentative Subdivision Map by adopting Resolution No. 92-879.

Pursuant to Sacramento City Code, Chapter 40.07.711, and Government Code Section 66458, the City Council may, by resolution, approve final maps. The map presented conforms to all the requirements of the Government Code and Title 40 of the City Code, applicable at the time of conditional approval of the Tentative Map.

The Final Map is consistent with the Jacinto Creek Planning Area (JCPA), Jacinto Community Plan Area. All conditions in the staff subdivision report have been met, the deferred improvement work has been secured through a subdivision improvement agreement, and the Final Map is presented for approval.

**FINANCIAL CONSIDERATIONS:**

All subdivision costs are being paid by the subdivider, Raymus Development and Sales, Inc., a California Corporation, and D.R. Horton - Sacramento Inc., a California Corporation.

**ENVIRONMENTAL CONSIDERATIONS:**

On December 1, 1992, the City Council adopted Resolution No. 92-878 ratifying the Negative Declaration and approving the Mitigation Monitoring Plan for this project.

**POLICY CONSIDERATIONS:**

Pursuant to Sacramento City Code, Chapter 40.07.711, and Government Code Section 66458, the City Council may, by resolution, approve final maps. The map presented conforms to all the requirements of the Government Code and Title 40 of the City Code, applicable at the time of conditional approval of the Tentative Map.

City Council  
Final Map and Subdivision Agreement for Laguna Vega North Phase 1 (P91-1252)  
May 4, 1999

**ESBD CONSIDERATIONS:**

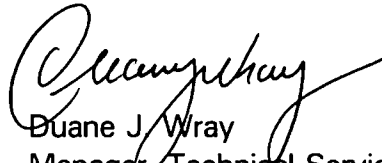
City Council adoption of the attached subdivision improvement agreement and resolution is not affected by City policy related to the ESBD Program.

Respectfully submitted,



Marty Hanneman, Manager  
Traffic Engineering and Development Services

Approved:



Duane J. Wray  
Manager, Technical Services Division

RECOMMENDATION APPROVED:



ROBERT P. THOMAS  
City Manager

Approved:



Michael Kashiwagi  
Director of Public Works

BR:dt  
s:projdel/councilP91-252cclt  
05.0499.1  
Attachment

APPROVED  
BY THE CITY COUNCIL

JUN 8 1999

OFFICE OF THE  
CITY CLERK

**RESOLUTION NO. 99-280**

ADOPTED BY THE SACRAMENTO CITY COUNCIL

ON DATE OF \_\_\_\_\_

**APPROVING FINAL MAP ENTITLED "LAGUNA VEGA NORTH PHASE 1"  
AND SUBDIVISION IMPROVEMENT AGREEMENT (P91-252)**

**WHEREAS, THE CITY COUNCIL OF THE CITY OF SACRAMENTO FINDS AND DETERMINES AS  
FOLLOWS:**

- A. The Final Map for Laguna Vega North Phase 1, located at the east side of Bruceville Road at Damascas Drive, with provisions for its design and improvement, is consistent with the Jacinto Community Plan Area . See Exhibit "A" for project location.
- B. The Final Map is in substantial compliance with the previously approved tentative map.

**NOW, THEREFORE, BE IT RESOLVED BY THE COUNCIL OF THE CITY OF SACRAMENTO AS  
FOLLOWS:**

- 1. The Final Map for this project is hereby approved subject to the execution by all parties of the Subdivision Improvement Agreement for that subdivision.
- 2. All offers of dedication shown on said map are hereby accepted subject to the improvement thereof required by the Subdivision Improvement Agreement.
- 3. The City Manager and City Clerk are authorized and directed to execute on behalf of the City of Sacramento that certain Subdivision Improvement Agreement between the City and Raymus Development and Sales, Inc., a California Corporation, and D.R. Horton - Sacramento Inc., a California Corporation to provide for the subdivision improvements required by the Subdivision Map Act and Title 40 (Subdivision Regulations) of the Sacramento City Code.

**FOR CITY CLERK USE ONLY**

RESOLUTION NO.: \_\_\_\_\_

DATE ADOPTED: \_\_\_\_\_

4. The City Clerk is authorized and directed to record the above-mentioned agreement in the official records of Sacramento County.

\_\_\_\_\_  
MAYOR

ATTEST:

\_\_\_\_\_  
CITY CLERK

S:\projdel\councilP91-252cclet  
05.0499.1

\_\_\_\_\_  
**FOR CITY CLERK USE ONLY**

RESOLUTION NO.: \_\_\_\_\_

DATE ADOPTED: \_\_\_\_\_



# PROJECT LOCATION

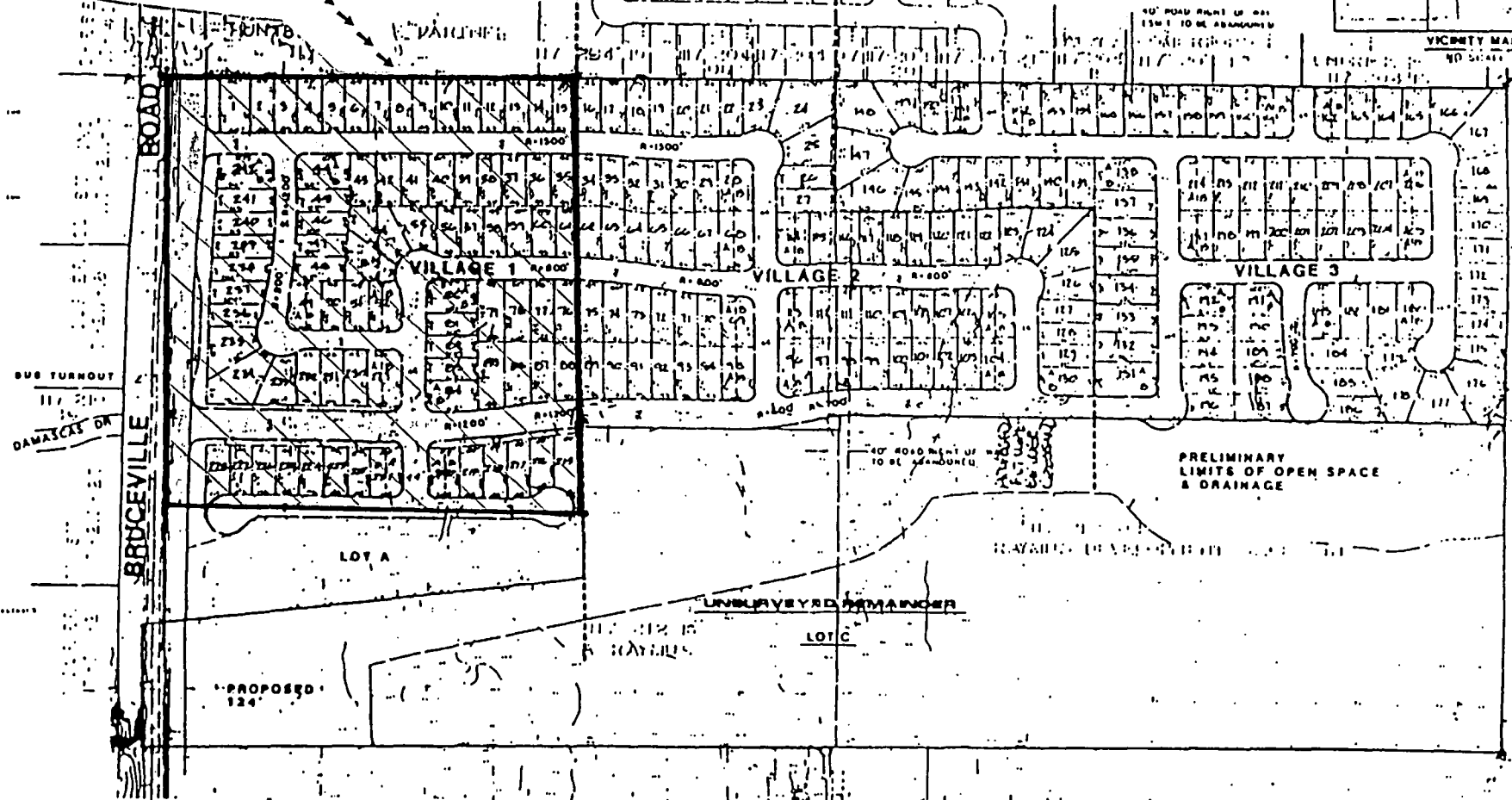
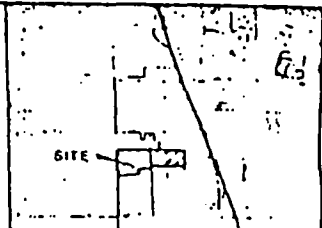


EXHIBIT "A"

- 1. ALL LOTS SHALL BE 1/4 AC OR MORE.
- 2. ALL LOTS SHALL BE 1/4 AC OR MORE.
- 3. ALL LOTS SHALL BE 1/4 AC OR MORE.
- 4. ALL LOTS SHALL BE 1/4 AC OR MORE.
- 5. ALL LOTS SHALL BE 1/4 AC OR MORE.
- 6. ALL LOTS SHALL BE 1/4 AC OR MORE.
- 7. ALL LOTS SHALL BE 1/4 AC OR MORE.
- 8. ALL LOTS SHALL BE 1/4 AC OR MORE.
- 9. ALL LOTS SHALL BE 1/4 AC OR MORE.
- 10. ALL LOTS SHALL BE 1/4 AC OR MORE.
- 11. ALL LOTS SHALL BE 1/4 AC OR MORE.
- 12. ALL LOTS SHALL BE 1/4 AC OR MORE.
- 13. ALL LOTS SHALL BE 1/4 AC OR MORE.
- 14. ALL LOTS SHALL BE 1/4 AC OR MORE.
- 15. ALL LOTS SHALL BE 1/4 AC OR MORE.
- 16. ALL LOTS SHALL BE 1/4 AC OR MORE.
- 17. ALL LOTS SHALL BE 1/4 AC OR MORE.
- 18. ALL LOTS SHALL BE 1/4 AC OR MORE.
- 19. ALL LOTS SHALL BE 1/4 AC OR MORE.
- 20. ALL LOTS SHALL BE 1/4 AC OR MORE.
- 21. ALL LOTS SHALL BE 1/4 AC OR MORE.
- 22. ALL LOTS SHALL BE 1/4 AC OR MORE.
- 23. ALL LOTS SHALL BE 1/4 AC OR MORE.
- 24. ALL LOTS SHALL BE 1/4 AC OR MORE.
- 25. ALL LOTS SHALL BE 1/4 AC OR MORE.
- 26. ALL LOTS SHALL BE 1/4 AC OR MORE.
- 27. ALL LOTS SHALL BE 1/4 AC OR MORE.
- 28. ALL LOTS SHALL BE 1/4 AC OR MORE.
- 29. ALL LOTS SHALL BE 1/4 AC OR MORE.
- 30. ALL LOTS SHALL BE 1/4 AC OR MORE.
- 31. ALL LOTS SHALL BE 1/4 AC OR MORE.
- 32. ALL LOTS SHALL BE 1/4 AC OR MORE.
- 33. ALL LOTS SHALL BE 1/4 AC OR MORE.
- 34. ALL LOTS SHALL BE 1/4 AC OR MORE.
- 35. ALL LOTS SHALL BE 1/4 AC OR MORE.
- 36. ALL LOTS SHALL BE 1/4 AC OR MORE.
- 37. ALL LOTS SHALL BE 1/4 AC OR MORE.
- 38. ALL LOTS SHALL BE 1/4 AC OR MORE.
- 39. ALL LOTS SHALL BE 1/4 AC OR MORE.
- 40. ALL LOTS SHALL BE 1/4 AC OR MORE.
- 41. ALL LOTS SHALL BE 1/4 AC OR MORE.
- 42. ALL LOTS SHALL BE 1/4 AC OR MORE.
- 43. ALL LOTS SHALL BE 1/4 AC OR MORE.
- 44. ALL LOTS SHALL BE 1/4 AC OR MORE.
- 45. ALL LOTS SHALL BE 1/4 AC OR MORE.
- 46. ALL LOTS SHALL BE 1/4 AC OR MORE.
- 47. ALL LOTS SHALL BE 1/4 AC OR MORE.
- 48. ALL LOTS SHALL BE 1/4 AC OR MORE.
- 49. ALL LOTS SHALL BE 1/4 AC OR MORE.
- 50. ALL LOTS SHALL BE 1/4 AC OR MORE.
- 51. ALL LOTS SHALL BE 1/4 AC OR MORE.
- 52. ALL LOTS SHALL BE 1/4 AC OR MORE.
- 53. ALL LOTS SHALL BE 1/4 AC OR MORE.
- 54. ALL LOTS SHALL BE 1/4 AC OR MORE.
- 55. ALL LOTS SHALL BE 1/4 AC OR MORE.
- 56. ALL LOTS SHALL BE 1/4 AC OR MORE.
- 57. ALL LOTS SHALL BE 1/4 AC OR MORE.
- 58. ALL LOTS SHALL BE 1/4 AC OR MORE.
- 59. ALL LOTS SHALL BE 1/4 AC OR MORE.
- 60. ALL LOTS SHALL BE 1/4 AC OR MORE.
- 61. ALL LOTS SHALL BE 1/4 AC OR MORE.
- 62. ALL LOTS SHALL BE 1/4 AC OR MORE.
- 63. ALL LOTS SHALL BE 1/4 AC OR MORE.
- 64. ALL LOTS SHALL BE 1/4 AC OR MORE.
- 65. ALL LOTS SHALL BE 1/4 AC OR MORE.
- 66. ALL LOTS SHALL BE 1/4 AC OR MORE.
- 67. ALL LOTS SHALL BE 1/4 AC OR MORE.
- 68. ALL LOTS SHALL BE 1/4 AC OR MORE.
- 69. ALL LOTS SHALL BE 1/4 AC OR MORE.
- 70. ALL LOTS SHALL BE 1/4 AC OR MORE.
- 71. ALL LOTS SHALL BE 1/4 AC OR MORE.
- 72. ALL LOTS SHALL BE 1/4 AC OR MORE.
- 73. ALL LOTS SHALL BE 1/4 AC OR MORE.
- 74. ALL LOTS SHALL BE 1/4 AC OR MORE.
- 75. ALL LOTS SHALL BE 1/4 AC OR MORE.
- 76. ALL LOTS SHALL BE 1/4 AC OR MORE.
- 77. ALL LOTS SHALL BE 1/4 AC OR MORE.
- 78. ALL LOTS SHALL BE 1/4 AC OR MORE.
- 79. ALL LOTS SHALL BE 1/4 AC OR MORE.
- 80. ALL LOTS SHALL BE 1/4 AC OR MORE.
- 81. ALL LOTS SHALL BE 1/4 AC OR MORE.
- 82. ALL LOTS SHALL BE 1/4 AC OR MORE.
- 83. ALL LOTS SHALL BE 1/4 AC OR MORE.
- 84. ALL LOTS SHALL BE 1/4 AC OR MORE.
- 85. ALL LOTS SHALL BE 1/4 AC OR MORE.
- 86. ALL LOTS SHALL BE 1/4 AC OR MORE.
- 87. ALL LOTS SHALL BE 1/4 AC OR MORE.
- 88. ALL LOTS SHALL BE 1/4 AC OR MORE.
- 89. ALL LOTS SHALL BE 1/4 AC OR MORE.
- 90. ALL LOTS SHALL BE 1/4 AC OR MORE.
- 91. ALL LOTS SHALL BE 1/4 AC OR MORE.
- 92. ALL LOTS SHALL BE 1/4 AC OR MORE.
- 93. ALL LOTS SHALL BE 1/4 AC OR MORE.
- 94. ALL LOTS SHALL BE 1/4 AC OR MORE.
- 95. ALL LOTS SHALL BE 1/4 AC OR MORE.
- 96. ALL LOTS SHALL BE 1/4 AC OR MORE.
- 97. ALL LOTS SHALL BE 1/4 AC OR MORE.
- 98. ALL LOTS SHALL BE 1/4 AC OR MORE.
- 99. ALL LOTS SHALL BE 1/4 AC OR MORE.
- 100. ALL LOTS SHALL BE 1/4 AC OR MORE.

REVISED 4/11/92  
REVISED 3/18/92

|             |       |      |           |            |          |   |  |      |
|-------------|-------|------|-----------|------------|----------|---|--|------|
| DESCRIPTION | APPRO | DATE | SCALE     | BENCH MARK | COMPUTED | MORTON & PITALO, INC.<br>CIVIL ENGINEERING - PLANNING - SURVEYING | TENTATIVE SUBDIVISION MAP<br>LAGUNA VEGA NORTH | DATE |
|             |       |      | 1" = 100' |            | DRAWN    |   |  | CITY |
|             |       |      |           |            |          |   | SACRAMENTO                                     |      |