

RESOLUTION NO. 2004-249

ADOPTED BY THE SACRAMENTO CITY COUNCIL

ON DATE OF APR 08 2004

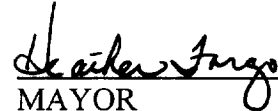
RESOLUTION AMENDING THE AIRPORT/MEADOWVIEW COMMUNITY PLAN LAND USE MAP TO REDESIGNATE 1.12± ACRES FROM RESIDENTIAL(11-21 DU/NA) AND RESIDENTIAL (11-29 DU/NA) TO COMMERCIAL, LOCATED AT THE NORTHEAST CORNER OF AMHERST STREET AND MEADOWVIEW ROAD, SACRAMENTO, CALIFORNIA.
(APN: 048-0250-005 & 006)
(P01-005)

WHEREAS, the City council conducted a Public Hearing on the above date concerning the above plan amendment and based on documentary and oral evidence submitted at the public hearing, the Council hereby finds:

1. The proposed land use amendment is compatible with the surrounding land uses;
2. The subject site is suitable for commercial development; and
3. The proposal is consistent with the policies of the Airport/Meadowview Community Plan and the General Plan.

NOW, THEREFORE BE IT RESOLVED by the City Council of the City of Sacramento that:

The property as described on the attached Exhibit 1 in the City of Sacramento is hereby redesignated on the Airport Meadowview Community Plan land use map from 1.12± acres from Residential (11-21 du/na) and Residential (11-29 du/na) to Commercial (APNs: 048-0250-005 & 006).


MAYOR

ATTEST:


CITY CLERK

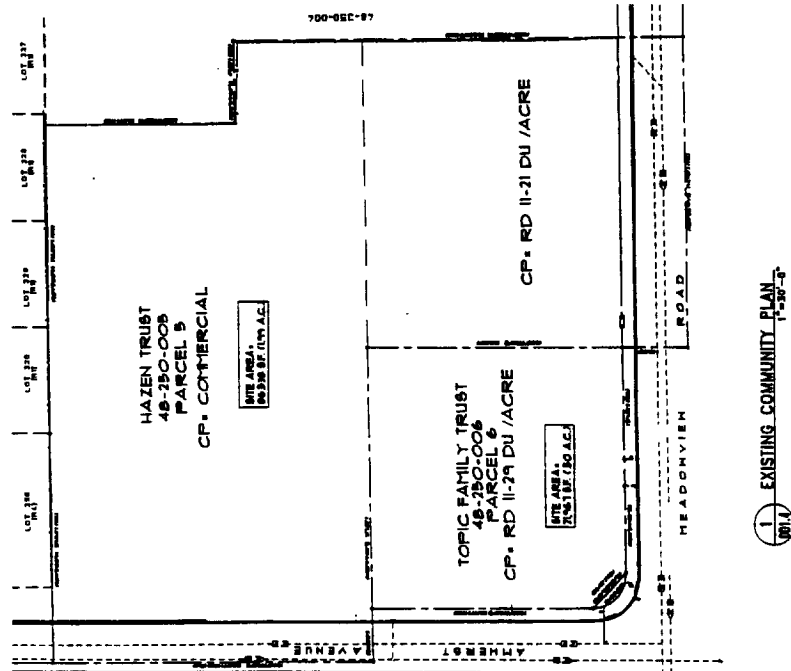
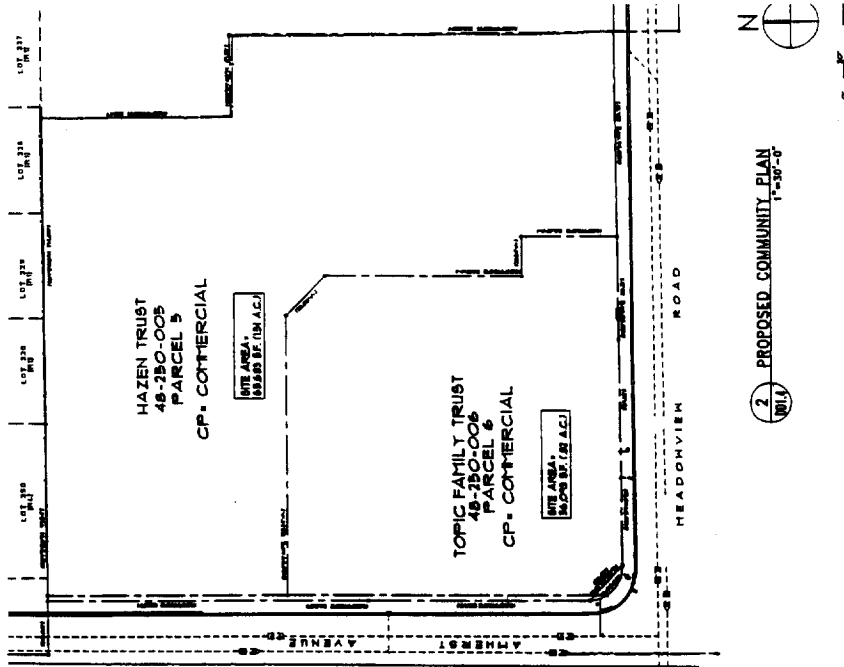
P01-005

FOR CITY CLERK USE ONLY

RESOLUTION NO.: 2004-249

DATE ADOPTED: APR 08 2004

EXHIBIT 1 - Community Plan Amendment



FOR CITY CLERK USE ONLY

RESOLUTION NO.: 2004-249

DATE ADOPTED: APR 08 2004