

This set of plans and specifications must be kept on the job at all times and it is unlawful to make any changes or alterations from the same without written permission from the Sacramento Sign Section. The approval of this plan and specification SHALL NOT be held to permit or approve the violation of any City Ordinance or State Law.

Bank of America



All electrical work must be U.L. labeled or be of equivalent standards, N.E.C. Sec. 90.6 and comply with chapter 14, Div. 2 of Sacramento Sign Section 14.1.

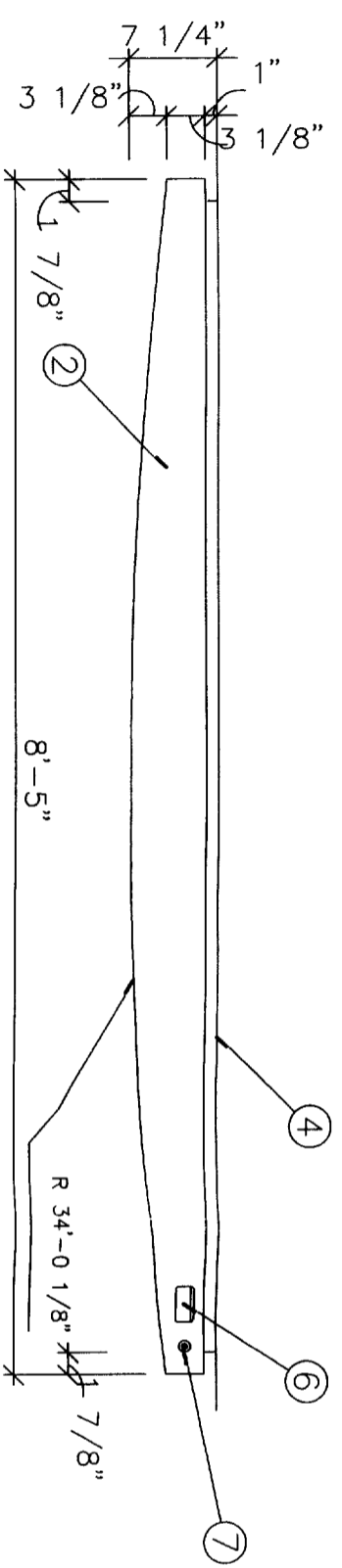
AS DESIGN INTENDED
 SUBJECT TO FIELD INSPECTIONS

SRO/RS

ELEVATION

FILE COPY

Date	11-18-99	Project:	VALLEY MACK PLAZA	Salesman:	Ken Hannon	This is an original unpublished drawing created by William Ayers Signs. It is submitted for your personal use in conjunction with a project being planned for you by William Ayers Signs, and shall not be reproduced, used by or disclosed to any firm or corporation for any purpose whatsoever without written permission.	Drawing Number	T007855
Scale	NTS	6360 Mack Road	Sacramento, CA 95823	Customer Approval:	X		Date	Sheet 1 of 2
Artist	EMF							



① TOP VIEW

SCALE: 3/4"=1'-0"

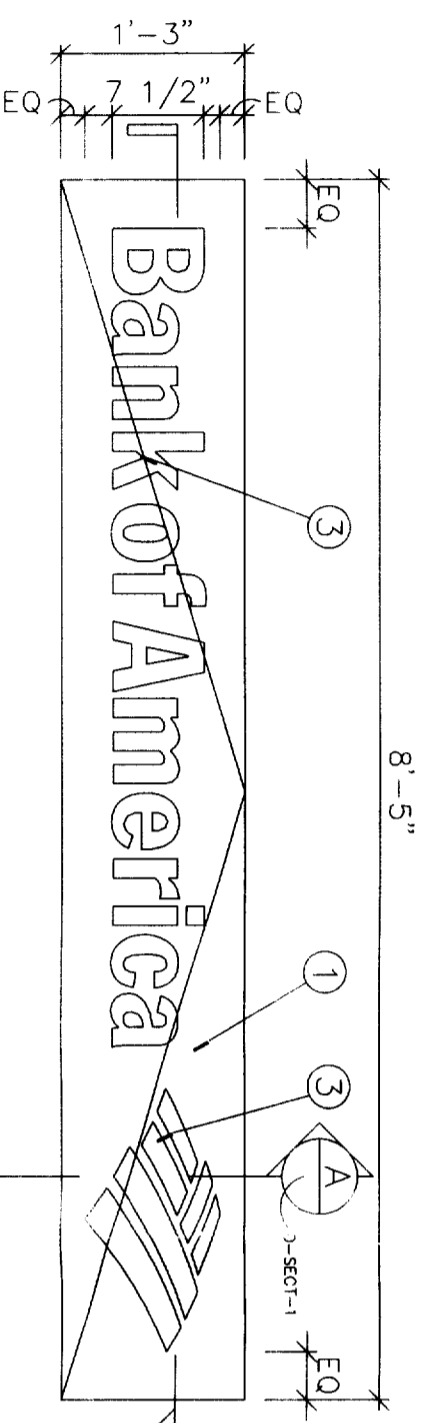
- NOTES:
- .125" ROUTED ALUM. SIGN FACE. ROLL TO RADIUS SHOWN. PAINT FINISH CHAMPAGNE METALLIC. SEMI-GLOSS FINISH. WELD TO .125" ALUM. FILLER PIECES AT SIDES TOP AND BOTTOM.
 - .125" ALUM. FILLER. FORM AS SHOWN. PAINT FINISH CHAMPAGNE METALLIC. SEMI-GLOSS FINISH.
 - .75" CLEAR ACRYLIC PUSH THRU LETTERS AND GRAPHIC. ROUT BACK BACKGROUND .625". FIRST SURFACE DECORATE LETTERS AND BLUE FIELD OF SYMBOL WITH BLUE FILM. FIRST SURFACE DECORATE "STRIPES" IN SYMBOL W/ RED FILM. USE ARTWORK SUPPLIED BY OWNER. SECOND SURFACE DECORATE ENTIRE SHEET WITH 3M DIFFUSER FILM #3635-70 WHITE.
 - .125" ALUM. FORM AS SHOWN. PAINT FINISH CHAMPAGNE METALLIC. GLOSS FINISH.
 - SUPPLY SUPPORT ROD TO HOLD HINGED FACE OPEN DURING MAINTANACE.
 - PLACE PRODUCT LABEL HERE. SEE SHEET PL-1 FOR DETAILS.
 - U.L. APPROVED EMERGENCY CUTOFF SWITCH.

GENERAL NOTES:

ALL PAINT TO BE TWO-PART POLYURETHANE. CHAMPAGNE METALLIC PAINT TO BE EITHER AKZO-NOBEL #BNK 250, MATTHEWS # MP 21314R 6295, OR DUPONT IMRON # PENDING. MATTHEWS RED # MP 10351R 6595, MATTHEWS BLUE # MP 21670R 6595, MATTHEWS WHITE # MP 21668R 6595. BLUE FILM TO BE 3M #VQ-8425, RED FILM TO BE #VQ-5962 DIFFUSER FILM TO BE 3M #3635-70 (VT-5964) PAINT INTERIORS OF ALL CABINET WHITE, SATIN FINISH. USE ONLY MANUFACTURER APPROVED PAINT PRODUCTS. NOTE: COLOR FILM TO BE MATCHED IN 3M #3632 SERIES FILM.

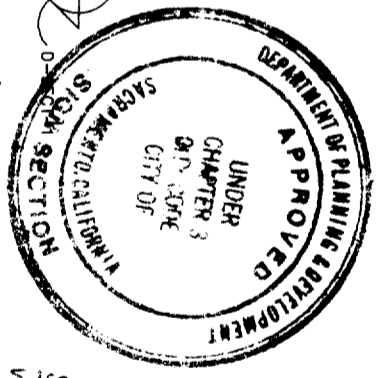
NOTE: FINAL SIZING FOR ALL STRUCTURAL MEMBERS (i.e. COLUMNS, MATCH PLATES, CONNECTION BOLTS, ANCHOR BOLTS, FOUNDATIONS, AND REINFORCEMENT) TO BE SIZED BY A LICENSED ENGINEER TO MEET OR EXCEED ALL APPLICABLE LOCAL, STATE, AND FEDERAL CODES.

NOTE: FABRICATOR IS RESPONSIBLE FOR THE PREVENTION OF ANY LIGHT LEAKS.



② D2 / ILLUMINATED HORIZONTAL WALL SIGN

SCALE: 3/4"=1'-0"



This set of plans and specifications must be kept on the job at all times and it is unlawful to make any changes or alterations from the same without written permission from the Sacramento City Engineer. The approval of this plan and specification shall not be held to permit of any change in violation of any City Ordinance or State Law.

All electrical work must be installed or be of equivalent standards N.E.C. Sec. 90.6 and comply with Chapter 14 Div. 2 of Sacramento City Code EQUIPMENT MUST BE USED AS DESIGN INTENT.

③ SIDE VIEW

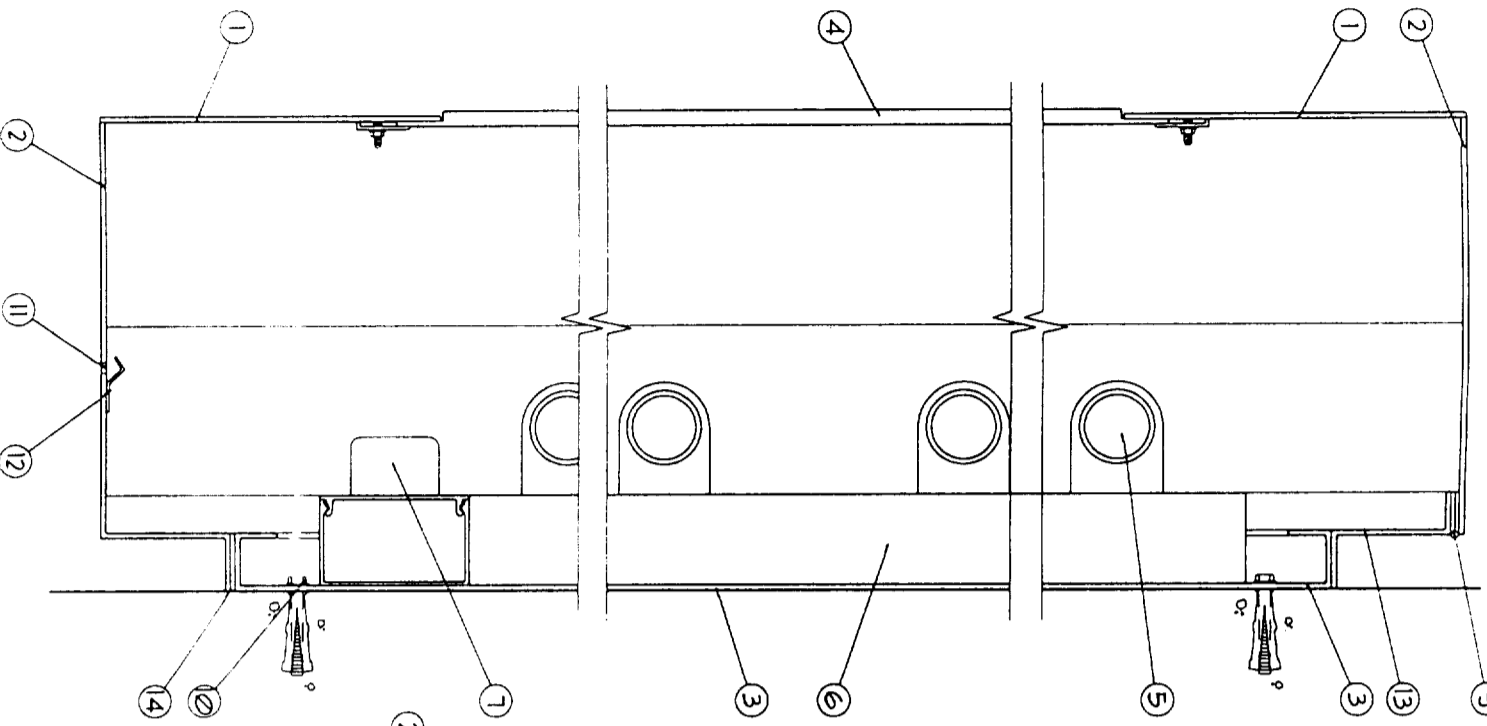
SCALE: 3/4"=1'-0"



William Ayers Signs

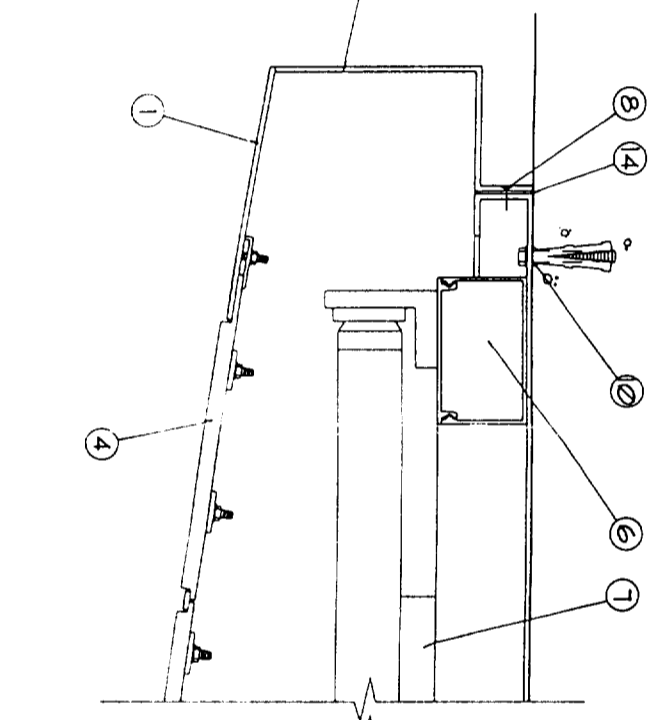
A Division of Ayers Corporation

Date	11-18-99	Project:	VALLEY MACK PLAZA AT 6360 MACK ROAD SACRAMENTO, CA 95823
Scale	3/4"=1'-0"	Salesman:	KEN HANNON
Artist	EMF	Customer Approval:	Date
This is an original unpublished drawing created by William Ayers Signs. It is submitted for your personal use in conjunction with a project being planned for you by William Ayers Signs, and shall not be reproduced, used by or disclosed to any firm or corporation for any purpose whatsoever without written permission.		Drawing Number	
		T007855	
		Sheet 2 Of 2	



VERTICAL SECTION

SCALE 3/16" = 1"



HORIZONTAL SECTION

SCALE 3/16" = 1"

- NOTES:
1. 1/2" ROUTED ALUMINUM SIGN FACE. ROLL TO FORT RADIUS SHOWN. PAINT FINISH CHAMPAGNE METALLIC SEMI-GLOSS FINISH. FILLET WELD ON INTERIOR TO FILLER PIECE. NOTE: EXTEND SIGN FACE PAST FILLER EDGE. WELD THEN GRIND SMOOTH AND EVEN WITH FILLER EDGE FROM OUTSIDE.
 2. 1/2" ALUM. FILLER. BRAKE FORT AS SHOWN. PAINT FINISH CHAMPAGNE METALLIC. SEMI-GLOSS FINISH.
 3. 1/2" ALUM. PAN-FORMED BACKING SHEET. PAINT FINISH ALL EXPOSED SURFACES CHAMPAGNE METALLIC. SEMI-GLOSS FINISH. PAINT INTERIOR SURFACE (AND ALL INTERIOR SURFACES) WHITE GLOSS FINISH. TO HELP WITH LIGHT DISTRIBUTION.
 4. 1/2" CLEAR ACRYLIC PUSH THRU LETTERS AND GRAPHIC. ROUT BACK BACKGROUND 6/32" FROM FACE TO RELIEVE STRESS ON SIGN FACE. INDIVIDUALLY CLIP LETTERS AND SYMBOL ONTO SECOND SURFACE OF SIGN FACE TOP AND BOTTOM. LETTER COUNTERS TO BE ADHERED BACK INTO ROUTED LETTER WITH 3M VAB TAPE 4923. 1" WIDE AND STRUCTURAL SILICONE. FIRST SURFACE DECORATE SIGNATURE AND BLUE FIELD OF SYMBOL WITH 3M BLUE FILT. FIRST SURFACE DECORATE SYMBOL STRIPES WITH 3M RED FILT. SECOND SURFACE DECORATE ENTIRE SHEET WITH 3M DIFFUSER FILT 9635-10 WHITE.
 5. 1-1/2" HO DAYLIGHT FLUORESCENT BULBS. 8" O.C. VERTICAL OVERLAP AT CENTER AS REQ'D TO PROVIDE EVEN ILLUMINATION WITHOUT HOT SPOTS OR SHADOWS.
 6. VERTICAL RACEWAY EXTRUSION WITH SNAP COVER ATTACH TO PAN-FORMED BACKING SHEET. PAINT FINISH WHITE. GLOSS FINISH.
 7. BALLAST TO BE MANUFACTURER'S APPROVED EQ. (800) MA 100 VOL 15, 60HZ OR APPROVED EQ. TWO REQUIRED. MOUNT TO BOTTOM HORIZONTAL RACEWAY.
 8. SECURE HINGED SIGN FACE WITH COUNTERSUNK FLAT HEAD STAINLESS STEEL SCREWS.
 9. STAINLESS STEEL PLANO HINGE CONTINUOUS ACROSS TOP.
 10. ATTACH SIGN TO EXISTING WALL WITH APPROPRIATE MULTI FASTENING SYSTEM AS REQUIRED.
 11. PROVIDE WEEP HOLES AS REQUIRED TO MEET UL SPECIFICATIONS.
 12. 263' ALUM. LIGHT Baffles TO MINIMIZE LIGHT LEAKS FROM WEEP HOLES.
 13. 1/2" ALUM. FORT AS SHOWN. PAINT FINISH CHAMPAGNE METALLIC. SEMI-GLOSS FINISH. WELD TO BACKING SHEET.
 14. PROVIDE SILICONE RUBBER GASKETS AT ALL CLOSE SURFACES TO PREVENT LIGHT LEAKS 263' THICKNESS.

GENERAL NOTES

ALL PAINT TO BE TWO-PART POLYURETHANE CHAMPAGNE METALLIC PAINT TO BE EITHER AKZO-NOBEL, BANK 75, MATTHEWS #MP 2134R 6295, OR DUPONT, IMRON #PENDING.

MATTHEWS RED #MP 1033R 6535, MATTHEWS BLUE #MP 216, TOR 6595, MATTHEWS WHITE #MP 216, 68R 6535, BLUE FILT TO BE 3M VQ-5962 (VT-5964).

DIFFUSER FILT TO BE 3M 9635-10 (VT-5964).

PAINT INTERIORS OF ALL CABINET WHITE, SATIN FINISH. USE ONLY MANUFACTURER APPROVED PAINT PRODUCTS.

NOTE: COLOR FILT TO BE MATCHED IN 3M 9632 SERIES.

NOTE: FINAL SIZING FOR ALL STRUCTURAL MEMBERS (COLUMNS, TRUSS PLATES, CONNECTION BOLTS, ANCHOR BOLTS, FOUNDATIONS, AND REINFORCEMENT) TO BE CHECKED BY A LICENSED ENGINEER TO MEET OR EXCEED ALL APPLICABLE LOCAL, STATE, AND FEDERAL CODES.

NOTE: FABRICATOR IS RESPONSIBLE FOR THE PREVENTION OF ANY LIGHT LEAKS.

1-19-00
 The approval of an Electrical Work
 is subject to field inspection.
 Provide disconnect at sign

These documents are for design intent and shall be used only as a guide to produce the finished sizes, appearances and functions shown. Nothing contained in these documents shall be construed as a design for any engineered element. The fabricator/contractor shall be responsible for all

structural, electrical, mechanical and foundation engineering. These documents were not produced under an architectural services agreement. These drawings are part of an original unpublished design by Monigle Associates, Inc. The detailing and information contained on these pages shall not be reproduced, copied or utilized except for the specific project for which they were created, without previous written authorization from Monigle Associates, Inc.

Date: 11.24.98
 Revisions: 01.07.99
 Released To: Bank of America

Drawn By: jst
 Job Number: 7611
 Page Number: D-Section 1

Monigle Associates, Inc.
 150 Adams Street
 Denver, Colorado 80206
 January 09, 1999 4:32:45 pm
 Drawing: D-SECTION 1 (SHA)

MONIGLE ASSOCIATES