

# RESOLUTION NO. 83-027

ADOPTED BY THE REDEVELOPMENT AGENCY OF THE CITY OF SACRAMENTO  
ON DATE OF

March 29, 1983

RESOLUTION APPROVING PRELIMINARY PLANS  
FOR THE ENTERPRISE HOTEL  
OLD SACRAMENTO PARCEL NO. 26

BE IT RESOLVED BY THE REDEVELOPMENT AGENCY OF THE  
CITY OF SACRAMENTO:

Section 1. The Preliminary Plans for the rehabilita-  
tion and restoration of the Enterprise Hotel (912-916 2nd Street),  
Old Sacramento Parcel No. 26, attached as Exhibit A, are hereby  
approved, subject to the incorporation of the comments and  
corrections as noted by the Museum and History Division.

  
CHAIRMAN

ATTEST:

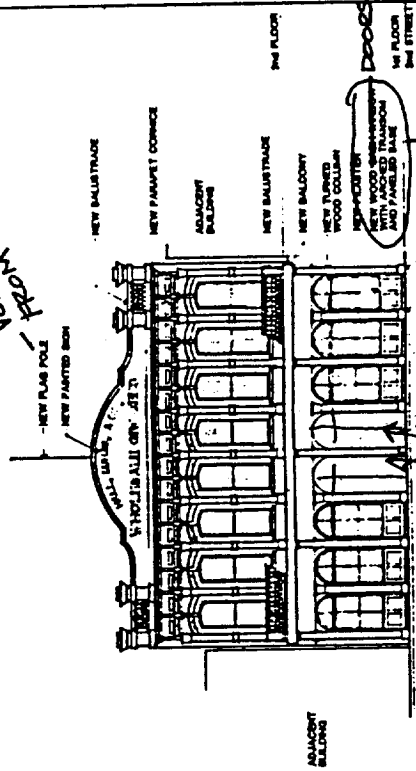
  
ASSISTANT SECRETARY

RESOLUTION No. 83-027  
MAR 29 1983

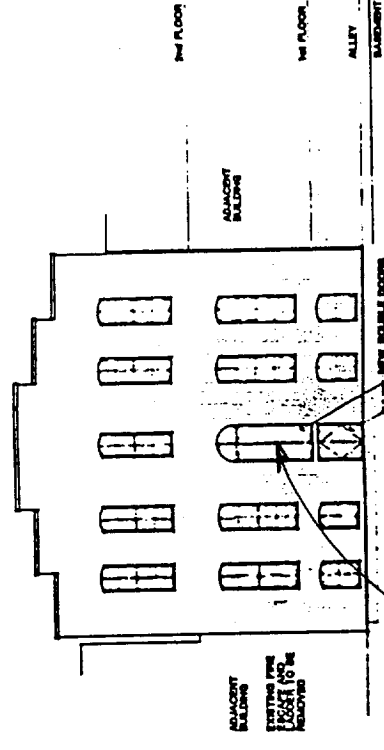
HALL, LUHRS & CO.  
 812-818 2nd Street  
 Sacramento, CA

NO. 811/1/83  
 DATE 3/9/83  
 SHEET 1

VERIFY HEIGHT OF FLAGPOLE FROM HISTORIC PHOTOS



EAST ELEVATION SECOND STREET  
 THERE MUST BE A SET OF HISTORIC DOORS; THEY MAY BE LEFT OPEN DURING OPERATING HOURS



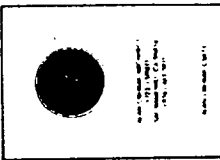
WEST ELEVATION  
 NEED MORE INFORMATION ON DOOR FINISHES BEFORE FINAL APPROVAL OF DOOR CONFIGURATION.

AREA SUMMARY

ITEM	AREA	PERMITS AREA	TOTAL PERMITS AREA
Building	1,200 S.F.	1,170 S.F.	1,170 S.F.
First Floor	6,000 S.F.	5,770 S.F.	5,770 S.F.
Second Floor	1,200 S.F.	1,000 S.F.	1,000 S.F.
TOTAL	8,400 S.F.	7,940 S.F.	7,940 S.F.

RESOLUTION No. 83-027

MAR 29 1983



City of Sacramento  
Department of Public Works  
Engineering Division

Contract No.

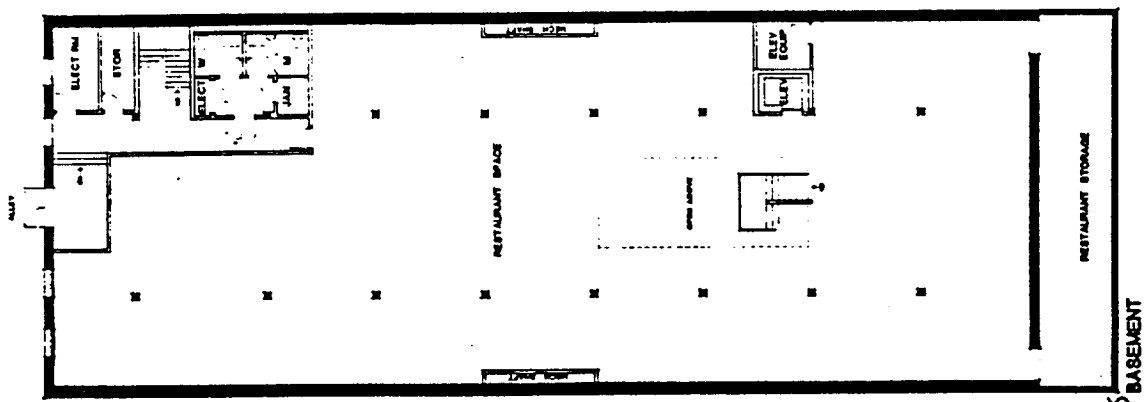
HALL, LUHRS & CO.  
PARCEL 28  
912-916 2nd Street  
SACRAMENTO, CA

Project No.

Date  
2/11/83

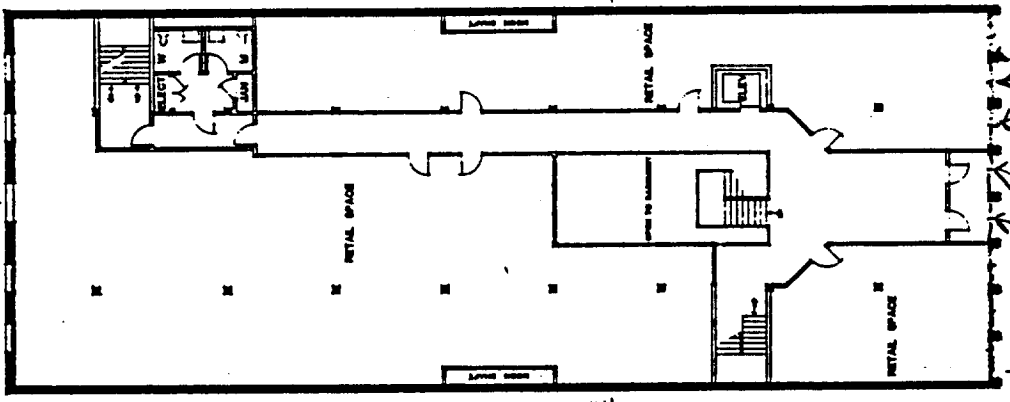
Sheet No.  
0279

2  
3



BASEMENT

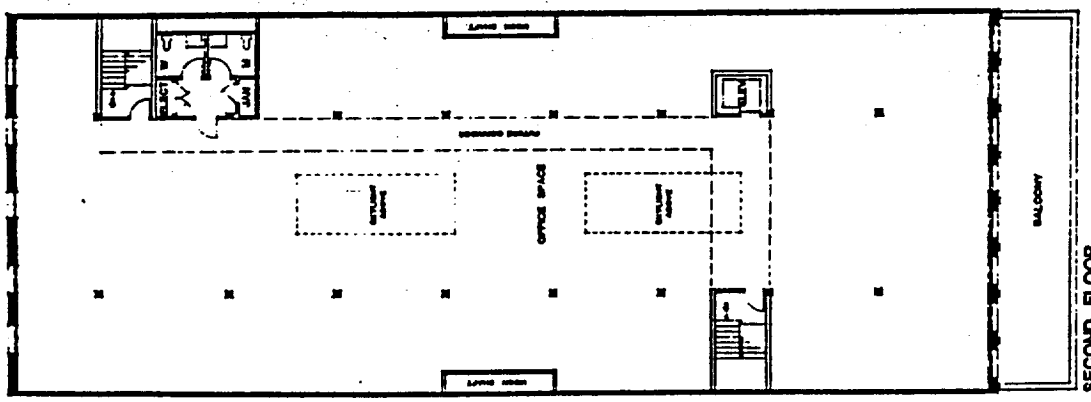
A →



FIRST FLOOR

HISTORICAL DOORS  
DOORS TO BE REPLACED  
ON ALL FIRST FLOOR OPENINGS

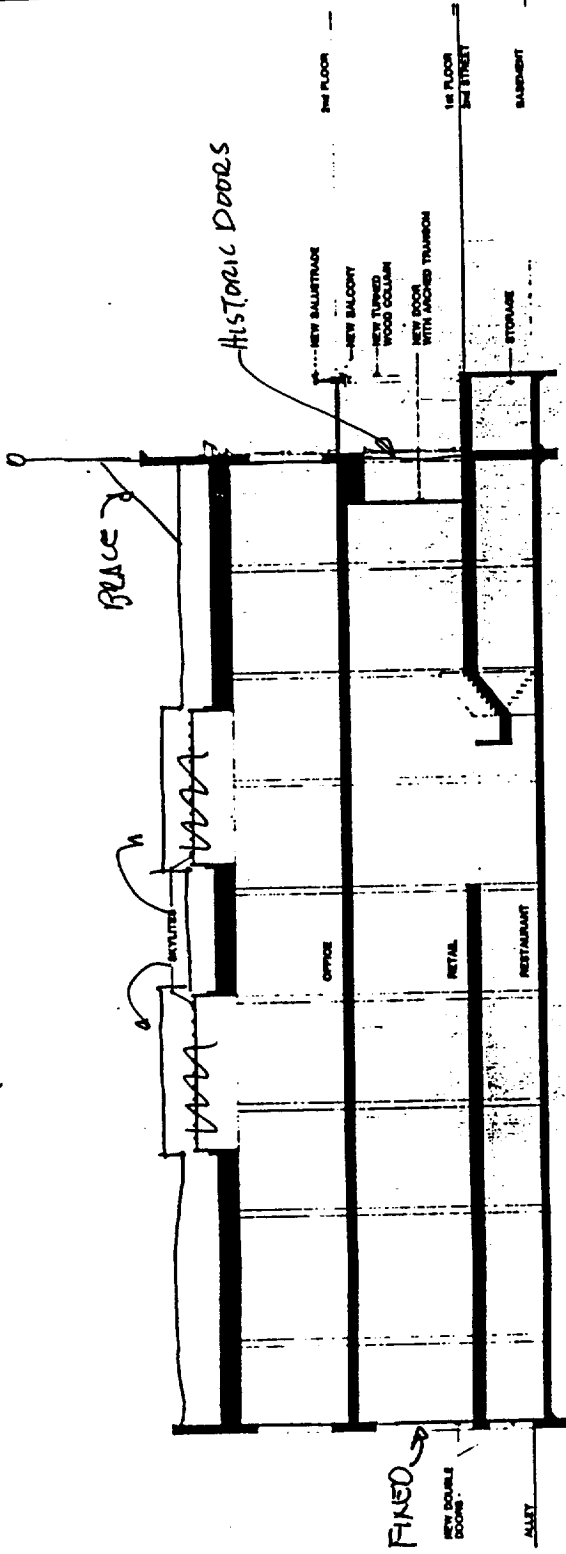
A →



SECOND FLOOR

FLOOR PLANS

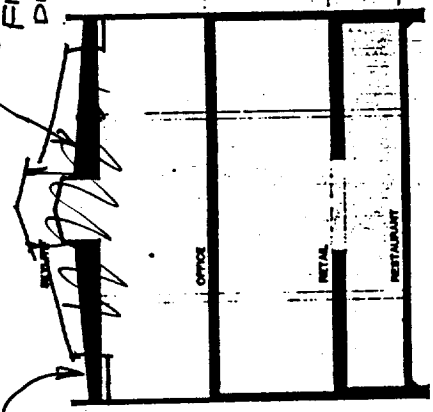
RESOLUTION NO. 83-027  
MAR 29 1983



SECTION A

SHEET METAL  
 EXISTING ROOF IS  
 HIGHER THAN SHOWN  
 (EXISTING ROOF IS VISIBLE  
 FROM STREET - VERIFY  
 DIMENSIONS.)

LOCATE MECHANICAL  
 EQUIPMENT BELOW  
 PARAPET - (ONE SOLUTION  
 IS TO LOCATE EQUIP. IN A  
 TROUGH - SEE MECHANICS  
 EXCHANGING BLDG #31)



SECTION B