



## REPORT TO COUNCIL City of Sacramento

915 I Street, Sacramento, CA 95814-2604  
www.CityofSacramento.org

Consent  
September 9, 2008

Honorable Mayor and  
Members of the City Council

**Title:** Award Contract: Pocket Canal Channel Lining - Phase 2 (W14003600)

**Location/Council District:** Pocket Canal from Portuguese Park to the Flowerwood Way Bridge/Council District 7

**Recommendation:** Adopt a **Resolution:** 1) approving the contract plans and specifications for the Pocket Canal Channel Lining Project - Phase 2; and 2) awarding the contract to Solo Landscaping for an amount not to exceed \$111,125.

**Contact:** David L. Brent, Engineering Manager, 808-1420; Rick Batha, Supervising Engineer, 808-1448.

**Presenters:** Not applicable.

**Department:** Utilities

**Division:** Engineering Services

**Organization No:** 3332

### Description/Analysis

**Issue:** In the past Pocket Canal had been the cause for complaints from local residents due to odor from decaying algae growth produced by stagnant water conditions during the summer months. One measure that was taken in order to minimize the odor problems was raising the water level in the canal during the summer months. This lowered the water temperature in the canal thereby reducing the algae growth rate. However the higher water elevation exceeds the height of the existing concrete lining of the canal. This has resulted in excessive erosion of the upper unlined banks of the canal that ultimately could damage the structural integrity of the canal, bridges, and adjacent bike paths. Consistent with the criteria set forth in the City of Sacramento's Capital Improvement Program and the Department of Utilities' Asset Management Program, the functional and structural integrity of the canal has reached a condition that requires repair to prevent further damage to the canal and its associated features. The project will raise the height of the concrete lining to eliminate future erosion and also add additional landscaping to enhance the aesthetics of the canal.



**Policy Considerations:** The requested action is in conformance with City Code Section 3.60, Articles I and III, which provide for the award of competitively bid contracts to the lowest responsible bidder.

**Environmental Considerations:**

**California Environmental Quality Act (CEQA):** The Department of Developmental Services, Planning Division has reviewed the project and determined that it is exempt from the provisions of the California Environmental Quality Act (CEQA) under Class 1 and 2 and Section numbers 15301(b), (d), and (c) of the CEQA Guidelines, as the project consists of the repair of existing drainage facilities, the restoration of deteriorating or damaged structures to meet current standards of public health and safety, and the replacement or reconstruction of existing utility systems and/or facilities involving negligible or no expansion of capacity.

**Sustainability Considerations:** The project is consistent with the City's Sustainability Master Plan by working to provide exceptional flood protection, employ new approaches to soften the edges between the natural and built environments, and by reducing the use of herbicides which are three of the City's sustainability targets.


**Other:** Not applicable.


**Commission/Committee Action:** Not applicable.

**Rationale for Recommendation:** After the plans and specifications were completed by Engineering Services the project was formally advertised to solicit public bids. On August 20, 2008 the City Clerk opened five (5) bids. The low bidder was Solo Landscaping and the bid was determined to be responsive. Staff recommends the contract be awarded to Solo Landscaping for an amount not to exceed \$111,125.

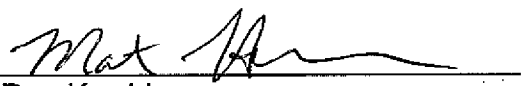
**Financial Considerations:** The Solo Landscaping bid is for an amount not to exceed \$111,125. The total estimated project cost including design, construction, inspection, and contingency is \$120,000. The project (W14003600, Fund 6011) has a budget of \$138,625 and an unobligated balance of \$121,402 which is sufficient for award and project completion.

**Emerging Small Business Development (ESBD):** This project included a participation goal of 20% for emerging and small business enterprises (ESBE's) as required by Ordinance 99-007 and Resolution 99-055 relating to ESBD participation goals and policies adopted by City Council On February 9, 1999. Solo Landscaping is an ESBE contractor and, as such, their bid exceeds the City's 20% participation goal.

Respectfully Submitted by:   
for David L. Brent  
Engineering Manager

Approved by:   
Marty Hannemen  
Assistant City Manager  
Interim Director of Utilities

Recommendation Approved:

  
for Ray Kerridge  
City Manager

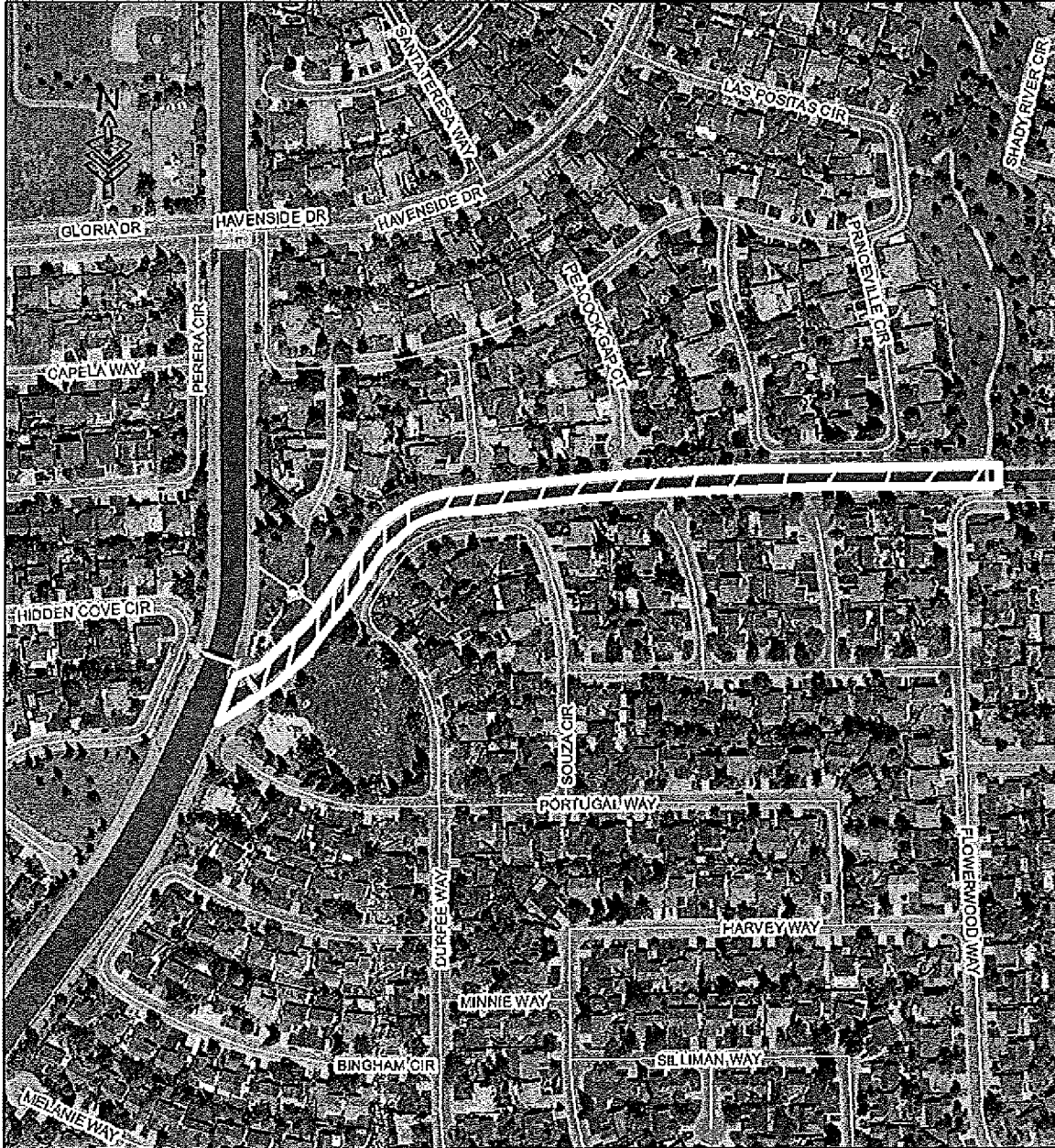
**Table of Contents:**

Report	pg. 1-3
<b>Attachments</b>	
1 Project Location Map	pg. 4
2 Background	pg. 5
3 Resolution	pg. 6

Attachment 1

Project Location Map

Pocket Canal Channel Lining - Phase 2



**Attachment 2****Background**

Pocket Canal is an extensive open drainage channel that transports storm water from approximately 2,000 acres in the Pocket area of the City. The canal is also an important aesthetic amenity to the surrounding neighborhoods. Operation of the canal has been modified to successfully eliminate excessive algae growth and odor problems that were being generated from the canal during the summer months. However, the modification of raising the water level in the canal has resulted in excessive erosion of the upper unlined banks of the canal that will ultimately damage the structural integrity of the canal, bridges, and adjacent bike paths. Utilities evaluated the banks of the entire canal and rated sections of the canal according to their need for repair. Phase 1 of the Pocket Canal Channel Lining Project was completed in 2004 and raised the concrete channel lining from Sump 132 upstream to Rush River Drive. Phase 2 will repair the canal from Portuguese Park to the Flowerwood Way pedestrian bridge.

The project was advertised and five (5) bids were received and opened on August 20, 2008. The bids are summarized below:

<b>Contractor</b>	<b>Bid Amount</b>
Solo Landscaping	\$111,125
United Shotcrete	\$137,600
MIB Enterprises	\$165,250
C & C Construction	\$198,535
Euro Style Management	\$198,700

**Attachment 3**

**RESOLUTION NO.**

Adopted by the Sacramento City Council

**AWARD CONTRACT FOR THE POCKET CANAL CHANNEL LINING PROJECT -  
PHASE 2 (W14003600)**

**BACKGROUND**

- A. The Pocket Canal is an extensive open drainage channel that transports storm water from approximately 2,000 acres in the Pocket area of the City. The canal requires repair to prevent further damage to the canal and its associated features. Phase 1 of the Pocket Canal Channel Lining Project was completed in 2004 and raised the concrete channel lining from Sump 132 upstream to Rush River Drive. Phase 2 will repair the canal from Portuguese Park to the Flowerwood Way pedestrian bridge.
- B. City staff prepared the plans and contract specifications for this project, and the project was advertised for bidding. Five bids were received on August 20, 2008. Solo Landscaping is the lowest responsive and responsible bidder.

**BASED ON THE FACTS SET FORTH IN THE BACKGROUND, THE CITY COUNCIL  
RESOLVES AS FOLLOWS:**

- Section 1. The contract plans and specifications for the Pocket Canal Channel Lining Project - Phase 2, (W14003600) are approved and the contract is awarded to Solo Landscaping for an amount not to exceed \$111,125.

