

City Planning Commission  
Sacramento, California

Members in Session:

SUBJECT: Review of the Negative Declaration for Proposed Discovery  
Park Stage and Seating Facility Under I-5 Freeway Bridge  
(M84-027)

### SUMMARY

The County of Sacramento Department of Parks and Recreation proposes to construct a large group picnic facility, including a stage and seating to accommodate 500 persons, under the Interstate 5 Freeway Bridge in Discovery Park (See Exhibit A). The State's CEQA Guidelines require the County to provide the City an opportunity to review and comment on the proposed project when the City has jurisdiction by law over resources affected by the project such as fire and police protection for example (Sec. 15073 b). City staff was informed of the proposed project during recent American River Parkway Plan Update Committee meetings. City staff requested an opportunity to review and comment on the project on April 11, 1984. The City received the County's Negative Declaration on May 23, 1984 in which the County's Recreation and Parks Commission planned to act on the document on May 24, (see Exhibit B). City staff requested the County Recreation and Parks Commission to continue the subject action to June 8, 1984 to provide the City Planning Commission an opportunity to consider the project and adequacy of the environmental documentation. The County recognizes the City's concerns and will take the proposed project under consideration on June 28, 1984. City staff believes that the proposed action, except for certain volley ball, horseshoe equipment, etc., may be inconsistent with the adopted Parkway Plan and should receive additional consideration in the Negative Declaration. Staff recommends that the City Planning Commission transmit this report, and any additional comments, to the County of Sacramento Recreation and Parks Commission for their information.

### BACKGROUND

The City of Sacramento Planning Division staff has reviewed the subject Negative Declaration for consistency with the Urban American River Parkway Preservation Act (AB 1522) and the American River Parkway Plan because the proposed project is within the boundaries of the American River Parkway.

The Parkway Plan provides the City of Sacramento policy guidance on existing and proposed land use decisions along the City's portion of the American River. Proposed projects that are not publicly owned within the City's jurisdiction of the American River Parkway are customarily reviewed according to Section 24 (American River) of the Comprehensive Zoning Ordinance of the City of Sacramento. Although the proposed action will be County owned and administered, and may provide certain "urgent unmet recreational needs", it raises questions as to whether the proposed large group picnic facility's stage and dance floor are consistent with AB1522 and the American River Parkway Plan; and if it is not, whether project implementation would require State action to amend the Public Resources Code relating to the American River.

Discovery Park is designated as Developed Recreation in the Parkway Plan and is intended to attract large groups of people that can be safely accommodated without significantly impacting the Parkway environment and adjacent properties. Recognizing this policy, the Planning staff submitted the following comments (See Exhibit C) on the proposed project to the County staff on May 8, 1984.

1. Consider the impact night lighting will have on Parkway and adjacent land uses.
2. Evaluate the cost and policy of providing public services (i.e., fire and police protection) for the proposed project recognizing the Parkway's operation program deficit.
3. Assess the impact amplified music and sound will have on Parkway and adjacent land uses. Staff anticipates amplification to occur due to I-5 traffic traveling above the proposed stage.
4. Consider potential parking and traffic impacts on Garden Highway and Jibboom Street.
5. Assess the impact that the proposed aesthetics may have on the Parkway and surrounding properties.
6. Evaluate the appropriate regulatory measures (i.e., hours of operation, security, maximum occupant load, etc.), should the County issue Group Picnic Conditional Use Permits to users of this project.

The City Fire and Police Department and Department of Community Services comments were received subsequent to City Planning's comment transmittal to County; their comments on the proposed facility are attached (See Exhibits D, E, and F).

The Negative Declaration does not address several issues which are discussed in the Initial Study for this proposal:

1. The Initial Study questioned whether certain features of this proposal were consistent with the intent and policies of the Parkway Plan: the elevated stage, concrete dance floor, and suspended fabric backdrop. The Study cited adopted plan policies to minimize man-made facilities, and to give preference to unstructured recreational pursuits that are enhanced by the river.
2. The Initial Study noted the lack of information regarding potential uses of the elevated stage and dance floor. Due to the stage's location under the freeway structure, the Study noted that background freeway noise may generate requests for amplified music systems which could be considered inappropriate.
3. The Initial Study noted that the existing parking facilities were developed for existing recreational uses within Discovery Park, and the proposed stage and dance floor may generate the need for additional parking facilities. As a mitigation measure, the Initial Study recommended the provision of adequate parking for this facility.

The staff believes that the Negative Declaration should be amended to address these issues. As the project description does not mention any provisions for lighting for night-time use, it is assumed that this facility will operate only during the day.

#### RECOMMENDATION

Staff recommends that this report, and any additional comments, be transmitted to the County of Sacramento Recreation and Parks Commission for the County's information in assessing the adequacy of the Negative Declaration for the proposed Discovery Park large group picnic facility.

Respectfully submitted,

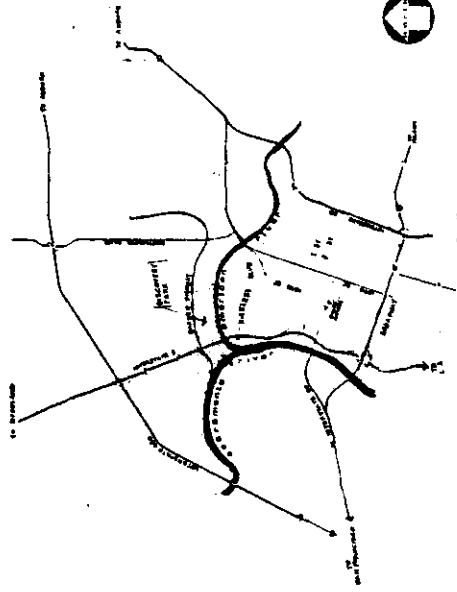
  
Clif Carstens  
Senior Planner

CC : SD:mm/wp4b

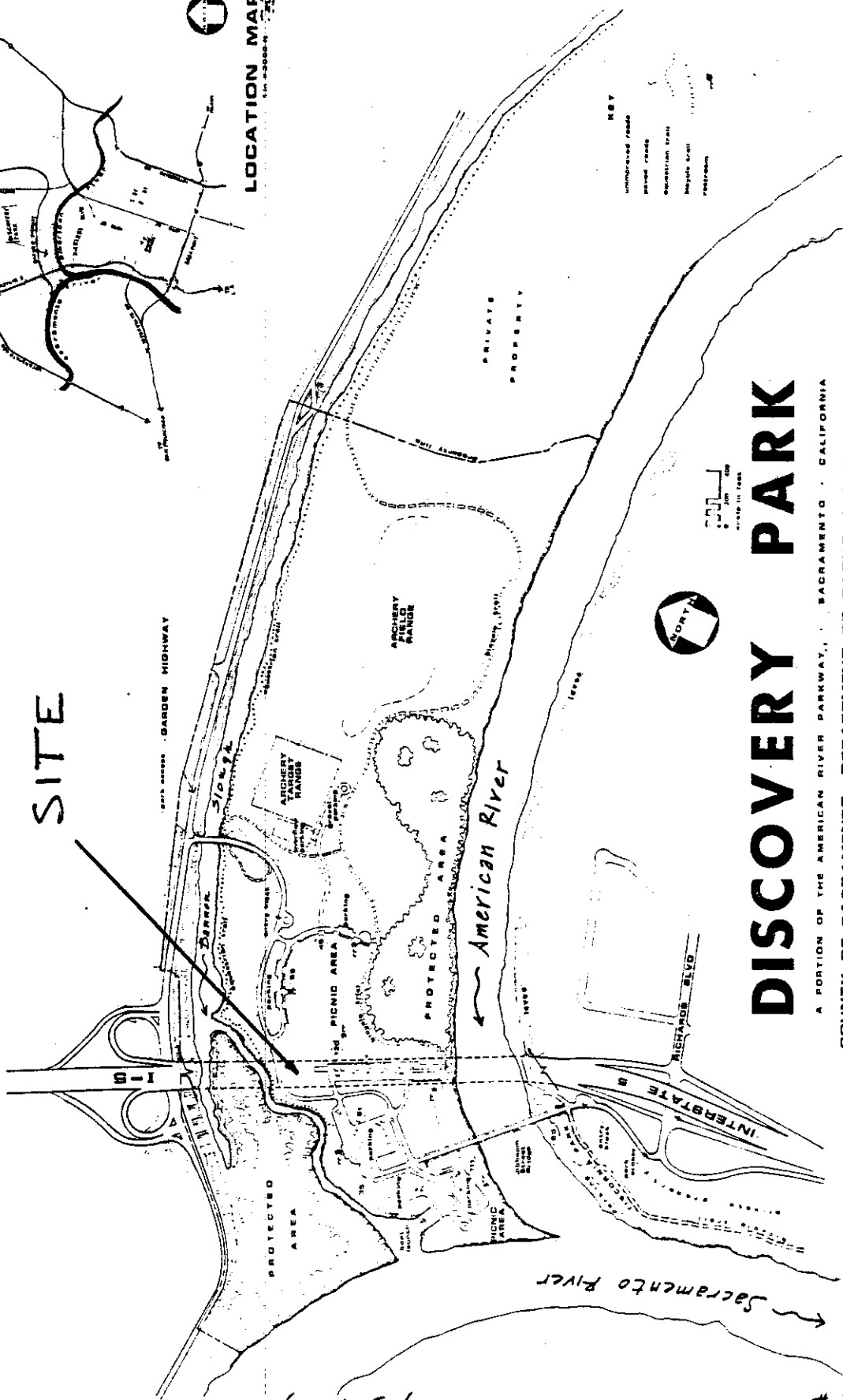
EXHIBIT A



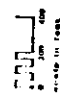
LOCATION MAP  
1:50,000



SITE



- KEY
- Unimproved roads
  - Improved roads
  - Highway right-of-way
  - Highway easement
  - Highway bridge
  - Highway interchange



# DISCOVERY PARK

A PORTION OF THE AMERICAN RIVER PARKWAY, SACRAMENTO, CALIFORNIA  
COUNTY OF SACRAMENTO, DEPARTMENT OF PARKS AND RECREATION

JULY 20, 1981

M94-027

6-14-84

#2

## NEGATIVE DECLARATION

Pursuant to Division 6, Title 14, Chapter 3, Article 6, Sections 15070 and 15071 of the California Administrative Code and pursuant to the Procedures for Preparation and Processing of Environmental Impact Reports adopted by the County of Sacramento pursuant to Sacramento County Ordinance No. SCC-116, the Environmental Coordinator of Sacramento County, State of California, does prepare, make, declare, publish, and cause to be filed with the County Clerk of Sacramento County, State of California, this Negative Declaration re: The Project described as follows:

## 1. Title and Short Description of Project:

DISCOVERY PARK GROUP PICNIC FACILITIES

The proposed project consists of the construction of group picnic facilities at Discovery Park. The proposed work, as described by the Parks and Recreation Department, consists of the following: "clearing and grading the site, construction of a large picnic facility, small picnic shelters, sprinkler modifications, reseeding, play equipment, horseshoe courts, volleyball post and nets, baseball backstop, drinking fountains and relocation of trash enclosure and driveway."

Plans provided by the Parks and Recreation Department indicate that the large group picnic facility would include picnic tables with capacity for 500 people, barbecues, sinks, drinking fountains, an elevated stage with a rear concrete wall, ramp and stairs, concrete dance floor, colored canvas-type fabric coverings hung from the I-5 freeway bridge, two entrance structures, water and electrical service.

## 2. Location of Project and Assessor's Parcel Number: The project is located beneath and slightly east of the I-5 bridge over Discovery Park within the American River Parkway and in the city limits of Sacramento. Discovery Park is on the right bank of the American River and the left bank of the Sacramento River at the confluence of these rivers.

APN: 274-050-13 and 15

## 3. Project Proponent: Sacramento County, Department of Parks and Recreation

## 4. Said project will not have a significant effect on the environment for the following reasons:

- a) It will not have the potential to degrade the quality of the environment, substantially reduce the habitat of a fish or wildlife species, cause a fish or wildlife population to drop below self sustaining levels, threaten to eliminate a plant or animal community, reduce the number or restrict the range of a rare or endangered plant or animal or eliminate important examples of the major periods of California history or prehistory.
- b) It will not have the potential to achieve short-term, to the disadvantage of long-term, environmental goals.
- c) It will not have impacts which are individually limited, but cumulatively considerable.
- d) It will not have environmental effects which will cause substantial adverse effects on human beings, either directly or indirectly.

## 5. As a result thereof, the preparation of an environmental impact report pursuant to the Environmental Quality Act (Division 13 of the Public Resources Code of the State of California) is not required.

- 6. The attached Initial Study has been performed by the Sacramento County Environmental Impact Section in support of this Negative Declaration. Further information may be obtained by contacting the Section at 827 Seventh Street, Room 101, Sacramento, California, 95814, or phone (916) 440-7914.

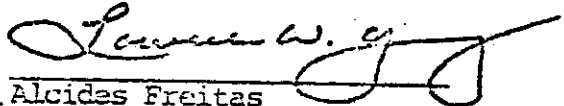
**ENDORSED:**

MAY 16 1984

JOYCE RUSSELL SMITH, CLERK  
By M. ANDREWS, Deputy

AF/11/12/5/83

Environmental Coordinator of  
Sacramento County, State of  
California

By   
for Alcides Freitas  
Environmental Coordinator

ENVIRONMENTAL IMPACT SECTION  
INITIAL STUDY

NAME: DISCOVERY PARK GROUP PICNIC  
FACILITIES

ASSESSOR'S PARCEL NO.: 274-050-13 & 15

CONTROL NO.: PR-84-046

LOCATION: The project is located  
beneath and slightly east  
of the I-5 bridge over  
Discovery Park within the  
American River Parkway and  
in the city limits of Sac-  
ramento. Discovery Park is  
on the right bank of the  
American River and the left  
bank of the Sacramento  
River at the confluence of  
these rivers.

APPLICANT:

County of Sacramento  
Department of Parks and Recreation  
3711 Branch Center Road  
Sacramento, CA 95827

I. PROJECT DESCRIPTION:

The proposed project consists of the construction of group picnic facilities at Discovery Park. The proposed work, as described by the Parks and Recreation Department, consists of the following:

"clearing and grading the site, construction of a large picnic facility, small picnic shelters, sprinkler modifications, reseeding, play equipment, horseshoe courts, volleyball post and nets, baseball backstop, drinking fountains and relocation of trash enclosure and driveway."

Plans provided by the Parks and Recreation Department indicate that the large group picnic facility would include picnic tables with capacity for 500 people, barbecues, sinks, drinking fountains, an elevated stage with a rear concrete wall, ramp and stairs, concrete dance floor, colored canvas-type fabric coverings hung from the I-5 freeway bridge, two entrance structures, water and electrical service.

M84-027

Page 1

6-14-84

42

II. ENVIRONMENTAL SETTING:

The project site is located within Discovery Park at the downstream terminus of a regional public recreation area (American River Parkway). Discovery Park is northeasterly of the confluence of the Sacramento and American Rivers, and is within the Designated Floodways of both rivers. Bannon Slough flows in an east to west direction across the north portion of the park. Discovery Park is a largely developed recreation area containing access roads, parking lots, irrigated turf, boat launching ramp, restrooms, drinking fountains, irrigation system, security lighting, picnic tables, barbecues, signs, post and cable fencing, landscaping and other facilities.

III. ENVIRONMENTAL EFFECTS:

See Initial Study Checklist attached to the Negative Declaration and the following discussion.

Consistency with the American River Parkway Plan: The primary policy document governing land use within the Parkway is the "ARP Plan", which was adopted by the City and County of Sacramento in 1975-76. The map included in that Plan designates the site for developed recreation use.

Various policies and statements contained in that Plan which may have relevance to the proposed project are as follows:

- Page 1: "Man-made improvements shall be limited to those needed for the public's enjoyment, compatible with the natural environment..."
- "Efforts to maintain or improve the environmental quality of the Parkway shall be the first priority management responsibility."
- Page 3: "Facility design shall be simple and reflect aesthetic considerations consistent with the surrounding environment."
- Page 8: "To provide appropriate access and facilities so present and future generations can enjoy the amenities and resources of the Parkway."
- Page 9: "This varied setting allows designation of several land use categories, providing opportunity for a range of recreational activities and developments. However, despite this range, the Parkway concept emphasizes retention of the natural qualities of open space."
- Page 10: "The Parkway is regarded as a regional recreational facility, providing space and resources to meet the needs of the entire

M84-027



County population. Attention has been paid to the wide variety of recreational facilities and activities demanded by this population and to their relative availability Countywide. It is a basic concept of this Plan that the Parkway shall meet to the extent possible the demand for unstructured recreational pursuits in a natural environment which are not normally provided by other County recreational facilities. Those pursuits that are enhanced by the river and surrounding lands are preferred... Future recreation demand may require development of additional facilities. However, the need must be clearly justified."

Page 15: "Developed Recreation"

The Developed Recreation designation is applied to areas able to withstand heavy use. These areas may be developed with turf, barbecue facilities, boat launch facilities, and so on. Developed Recreation Areas are expected to attract the largest number of users. If too many people are attracted, it may be necessary at times to close or restrict the use of certain areas to avoid overcrowding, allow recovery and restoration, or to prevent permanent damage. To minimize the necessity for such actions, activities may be restricted to certain areas or the number of users in a particular area may be limited. The intent is to provide the recreational opportunities for all users who can be safely accommodated, but not at the expense of destruction of any portion of the Parkway or the enjoyment of the users."

Page 17: "The guiding principle is that man-made facilities shall be kept to a minimum and that permitted activities shall be fitted to appropriate areas."

Page 18: "The design of roads, signs, structures and furniture should be simple and unobtrusive, and should be compatible with the Parkway setting in which they are placed."

Page 19: "It is the intent of this plan that, intrusions upon the Parkway, particularly visual but including others such as noise...shall be mitigated and corrected as much as possible. Similarly, land use and development within the Parkway shall be planned to mitigate potential detrimental impacts upon existing and future uses. Future development of all vacant land surrounding the Parkway, as well as alterations to existing uses, shall be evaluated for its appropriateness and compatibility with the Parkway."

Page 29: "Land use and facility development must be consistent with the policies adopted."

M84-027

Page 3

6-14-84

#2

Page 38: "...the Department (of Parks and Recreation) will organize various programs and events...consistent with Parkway facilities and purpose... Studies to determine demand, need and compatibility (of planned facilities and services) will be carried out by the Department. Results of such studies will be made a part of the narrative portion of the Land Use and Development Plans reviewed by the Recreation and Park Commission."

The proposed project includes not only the normal group picnic facilities such as clusters of picnic tables, barbecues, drinking fountains and trash receptacles, but also the following additional structures:

1. An elevated stage with a rear concrete wall, ramp and stairs.
2. Concrete dance floor.
3. Colored canvas-type fabric coverings hung from the I-5 freeway bridge.
4. Two entrance structures constructed of concrete columns and wood.
5. Sinks (in conjunction with the barbecues).
6. Electrical utility service.
7. Volleyball areas.
8. Horseshoe area.

The APP Plan is not precisely and specifically clear in indicating whether the proposed project is consistent with the intent and policies of the Plan. Thus, a degree of reasonable interpretation will be required of decision-making bodies during their review of the project.

Certain features of the project represent normal group picnic facilities and are therefore assumed to be consistent with the Plan. Such facilities include clusters of picnic tables, barbecues, drinking fountains and trash receptacles. Also, the proposed volleyball and horseshoe facilities are probably consistent with the intent and policies of the Plan. However, the consistency of several features of the proposed project are questionable. Such features include the proposed elevated stage, dance floor, colored canvas-type fabric coverings, entrance structures and the baseball backstop. These facilities appear to be out of character with the Parkway, could create questionable aesthetic/visual impacts upon other Parkway users, may generate requests for amplified music and other types of noise adversely affecting other users, and may create traffic congestion/parking capacity problems (thereby requiring expansion of paved

parking areas). Also, games such as softball can easily be played without a backstop, and in fact the backstop would likely be an obstruction and impediment to other types of multiple-use open play area activities that could otherwise occur.

The magnitude of adverse impact would be partially mitigated by the proposed project location, i.e. beneath the I-5 freeway bridge. This specific area is considered less environmentally sensitive than most other locations within the Parkway. However, in addition to the direct site-specific impacts which would occur, approval of the project may serve as a precedent to help justify similar facilities in other more sensitive areas of the Parkway. And with the precedent established, it may be increasingly difficult for decision-makers to deny such future requests.

Visual/Aesthetic Impact: The primary visual/aesthetic impact would result from structures included in the large group picnic area. Of particular concern are the elevated stage with a rear concrete wall, structures with colored canvas-type coverings hanging from the I-5 bridge and entrance structures to the proposed group picnic area as well as the proposed baseball backstop.

The visual/aesthetic impact would result from both the physical structures themselves and the colors of facilities involved in the project. A representative of the Parks and Recreation Department has indicated that the originally proposed bright colors of some of the facilities have been revised such that only earth tone colors would be used.

Noise: Although little information is available regarding potential uses of the proposed stage and dance floor, it is conceivable that requests may be submitted to Sacramento County to allow amplified, music and/or other substantial noise generators at the site. While some observers may welcome such noise as a ruffle to the overhead freeway noise, other observers may consider it to be an inappropriate and excessive noise intrusion into the Parkway.

Parking: Over the years, Discovery Park has been planned and developed in phases with recreation use areas and facilities developed concurrently with the necessary parking capacity to serve those uses. Such improvements are based on the Land Use and Development Plan for Discovery Park, the latest version of which was adopted by the Board of Supervisors on August 21, 1979. That Plan indicates all of the existing uses (i.e. access road, parking beneath the I-5 bridge, turfed picnic area east of I-5, relocated bike trail, etc.) in the project vicinity. However, the proposed large group picnic facility was not included in that Plan. Thus, presumably, the parking area beneath the I-5 bridge is intended to serve existing group and family picnic uses on both sides of I-5, open play area uses east of I-5, major bike trail staging area, bank fishing, hiking and

M84-027

other activities for which it is presently used. Therefore, during moderately high to peak use periods including the spring striped bass fishing period a major portion of the parking capacity beneath the I-5 bridge would be needed for other uses and would not be available to serve the proposed group picnic facility. Thus, it appears that a substantial amount of additional parking area would be required to adequately serve the proposed project. Such parking would likely have to be provided by constructing a paved parking lot on the north side of the park entrance road east of I-5 or by converting some of the recently landscaped picnic area east of I-5 into paved parking area.

The Parks and Recreation Department has indicated that 130 parking spaces presently exist beneath the I-5 bridge. Based upon an estimate of 2.5+ persons per vehicle, a capacity event at the group picnic facility would require parking for 200+ vehicles. Therefore, even if it is assumed that the parking lot beneath the I-5 bridge would serve only the group picnic facility (which it clearly would not), then additional parking in other areas would still be necessary for near capacity and capacity events at the proposed group picnic facility. The Parks and Recreation Department has indicated that some additional parking would be available in other parking lots east of I-5 (which presently serve other uses), and that an unpaved overflow parking area is available north of the park entrance road and east of I-5. Another option to provide additional parking would be to convert more of the recently landscaped picnic area east of I-5 into a paved parking lot.

#### IV. ENVIRONMENTAL MITIGATION MEASURES:

- A) Add the planting of a substantial number of native trees and shrubs to the project, particularly in the parking lot planter islands beneath I-5 which are presently full of weeds.
- B) If the proposed project is approved, provide adequate parking for it.

#### V. COMPATIBILITY WITH EXISTING PLANS AND ZONING:

- A) General Plan: The County General Plan Land Use Map indicates the property for recreational use.
- B) Community Plan: The South Natomas Community Plan (City of Sacramento) Land Use Map indicates the property for parks - open space use.
- C) American River Parkway Plan: The ARP Plan designates the site for developed recreation use.

M84-027

6-14-84  
Page 6

#2

D) Discovery Park Land Use and Development Plan: The Discovery Park Land Use and Development Plan designates the project site for family and group picnicking, parking and bicycle staging.

E) Zoning: The subject property is presently zoned ARP-F (American River Parkway - Flood).

IV. This Initial Study has been prepared by Alcides Freitas, Lowell Young, Doug Peterson and Linda Quinday of the Sacramento County Environmental Impact Section staff.

INITIAL STUDY CHECKLIST

SACRAMENTO COUNTY  
ENVIRONMENTAL IMPACT SECTION

CONTROL NO. PR-84-646

Could/Would the project:

YES  
MAYBE  
NO

	YES	MAYBE	NO	
1) significantly affect Regional air quality?			X	
2) significantly affect local air quality?			X	Minor periodic increase in local vehicular emission and minor periodic increased human exposure to free way related pollutants.
3) contribute to the removal of significant amount of prime agricultural land from agricultural production?			X	
4) create the potential for property damage following completion of the project due to existing or altered soil and/or slope conditions?			X	The project would create a potential for flood damage to proposed improvements; however, such damage would be largely unrelated to soil and/or slope conditions.
5) be adversely affected by other geologic or seismic hazards?			X	
6) cause erosion or siltation resulting in severe water quality impacts or damage to adjacent properties?			X	However, the proposed facilities would be subject to periodic siltation problems during high flow periods.
7) have substantial effect on the supply or consumption of a mineral resource?			X	
8) significantly affect ground or surface water supply or quality?			X	
9) substantial affect, or be affected by flooding?	X			The project site is located within the Designated Floodway of the American and Sacramento Rivers, and would be periodically inundated by high flows.
10) adversely affect populations of unique, rare or endangered plants or animals, or their habitat?			X	
11) significantly affect resident or migratory wildlife or their habitat?			X	
12) affect or result in the removal of critical habitat, such as riparian and wetland plant associations?			X	
13) affect or result in the removal of prominent, heritage, or landmark trees, or otherwise aesthetically important plant forms?			X	
14) affect sites of archaeological or historical importance?			X	The project area is not located within the boundary of any known archaeological site.

M84-027

6-14-84

#2

	YES	MAYBE	NO	
15) be in conflict with adopted General, Community, or specific plans of Sacramento County?			X	Some of the proposed facilities may conflict with adopted City and County policies as contained in the American River Parkway Plan.
16) conflict with adopted plans of agencies or jurisdictions other than Sacramento County?			X	
17) require major modification of, or adversely affect, public facilities?		X		Some observers may consider the proposed project to be a major modification of existing recreation facilities at Discovery Park.
18) have a substantial effect upon transportation facilities?			X	Minor periodic increase in local traffic.
19) have a substantial effect on energy demands?			X	Incremental increase in local energy consumption.
20) substantially affect the quantity of open space in an area, or severely and adversely change the visual character of the project site?		X		Some observers may consider the visual impact of the project to be adverse.
21) generate average or peak noise levels that would seriously affect the health or general well-being of any nearby people?		X		Noise generated by use of the proposed facilities generate nuisance impacts on more passive uses of Parkway.
22) with existing average or peak noise levels at the project site seriously affect the health or general well-being of any nearby people?		X		See preceding comment.
23) cause significant shifts in employment or income characteristics of the community?			X	
24) have a substantial and demonstrable negative aesthetic affect?		X		Possibly to some observers; see comments for items 6, 20 and 21.
25) breach published national, state, or local standards relating to solid waste or litter control?			X	Trash receptacles would be provided and maintained.
26) induce substantial growth or concentration of population?			X	
27) displace a large number of people, or disrupt or divide an established community?			X	
28) involve a risk of an explosion or the release of hazardous substances in the event of an accident or upset conditions?			X	
29) involve possible interference with an emergency response plan or an emergency evacuation plan?			X	
30) result in creation of any health hazard or potential health hazard, or expose people to potential health hazards?			X	

M84-027

6-14-84

#2



CITY OF SACRAMENTO

EXHIBIT C

CITY PLANNING DEPARTMENT

927 TENTH STREET  
SUITE 300

SACRAMENTO, CA 95814  
TELEPHONE (916) 448-5604

MARTY VAN DUYN  
PLANNING DIRECTOR

May 8, 1984

Mr. Walt Ueda, Chief  
Administration and Planning  
County of Sacramento  
Department of Parks and  
Recreation  
3711 Branch Center Road  
Sacramento, CA 95827

SUBJECT: County of Sacramento Department of Parks and Recreation  
Proposed Discovery Park Stage and Seating Facility Under  
I-5 Freeway Bridge

Dear Walt:

The City of Sacramento Planning Division staff has reviewed the subject project for consistency with the Urban American River Parkway Preservation Act (AB1522) and the American River Parkway Plan. The project is proposed as a "large group picnic facility" and includes an outdoor stage, dance floor, and seating to accommodate approximately 500 persons under the northerly portion of the I-5 bridge in Discovery Park within the American River Parkway. Evidently, the County wishes to implement the proposal prior to the Board of Supervisor's ratification of the updated American River Parkway Plan which is currently being drafted. However, City staff believes that the proposed action, except the play apparatus, etc., may be inconsistent with the Parkway Plan and should receive additional consideration.

The Parkway Plan provides the City of Sacramento policy guidance on existing and proposed land use decisions along the City's portion of the American River. Proposed projects that are not publicly owned within the City's jurisdiction of the American River Parkway are customarily reviewed according to Section 24 (American River) of the Comprehensive Zoning Ordinance of the City of Sacramento. Although the proposed action will be publicly owned and may provide certain "urgent unmet recreational needs", it raises questions as to whether the proposed large group picnic facility's stage and dance floor are consistent with AB1522 and the American River Parkway Plan; and if it is not, whether project implementation would require State action to amend the Public Resources Code relating to the American River.

M84-027

6-14-84

#2



Discovery Park is designated as Developed Recreation in the Parkway Plan and is intended to attract large groups of people that can be safely accommodated without significantly impacting the Parkway environment and adjacent properties. Recognizing this policy, staff submits the following comments on the proposed project:

1. Consider the impact night lighting will have on Parkway and adjacent land uses.
2. Evaluate the cost and policy of providing public services (i.e., fire and police protection) for the proposed project recognizing the Parkway's operation program deficit.
3. Assess the impact amplified music and sound will have on Parkway and adjacent land uses. Staff anticipates amplification to occur due to I-5 traffic traveling above the proposed stage.
4. Consider potential parking and traffic impacts on Garden Highway and Jibboom Street.
5. Assess the impact that the proposed aesthetics may have on the Parkway and surrounding properties.
6. Evaluate the appropriate regulatory measures (i.e., hours of operation, security, maximum occupant load, etc.), should the County issue Group Picnic Conditional Use Permits to users of this project.

City Planning staff is concerned that implementation of an intensive use within the Parkway could depart significantly from the existing Parkway policy and, therefore, respectfully requests the County's careful consideration of the above comments. In addition, recognize that the Plan Update Committee is currently attempting to develop policy that will reduce and perhaps eliminate existing non-compatible land uses within the Parkway. Approval of the subject proposal may significantly disrupt the Plan update and set a major precedent which could affect existing and proposed land use controls in other parts of the Parkway. An informal consultation with other affected City departments concluded that no other City agencies were informed on the proposed facility. The Planning Division has distributed the proposed project to other City departments for review and comment. Planning is submitting its comments prior to coordinating all City comments, to provide an early City Planning response for the County's consideration. Please notify the City Planning Division of any further developments on this project.

M84-027

6-14-84

#2

May 8, 1984  
Mr. Walt Ueda  
Page 3

If you have any questions concerning this matter, please call me  
at (916) 419-5604.

Thank you,

*Steve Dee*

Steve Dee  
Assistant Planner

SD:lr

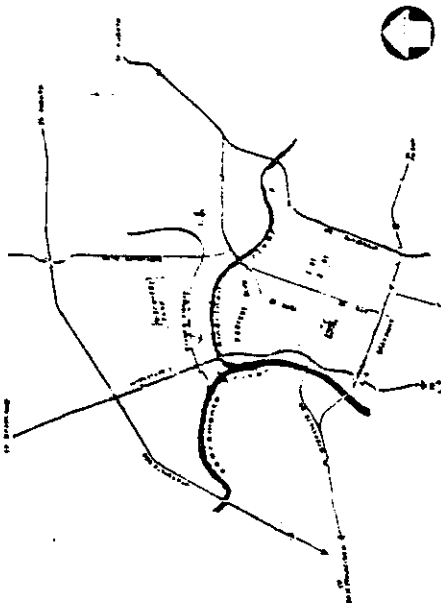
Attachment

cc: Erling Linggi, Assistant Director, City Community Services  
Jim Barclay, City Police Department  
Dennis Loheit, City Fire Department

1184-027

6-14-84

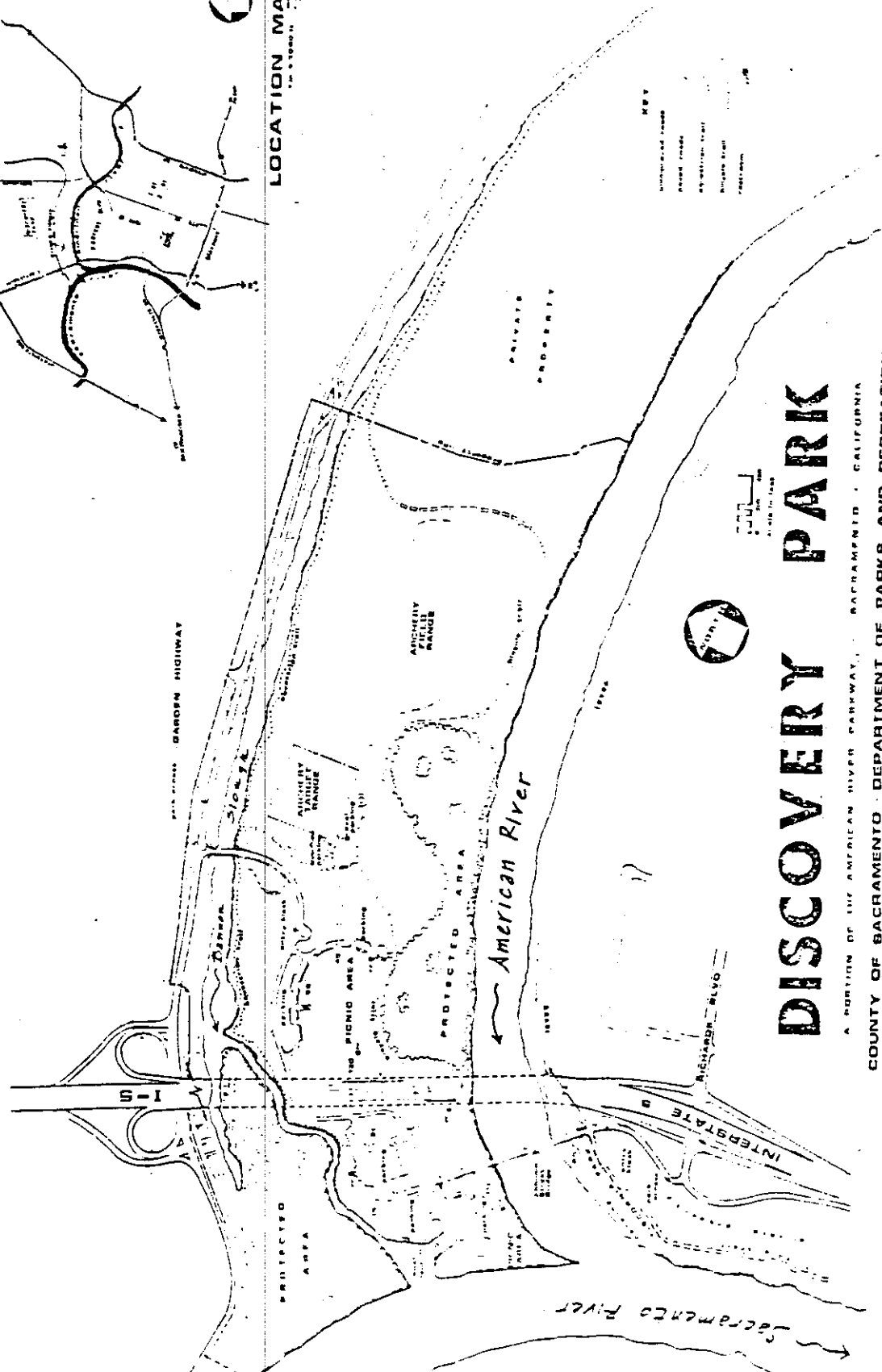
#2



LOCATION MAP  
SCALE 1:50,000

- KEY
- UNDEVELOPED LAND
  - ROADS
  - RAILROADS
  - WATERWAYS
  - BOUNDARIES
  - PROTECTED AREAS
  - ADJUTANT GENERAL'S OFFICE
  - DISCOVERY PARK

JULY 20, 1984



# DISCOVERY PARK

A PORTION OF THE AMERICAN RIVER PARKWAY, SACRAMENTO, CALIFORNIA  
COUNTY OF SACRAMENTO, DEPARTMENT OF PARKS AND RECREATION



SCALE 1:25,000

M84-027

6-14-84

#2



# CITY OF SACRAMENTO

EXHIBIT D

DEPARTMENT OF POLICE  
HALL OF JUSTICE  
813 - 6TH STREET

SACRAMENTO, CALIFORNIA 95814  
TELEPHONE (916) 448-5121

JOHN P. KEARNS  
CHIEF OF POLICE

May 15, 1984

REF: 5-43

Marty Van Duyn  
City Planning Director  
927 - 10th Street  
Sacramento, California

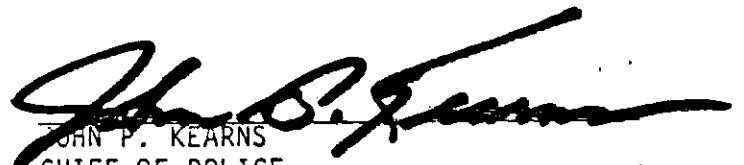
Dear Mr. Van Duyn:

As you are aware, the County of Sacramento is proposing to expand the facilities in Discovery Park. Among other things, they are proposing an outdoor stage and dance floor and seating for over 500 people.

As of now, the City of Sacramento has assumed responsibility for providing police services to this County park, despite the fact that the resources of our Patrol Division are stretched to the maximum. If the facilities at the park are expanded as proposed, the added burden on our Patrol Division would be unacceptable.

The Police Department feels that if the County proceeds with the proposal, they should assume responsibility for providing the necessary police services, either through the Sacramento County Sheriff's Office or by hiring additional park rangers. We have noted that the County is already deriving revenue from the park by charging citizens for admission.

Sincerely,

  
JOHN P. KEARNS  
CHIEF OF POLICE

JPK:jt

CC:  Steve Dee, City Planning Department  
Gene Andal, Director - Sacramento County  
Parks & Recreation  
Walter J. Slipe, City Manager

CITY PLANNING DEPARTMENT

MAY 16 1984

RECEIVED #2

1184-027

6-14-84



CITY OF SACRAMENTO

EXHIBIT E

SACRAMENTO CITY  
PLANNING - ENVIRONMENTAL

MAY 24 1984

RECEIVED

DIVISION OF BUILDING INSPECTIONS  
927 - 10TH STREET SACRAMENTO CALIFORNIA 95814  
ROOM 100

April 23, 1984

William J. Fong  
County of Sacramento  
Department of Parks & Recreation  
3711 Branch Center Road  
Sacramento, CA 95827

RE: DISCOVERY PARK PICNIC FACILITIES

Dear Mr. Fong:

A preliminary review for fire and life safety has been completed for this project. Because the occupant load is 500 I will consider this an (A) 2.1 occupancy since the area called a stage is really a platform. The material used overhead, and all other decorative material shall be fire retardant. The existing appears to be adequate but the aisles between the center tables must be increased to 3 1/2 feet rather than the three feet shown. An additional fire hydrant will be required at the north end of the parking lot approximately 290 feet from the existing hydrant. A standard for a city hydrant is enclosed.

I have found Cal Trans to be rather restrictive with construction under their freeways. In most cases under them has been fire sprinklered. If you haven't contacted them, you should.

Sincerely,

Dennis Lohet,  
FIRE INSPECTOR

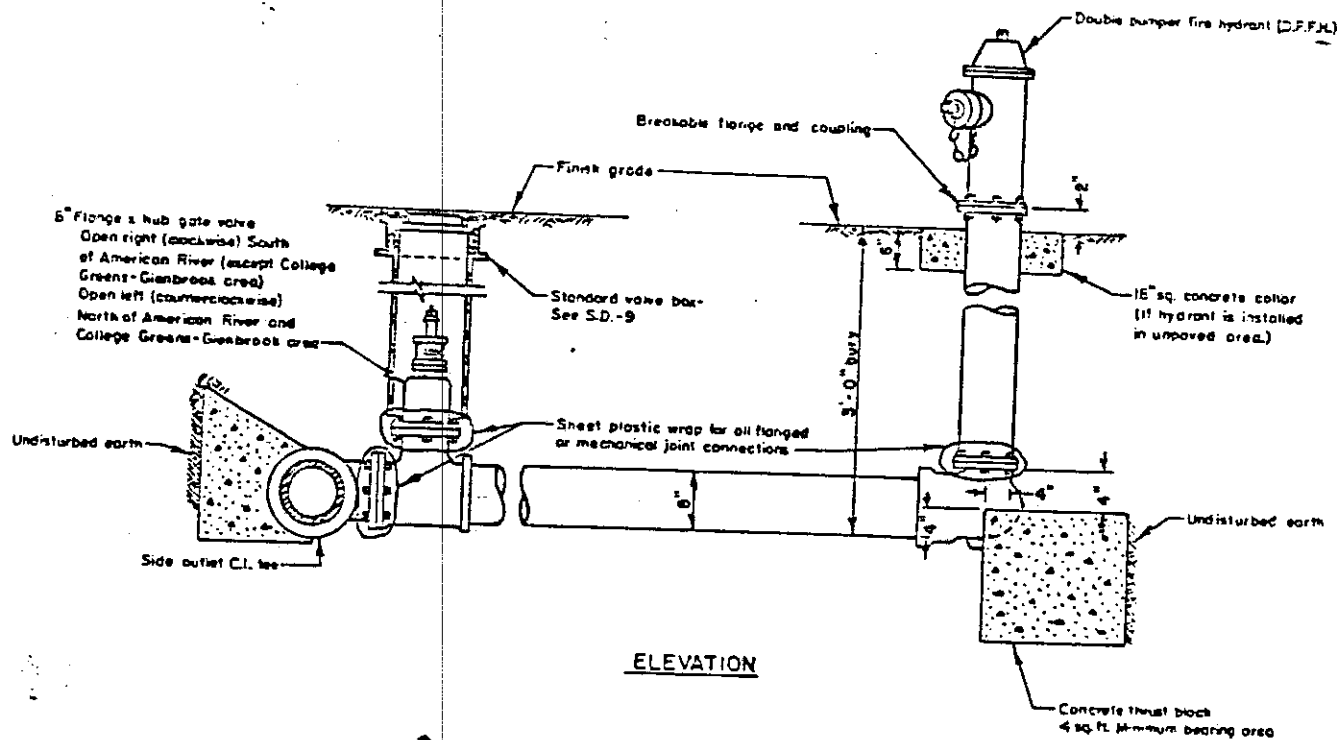
Enc.

DL/efm

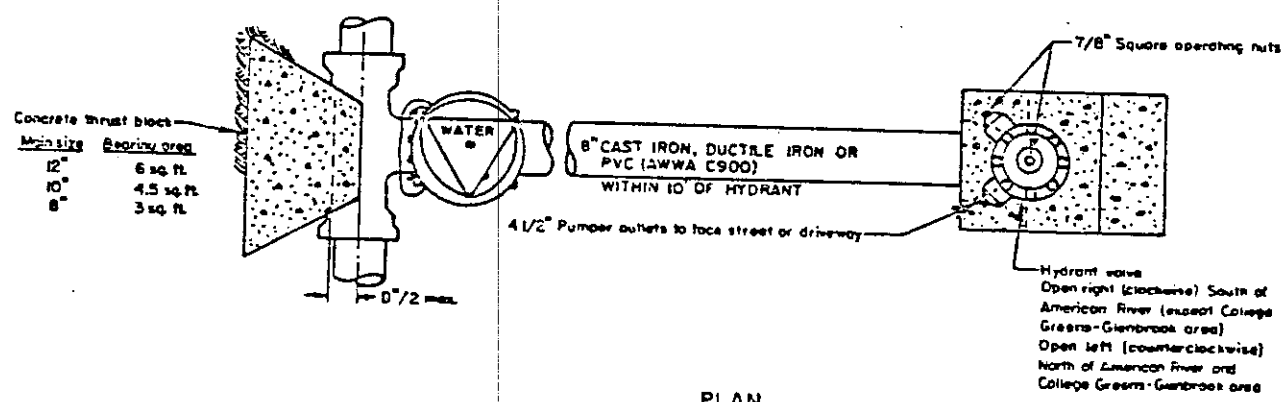
M84-027

6-14-84

#2



ELEVATION



PLAN

**NOTES:**

1. Hydrants shall be in accordance with City of Sacramento Standard Specifications, May 1981, Section 10-28.
2. Hydrants shall not be placed greater than 10' from the paved traveled way.
3. Hydrant shall be set such that a line bisecting the angle between the 4 1/2" pumper outlets is perpendicular to the centerline of the street or traveled way.
4. A coat of aluminum exterior paint shall be applied as a finish coat over the primer coat.

Manhole size	Bearing area
12"	6 sq. ft.
10"	4.5 sq. ft.
8"	3 sq. ft.

7184-027

6-14-84

#2

**CITY OF SACRAMENTO**  
DIVISION OF WATER & SEWERS

INSPECTION GUIDELINES FOR  
**DOUBLE PUMPER**  
FIRE HYDRANT INSTALLATION

APPROVED BY: *[Signature]* SCALE NONE  
DATE: 1982 DWG. NO. 65-14



# CITY OF SACRAMENTO

FILE  
M 84-027

EXHIBIT F

## DEPARTMENT OF

### PARKS AND COMMUNITY SERVICES

3520 FIFTH AVENUE

SACRAMENTO, CALIFORNIA 95817

TELEPHONE (916) 449-5200

**ROBERT P. THOMAS**  
DIRECTOR

**G. ERLING LINGGI**  
ASSISTANT DIRECTOR

CROCKER ART MUSEUM DIVISION  
GOLF DIVISION  
METROPOLITAN ARTS DIVISION  
MUSEUM AND HISTORY DIVISION  
RECREATION DIVISION  
PARKS DIVISION  
ZOO DIVISION

May 29, 1984

MEMO TO: Steve Dee, Assistant Planner

SUBJECT: Discovery Park Group Picnic Facility

From the standpoint of leisure/recreational activities, staff feels the project would benefit a large segment of residents in the Sacramento City/County area as well as people residing in other cities/counties. However, care should be taken to discuss policy issues as they pertain to the American River Parkway Plan such as those enumerated on page two of your May 8, 1984 memo to Walt Ueda, Chief of Administration and Planning for the County of Sacramento.

G. ERLING LINGGI, Assistant Director  
Parks and Community Services

GEL:js

CITY PLANNING DIVISION

MAY 31 1984

**RECEIVED**