

RESOLUTION NO. 2004-928

ADOPTED BY THE SACRAMENTO CITY COUNCIL

ON DEC 14 2004

RESOLUTION APPROVING MAP OF PROPOSED BOUNDARIES OF ANNEXATION NO. 9 TO THE WILLOWCREEK MAINTENANCE ASSESSMENT DISTRICT NO. 98-03

RECITALS:

- A. The City Council has previously formed the Willowcreek Maintenance Assessment District No. 98-03 under chapter 3.124 of the Sacramento City Code (Chapter 3.124).
- B. Tim Lewis Communities, Inc., a California corporation ("Landowner"), is the owner of all land within the Riverbend Village A Subdivision. One of the conditions of approval for this subdivision requires the Landowner to annex it to the Willowcreek Maintenance Assessment District No. 98-03. To fulfill this condition, Landowner has presented a petition to the city requesting that the city commence proceedings for annexing to the district, in accordance with Chapter 3.124, the land generally described in Exhibit A.
- C. The city has installed or acquired or will subsequently install or acquire, within the Riverbend Village A Subdivision, the public improvements described in Exhibit B (the Improvements). To finance the cost of providing the maintenance services specified in Exhibit B for these improvements (the Services), and as requested by the Landowner, the City Council proposes to annex to the district the territory within the Riverbend Village A Subdivision.
- D. By Resolution No. 2004-____, and in response to the Landowner's petition, the City Council (1) initiated proceedings to annex to the district the land generally described in Exhibit A; (2) designated the Interim Development Engineering & Finance Manager to be the Engineer for purposes of the annexing the land to the district and levying any assessment to finance the Services; and (3) directed the Engineer to prepare and file with the City Clerk a map of the annexed territory, as required by section 3110 of the Streets and Highways Code.
- E. As directed, the Engineer has prepared and filed with the City Clerk a map that shows the proposed boundaries of the annexed territory. The map is entitled "Boundary Map, Annexation No. 9 to the Willowcreek Maintenance Assessment District No. 98-03," and a copy of it is attached as Exhibit C. The City Clerk has presented the map to the City Council for consideration.

FOR CITY CLERK USE ONLY

RESOLUTION NO.: 2004-928

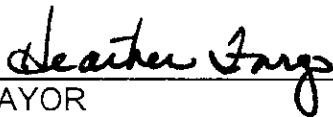
DATE ADOPTED: DEC 14 2004

BASED ON THE FOREGOING RECITALS, THE CITY COUNCIL OF THE CITY OF SACRAMENTO RESOLVES AS FOLLOWS:

Section 1. The City Council finds and determines that the recitals set forth above are true.

Section 2. The City Council approves the map entitled "Boundary Map, Annexation No. 9 to the Willowcreek Maintenance Assessment District No. 98-03," a copy of which is attached as Exhibit C, and directs the City Clerk to endorse on the map a certificate evidencing the date and adoption of this resolution.

Section 3. Exhibits A, B, and C are part of this resolution.


MAYOR

ATTEST:


CITY CLERK

FOR CITY CLERK USE ONLY

RESOLUTION NO.: 2004-928

DATE ADOPTED: DEC 14 2004

EXHIBIT A

GENERAL DESCRIPTION OF TERRITORY TO BE ANNEXED

All that real property situate in the City of Sacramento, County of Sacramento, State of California, described as follows:

The parcel map entitled "Riverbend – Village A", recorded on June 24, 2003 in Book 177 of Parcel Maps, at Page number 6, records of Sacramento County.

FOR CITY CLERK USE ONLY

RESOLUTION NO.: 2004-928

DATE ADOPTED: DEC 14 2004

EXHIBIT B

DESCRIPTION OF IMPROVEMENTS AND SERVICES

The maintenance work (hereafter referred to as the "work") for Annexation No. 9 to the Willowcreek Maintenance Assessment District is briefly described in three parts as follows:

Part #1:

The work described herein is to be carried out at Storm Sump 160 located within the boundaries of the Willowcreek Assessment District No. 94-03 recorded on March 17, 1995, in Book 80 of Maps of Assessment Districts and Community Facilities District at Page 26 in the office of the County Recorder of the County of Sacramento, State of California:

The work to be performed consists of furnishing all tools, equipment, apparatus, facilities, labor, material, supplies, and utilities necessary or desirable to provide inspections and water quality and sediment sampling and analysis.

Part #2

The work described herein is to be carried out at Storm Sump 160, the storm drainage manholes, inlets and pipes in Orchard Lane/River Plaza Drive from its northerly intersection of the Natomas Main Drainage Canal to a point approximately 1,700 feet south of its intersection of West El Camino Avenue, Barandas Drive (formerly known as Road "A"), West River Drive (formerly known as Road "B" & Unity Way) all located within the Willowcreek Assessment District No. 94-03 and the roadways within the Riverbend Village A Subdivision located within Annexation No. 9 to the Willowcreek Maintenance Assessment District No. 98-03:

The work to be performed consists of furnishing all tools, equipment, apparatus, facilities, labor, material, supplies, and utilities necessary or desirable to remove sediment and other debris from the storm drainage system. Maintenance work may include, but not be limited to, sediment removal, normal cleaning and inspection of all storm drainage pipes, inlets, manholes and storm Sump 160.

Part #3

The work described herein is to be carried out on Orchard Lane/River Plaza Drive from its northerly intersection of the Natomas Main Drainage Canal to a point approximately 1,700 feet south of its intersection of West El Camino Avenue, Barandas Drive (formerly known as Road "A"), West River Drive (formerly known as Road "B" & Unity Way) all located within the Willowcreek Assessment District No. 94-03 and the roadways within the Riverbend Village A Subdivision located within the Annexation No. 9 to the Willowcreek Maintenance Assessment District No. 98-03:

The work to be performed consists of furnishing all tools, equipment, facilities, labor, materials, supplies and utilities necessary or desirable to mechanically sweep the roadways in order to remove sediment and other debris.

FOR CITY CLERK USE ONLY

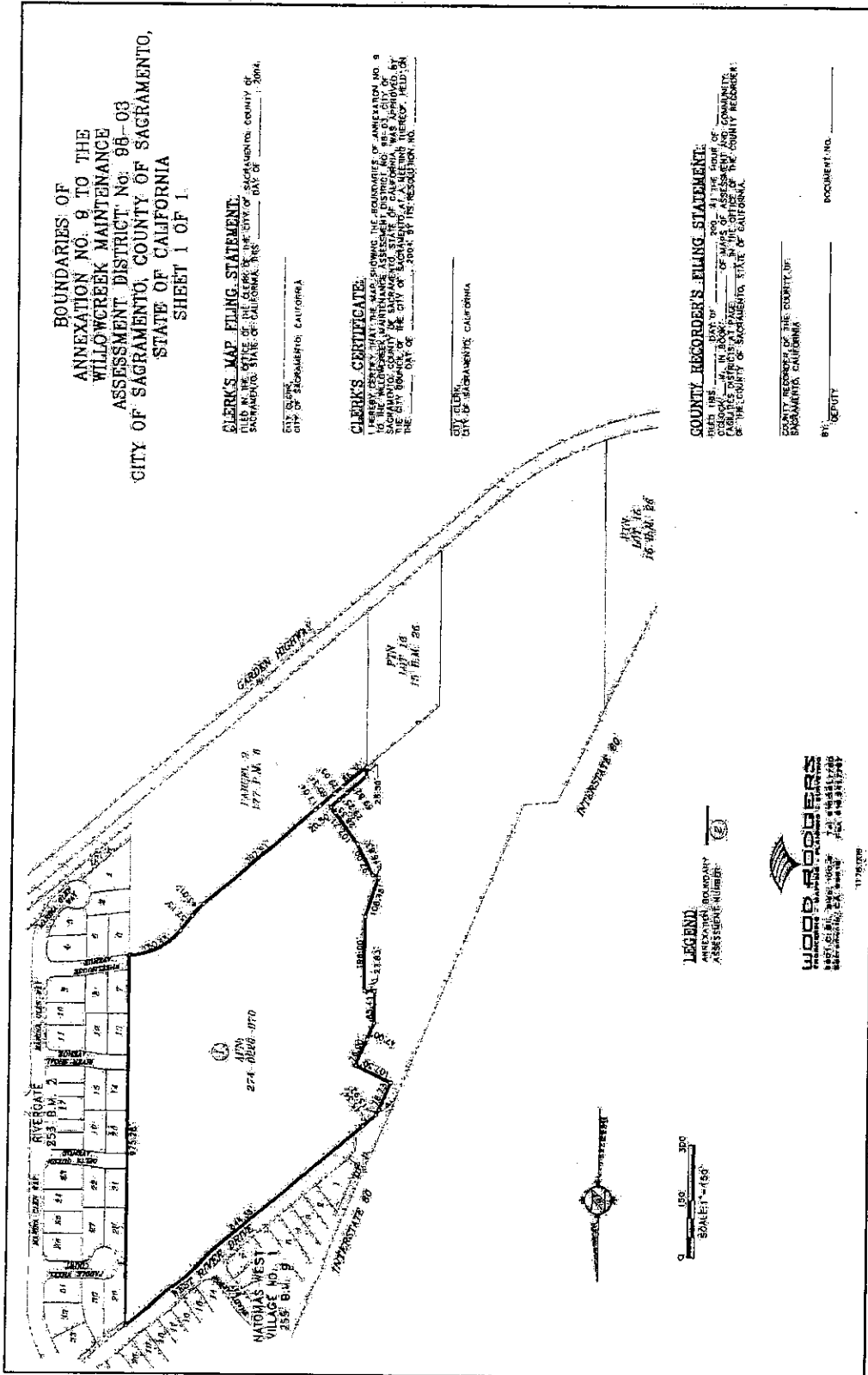
RESOLUTION NO.:

2004-928

DATE ADOPTED:

DEC 14 2004

EXHIBIT C BOUNDARY MAP



BOUNDARIES OF
ANNEXATION NO. 8 TO THE
WILLOWCREEK MAINTENANCE
ASSESSMENT DISTRICT NO. 98-03
CITY OF SACRAMENTO, COUNTY OF SACRAMENTO,
STATE OF CALIFORNIA
SHEET 1 OF 1.

CLERK'S MAP FILING STATEMENT:
FILED IN THE OFFICE OF THE CLERK OF THE CITY OF SACRAMENTO, COUNTY OF
SACRAMENTO, STATE OF CALIFORNIA, THIS _____ DAY OF _____, 2004.

CITY CLERK _____
CITY OF SACRAMENTO, CALIFORNIA

CLERK'S CERTIFICATE:
I HEREBY CERTIFY THAT I AM A CLERK OF THE COUNTY OF SACRAMENTO, COUNTY NO. 9
TO THE WILLOWCREEK MAINTENANCE ASSESSMENT DISTRICT NO. 98-03, CITY OF
SACRAMENTO, STATE OF CALIFORNIA. THE BOUNDARY MAP WAS APPROVED BY
THE CITY CLERK OF THE COUNTY OF SACRAMENTO, STATE OF CALIFORNIA, ON
THE _____ DAY OF _____, 2004, BY ITS RESOLUTION NO. _____

CITY CLERK _____
CITY OF SACRAMENTO, CALIFORNIA

COUNTY RECORDER'S FILING STATEMENT:
THIS MAP WAS FILED IN BOOK _____ OF MAPS OF ASSESSMENT AND COMMUNITY
DISTRICTS, IN BOOK _____ OF MAPS OF ASSESSMENT AND COMMUNITY
DISTRICTS, OF THE COUNTY OF SACRAMENTO, STATE OF CALIFORNIA.

COUNTY RECORDER OF THE COUNTY OF
SACRAMENTO, CALIFORNIA

BY: _____ COUNTY NO. _____

LEGEND
ASSESSMENT NUMBER
ASSESSMENT NUMBER



FOR CITY CLERK USE ONLY

RESOLUTION NO.: 2004-928

DATE ADOPTED: DEC 14 2004