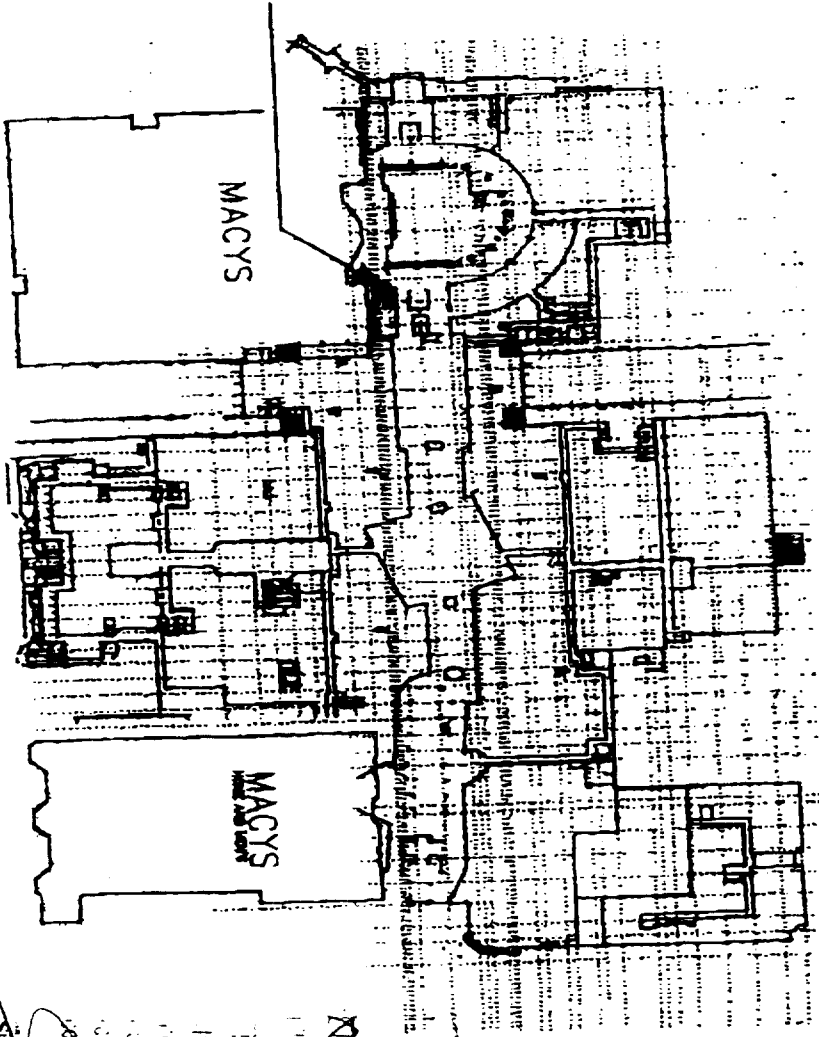




SUNGLASS HUT  
WATCH STATION  
SPACE #2003



WESTFIELD, INC.  
Sign Drawing Review

Approved

Approved as Noted

Resubmit


These drawings have been reviewed for general design  
content only. Tenant is responsible for verification of  
all conditions and compliance with government  
regulations. All items in sign approval letter must be

complied with

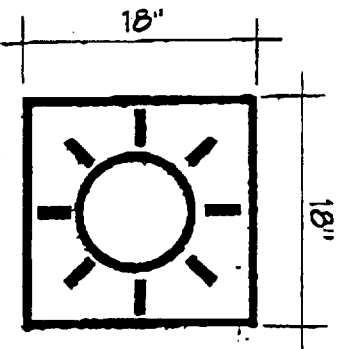
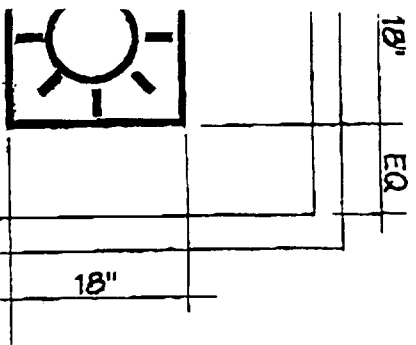
Signed *[Signature]*

Date

5-11-00

CLIENT SUNGLASS HUT WATCH STATION	LOCATION SPACE #2003 DOWNTOWN PLAZA SACRAMENTO, CA	DATE 4-28-00	DRAWING NO. 000606	DRAWN BY K. SHAFER	 <b>TRIANGLE</b> <b>SIGN &amp; SERVICE</b> <small>ASSOCIATION OF GRAPHIC DESIGNERS AND SIGNMAKERS OF AMERICA</small>
SALESMAN ROBERT ALTSHULER	SCALE AS NOTED	SHEET NO. 1 OF 6	REVISED	<small>11,000 COUNCIL FOR THE CITY OF SACRAMENTO 1400 J STREET, 11TH FLOOR SACRAMENTO, CA 95811</small>	





SECTION  
N.T.S.


NON-ILLUMINATED DOOR LOGO (QUANTITY: 1)

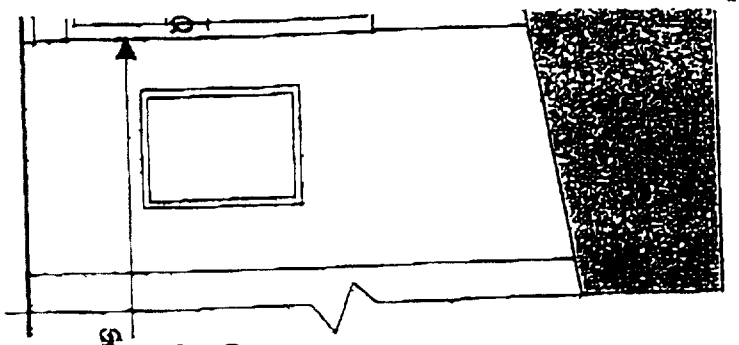
SCALE: 1" = 1'-0"

3/8" THICK PLATE LOGO—  
BORDER & SUNBURST  
FINISHED SILVER  
PIN MOUNT FLUSH TO DOOR

XK ROOM DOOR ELEVATION

1'-0"

#2003	DATE	DRAWING NO.	DRAWN BY	 <b>TRIANGLE</b> <b>SIGN &amp; SERVICE</b> <small>11 ASHLAR COURT          NOLAN, MISSOURI 64590 313-212-1111          1107 S. KENNEDY HWY. #101 214-344-4444</small> <small>REPRODUCTION OR USE OF THIS DRAWING WITHOUT THE WRITTEN PERMISSION OF TRIANGLE SIGN &amp; SERVICE IS PROHIBITED.</small>
AZA	4-28-00	000508	K. SHAFER	
CA	SCALE AS NOTED	SHEET NO. 6 OF 6	REVISED	



8'-9" WINDOW  
ON RIGHT  
RETURN WALL  
EQ 8'-8" EQ  
SGH W/S SGH W/S  
WINDOW VINYL  
(NOT SHOWN)

**TRIANGLE SIGN & SERVICE**

11 MOORE CENTER  
P.O. BOX 15  
1810 J STREET, SUITE 200  
TRINIDAD, CA 94575

REPRODUCTION OF WORK  
OR PART THEREOF WITHOUT  
THE WRITTEN PERMISSION OF  
TRIANGLE SIGN & SERVICE

**WESTFIELD, INC.**  
**Sign Drawing Review**

TRIANGLE SIGNS Fax: 4102471944

May 9 2000 06:38 P.07

- Approved
- Approved as Noted
- Resubmit

These drawings have been reviewed for general design intent only. Tenant is responsible for verification of field conditions and compliance with government regulations. ~~Adams~~ In sign approval letter must be complied with.

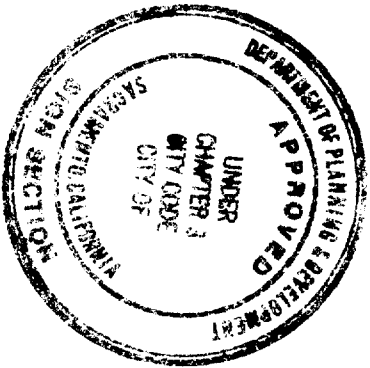
Signed *[Signature]* Date 5-11-00

CLIENT	GUNGLASS HUT WATCH STATION	LOCATION SPACE #2C	DOWNTOWN PLAZA
SALESMAN	ROBERT ALTSHULER	SACRAMENTO, CA	

6'-0"

EQ 18"

TYPICAL STOCK  
SCALE: 3/4"=1'-0"



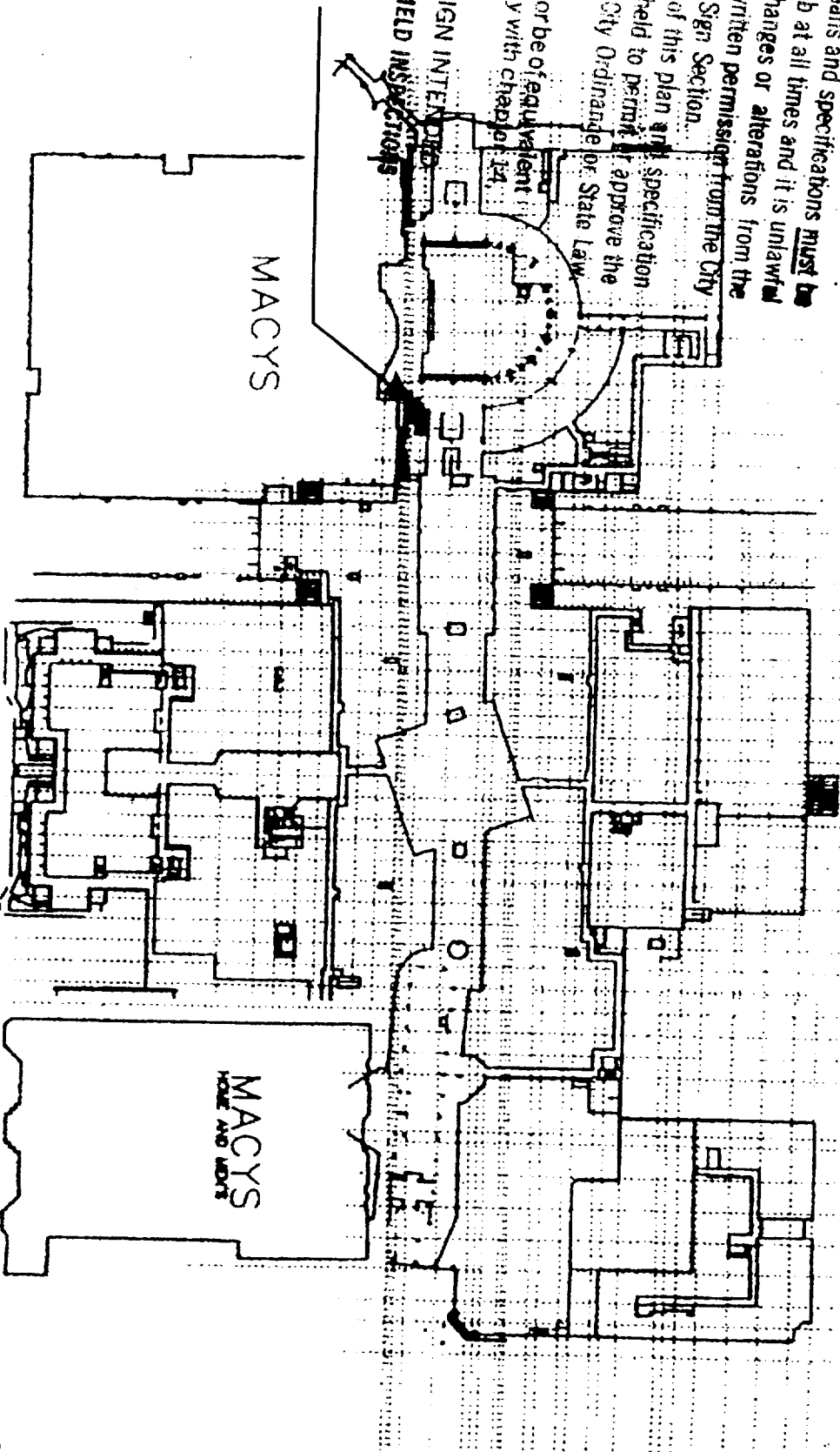
This set of plans and specifications must be kept on the job at all times and it is unlawful to make any changes or alterations from the same without written permission from the City of Sacramento Sign Section.

The approval of this plan and specification shall not be held to permit approval of any City Ordinance or State Law violation of any City Ordinance or State Law.

All electrical work must be U.L. labeled or be of equivalent standards, N.E.C. Sec. 90-6/and comply with Chapter 12, Div 2 of Sacramento City Code.

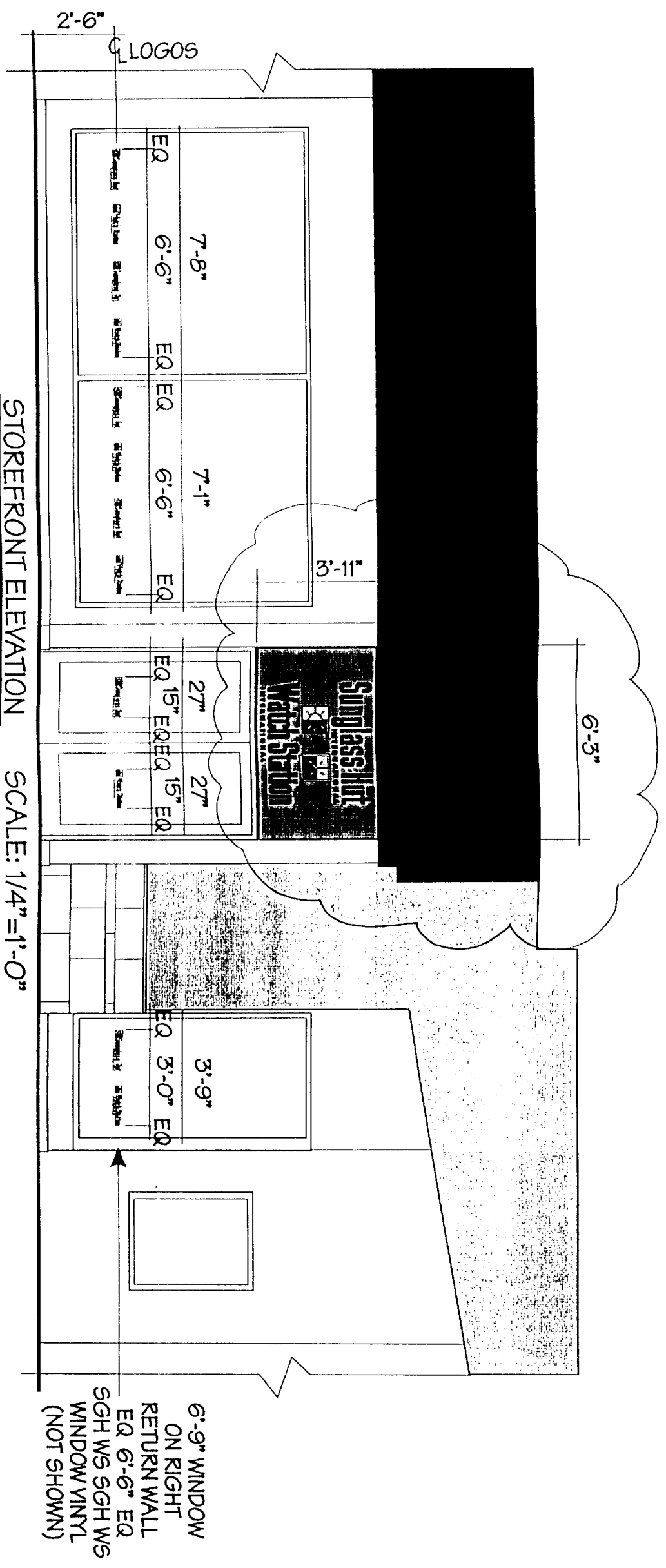
EQUIPMENT MUST BE USED AS DESIGN INTENDED. ALL SIGN INSTALLATIONS ARE SUBJECT TO FIELD INSPECTIONS.

**SUNGLASS HUT  
WATCH STATION  
SPACE #2003**




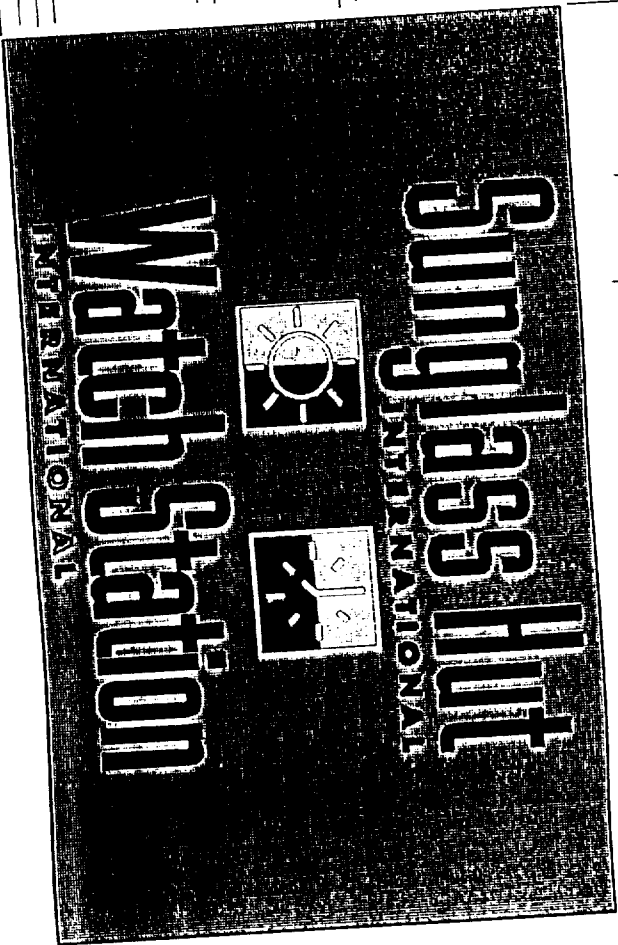
**FILE COPY  
S21208**

CLIENT	SUNGLASS HUT WATCH STATION	LOCATION	SPACE #2003 DOWNTOWN PLAZA SACRAMENTO, CA	DATE	4-28-00	DRAWING NO.	000506	DRAWN BY	K. SHAFER	REVISED	5-22-00	<p><b>TRIANGLE SIGN &amp; SERVICE</b></p> <p>REPRODUCTION IN WHOLE OR PART PROHIBITED WITHOUT EXPRESS PERMISSION OF TRIANGLE SIGN &amp; SERVICE</p>
SALESMAN	ROBERT ALTSHULER	SCALE	AS NOTED	SHEET NO.	1 OF 6	<p>11 AZAR COURT P.O. BOX 24186 BALTIMORE, MARYLAND 21222 (410) 247-5300 FAX (410) 247-1944</p>						



STOREFRONT ELEVATION SCALE: 1/4"=1'-0"

CLIENT SUNGLASS HUT WATCH STATION	LOCATION SPACE #2003 DOWNTOWN PLAZA SACRAMENTO, CA	DATE 4-28-00	DRAWING NO. 000506	DRAWN BY K. SHAFER	 <b>TRIANGLE</b> SIGN & SERVICE REPRODUCTION IN WHOLE OR PART PROHIBITED WITHOUT EXPRESS PERMISSION OF TRIANGLE SIGN & SERVICE
SALESMAN ROBERT ALTSHULER	SCALE AS NOTED	SHEET NO. 2 OF 6	REVISED 5-22-00	11 AZAR COURT P.O. BOX 24186 BALTIMORE, MARYLAND 21227 (410) 247-5300 FAX (410) 247-1944	



FRONT ELEVATION

TOP VIEW

CLIENT SUNGLASS HUT  
WATCH STATION

SALESMAN  
ROBERT ALTSHULER

LOCATION SPACE #2003  
DOWNTOWN PLAZA  
SACRAMENTO, CA

DATE 4-28-00  
SCALE AS NOTED

DRAWING NO. 000506  
SHEET NO. 3 OF 6

DRAWN BY K. SHAFER  
REVISED 5-22-00

**TRIANGLE**  
SIGN & SERVICE

11 AZAR COURT  
P.O. BOX 24186  
BALTIMORE, MARYLAND 21227  
(410) 247-5300 FAX (410) 247-1944

REPRODUCTION IN WHOLE  
OR PART PROHIBITED WITHOUT  
EXPRESS PERMISSION OF  
TRIANGLE SIGN & SERVICE

ONE (1) RADIUSED FRONT/FLAT BACK  
S/F ROUTED ILLUMINATED SIGN:

SCALE: 3/4" = 1'-0"

ALUM. CABINET W/ RADIUSED ROUTED FACE FINISHED META-FLEX SILVER W/ SUNGLASS HUT LOGO: BORDER & SUNBURST--

CLEAR PUSH THRU PLEX RAISED 3/8" FROM SIGN  
BACKED UP W/ WHITE PLEX

FIELD FLUSH W/ BACKGROUND  
RIGHT SIDE: MATCH TRANSLUCENT PROCESS BLUE  
LEFT SIDE: MATCH TRANSLUCENT ORANGE PMS #151

WATCH STATION LOGO: BORDER & CLOCK--  
CLEAR PUSH THRU PLEX RAISED 3/8" FROM SIGN

BACKED UP W/ WHITE PLEX  
FIELD FLUSH W/ BACKGROUND

TOP- MATCH TRANSLUCENT YELLOW PMS #116-C  
BOTTOM- MATCH TRANSLUCENT BLUE PMS #660-C

'SUNGLASS HUT & WATCH STATION' - CLEAR PLEX PUSH THRU LETTERS  
RAISED 3/8" FROM SIGN SURFACE

BACKED UP W/ WHITE PLEX

FACES OF LETTERS TO HAVE BLACK VINYL APPLIED  
IN ORDER TO ILLUMINATE EDGES OF LETTERS ONLY

'INTERNATIONAL' (BELOW 'SUNGLASS HUT') - ROUTED & BACKED-UP  
W/ MATCH TRANSLUCENT PROCESS BLUE

'INTERNATIONAL' (BELOW 'WATCH STATION') - ROUTED & BACKED-UP  
W/ MATCH TRANSLUCENT PMS #660 BLUE

ILLUMINATED BY 800 MA/HO LAMPS



CLIENT SUNGLASS HUT  
WATCH STATION

SALESMAN  
ROBERT ALTSHULER

LOCATION SPACE #2003  
DOWNTOWN PLAZA  
SACRAMENTO, CA

DATE 4-28-00

SCALE AS NOTED

DRAWING NO. 000506

SHEET NO. 4 OF 6

DRAWN BY K. SHAFER

REVISED 5-22-00

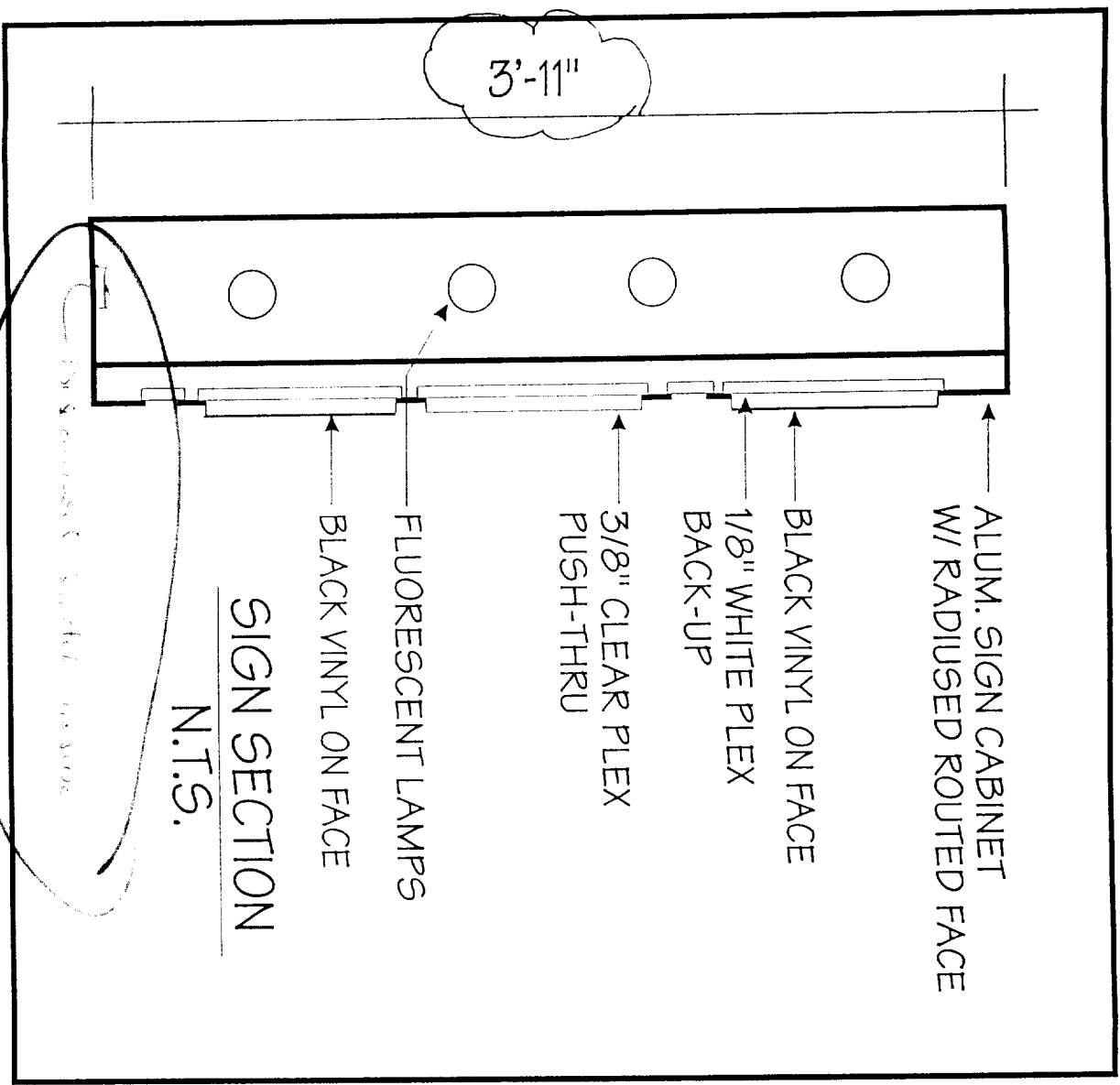
**TRIANGLE**  
SIGN & SERVICE

11 AZAR COURT  
P.O. BOX 24185  
BALTIMORE, MARYLAND 21227  
(410) 247-5300 FAX (410) 247-1944

REPRODUCTION IN WHOLE  
OR PART PROHIBITED WITHOUT  
EXPRESS PERMISSION OF  
TRIANGLE SIGN & SERVICE

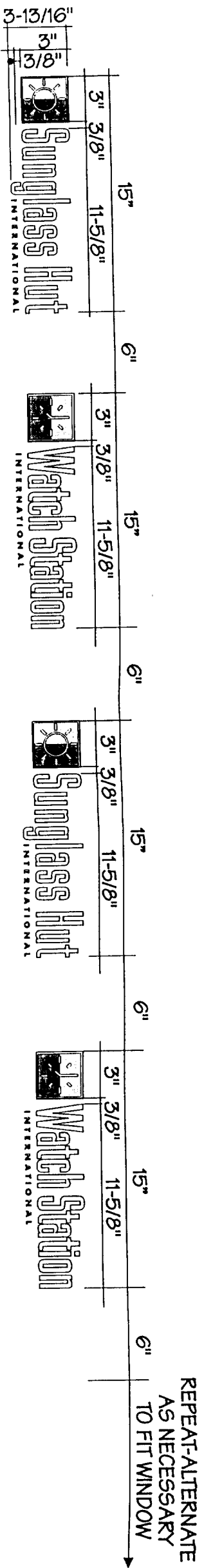
*EXISTING ELECTRICAL CIRCUIT*

*T.M. 5-30-2000*  
**The approval of an Electrical Inspector is subject to field inspection.**



**SIGN SECTION**  
N.T.S.

*EXISTING ELECTRICAL CIRCUIT*




WINDOW VINYL LOGOS & LETTERS:  
SCALE: 1-1/2" = 1'-0"

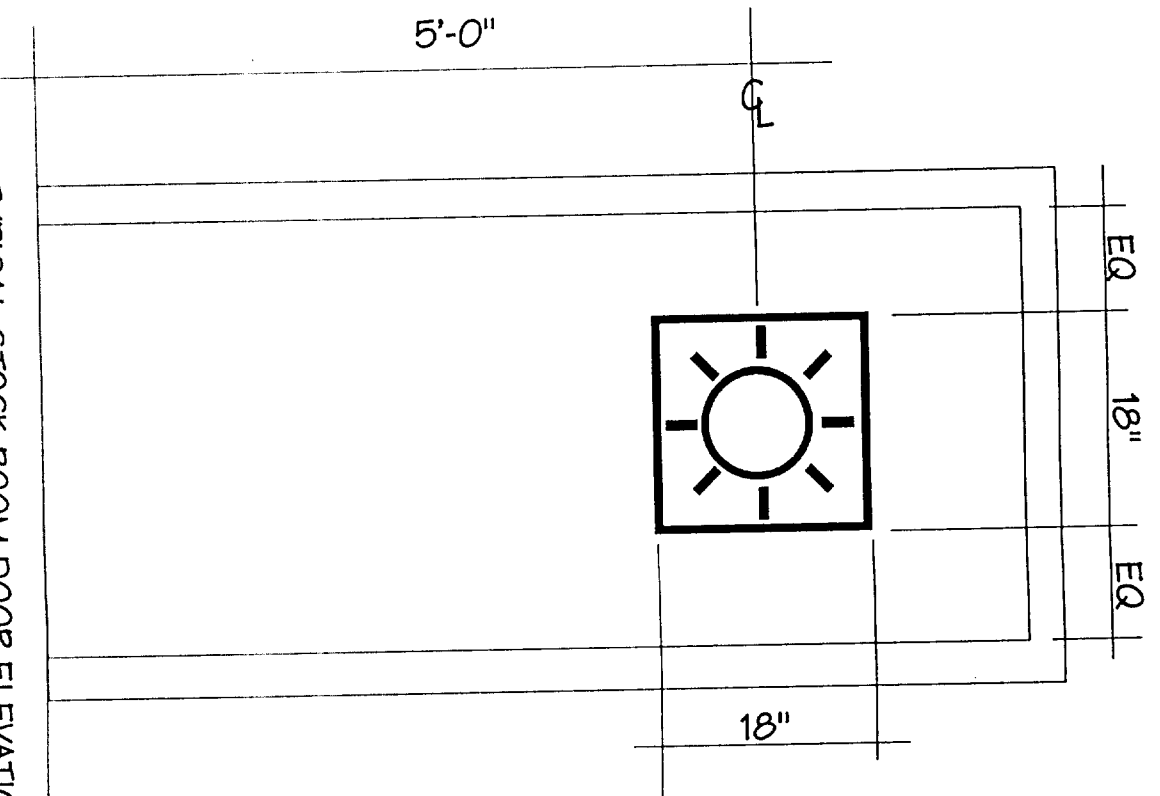
REVERSE CUT VINYL APPLIED TO INSIDE OF WINDOWS  
SUNGLASS HUT LOGOS: BORDER & SUNBURST-- WHITE  
RIGHT SIDE: MATCH PROCESS BLUE  
LEFT SIDE: MATCH ORANGE PMS #151

"SUNGLASS HUT"- WHITE  
"INTERNATIONAL"- MATCH PROCESS BLUE

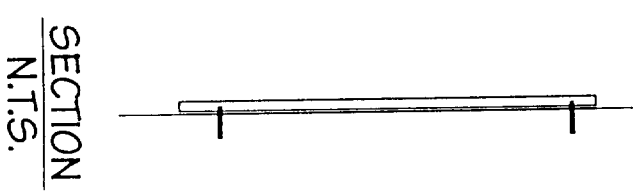
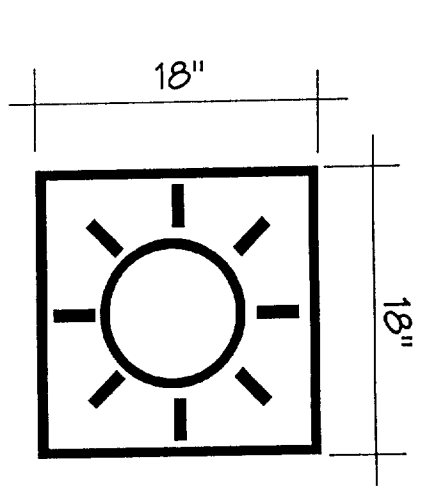
WATCH STATION LOGOS: BORDER & CLOCK- WHITE  
TOP- MATCH YELLOW PMS #116-C  
BOTTOM- MATCH BLUE PMS #660-C

"WATCH STATION"- WHITE  
"INTERNATIONAL"- MATCH PMS #660-C BLUE


CLIENT SUNGLASS HUT WATCH STATION	LOCATION SPACE #2003 DOWNTOWN PLAZA SACRAMENTO, CA	DATE 4-28-00	DRAWING NO. 000506	DRAWN BY K. SHAFER	 <b>TRIANGLE</b> SIGN & SERVICE 11 AZAR COURT P.O. BOX 24186 BALTIMORE, MARYLAND 21227 (410) 247-5300 FAX (410) 247-1944 REPRODUCTION IN WHOLE OR PART PROHIBITED WITHOUT EXPRESS PERMISSION OF TRIANGLE SIGN & SERVICE
SALESMAN ROBERT ALTSHULER	SCALE AS NOTED	SHEET NO. 5 OF 6	REVISED		



TYPICAL STOCK ROOM DOOR ELEVATION  
SCALE: 3/4"=1'-0"



NON-ILLUMINATED DOOR LOGO (QUANTITY: 1)  
SCALE: 1" = 1'-0"  
3/8" THICK PLATE LOGO--  
BORDER & SUNBURST  
FINISHED SILVER  
PIN MOUNT FLUSH TO DOOR

CLIENT SUNGLASS HUT WATCH STATION	LOCATION SPACE #2003 DOWNTOWN PLAZA SACRAMENTO, CA	DATE 4-28-00	DRAWING NO. 000506	DRAWN BY K. SHAFER	 <b>TRIANGLE</b> SIGN & SERVICE <small>REPRODUCTION IN WHOLE OR PART PROHIBITED WITHOUT EXPRESS PERMISSION OF TRIANGLE SIGN &amp; SERVICE</small>
SALESMAN ROBERT ALTSHULER	SCALE AS NOTED	SHEET NO. 6 OF 6	REVISED	11 AZAR COURT P.O. BOX 24186 BALTIMORE, MARYLAND 21227 (410) 247-5300 FAX (410) 247-1944	