



REPORT TO COUNCIL

City of Sacramento

915 I Street, Sacramento, CA 95814-2604
www.CityofSacramento.org

Consent
November 13, 2007

**Honorable Mayor and
Members of the City Council**

**Title: Meister Terrace Neighborhood Traffic Management Program Project
(PN: TI16)**

Location/Council District: The Meister Terrace Neighborhood is generally bound by C Street on the northwest, Elvas Avenue on the northeast, McKinley Boulevard on the southeast and 39th Street on the southwest. Location Map - Exhibit A of Resolution. (District 3)

Recommendation: Adopt a **Resolution** approving the Meister Terrace Neighborhood Traffic Management Plan (NTMP) Project - Phase 1 Traffic Calming Plan (PN: TI16).

Contact: Debb Newton, Program Analyst, 808-6739; Angie Louie, Senior Engineer, 808-7921

Presenters: None

Department: Transportation

Division: Engineering Services

Organization No: 3439

Description/Analysis

Issue: The Meister Terrace Neighborhood has been a participant in the Neighborhood Traffic Management Program (NTMP) since the kick-off community meeting held in May 2006. The goals of the Meister Terrace NTMP are to reduce the number of collisions at the intersection of C Street and Elvas Avenue, improve safety on 36th Way and reduce the critical speed on several streets within the neighborhood.

Policy Considerations: The NTMP is consistent with the City's Strategic Plan for improving public safety and achieving sustainability and livability.

Environmental Considerations: The Development Services Department, Environmental Planning Services Division has reviewed the Meister Terrace NTMP project and has determined that the project is exempt from the provisions of the California Environmental Quality Act (CEQA) under Class 1, Section 15301(c) and Class 11, Section 15311(a) of the CEQA Guidelines.

Projects exempted under Class 1, Section 15301(c), consist of the operation, repair, or minor alteration of existing highways, streets, sidewalks, gutters, and similar facilities involving negligible or no expansion of use. Projects exempted under Class 11, Section 15311(a), consist of the construction or replacement of minor structures accessory to existing commercial, industrial, or institutional facilities, including, but not limited to on-premise signs.

Rationale for Recommendation: The Phase I Traffic Calming Plan, developed by the Meister Terrace Traffic Calming Committee, addresses intersection safety and speeding concerns at key locations in the neighborhood with the installation of speed lumps, striping and signage. The plan was recently approved by a vote of residents.

Phase I Improvements: The traffic calming plan involves placing physical devices on neighborhood streets. The Phase I plan for the Meister Terrace neighborhood includes the installation of:

- Curve warning LED blinker signs with radar detection on the approaches to the intersection of C Street and Elvas Avenue,
- Edge line striping approaching the intersection and dashed through the intersection curve at C Street and Elvas Avenue,
- Stop signs to provide right-of-way at the intersection of Tivoli Way and 36th Way,
- Speed lumps and speed legends on 39th Street, McKinley Boulevard and Elvas Avenue,
- Updated signage and advanced warning legends for the crosswalk at C Street and 39th Street.
- Neighborhood signs at key entrance points to the neighborhood.

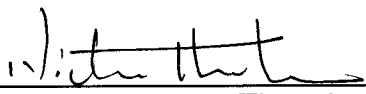
A copy of the ballot, which includes device locations, is included in the Resolution, Exhibit B.

The Meister Terrace traffic plan includes the City of Sacramento's first use of LED blinker signs. The LED lights illuminate the edges of the signs and are approved in the Manual on Uniform Traffic Control Devices for use on curve warning signs. The signs also utilize radar detection which will activate the LED lights when drivers exceed the advisory speed by five mph or more. This application will serve as a pilot study location for the City.

Ballot Results: The NTMP requires residents to vote on Phase I measures. In order to have a successful ballot, a minimum of 25% of all ballots must be returned. A majority vote (50%, plus 1) determines the ballot results. Of the ballots mailed to Meister Terrace residents, 47.3% were returned with valid votes. Of these, 67.7% (132 votes) were in favor of the Phase I measures and 32.3% (63 votes) were opposed. Therefore, the minimum requirement for returned ballots was met and the majority of votes cast were in favor of the Phase I plan.

Financial Considerations: The estimated cost of the Phase I plan for the Meister Terrace NTMP Project (PN: TI16) is \$27,000. Funding for this project will come from two sources: \$25,000 from the Meister Terrace Neighborhood NTMP Project (PN: TI16) (Fund 201) and \$2,000 from the Neighborhood Traffic Management Program (PN: TS31) (Fund 201). As of October 19, 2007, the Meister Terrace NTMP Project (PN: TI16) has a total and unobligated budget of \$25,000 and the Neighborhood Traffic Management Program (PN: TS31) has an unobligated balance of \$255,182, which is sufficient to cover the estimated cost for Phase I of the Meister Terrace NTMP Project.

Emerging Small Business Development (ESBD): Any goods and services will be procured in accordance with established City policy.

Respectfully Submitted by: 
Nicholas Theocharides
Engineering Services Manager

Approved by: 
Jerry Way
Director of Transportation

Recommendation Approved:


RAY KERRIDGE
City Manager

Table of Contents:

Report	Pg	1
Attachments		
1 Background	Pg	4
2 Resolution	Pg	5
Exhibit A – Meister Terrace Location Map	Pg	6
Exhibit B - Traffic Calming Plan Ballot	Pg	7

Attachment 1

Background Information:

The Neighborhood Traffic Management Program (NTMP) was adopted by City Council in December 1995, and officially began in May 1996. Meister Terrace is the tenth neighborhood to participate in Council District 3. The kick-off community meeting for the neighborhood was held in May 2006. Since that time, the following has been accomplished using the three "E's" (Education, Enforcement, Engineering) of this program:

Education

- Newsletters and flyers were sent to residents to inform them of the NTMP process.
- A survey of traffic issues was mailed to each residence for input on traffic concerns and comments for solutions.
- The radar speed board was deployed in the area for a few days each month to educate drivers of their speed.
- Traffic Calming Committee members attended a Neighborhood Traffic Class to learn more about traffic engineering practices, laws and traffic calming devices.

Enforcement

- Residents were informed through flyers about various traffic and parking laws.
- Police traffic enforcement was requested to address speeding concerns.

Engineering

- A traffic calming plan was designed by the Traffic Calming Committee, reviewed by City Engineering staff and presented to neighborhood residents for comment at a community meeting.

Attachment 2

RESOLUTION NO.

Adopted by the Sacramento City Council

**MEISTER TERRACE NEIGHBORHOOD TRAFFIC MANAGEMENT PROGRAM
PROJECT APPROVAL (PN: T116)**

BACKGROUND

- A. The Neighborhood Traffic Management Program (NTMP) was adopted by City Council in December 1995 and officially began in May 1996.
- B. The Meister Terrace Neighborhood NTMP Project (PN: T116) began in May 2006. The project has followed the NTMP guidelines established by Council resolution. Exhibit A identifies project boundaries.
- C. A traffic calming plan has been designed by residents serving on the Traffic Calming Committee and voted on by neighborhood residents with a 67.7% approval rate. Exhibit B (attached) is the ballot.

**BASED ON THE FACTS SET FORTH IN THE BACKGROUND, THE CITY COUNCIL
RESOLVES AS FOLLOWS:**

Section 1. The Meister Terrace NTMP Project (PN: T116) is approved.

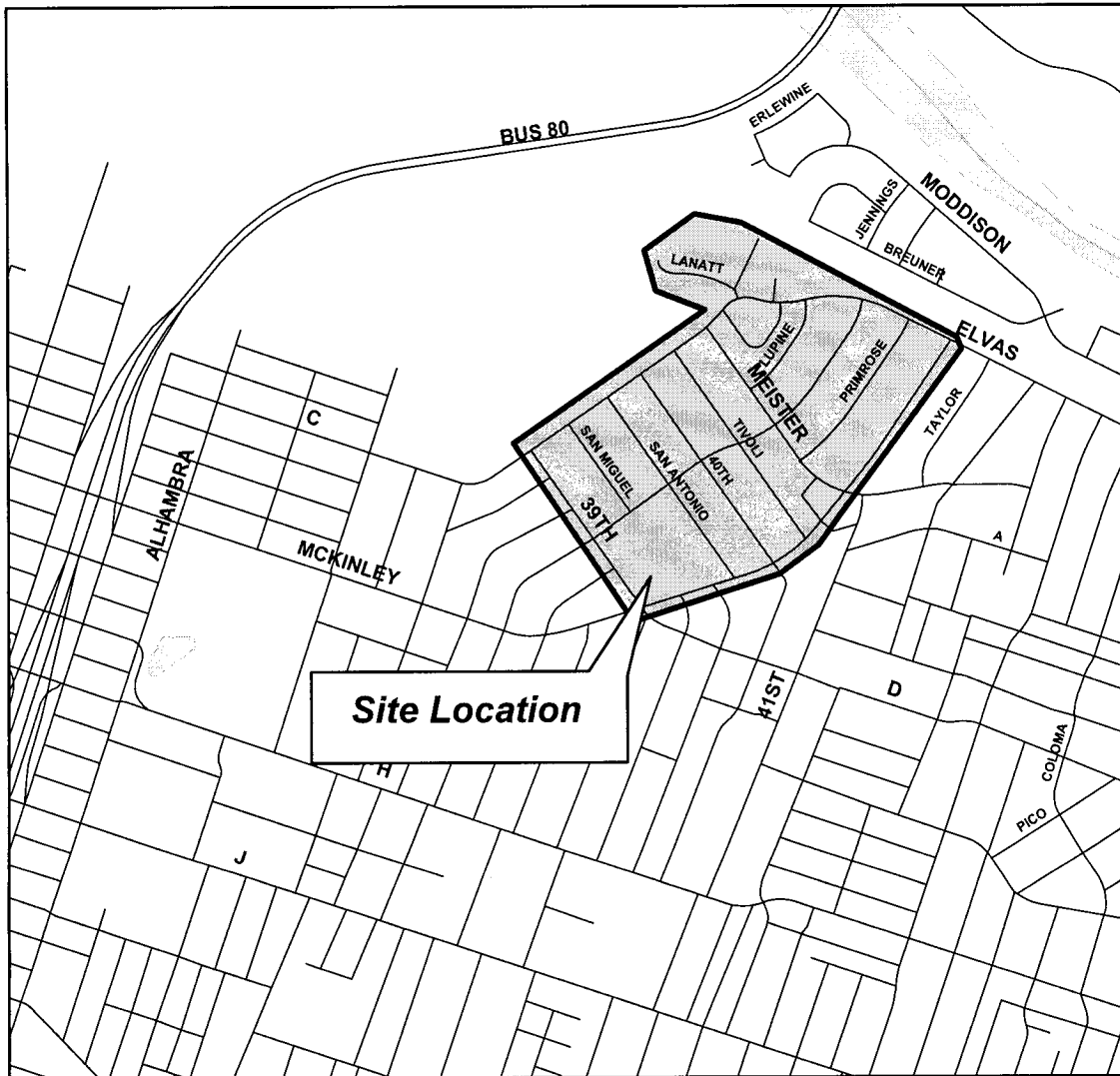
Table of Contents:

Exhibit A: Meister Terrace NTMP Location Map - 1 page

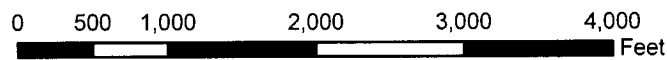
Exhibit B: Traffic Calming Plan Ballot - 1 page

EXHIBIT A

Location map for
MEISTER TERRACE NTMP NEIGHBORHOOD
(PN:TI16)



Map Contact: Hamid Khalessi
Date: October 15, 2007





It's easy to vote!
Tear off the ballot, cast your vote and drop it in the mail. (postage is paid)

Meister Terrace

One ballot per address.

My address

Yes – I am in favor of the measures indicated on this ballot.

No – I am not in favor of the measures indicated on this ballot.

Comments

All responses must be postmarked by

August 31, 2007

Proposed Measures for Your Neighborhood

Below are the recommended measures. If approved, the measures will be constructed at no cost to residents and /or homeowners. You are asked to vote in favor of or against the entire traffic calming plan which includes the following measures:

- C Street/Elvas Avenue Curve Treatment-
 - ◆ Replace the existing curve warning signs located on C St east of Meister Wy and on Elvas Av opposite Lupine Wy, with radar activated curve warning LED blinker signs,
 - ◆ Install an edge line on the north side of C St/Elvas Av through the curve at Lanat St and extending to the tangent segments,
 - ◆ Remove the existing curve warning and speed signs on westbound Elvas Av between 36th Wy & Primrose Wy.
- Stop Signs -
 - ◆ Install two stop signs on Tivoli Wy at the intersection with 36th Wy.
- Speed Limits-
 - ◆ Install a speed lump on 39th St between D St & Santa Ynez Wy,
 - ◆ Install a speed lump on 39th St between 36th Wy & McKinley Bl,
 - ◆ Install two speed lumps on McKinley Bl between San Antonio Wy & Meister Wy.
- Speed Limit Signs and Legends -
 - ◆ Relocate the existing 25 speed limit sign on McKinley Bl between Meister Wy & Elvas Av to just south of Elvas,
 - ◆ Install a speed legend adjacent to the 35 mph speed limit sign on westbound Elvas Av opposite Primrose.
- Crosswalk Upgrade -
 - ◆ Install "Slow Ped Xing" legends in advance of the crosswalk on C St at 39th St. Install crosswalk signs at the Meister Terrace. Install signs on:
 - ◆ C Street near 39th St,
 - ◆ McKinley Bl near Elvas Av,
 - ◆ McKinley Bl near 39th St.

Do you want traffic calming measures in your neighborhood?

You have the opportunity to vote on a traffic calming plan for your neighborhood. This vote is to determine if the measures recommended by the Traffic Calming Committee (TCC), which consists of residents from your neighborhood, will be implemented.

The TCC assisted city staff in developing the plan. Various measures were reviewed and agreed upon by the TCC.

Your Vote Counts!

Every address (residence and business) within your neighborhood has received this notice and ballot. Now is your opportunity to vote for or against the proposed traffic calming measures.

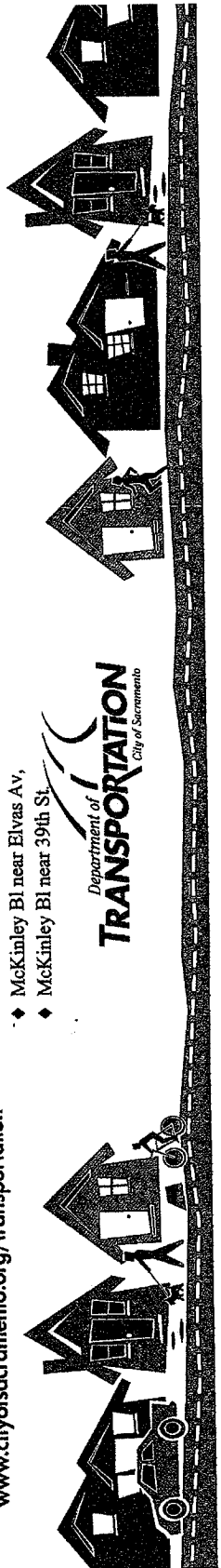
You and your neighbors will decide whether or not the traffic calming measures will be implemented in your neighborhood.

If enough votes are in favor, the plan will be presented to City Council for review, final approval and funding. In order to pass, a minimum of 25% of all ballots must be returned with a simple majority in favor of the plan.

For more information call

(916) 808-8300

www.cityofsacramento.org/transportation



Department of **TRANSPORTATION**
City of Sacramento