

9



CITY OF SACRAMENTO

August 12th, 1980

CITY MANAGER'S OFFICE

RECEIVED
AUG 7 1980

IRVIN E. MORAES
REAL ESTATE SUPERVISOR

REAL ESTATE AND STREET ASSESSMENTS DIVISION
915 I STREET
CITY HALL ROOM 207

SACRAMENTO, CALIFORNIA 95814
TELEPHONE (916) 449-5626

City Council
Sacramento, California

Honorable Members In Session:

SUBJECT: Proposed Sale of 2 Parcels of Surplus City Property

BACKGROUND INFORMATION

The Real Estate Division has had inquiries from the public concerning the purchase of 2 parcels of surplus City property. One is located on 79th Street between 35th and 36th Avenues while the other is located on Blaine Avenue just west of May Street. Both of these parcels were deeded to the City in lieu of foreclosure proceedings. The minimum values were established by comparing recent sales in the areas.

<u>Description</u>	<u>Minimum Bid</u>
Sale No. 1 - Lot 21, Block 5, Avondale #1	\$2,500.00
Sale No. 2 - Lot 26, Sunrise Vista	\$2,500.00

There is no special assessment on Sale No. 1, but there is a special assessment on Sale No. 2.

FINANCIAL DATA

The net proceeds from these sales will be deposited in the General Fund.

RECOMMENDATION

It is recommended that the attached Resolution directing the City Clerk to advertise for bids to be received on August 26th, 1980, be adopted.

Respectfully submitted,

R. H. Parker
City Engineer

APPROVED
BY THE CITY COUNCIL

Recommendation Approved

AUG 12 1980

Walter J. Slive
City Manager

OFFICE OF THE
CITY CLERK

August 12th, 1980
DISTRICT NO. 6 & 2

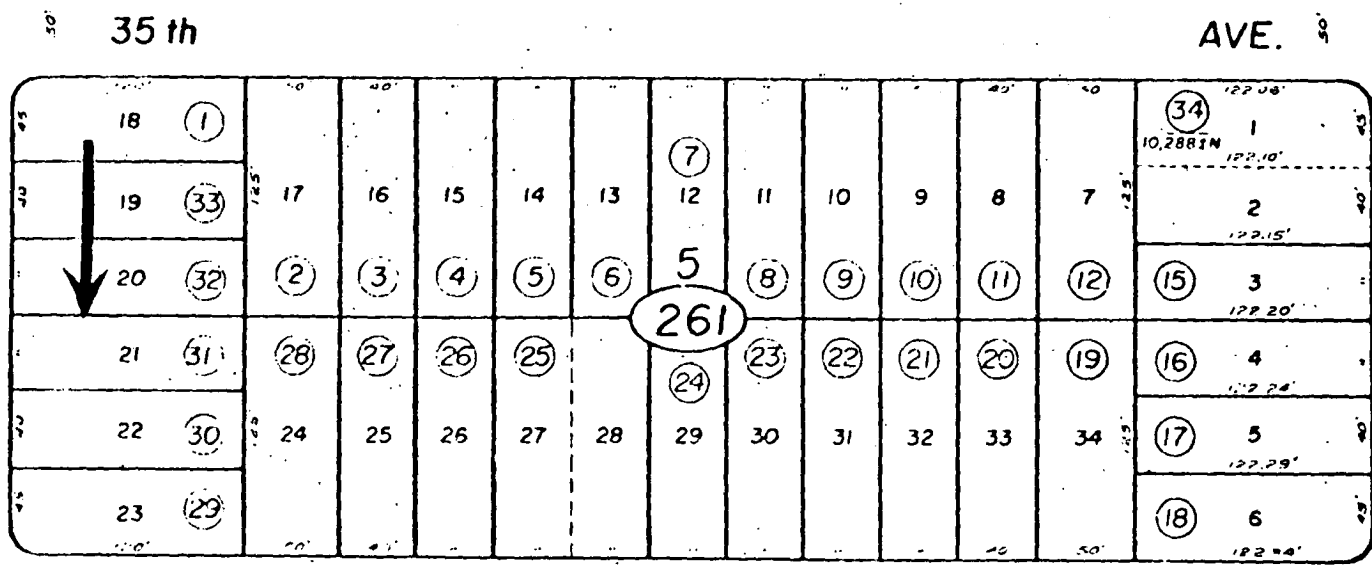
POR. AVONDALE SUB. I

(16)



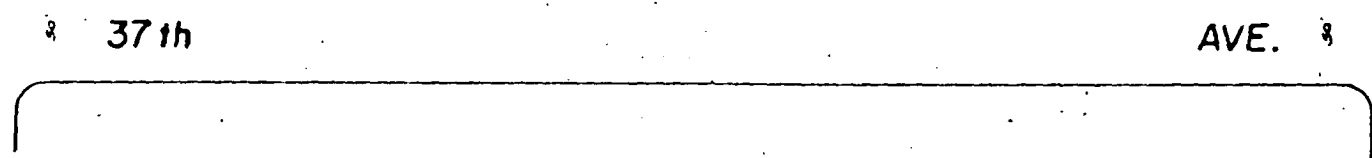
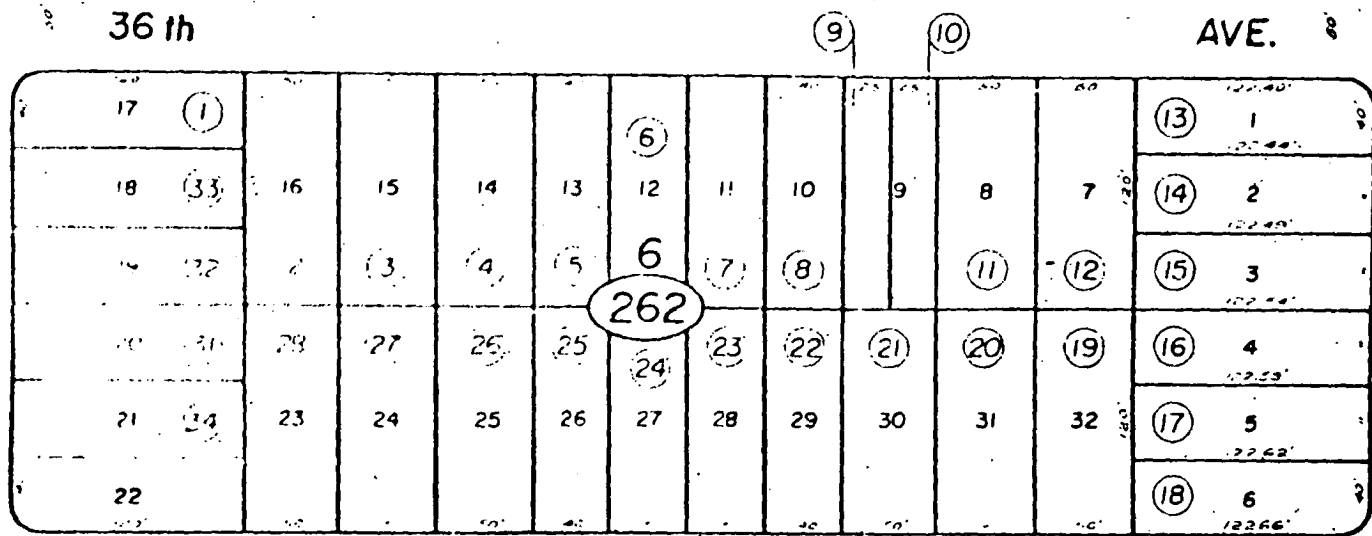
ST. 6

RD. 76



79 th

POWER INN



(34)

"IMPORTANT: This plat is not a survey. It is merely furnished as a convenience to locate the land in relation to adjoining streets and other lands and not to guarantee any dimensions, distances, bearings, or acreage."

CHICAGO TITLE INSURANCE CO.

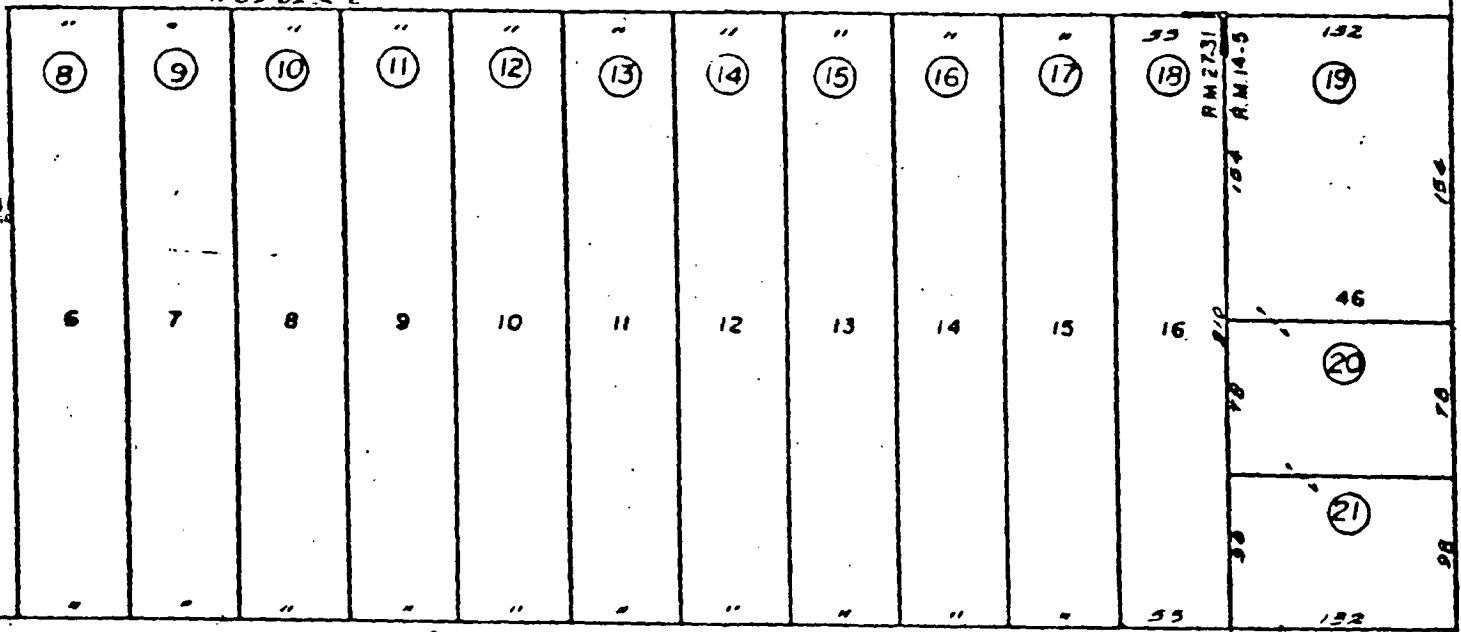
NOTE—Assessor's Block Numbers Shown in Ellipses.

"IMPORTANT: This plat is not a survey. It is merely furnished as a convenience to locate the land in relation to adjoining streets and other lands and not to guarantee any dimensions, distances, bearings, or acreage."

CHICAGO TITLE INSURANCE CO.

14

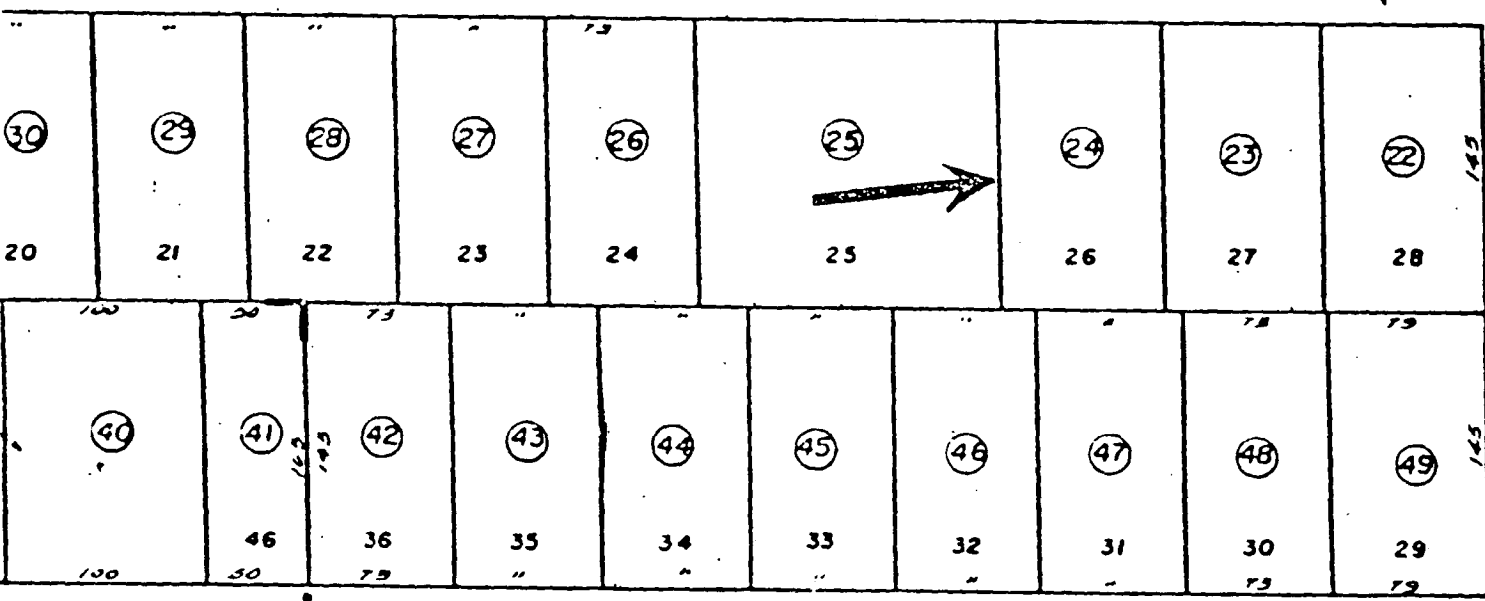
N 89° 01' 27" E



BLAINE AVE.

R.M. 14.5

ST. 26



JESSIE AVE.

AVE.

R.M. 27-31

MAY

20

Assessor's Map Bk.237-Pg.13
County of Sacramento, Calif.

NOTE-Assessor's Block Numbers Shown in Ellipses.
Assessor's Parcel Numbers Shown in Circles.



RESOLUTION NO. 80-525

Adopted by The Sacramento City Council on date of

AUGUST 12, 1980

DIRECTING CITY CLERK TO ADVERTISE FOR BIDS
ON 2 PARCELS OF SURPLUS CITY PROPERTY

BE IT RESOLVED BY THE CITY COUNCIL OF THE CITY OF SACRAMENTO:

That the City Clerk is hereby directed to advertise for bids for the following 2 parcels of surplus City property:

<u>Description</u>	<u>Minimum Bid</u>
Sale No. 1 - Lot 21, Block 5, Avondale #1	\$2,500.00
Sale No. 2 - Lot 26, Sunrise Vista	\$2,500.00

That said bids shall be received on Tuesday, August 26th, 1980.

MAYOR

ATTEST:

CITY CLERK

APPROVED
BY THE CITY COUNCIL

AUG 12 1980

OFFICE OF THE
CITY CLERK