



3.10

DEPARTMENT OF
PARKS AND RECREATION

PARK PLANNING, DESIGN &
DEVELOPMENT DIVISION

CITY OF SACRAMENTO
CALIFORNIA

1231 I STREET, #400
SACRAMENTO, CA
95814-2702

PH 916-264-8529
FAX 916-264-8266

April 23, 2003

City Council
Sacramento, California



Honorable Members in Session:

**SUBJECT: APPROVE NAME ASSIGNMENT FOR STRAUCH PARK; APPROVE
PARK MASTER PLAN; AND APPROVE ENVIRONMENTAL
DOCUMENTS (CIP PN: LS02).**

LOCATION AND COUNCIL DISTRICT: 3075 Northstead Drive,
Council District 1

RECOMMENDATION:

This report recommends that Council, by resolution (page 5):

- Approve the name assignment for Strauch Park;
- Approve the Strauch Park Master Plan; and
- Ratification of the Negative Declaration and adoption of the Mitigation Reporting Program.

CONTACT PERSON: Janet Baker, Park Development Division Manager, 264-8234

FOR COUNCIL MEETING OF: May 13, 2003

SUMMARY:

Strauch Park is a 3.2 acre neighborhood park located at 3075 Northstead Drive. It is bounded by Hazel Strauch School to the north, Ninos Parkway to the west, and single family residential to the south and east. This report requests City Council's approval of the park name and master plan. A Negative Declaration has been prepared for this project. This report recommends ratification of the Negative Declaration and approval and adoption of the Mitigation Reporting



Optimize the Experience of Living!

1

Program.

COMMITTEE/COMMISSION ACTION:

The Strauch Park master plan was reviewed and approved by the Citizen's Advisory Committee for Parks and Recreation on January 7, 2003.

BACKGROUND INFORMATION:

Strauch Park is a 3.2 acre neighborhood park located at 3075 Northstead Drive. It is bounded by Hazel Strauch School to the north, Ninos Parkway to the west, and single family residential to the south and east. (See Exhibit A, page 6).

The park is designed to include community gardens, decomposed granite footpaths, the removal and reconfiguration of an existing service road/bike path, a small turf area, shade structure, drinking fountain and native grasses. A bollard will limit vehicular access to the service road and site.

The name Strauch Park has been associated with the site for as long as the school has been in existence. Community workshops were held in September and December 2002. This park was part of the former Dirt to Grass projects. Due to its unusual shape, power lines, and concerns over appropriate use of turf, a new master planning effort was undertaken employing a water conserving and low maintenance plan, and working closely with the school to develop the community gardens area.

FINANCIAL CONSIDERATIONS:

This report requests approval for the park name, park master plan, and environmental documents only. There are no financial considerations with this report. Financial impacts will be reported when staff returns to City Council in Summer/Fall 2003 for approval of the development agreement. Funding for Phase One development of Strauch Park is available in CIP PN: LS02. Development of the park will create an ongoing cost for park maintenance and utilities of approximately \$8,000 per acre or \$25,600 for this 3.2 acre park.

The Neighborhood Park Maintenance Community Facilities District (CFD) was established to reduce reliance on the general fund for neighborhood park maintenance and to preserve the level of maintenance in the parks system. It was projected that revenues from the CFD would provide approximately 65-70% of the cost associated with maintaining new neighborhood parks for those areas that annex to the District. Since some areas have not annexed to the District, the percentage of costs covered will fall below the 65-70% level. The balance of costs must be borne by the Citywide Landscape and Lighting District and other city funds. It is anticipated that significant

revenues from the CFD will not begin until 2005. In the meantime, maintenance funds must be derived from other sources.

Existing parks and all community parks, regional parks, open space, trails and buffer areas are not covered by the CFD.

ENVIRONMENTAL CONSIDERATIONS:

The Environmental Services Manager has determined that Strauch Park, as proposed, will not have a significant impact to the environment; therefore, a Negative Declaration has been prepared. In compliance with Section 15070(B)1 of the California Environmental Quality Act (CEQA) guidelines, the City has incorporated mandatory mitigation measures into the project plans to avoid identified impacts or to mitigate such impacts to a point where clearly no significant impacts will occur. These mitigation measures are included in Exhibit B (Mitigation Reporting Plan) and address impacts to Air Quality, Hazards and Cultural Resources.

The Negative Declaration was available for Public Review during the period of August 14, 2002 to September 3, 2002 as part of the approval process for the former Dirt to Grass projects. No public comments were received at that time. The Negative Declaration was never ratified. The new master plan for the park was evaluated in a revised Negative Declaration and did not result in significant changes to mitigation measures, which would require a recirculation of the Negative Declaration for public review. Therefore, Staff recommends that the City Council ratify the Negative Declaration and approve and adopt the Mitigated Reporting Plan.

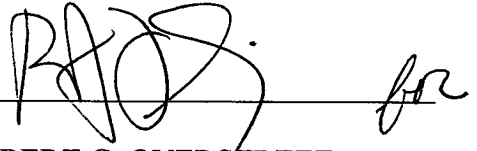
POLICY CONSIDERATIONS:

This action is consistent with City Council's goal to expand park and recreational opportunities.

ESBD EFFORTS:

No goods or services are being purchased in association with this report.

Respectfully submitted,



ROBERT G. OVERSTREET,
Director, Parks and Recreation

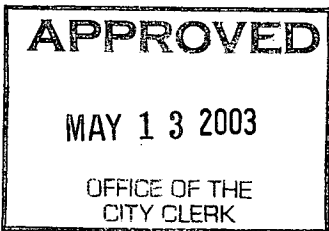
RECOMMENDATION APPROVED:



ROBERT P. THOMAS
City Manager

TABLE OF CONTENTS

1. Resolution accepting park name assignment, master plan, environmental documents, page 5.
2. Exhibit A – Area Map, page 6.
3. Exhibit B – Master Plan, page 7.
4. Exhibit C – Mitigation Reporting Plan, pages 8-12.



RESOLUTION NO. 2003 - 280

ADOPTED BY THE CITY OF SACRAMENTO
ON DATE: _____

RESOLUTION TO APPROVE THE NAME ASSIGNMENT FOR STRAUCH PARK;
APPROVE PARK MASTER PLAN; AND APPROVE ENVIRONMENTAL
DOCUMENTS (CIP PN: LS02).

BE IT RESOLVED BY THE COUNCIL OF THE CITY OF SACRAMENTO THAT:

The City Council, by resolution:

1. Approves the name assignment for Strauch Park;
2. Approves the Strauch Park Master Plan; and
3. Ratifies the Negative Declaration and adopts the Mitigation Reporting Program.

MAYOR

ATTEST:

CITY CLERK

FOR CITY COUNCIL USE ONLY

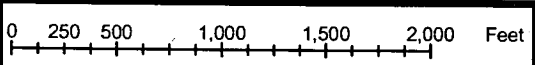
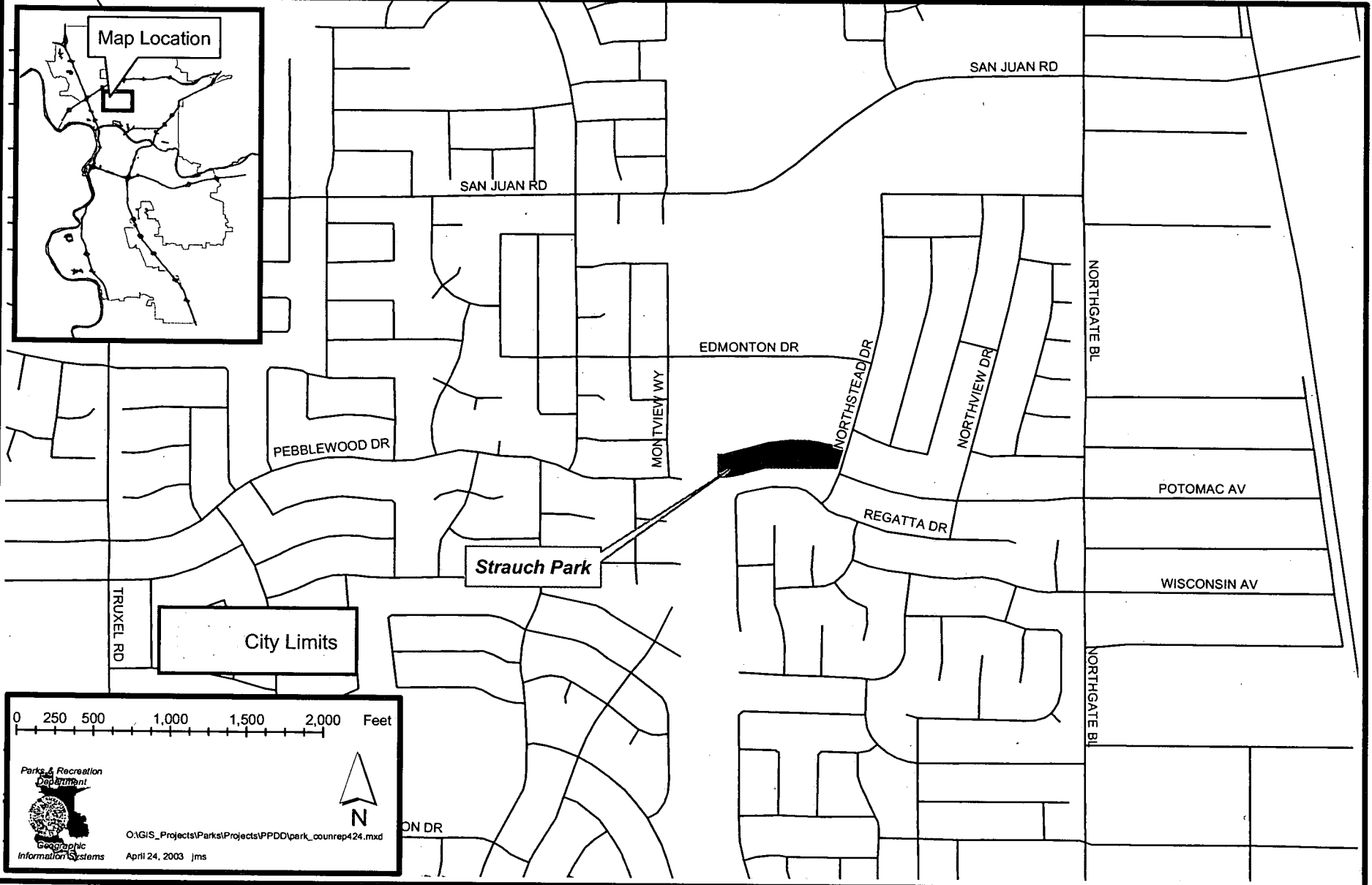
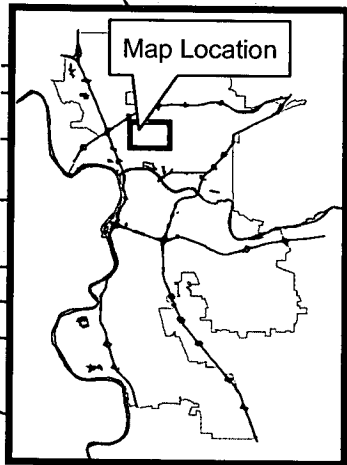
RESOLUTION NO.: _____

DATE ADOPTED: _____

5



City of Sacramento
Department of Parks and Recreation
 Strauch Park



North Arrow

Parks & Recreation
 Department
 Geographic
 Information Systems
 O:\GIS_Projects\Parks\Projects\PPDD\park_counrep424.mxd
 April 24, 2003 jms

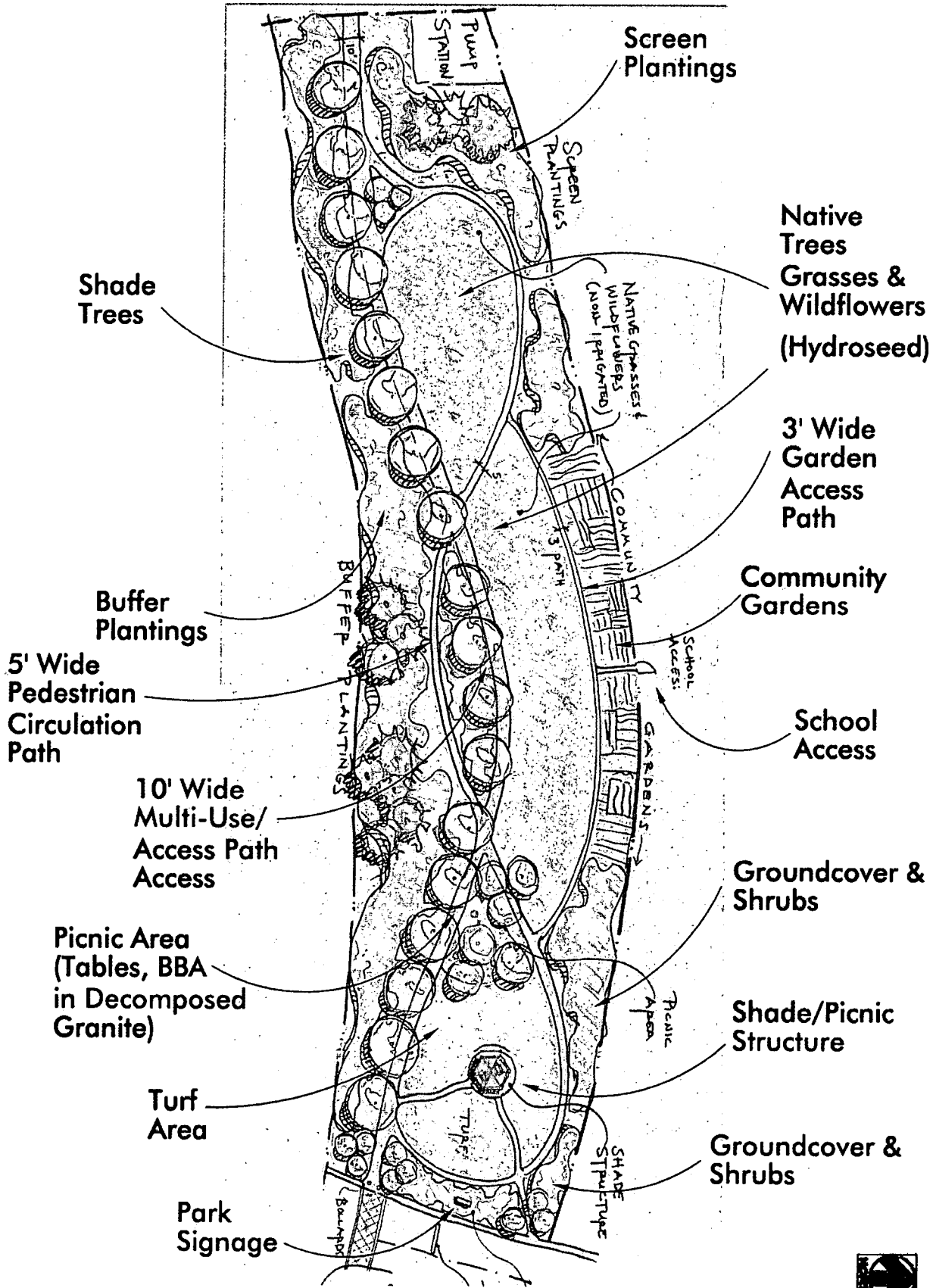
EXHIBIT A

6

Strauch Park

EXHIBIT B

Sacramento, California



Master Plan

December 2002
Carter-Burgess



EXHIBIT C

MITIGATION REPORTING PLAN

REVISED FEBRUARY 2003

In January 1989, Assembly Bill 3180 went into effect requiring the City to monitor all mitigation measures included in this Negative Declaration. For this project, mitigation reporting will be performed by the Department of Parks and Recreation in accordance with the monitoring and reporting program being developed by the City to implement AB 3180.

This **revised** Mitigation Reporting Plan is being prepared by the Department of Planning and Building, Environmental Planning Services, 1231 I Street, Suite 300, Sacramento, CA 95814, (916) 264-2762, pursuant to California Environmental Quality Guidelines Section 21081.

The Department of Parks and Recreation will submit their completed Reporting Plan to the Planning Services Division for inclusion in the Environmental Planning Services' annual report to City Council.

Project Number: LS04A-LS02

Project Name: Strauch Park

Project Location/Description: The project is 3.2 acres located adjacent to Hazel Strauch Elementary School, 3141 Northstead Drive, in the South Natomas Community Plan Area of the City of Sacramento (APN #225-0240-019-0000). The Department of Parks and Recreation's *2000 Master Plan for Park Facilities and Recreation Services* goals and policies, adopted in April 2000, identifies the site as a Neighborhood Park located adjacent to park compatible use areas. The Department of Parks and Recreation proposes to develop the site as usable park space and connect it with the adjacent joint use park site. Project components include: turf, groundcover, shrubs, community gardens, shaded picnic area, drinking fountain, with decomposed granite footpaths, and an improved multi-use (pedestrian path/maintenance road) trail. Security lighting and posting of regulations, as specified by the Sacramento Police Department, will be installed. Bollards will be installed at the Northstead Drive entrance to the park.

8

**MITIGATION REPORTING PROGRAM CHECKLIST
FOR STRAUCH PARK (CIP# LS02) NEGATIVE DECLARATION**

Impact/ Mitigation Measure	Reporting Milestone	Reporting/ Responsible Party	Verification of Compliance		
			Initials	Date	Remarks
<p>AIR QUALITY: Construction associated with the proposed project would not generate ozone and particulate matter emissions that exceed SMAQMD adopted significance criteria. However, the Sacramento City Code Section 15.040.050 requires any person with a permit to work take precautions to prevent and control movement of dust created by their work activities. In addition to the requirements of the Sacramento City Code, implementation of the following mitigation measures as stipulated by SMAQMD's Rule 403 on Fugitive Dust will reduce the impact to a less than significant level.</p> <p>Mitigation Measures</p> <ol style="list-style-type: none"> 1. Water active areas of the construction site twice daily to control wind borne dust. 2. Enclose, cover, or water twice daily any exposed piles of dirt, sand, gravel, or other construction debris. 3. At a minimum of three times per week, remove from all neighborhood streets, all dirt and mud which has been generated from or deposited by construction equipment going to and from the construction site. 4. Maintain all equipment and machinery in proper working order to reduce inefficient fuel burning and the creation of excessive odors. 	During Construction	Department of Parks and Recreation			

9

Impact/ Mitigation Measure	Reporting Milestone	Reporting/ Responsible Party	Verification of Compliance		
			Initials	Date	Remarks
5. Construction activities shall comply with SMAQMD rule 405 on condensed fumes, so that emissions do not exceed hourly levels as regulated per processing weight.					
6. On-site vehicle speed shall be limited to 15 miles per hour on unpaved surfaces.					
7. All trucks hauling site waste materials shall be covered securely.					
HAZARDS: No toxic substances or contaminated soils have been found on the project site; however, the following mitigation measures shall ensure a less-than-significant hazard impact.	During Construction	Department of Parks and Recreation			

MITIGATION MEASURES

1. If contaminated soil and/or groundwater is encountered or if suspected contamination is encountered during project construction, work shall be halted in the area, and the type and extent of the contamination shall be identified. A qualified professional, in consultation with the appropriate federal, state, and/or local regulatory agencies shall then develop an appropriate method to remediate the contamination.
2. Strict on-site handling rules shall be implemented to minimize spills and keep potentially contaminated materials out of the drainage waterways.
3. Wastes and petroleum products used during construction shall be collected and removed from the project site in accordance with the Resource Conservation and Recovery Act regulations and Fed/OSHA standards.
4. A spill prevention plan shall be implemented to maintain the

Impact/ Mitigation Measure	Reporting Milestone	Reporting/ Responsible Party	Verification of Compliance		
			Initials	Date	Remarks
safety of the drainage waterways.					

HAZARDS: The dry nature of grasslands in the Natomas Basin during a typical northern California summer make fire hazards a potential risk. Grass and weeds within the project area are regularly mowed and disked to reduce the likelihood of fire starting, and if started, from spreading to neighboring fields and structures. The following mitigation measure will ensure that construction related activities will be less than significant.

MITIGATION MEASURES

1. Machinery used during construction would be maintained to prevent accidental sparks, and fire extinguishers would be kept onsite during all construction activities.

CULTURAL RESOURCES: The proposed project site is not located in a Primary Impact Area for cultural or historical resources according to the SGPU DEIR, V-5. The proposed project will not directly or indirectly destroy unique paleontological resources or site or unique geologic features. The project is not likely to disturb human remains, including those interned outside of formal cemeteries. The soil in this area is routinely disked, and therefore, not likely to disturb any potential resources.

During Construction

Department of
Parks and
Recreation

Mitigation Measures

1. If subsurface archaeological or historical remains are discovered during construction, work in the area shall stop immediately and a qualified archaeologist and a representative

Impact/ Mitigation Measure	Reporting Milestone	Reporting/ Responsible Party	Verification of Compliance		
			Initials	Date	Remarks
<p>of the Native American Heritage Commission shall be consulted to develop, if necessary, further mitigation measures to reduce any archaeological impact to a less than significant level before construction continues.</p> <p>2. If human burials are encountered, all work in the area shall stop immediately and the Sacramento County Coroner's office shall be notified immediately. If the remains are determined to be Native American in origin, both the Native American Heritage Commission and any identified descendants must be notified and recommendations for treatment solicited (CEQA Section 15064.5); Health and Safety Code Section 7050.5; Public Resources Code Section 5097.94 and 5097.98.</p>					

12