

This set of plans and specifications must be kept on the job at all times and it is unlawful to make any changes or alterations from the same without written permission from the City of Sacramento Sign Section.

For approval of this plan and specification SMALL you are held to permit or approve the violation of any City Ordinance or State Law.

All electrical work must be fully labeled or be of equivalent standards. N.E.C. Sec. 200.6 and comply with chapter 14, Div. 2 of Sacramento City Code.

EQUIPMENT MUST BE USED AS DESIGN INTENDED
ALL SIGN INSTALLATIONS ARE SUBJECT TO FIELD INSPECTIONS

FILE COPY

PER # 4909736
4909734

S: 20864
20865

REFERENCE 99 3354
12 JULY 1999

Specialty Sign Solutions SINCE 1946

PacificNeonCompany

1516 SIJIDA AVE., SACRAMENTO, CA 95815 • 916.927.0527 FAX 916.927.2414 ©1999

ALBERTSON'S #325
4830 J STREET
SACRAMENTO, CA

SIGNAGE PROPOSAL

A**ALBERTSONS LETTERS AND LOGO**

PRELIMINARY 12 JULY 1999

SCALE: 3/16" = 1'-0"

QUANTITY:
ONE (1) SET OF ILLUMINATED
LETTERS AND LOGO

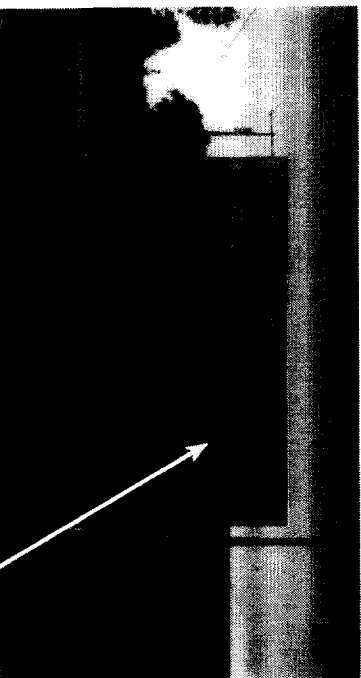
SPECIFICATIONS:
WHITE FORMED PLEX FACES WITH
TWO TONE BLUE VINYL OVERLAY
WITH WHITE OUTLINE AND WHITE 8
1/2" DEEP RETURNS

INTERNAL WHITE NEON
ILLUMINATION WITH SELF CONTAINED
TRANSFORMERS

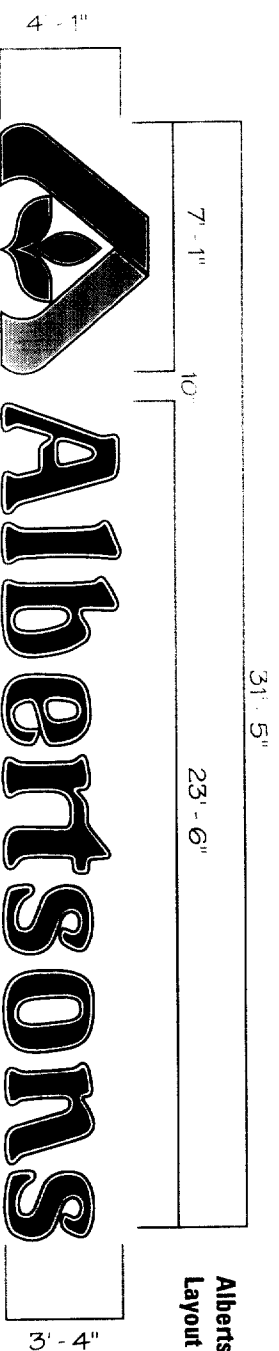
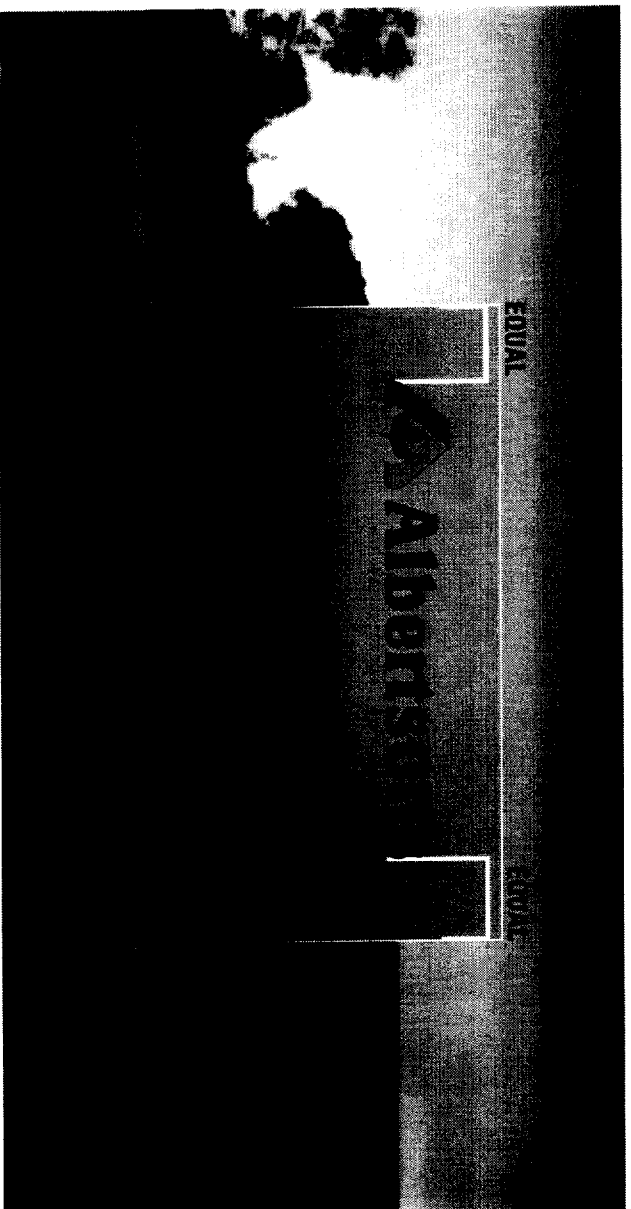
SQUARE FOOTAGE:
LOGO AREA: 27.7 SQ.FT.
6.4 AMPS @ 120V

ALBERTSONS AREA: 90.7 SQ.FT.
12.9 AMPS @ 120V

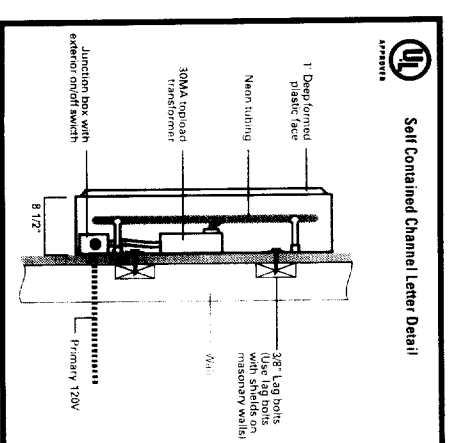
TOTAL AREA: 117.7 SQ.FT.
TOTAL ELECT. LOAD: 19.3 AMPS



Remove and dispose existing "Lucky" channel letter signage and replace new with Albertson's layout #2.



Albertson's
Layout #2.



PacificNeon & Signetics, Since 1942

PacificNeon Company

1576 SUCCA AVE. SACRAMENTO, CA 95815 - 916.927.0927 FAX 916.927.2414 ©1999

Page 1 OF 3

LOCATION 4830 J ST., SACRAMENTO, CA

ACCOUNT 99-3354 JOHN DRURY

CUSTOMER ALBERTSONS #525

DATE 12 JULY 99

ALL RIGHTS RESERVED AND NOT TO BE REPRODUCED OR TRANSMITTED IN ANY FORM OR BY ANY MEANS, ELECTRONIC OR MECHANICAL, INCLUDING PHOTOCOPYING, RECORDING, OR BY ANY INFORMATION STORAGE AND RETRIEVAL SYSTEM, WITHOUT PERMISSION IN WRITING FROM PACIFIC NEON COMPANY. ILLUSTRATIONS SUBJECT TO OURS. ONLY AND TO NOT BE REPRODUCED OR TRANSMITTED IN ANY FORM OR BY ANY MEANS, ELECTRONIC OR MECHANICAL, INCLUDING PHOTOCOPYING, RECORDING, OR BY ANY INFORMATION STORAGE AND RETRIEVAL SYSTEM, WITHOUT PERMISSION IN WRITING FROM PACIFIC NEON COMPANY.

B**ALBERTSONS LETTERS AND LOGO**

PRELIMINARY 12 JULY 1999

SCALE: 3/16" = 1'-0"

QUANTITY:
ONE (1) SET OF ILLUMINATED
LETTERS AND LOGO

SPECIFICATIONS:
WHITE FORMED PLEX FACES WITH
TWO TONE BLUE VINYL OVERLAY
WITH WHITE OUTLINE AND WHITE 8
1/2" DEEP RETURNS

INTERNAL WHITE NEON
ILLUMINATION WITH SELF CONTAINED
TRANSFORMERS

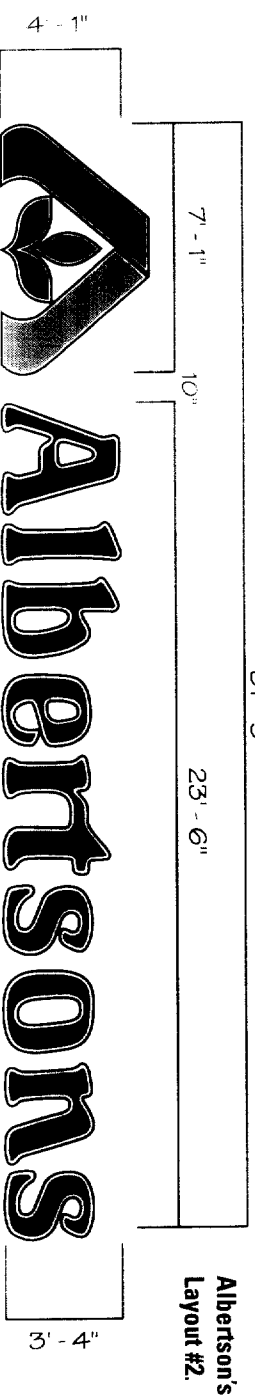
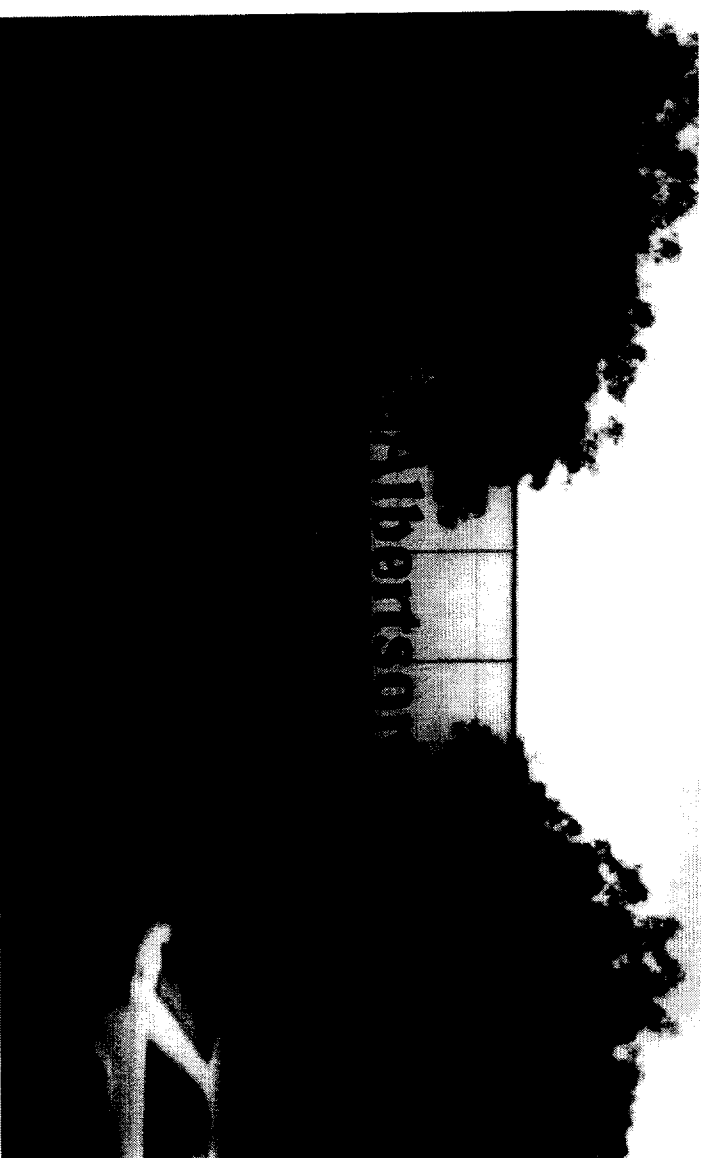
SQUARE FOOTAGE:
LOGO AREA: 27.7 SQ. FT.
Ø.4 AMPS @ 120V

ALBERTSONS AREA: 90.7 SQ. FT.
12.9 AMPS @ 120V

TOTAL AREA: 117.7 SQ. FT.
TOTAL ELECT. LOAD: 19.3 AMPS



Remove and dispose existing "Lucky" channel letter
signage and replace new with Albertson's layout #2.



4'-1"

3'-4"

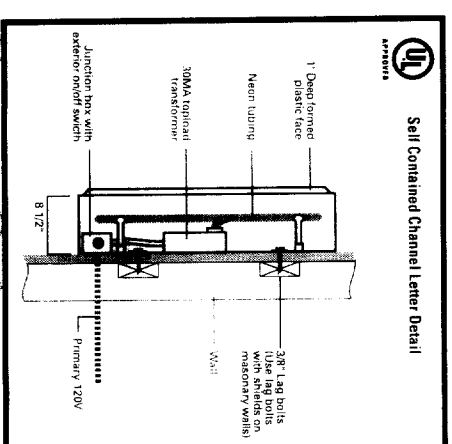
Albertson's
Layout #2.

CLIENT: ALBERTSONS #325
DATE: 12 JULY 99

ACCOUNT: 99-3354 JOHN DRURY

LOCATION: 4830 J ST., SACRAMENTO, CA

PAGE: 1 OF 3



Pacific Neon Company SINCE 1946

Pacific Neon Company

1576 SUCK AVE. SACRAMENTO, CA 95815 • 916.927.0577 FAX 916.927.2414 ©1999

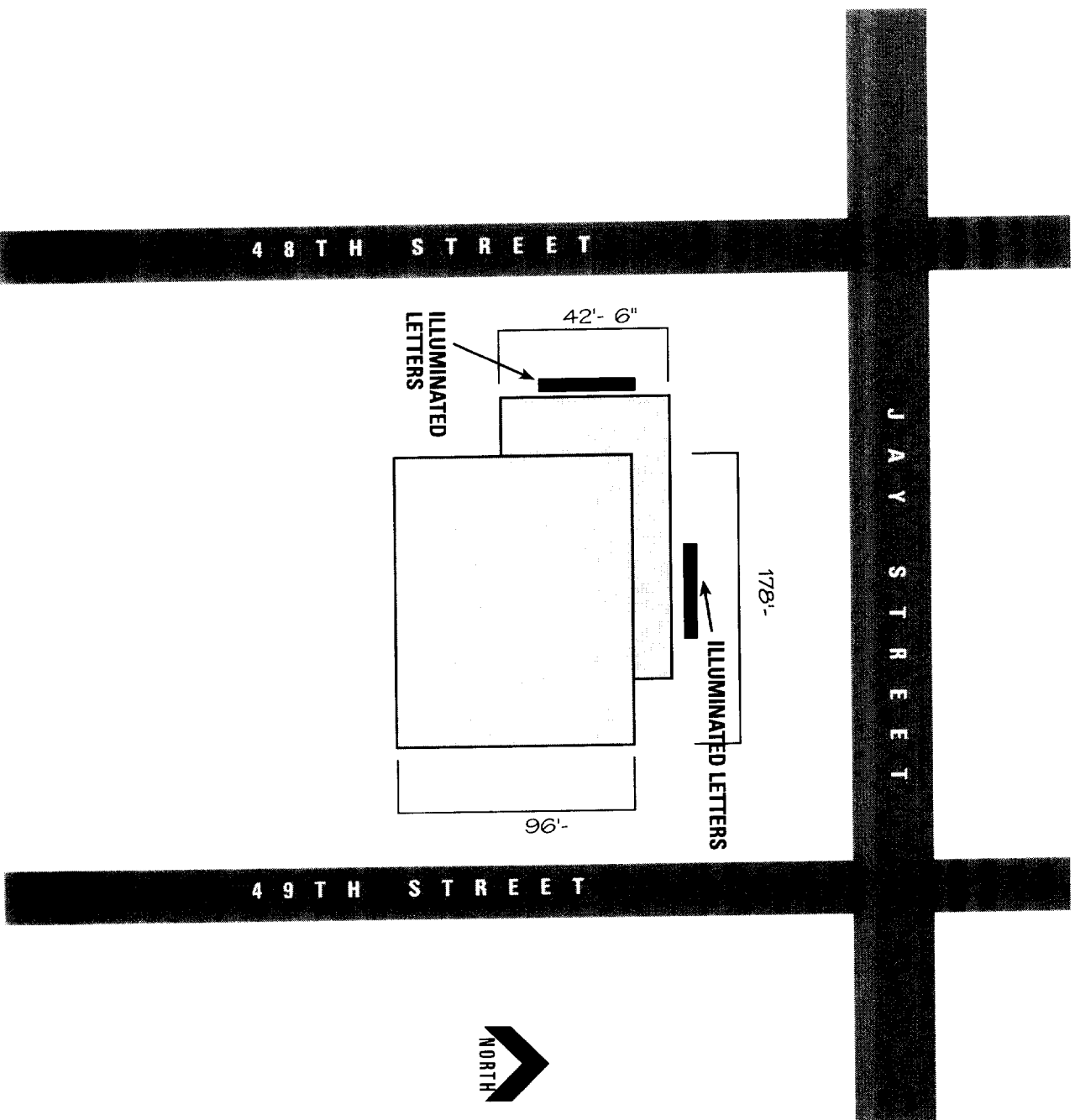
ALL RIGHTS RESERVED AND WHERE APPLICABLE THE COMPANY IS NOT BE RESPONSIBLE FOR THE USE OF THIS INFORMATION AND IS DISCLOSED OR USED FOR ANY PURPOSE WITHOUT PRIOR WRITTEN CONSENT OF PACIFIC NEON COMPANY. ILLUSTRATIONS DEPICT CONCEPT ONLY AND IS NOT INTENDED FOR FABRICATION. ©1999

SITE PLAN / SIGNAGE LOCATION

PRELIMINARY 12 JULY 1999

SCALE: NONE

**QUANTITY:
FABRICATE AND INSTALL SIGNAGE AS
INDICATED**



CLIENT ALBERTSONS #3225

DATE 12 JULY 99

ACCOUNT 99-3354 JOHN DRURY

LOCATION 4830 J ST. SACRAMENTO, CA

PAGE 3 OF 3

1576 SULLY AVE. SACRAMENTO, CA 95815 • 916.927.0527 FAX 916.927.2414 ©1999

PacificNeonCompany

PacificNeonCompany SINCE 1948

ALL DESIGN CONCEPTS AND WRITTEN MATERIALS ARE CONFIDENTIAL AND ARE THE SOLE PROPRIETARY PROPERTY OF PACIFIC NEON COMPANY. NO REPRODUCTION MAY BE MADE OR DISTRIBUTED OR USED FOR ANY PURPOSE WITHOUT THE WRITTEN CONSENT OF PACIFIC NEON COMPANY. ILLUSTRATIONS DEPICT CONCEPTS ONLY AND IS NOT INTENDED FOR FABRICATION. ©1999