



APPROVED
BY THE CITY COUNCIL

JUN 9 1998

1.12

OFFICE OF THE
CITY CLERK

DEPARTMENT OF
FINANCE

PROCUREMENT SERVICES DIVISION

CITY OF SACRAMENTO
CALIFORNIA

June 9, 1998

PS:Admin:98030:RBH:CS:bd

5730 - 24TH STREET
BUILDING FOUR
SACRAMENTO, CA
95822-3699

PH 916-433-6240
FAX 916-399-0263

City Council
Sacramento, California

Honorable Members in Session:

**SUBJECT: ADOPTION OF SPECIFICATIONS AND AWARD OF BID NO. 1778 FOR TWO (2)
REAR LOADING REFUSE TRUCKS IN A TOTAL AMOUNT OF \$252,081.13**

LOCATION AND COUNCIL DISTRICT: City-wide; All districts

RECOMMENDATION:

Staff recommends that the City Council adopt specifications and accept the lowest responsible bid for the contract resulting from Bid No. 1778 for two (2) Rear Loading Refuse Trucks. Award is recommended to F.B. Hart Co., Inc., 1441 Richards Blvd., Sacramento, CA 95814, in a total amount not to exceed \$252,081.13.

CONTACT PERSONS: Robert Summersett, Fleet Superintendent, 433-6309
Chris Slay, Buyer, 433-6344

FOR COUNCIL MEETING: June 9, 1998

SUMMARY:

Attached is a tabulation of sealed proposals received by the City Clerk for furnishing vehicles in accordance with the specifications used in the bidding process, and recommendation for award of Bid No. 1778 for two (2) Rear Loading Refuse Trucks.

BACKGROUND:

These replacement refuse trucks are being purchased by the Maintenance Services Division (Fleet Operations) of the Department of Public Works for use by the Solid Waste Division. They will be used by City staff in the collection of residential garden waste.

Staff recommends that the contract be awarded to F.B. Hart Co., Inc., 1441 Richards Blvd., Sacramento, CA 95814, for a Leach 2RII body/compactor and Volvo WXL64 cab/chassis in a total amount not to exceed \$252,081.13. Theirs was the lowest responsible bid received as shown in the attached bid tabulation sheet. It is also requested the City Council authorize subsequent purchases of identical units under the same terms and conditions within 365 days of award providing such purchases have been approved and budgeted by the City Council.

FINANCIAL CONSIDERATIONS:

Sufficient funds are available in the Fleet and Facility Management Division's FY97/98 budget for new and replacement vehicles/equipment.

ENVIRONMENTAL CONSIDERATIONS:

Ongoing administrative and maintenance activities, such as purchases of supplies, equipment or materials which are not made for purposes of a public works construction project, do not constitute a "project" and are exempt from the California Environmental Quality Act (CEQA). CEQA Guidelines, Sections 15061(b)(1), 15378(b)(3).

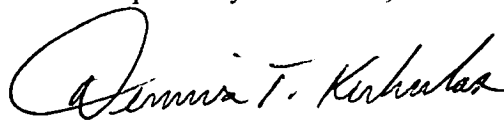
POLICY CONSIDERATIONS:

This recommendation is consistent with the requirements for competitive bidding as detailed in Title 57 of the Sacramento City Code.

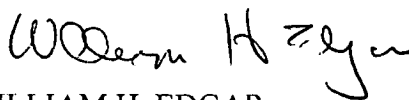
MBE/WBE EFFORTS:

Requests for bid (RFB) were sent to six (6) vendors, none of which were identified as M/WBE firms. No M/WBE firms were known or listed in the City Bid Directory that supply this type of vehicle. F.B. Hart Co., Inc., is not an M/WBE firm.

Respectfully Submitted,


for Robert B. Holbrook
Procurement Services Manager

RECOMMENDATION APPROVED:


WILLIAM H. EDGAR
City Manager

1 Attachment

**BID TABULATION SHEET FOR
BID NO. 1778 - TWO (2) REAR LOADING REFUSE TRUCKS**

<u>Bidder</u>	<u>Unit Price</u>	<u>Total, less Sales Tax</u>	<u>M/WBE</u>	<u>Prompt Payment Discount</u>	<u>1% City Tax Preference</u>	<u>Evaluation Total</u>
South Bay Truck Center, Inc.	\$137,255.00	\$274,510.00	No	1/2% - 20 days <\$1,372.55>	No	\$273,137.45
F. B. Hart Co., Inc.	\$116,975.00	\$233,950.00	No	\$2,000.00 ea - 20 days <\$4,000.00>	<\$2,339.50>	<u>\$227,610.50</u>

Award of Contract to: F. B. Hart Co., Inc.
1441 Richards Blvd.
Sacramento, CA 95814

Total Bid Amount: \$252,081.13 (includes Sales Tax)

Original Estimated Cost: \$220,000.00

Using Department: Fleet Operations for Garden Refuse

Total Amount of Contract: \$252,081.13⁽¹⁾

Bid Due Date: May 20, 1998

⁽¹⁾The City Council hereby authorizes subsequent purchase(s) of identical units under the same terms and conditions within 365 days of award providing such purchase(s) has/have been approved and budgeted by the City Council.

<u>Total No. of Bids Solicited</u>	<u>No. of M/WBE Bids Solicited</u>	<u>No. of M/WBe Responses</u>	<u>Award to M/WBE Vendor</u>
6	None Known or Listed	None	No

D **DEMPSTER**[®]

A Division of Toccoa Metal Technologies, Inc.

P.O. Box 1388 Toccoa, GA 30577

Phone: (706) 886-2327 FAX: (706) 886-0088



ROUTEKING II[™] **High-Compaction Rear Loader**

- Large capacity 3 cubic yard hopper
 - Pre-crushing in the hopper
- Swing-link packer design eliminates slides, tracks and rollers
 - Proven evolutionary design

The Tools of The Trade[©]

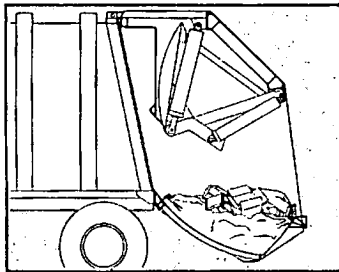
ROUTEKING II™ High-Compaction Rear Loader

FEATURES

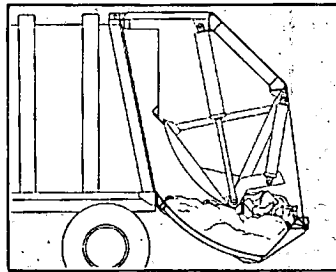
- Pre-packs in the hopper
- Swing link packer design instead of slides, rollers and tracks
- Large 3 cu. yd. hopper
- Single lever packer control
- Extra heavy-duty hopper floor and sides with wear laminate
- Full welded body and tailgate
- Rugged, full-stroke ejection

BENEFITS

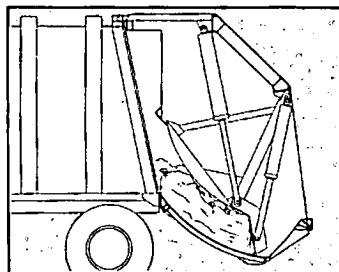
- Higher payload
- Jam-free packing
- Faster loading
- Operator ease
- Longer hopper life
- Stronger, eliminates rust
- Easy, fast ejection



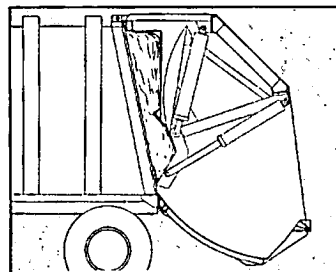
Hopper Packing Sequence.
Start. Packer blade moves upward.



Mid-cycle. Blade moves to rear and down, stops automatically above loading sill.



Pre-pack. Blade pre-crushes material against the reinforced hopper floor.



Pack. Refuse is forced upward and packed into body.

MATERIAL SPECIFICATIONS

(HIGH-TENSILE STEEL)	MODELS	THICKNESS	
Body Floor	20 & 25 32	10 ga. 7 ga.	(3.4 mm) (4.6 mm)
Sidewalls		11 ga.	(3.0 mm)
Roof		12 ga.	(2.7 mm)
Ejector Panel		10 ga.	(3.4 mm)
TAILGATE:			
Sidewall, Tailgate		10 ga.	(3.4 mm)
Sidewall, Hopper		.25 in.	(6.3 mm)
Floor, Hopper		.25 in.	(6.3 mm)
Packer Blade Face		.38 in.	(9.5 mm)
Link Shield Face		.25 in.	(6.3 mm)

HYDRAULIC SYSTEM

CAPACITY:

Total System	80 gal.	(303 L)
Oil Reservoir	69 gal.	(261 L)

PRESSURE & FLOW:

System Rating	2300 PSI @ 60.6 PM
---------------	--------------------

FILTRATION:

	15858 KPA @ 227.1LPM
--	----------------------

Return Line Filter	10 Micron
--------------------	-----------

Suction Line Strainer	100 Mesh
-----------------------	----------

CYLINDERS:

Ejector	Multi Stage Telescopic
---------	------------------------

Tailgate Lift	4.0 in. x 37 in., 3.5 in.
---------------	---------------------------

Packer Blade	(101.6 mm x 939.8 mm x 88.9 mm)
--------------	---------------------------------

	5.0 in. x 27 in., 3 in.
	(127 mm x 686 mm, 76.2 mm)

Link Shield	6.0 in. x 34 in., 2.5 in.
	(152.4 mm x 864 mm, 63.5 mm)

PERFORMANCE SPECIFICATIONS:

Packing Cycle	24-26 sec.
---------------	------------

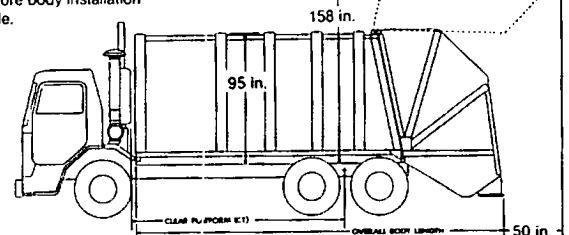
Reload Time	10-12 sec.
-------------	------------

PUMPS: Crankshaft Driven and Transmission PTO
Pumps of Various Manufacturers Available

BODY SPECIFICATIONS

MODELS		20	25	32
COMPACTION VOLUME	cu. yd. (cu. m)	20.1 (15.4)	25.1 (19.2)	32.1 (24.5)
BODY WEIGHT	lbs. (kg)	12,500 (5670)	13,400 (6078)	15,500 (7031)
OVERALL BODY LENGTH	in. (mm)	232 (5969)	268 (6807)	316 (8026)
BODY HEIGHT ABOVE CHASSIS (Without Options)	in. (mm)	95 (2413)	95 (2413)	95 (2413)
CHASSIS REQUIREMENTS:¹				
CLEAR PLATFORM²	in. (mm)	115-125 (2921-3175)	140-160 (3556-4064)	180-210 (4572-5334)
MIN. FRAME CUT-OFF (Rear-most Axle to Frame End)	in. (mm)	22 (559)	22 (559)	22 (559)
RECOMMENDED GAWRF	lbs. (kg)	12,000 (5443)	16,000 (7257)	18,000 (8165)
RECOMMENDED GAWRR	lbs. (kg)	32,000 (14515)	34,000 (15422)	44,000 (19958)

TRANSMISSION NOTE: Chassis equipped with Allison Automatic Transmissions must have a torque converter lock up, and a neutral to range inhibitor is recommended before body installation can be made.



¹CONTACT DEMPSTER INC. for additional details and other applications.

²CLEAR PLATFORM (CT) is the dimension from any item (muffler, transmission shifter housing, etc.) extending behind the cab and above the top of the frame which will interfere with body mounting, to the center line of the trunion of the tandem axle.

All designs, specifications and components are subject to change at the manufacturer's sole discretion at any time without notice. Data published herein is informational in nature and shall not be construed to warrant suitability of the unit for any particular purpose as performance may vary with the conditions encountered.

DEMPSTER®

A Division of Toccoa Metal Technologies, Inc.

P.O. Box 1388 Toccoa, GA 30577

Phone: (706) 886-2327 FAX: (706) 886-0088

DEMPSTER, INC. P.O. I

Phone: (706) 886-2327 / FAX: (706) 886-0088

LET

Low Entry Tilt HEAVY DUTY SPECIFICATIONS

BASE MODEL

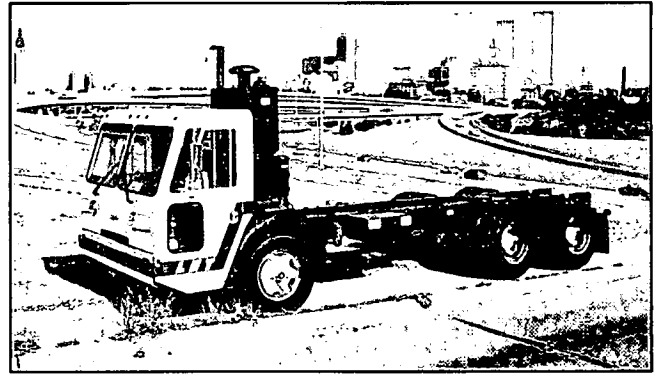


Illustration representative of model, but not necessarily of these specifications

GENERAL DATA

POWER SYSTEM

ENGINE, model	Caterpillar 3116
• Horsepower	250
• Governed Speed, r.p.m.	2600
• Lube Oil Filter, Spin-on type	Full Flow
• Air Compressor, c.f.m.	13.2
TRANSMISSION, model	Allison-M1653DR
• Gearing	5 Forward, 1 Reverse
• Filter, Transmission mounted	Spin-on
• Oil Cooler, In tank	Water to Oil
RADIATOR	
• Frontal Area, sq. in.	1200
• Core, Serpentine, Louvered fins	2 Row
• Location, Behind cab	Remote
PROPELLER SHAFT, series	SPICER 1710
AIR CLEANER, Intake above cab	Donaldson-9" EBA
EXHAUST, Mounted above frame	Vertical
FUEL TANK	
• Capacity, gal.	60
• Mounting, shape	Right Side-Rectangular

FRAME

STRUCTURAL CHANNEL, size, in.	10 x 3 3/8
• Yield Strength, psi	100,000
• Section Modulus, in ³	22.0
• R.B.M. (resistive bending moment) in - lbs. per rail	2,200,000
LENGTH ft.	27
CROSSMEMBERS, Construction	Tubular

BUMPER, Steel channel, in.	12
GROUND CLEARANCE, in.	20
TOW PINS, Front, Mounted through frame	2

AXLES-SUSPENSION

FRONT AXLE, model	EATON-EFA 20F4
• CAPACITY, lbs.	20,000
• WHEEL CUT, degrees	46
FRONT SUSPENSION	CCC
• Capacity, At spring pag, lbs.	22,000
• Springs, Flat leaf size, in.	4x50
• Shock Absorbers bore in.	1 3/4
SINGLE REAR AXLE	
• Axle, model	EATON-2610S5
• Capacity, lbs.	26,000
• Suspension, model	REYCO-102CC
• Capacity, lbs.	26,000
TANDEM REAR AXLE	
• Axle, model	EATON DS405
• Capacity, lbs.	40,000
• Suspension, model	HENDRICKSON RS400
• Capacity, lbs.	40,000

BRAKES

FRONT, S-CAM in.	16 5/8
REAR, S-CAM, in.	16 5/7
DRUMS	Cast Iron
PARKING BRAKE, Rear axles	Spring Loaded
SLACK ADJUSTERS	Auto

RESERVOIR CAPACITY	
• Single Axle, cu in.	5361
• Tandem Axle, cu in.	5636

TIRES & WHEELS

FRONT TIRES, Highway tread, size	315/80 R22.5-18 Ply
REAR TIRES, Highway tread, size	10.00 x 20-12 Ply
WHEELS, Front and Rear	Cast Spoke
RIMS, Front, dia x width, in.	22.5 x 9.0
• Rear dia x width, in.	20x8 HD

STEERING

POWER STEERING GEAR, model	Sheppard 592-S
CAPACITY, lbs.	20,000
HYDRAULIC PUMP	Coupling Driven
RESERVOIR CAPACITY, qt.	16

ELECTRICAL

SYSTEM type, voltage	Negative Ground-12V
ALTERNATOR, Delco 21SI, amps	100
STARTER, Delco 42 MI	Type 400
BATTERIES, 3 GRP 31, AHF	CCA 2100
BATTERY CABLES, Dual bath, size	000

PAINT

CAB, Polyurethane	CCC White
FRAME, WHEELS, BUMPER, EXHAUST, INTAKE, ENGINE COVER, FENDERS, Acrylic	Flat Black

STANDARD EQUIPMENT

CAB

- LOW ENTRY
- 18" FLOOR HEIGHT BOTH SIDES
- 60" HYDRAULIC TILT
- AUTOMATIC LOCK AND LATCH
- WINDSHIELD AREA 2.500 SQ. IN.
- RETRACTABLE SEAT BELTS W/SHOULDER HARNESS
- SUN VISORS
- 40,000 BTU HEATER DEFROSTER
- 18" NON-ADJUSTABLE STEERING WHEEL
- PASSENGER SEAT
- DUAL AIR WINDSHIELD WIPERS, WASHERS
- ELECTRIC HORN
- TWO FRONT VENTS 12" x 5"
- TWO 6" x 16" WEST COAST MIRRORS
- 4-WAY ADJUSTABLE DRIVER'S SEAT
- ASH TRAY
- DOORS OPEN 90°, SLIDING WINDOWS
- LOWER VIEW WINDOWS IN DOORS
- ENGINE HAND THROTTLE

INSTRUMENTS

- ELECTRIC SPEEDOMETER/ ODOMETER
- ELECTRICAL GAUGES FOR
- FUEL
- ENGINE WATER TEMPERATURE
- OIL PRESSURE
- VOLTMETER
- TACHOMETER
- ENGINE HOURMETER
- AIR RESTRICTION INDICATOR MOUNTED ON AIR FILTER
- DUAL AIR PRESSURE GAUGE
- WARNING ALARM & LIGHTS FOR
- LOW AIR PRESSURE
- LOW OIL PRESSURE & HIGH WATER TEMPERATURE
- WARNING LIGHT FOR
- PARKING BRAKE ON
- TRANSMISSION IN NEUTRAL
- TRANSMISSION OIL TEMPERATURE
- TANDEM AXLE INTERLOCK ENGAGED

ELECTRICAL LIGHTING

- FIVE CLEARANCE LIGHTS
- FRONT TURN SIGNALS
- TWO DOME LIGHTS
- DIMMER SWITCH ON STEERING COLUMN
- SIGNAL BUZZER FOR BODY
- TWO WAY RADIO POWER FEED
- TWO SWITCHES IN CAB WIRED TO OUTSIDE
- ROUND HEADLIGHTS
- MANUAL RESET CIRCUIT BREAKERS
- SEPARATE CIRCUIT BREAKERS FOR
- STOP LIGHTS
- TAIL LIGHTS
- BACKUP LIGHTS
- TURN SIGNALS
- CLEARANCE LIGHTS

MISCELLANEOUS

- LATERAL TORQUE RODS
- STEMCO OIL SEALS
- GATE TYPE TRANSMISSION CONTROLS
- WILLIAMS AIR THROTTLE CONTROL



OPTIONAL COMPONENTS

■ ENGINES

- (VARIOUS HORSEPOWER)
- CUMMINS
 - CATERPILLAR
 - DETROIT

■ TRANSMISSIONS

- AUTOMATIC-ALLISON
- MT600 SERIES, HT700 SERIES
 - MD, HD SERIES
 - ATEC CONTROLS RETARDERS

■ FRONT AXLES

- EATON - 12,000 lb
- ROCKWELL - 20,000 lb
- TWIN STEERING AXLES

■ REAR AXLES

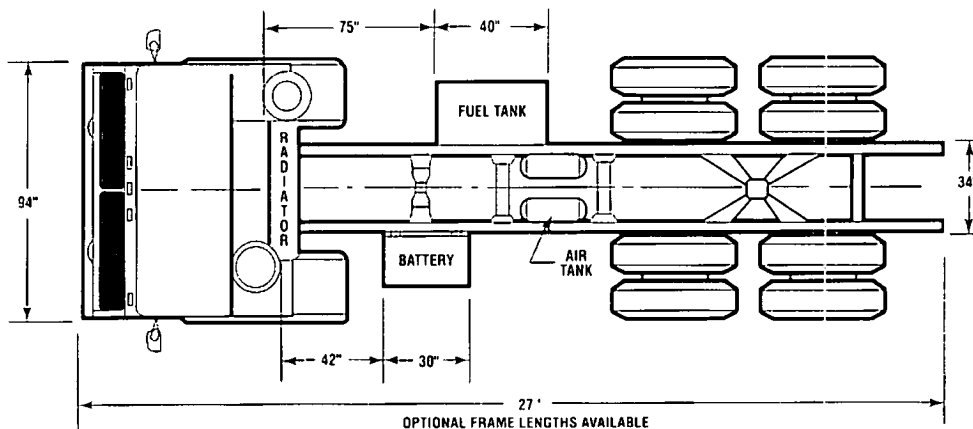
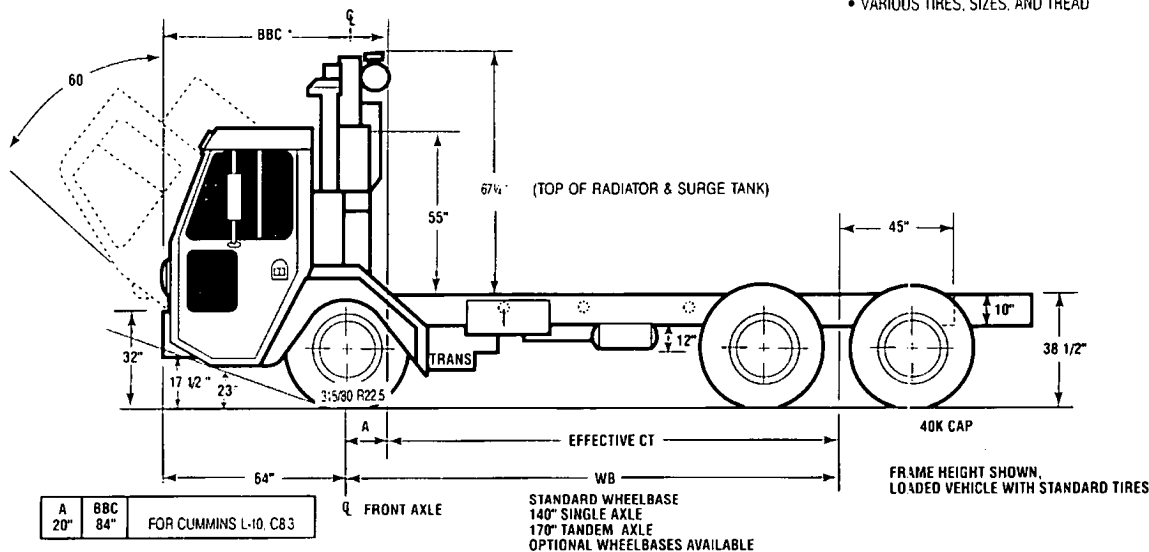
- SINGLE
- EATON - 19,000 to 30,000 lb.
 - ROCKWELL - 23,000 to 30,000 lb.
- TANDEM
- EATON - 40,000 to 52,000 lb.
 - ROCKWELL - 40,000 to 52,000 lb.

■ REAR SUSPENSIONS AVAILABLE

- SINGLE
- REYCO, Three Torque Rod, 30,000 lb.
 - RIDEWELL, 30,000 lb.
- TANDEM
- HENDRICKSON, RS & RT 40,000 to 52,000 lb.
 - RIDEWELL - 40,000 to 52,000 lb.

■ MISCELLANEOUS OPTIONS

- AIR CONDITIONING
- AIR DRYER
- AIR HOSE
- ALCOHOL INJECTOR
- AUTOMATIC DRAIN VALVES
- BATTERY DISCONNECT
- BI-FOLD DOORS, LH & RH
- BLOCK HEATER
- CCC NEUTRAL COMMAND
- CREW CAB
- DISC ALUMINUM, FRONT AND REAR
- DISC WHEELS FRONT AND REAR
- DRIVER SEAT, AIR RIDE OR T-BAR
- DRIVING POSITIONS, LH & RH
- ETHER START
- FAN, DASH MOUNTED
- FIRE EXTINGUISHER
- FUEL/WATER SEPARATOR
- HAND CONTROL BRAKE VALVE
- VARIOUS TIRES, SIZES, AND TREAD



Specifications Subject To Change Without Notice

LET 4/97



CRANE CARRIER COMPANY, P.O. BOX 582891, TULSA, OK. 74158 (918) 836-1651