

13



CITY OF SACRAMENTO

DEPARTMENT OF PUBLIC WORKS

RECEIVED
CITY CLERKS OFFICE
CITY OF SACRAMENTO

AUG 29 8 56 AM '85

ENGINEERING DIVISION

THOMAS M. FINLEY
Engineering Division Manager

August 19, 1985

City Council
Sacramento, California

CITY MANAGER'S OFFICE
RECEIVED
AUG 28 1985

Honorable Members In Session:

SUBJECT: Approval of Final Parcel Map of a Portion of Lot A, Fruitridge Oaks Unit No. 8 (142BM2), Located at the N/W Corner of Stockton Boulevard and Perry Avenue (P=84-401)

SUMMARY

It is requested that the City Council adopt a Resolution approving the final Parcel Map for a portion of Lot A, Fruitridge Oaks Unit No. 8. Adoption of the Resolution is recommended.

BACKGROUND

On December 18, 1984, the City Council approved a tentative Parcel Map by adopting Resolution No. 84-1038.

All conditions and stipulations set forth in the staff subdivision report have been complied with and all improvements have been installed and accepted by the Director of Public Works. The final Parcel Map is now being presented for final approval.

FINANCIAL

All costs pertaining to the subdivision are being paid by the subdivider.

APPROVED
BY THE CITY COUNCIL

SEP - 3 1985

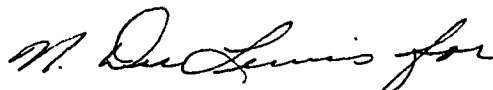
OFFICE OF THE
CITY CLERK

City Council
Approval of Final Parcel Map of Fruitridge
Oaks Unit No. 8
August 19, 1985
Page 2

RECOMMENDATION

It is recommended that the attached Resolution approving the final Parcel Map be adopted.

Respectfully submitted,



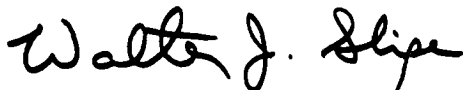
THOMAS M. FINLEY
Engineering Division Manager

Approved:



MELVIN H. JOHNSON
Director of Public Works

Recommendation Approved



WALTER J. SLIPE
City Manager

BF:yg
Attachments
Mon- B9

September 3, 1985
District 5

RESOLUTION NO. 85-662

ADOPTED BY THE SACRAMENTO CITY COUNCIL ON DATE OF

SEPTEMBER 3, 1985

APPROVING FINAL PARCEL MAP OF A PORTION OF LOT A,
FRUITRIDGE OAKS UNIT NO. 8 (P84-401)

WHEREAS, THE COUNCIL OF THE CITY OF SACRAMENTO FINDS AND DETERMINES
AS FOLLOWS:

A. The final Subdivision Map for a Portion of Lot A, Fruitridge Oaks Unit No. 8 (142BM2), together with provisions for its design and improvement, is consistent with the 1965 Fruitridge Community Plan.

B. The final map is in substantial compliance with the previously approved tentative map.

NOW, THEREFORE, BE IT RESOLVED BY THE COUNCIL OF THE CITY OF SACRAMENTO
AS FOLLOWS:

1. The final Parcel Map of a Portion of Lot A, Fruitridge Oaks Unit No. 8 (142BM2), be, and the same is hereby approved subject to the execution by all parties for that subdivision.

2. All offers of dedication shown on said map are hereby accepted.

 MAYOR

ATTEST:

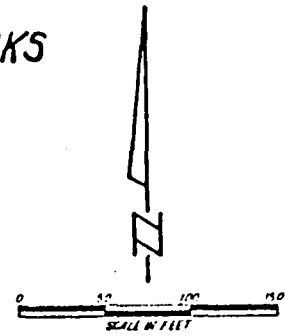
 CITY CLERK

APPROVED
 BY THE CITY COUNCIL

SEP - 3 1985

OFFICE OF THE
CITY CLERK

TENTATIVE PARCEL MAP
PORTION OF LOT A FRUITRIDGE OAKS
UNIT NO. 8 (142 B.M. 2)
 CITY OF SACRAMENTO, CALIFORNIA
 OCTOBER 1984 SCALE 1" = 50'
 MURRAY SMITH AND ASSOCIATES



OWNER/SUBDIVIDER: BOB BERRY, C/O SPACE SHUTTLE
 1435 RIVER PARK DRIVE, STE
 SACRAMENTO, CA 95815
 PHONE: 928-6578

ENGINEER: MURRAY SMITH & ASSOCIATES
 3020 EPPERLEY DRIVE
 SACRAMENTO, CA 95827
 PHONE: 361-3444

IMPROVEMENTS: AS REQUIRED BY THE CITY OF
 DEPARTMENT OF PUBLIC WORKS

PRESENT EDING: C-4

EXISTING USE: VACANT

PROPOSED USE: LOT 1 RENT STORAGE
 LOT 2 COMMERCIAL

ASSESSOR'S PARCEL NO: 022-280-26

SEWAGE DISPOSAL: CITY OF SACRAMENTO

WATER SUPPLY: CITY OF SACRAMENTO

DRAINAGE: CITY OF SACRAMENTO

FIRE PROTECTION: PACIFIC FIRE

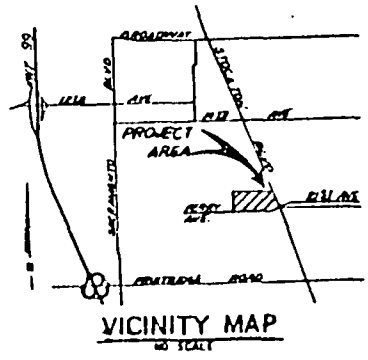
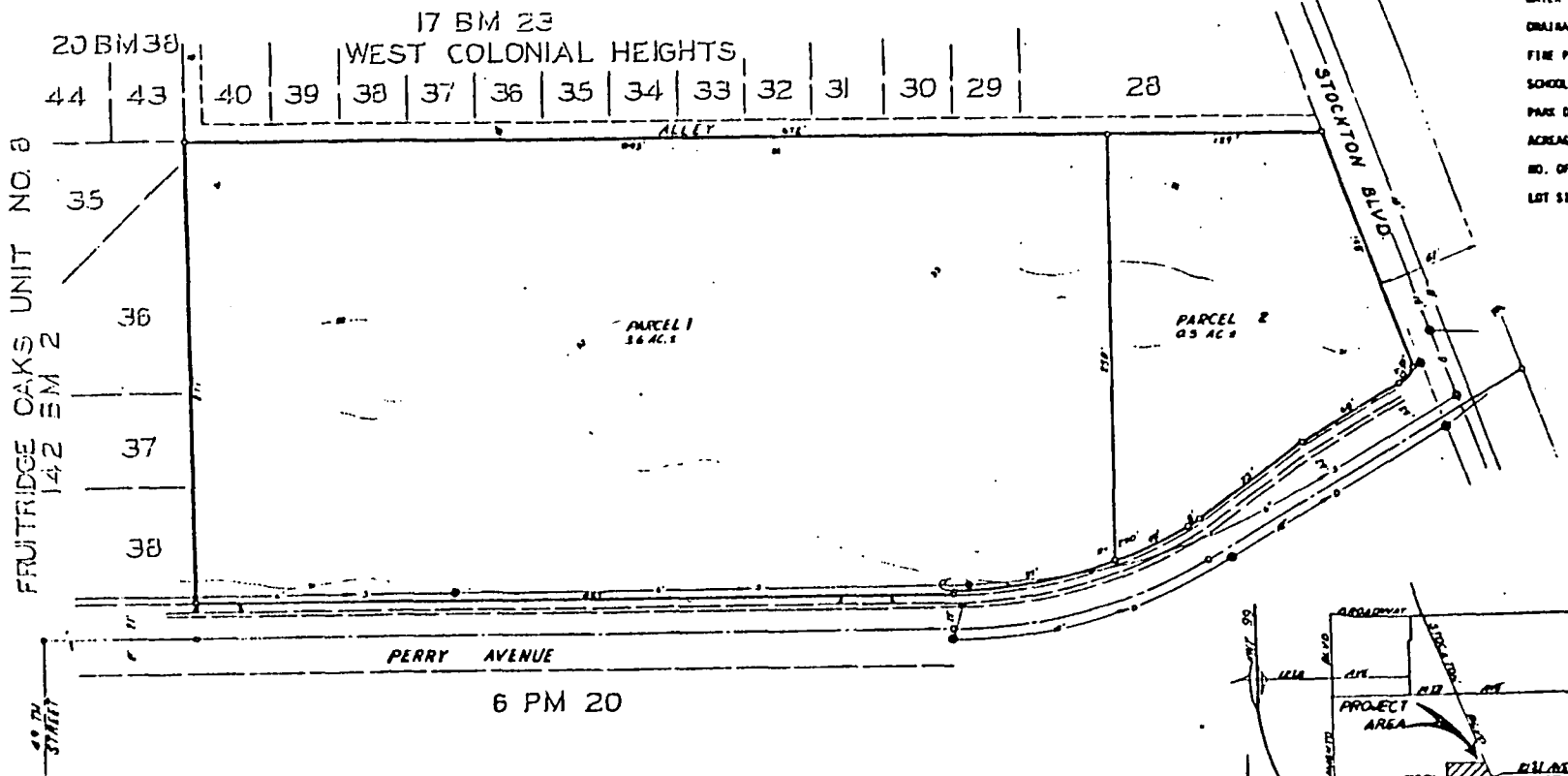
SCHOOL DISTRICT: SACRAMENTO UNIFIED

PARK DISTRICT: CITY OF SACRAMENTO

ACREAGE: 4.116 ACRES NET

NO. OF LOTS: 2

LOT SIZE: AS SHOWN



73-
 EX NO I
 CH COR
 LY OF
 A-17
 9.7
 TIGNED
 16
 SACRAM
 ALFOR
 DER DE
 PAGE 5
 TLE CO
 CERTIF