

APPROVED
BY THE CITY COUNCIL

FEB 9 1999

OFFICE OF THE
CITY CLERK



4.2

DEPARTMENT OF
PUBLIC WORKS

CITY OF SACRAMENTO
CALIFORNIA

927 10TH STREET
SACRAMENTO, CA
95814-2702

TECHNICAL SERVICES
DIVISION

PH 916-264-8300
FAX 916-264-8281

February 1, 1999

City Council
Sacramento, California

Honorable Members In Session:

SUBJECT: CSUS ACCESS PROJECT (PN: HB61) SUBMISSION OF THE PROJECT TO THE SACRAMENTO TRANSPORTATION AUTHORITY FOR CMAQ FUNDING, AND APPROVAL OF THE PREPARATION OF THE ENVIRONMENTAL STUDY AND PRELIMINARY ENGINEERING.

LOCATION AND COUNCIL DISTRICT:

California State University, Sacramento (CSUS), at Elvas Avenue and 65th Street, J Street and H Street between the American River and 55th Street. Council District 3.

RECOMMENDATION:

This report recommends that the City Council:

- Provide direction to staff on the submission of the project as a high priority Congestion Mitigation Air Quality (CMAQ) project; and
- Direct staff to prepare environmental analysis for the project and perform preliminary engineering.

CONTACT PERSON: Nicholas Theocharides, Senior Engineer, 264-5065

FOR COUNCIL MEETING OF: February 9, 1999

SUMMARY:

The CSUS Access Project will provide new bicycle and pedestrian access to the CSUS campus from the west, in the vicinity of Elvas Avenue and 65th Street, and bicycle safety improvements along H Street and J Street between 55th Street and the main campus entrance. The project will provide a direct pedestrian link between the CSUS athletic fields and the light rail station at 65th Street and a bicycle route from the downtown and East Sacramento area to the central campus and the Guy West bridge crossing of the American River.

The City has an opportunity to construct the project in time for the Olympic Trials, which are scheduled to begin in July 2000. Councilmember Cohn has requested that this project be brought to the City Council and considered for priority Congestion Mitigation Air Quality (CMAQ) Program funds.

COMMITTEE/COMMISSION ACTION:

None.

BACKGROUND INFORMATION:

PROJECT DESCRIPTION

Access to the CSUS campus is limited to the main entrance at J Street on the north, College Town Drive on the south, and the Guy West bicycle and pedestrian bridge at the American River on the east. The proposed CSUS Access Project will provide the following:

- A new bicycle and pedestrian access to CSUS from the west, by way of a tunnel crossing of the railroad levee, adjacent to Elvas Avenue at 65th Street;
- Pedestrian and bicycle facilities linking the 65th Street light rail station and M Street bicycle corridor to the central campus by way of the proposed tunnel crossing;
- A new bicycle connection along H Street, from the American River bike trail, to Carlson Drive, the River Park neighborhood, and 55th Street; and
- A new bicycle connection along the north side of J Street, between the CSUS main entrance at Carlson Drive and 55th Street.

TRANSPORTATION PROGRAMMING GUIDE

The 1998 Transportation Programming Guide (TPG) ranks bikeway projects in three different categories including on-street, off-street, and bridge crossings. The railroad levee crossing portion of the CSUS Access Project is the No. 2 ranked bridge crossing project and the J Street and H Street improvements are ranked as the No. 8 on-street bikeway project.

COST AND FUNDING

The project, which is estimated to cost \$2,900,000, is eligible for federal CMAQ funds. The current timeline for CMAQ project selection shows SACOG Board action on July 15, 1999. However, SACOG guidelines allow for acceleration of this schedule. Councilmember Cohn has requested that this project be brought to the City Council for consideration for early CMAQ funding, in order for the improvements to be constructed in time for the Olympic Trials. If the Council approves the nomination of the project for priority CMAQ funding, staff will submit a request for Sacramento Transportation Authority Board consideration of early funding.

FINANCIAL CONSIDERATIONS:

The CMAQ program requires an 11.5% local match of project costs, which is approximately \$335,000 for the subject project. It is estimated that an additional \$100,000 is needed for non-reimbursable project development expenses which will be incurred prior to federal authorization to proceed with the project.

As of January 27, 1999, the project budget had a balance of \$195,000. Staff is working to identify additional funding for the projected \$240,000 balance.

ENVIRONMENTAL CONSIDERATIONS:

The approval of the preparation of environmental studies and preliminary engineering is not considered a project as defined by Section 15378 of the California Environmental Quality Act guidelines. The activity involves no physical construction and has no potential to cause a significant impact on the environment.

POLICY CONSIDERATIONS:

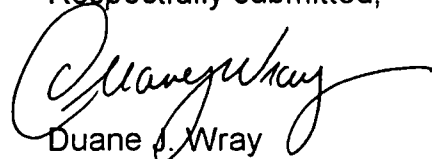
None.

City Council
CSUS Access Project
February 1, 1999

MBE/WBE:

No contracting or professional services are associated with this action.

Respectfully submitted,



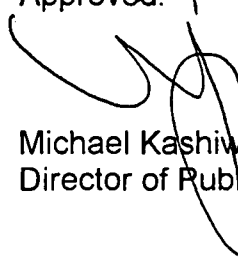
Duane J. Wray
Technical Services Manager

RECOMMENDATION APPROVED:



WILLIAM H. EDGAR
City Manager

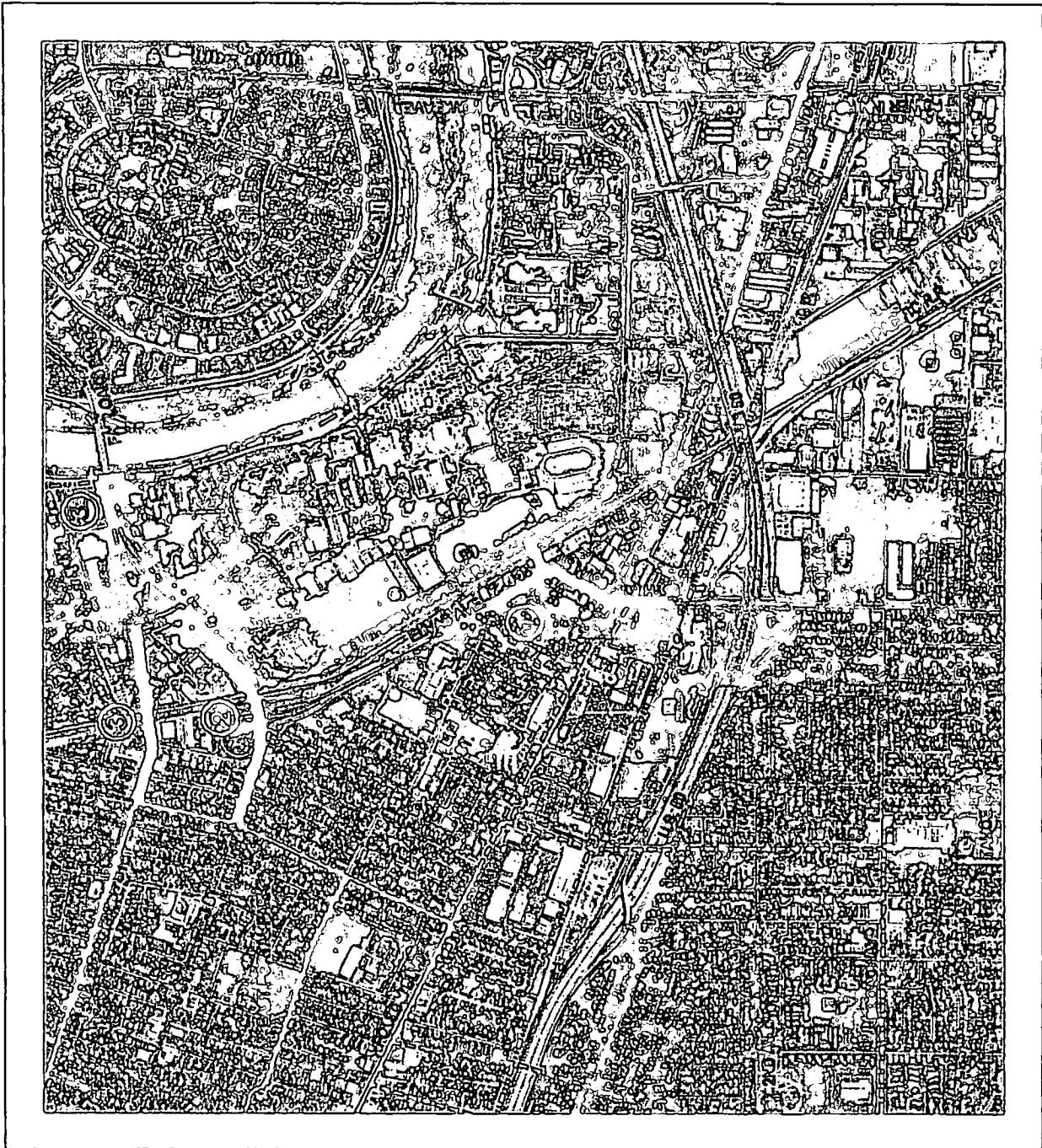
Approved:



Michael Kashiwagi
Director of Public Works

DW:NT:eaj
p\hb61\council\cmaq funding

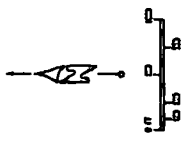
C.S.U.S. ACCESS PROJECT LOCATION MAP



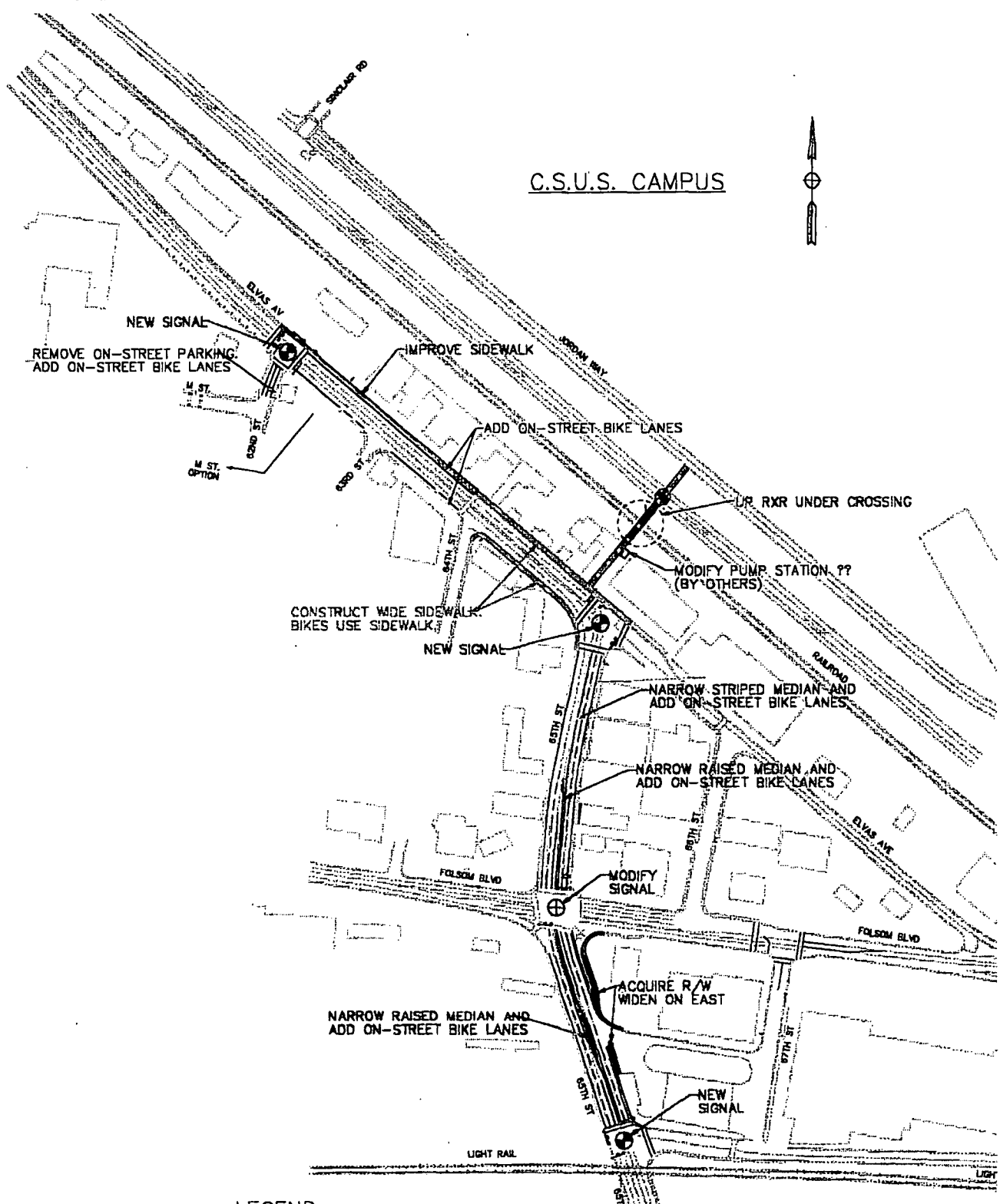
LEGEND	
EXISTING CLASS 1	—
EXISTING CLASS 2/3	—
PROPOSED CLASS 1	—
PROPOSED CLASS 2/3	—
PROPOSED BMP AMENDMENTS	—
CSUS ACCESS PROJECTS	—

PROPOSED CSUS BIKE/PED ACCESS PROJECTS

- ① 65th Street (Pump Station)
Underpass Alignment
- ② J Street Bikeway
Carlson Dr to 56th St
- ③ H Street Bikeway
H Street Bridge Bikeway Connection
(River Park to CSUS)
H Street, Camallia Ave to 55th St



C.S.U.S. CAMPUS



LEGEND

	NEW SIGNAL
	MODIFY EXISTING SIGNAL
	ACQUIRE R/W
	RECONSTRUCT RAISED MEDIAN
	WIDEN SIDEWALK (SHARED PED/BIKE USE)
	IMPROVE EXIST SIDEWALK

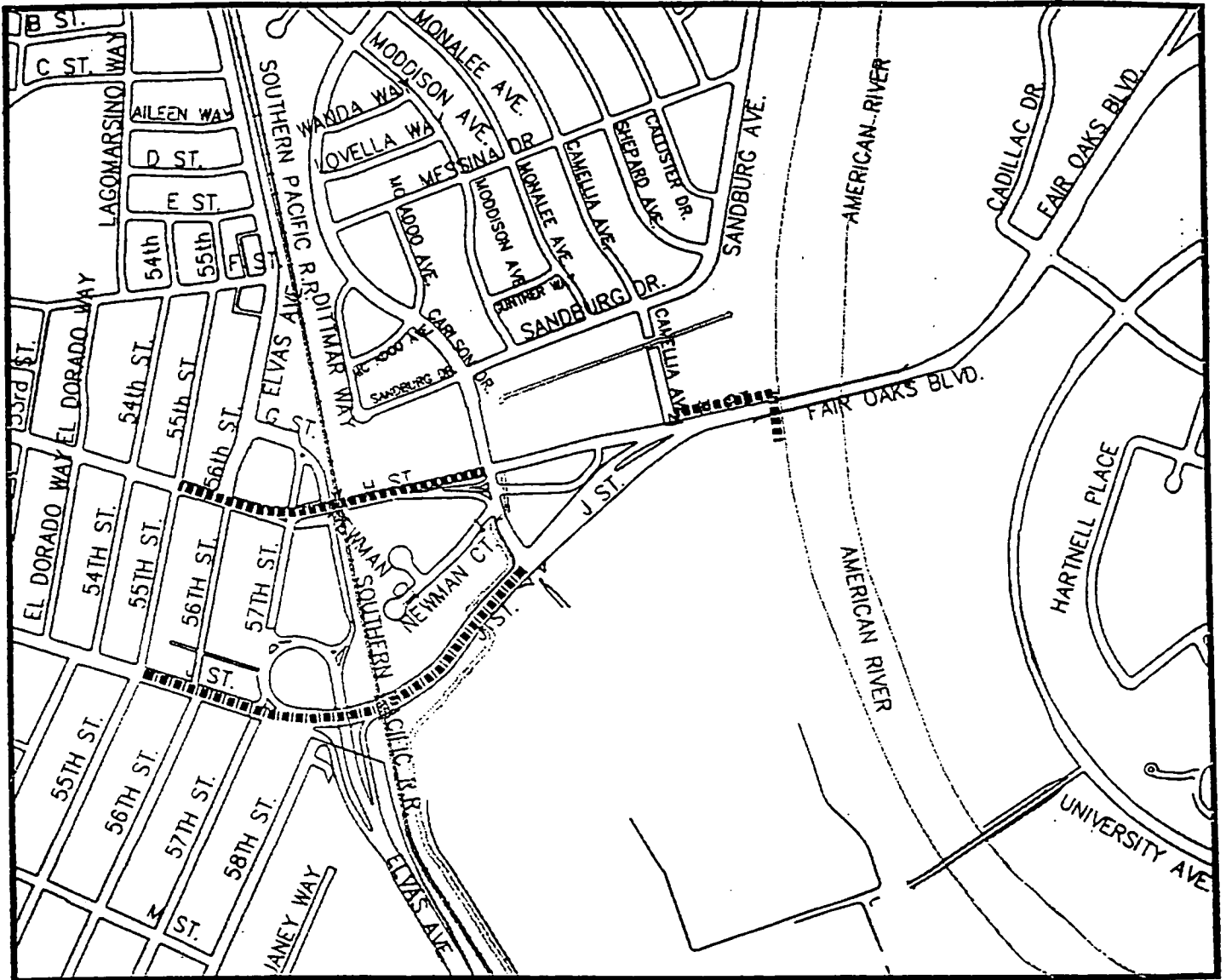
CSUS ACCESS PROJECT
FEASIBILITY STUDY
65th Street Bicycle/Pedestrian Link

APPROVED BY _____
BY _____
DATE _____

MARK THOMAS & CO. INC.
7300 ELVAS BLVD. SUITE 203
SACRAMENTO, CA 95822

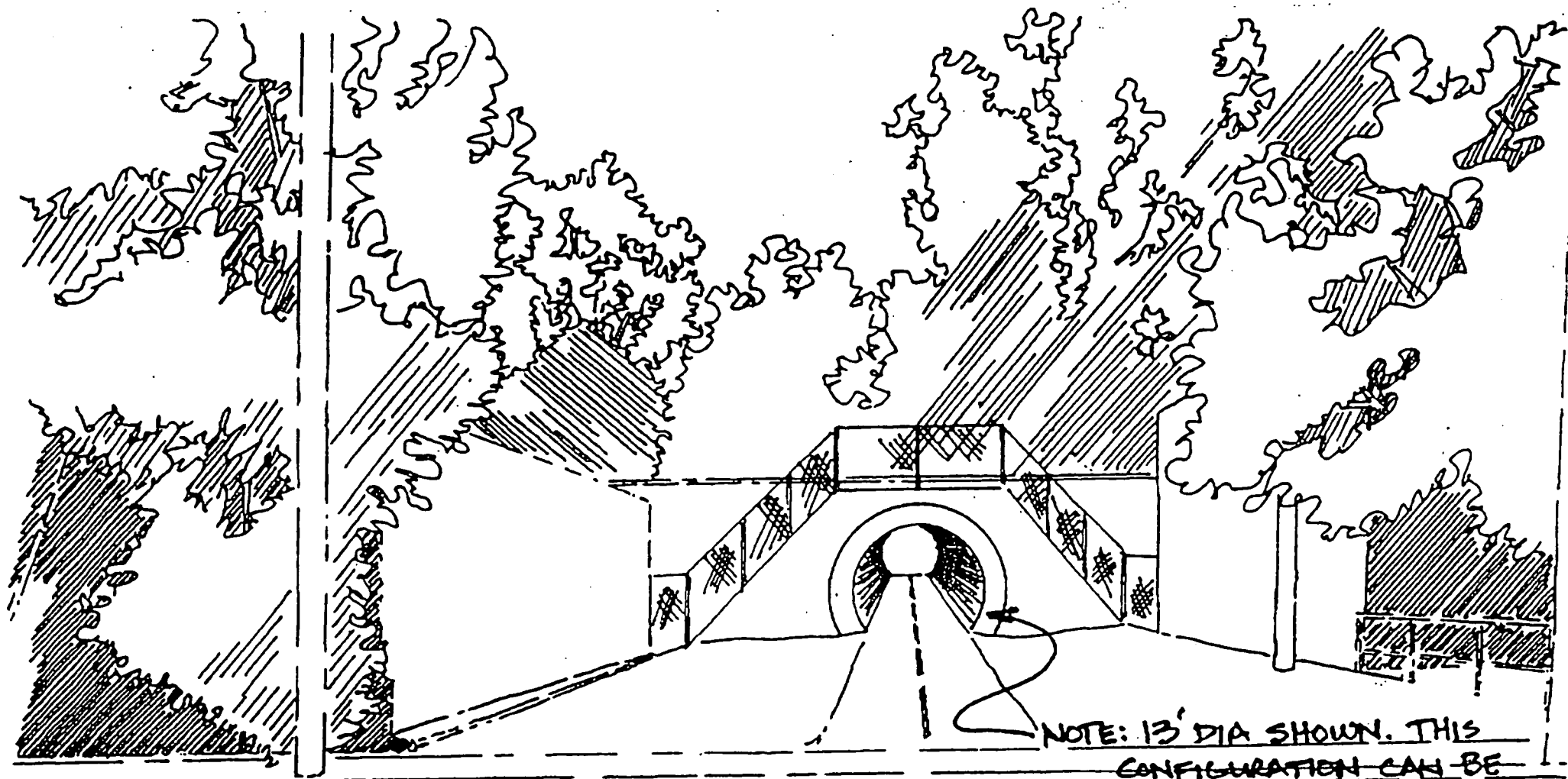
DRAWN BY: TAP
CHKD BY: RAH
DATE: 7/30/88
SCALE: 1"=100'

CSUS ACCESS PROJECTS



- "H" Street Bridge/Street Bikeways -
Camellia Ave. to 55th Street
- "J: Street Bikeway -
Camellia Ave. to 55th Street





NOTE: 13' DIA SHOWN. THIS
CONFIGURATION CAN BE
JACKED INTO PLACE. FOR
"CUT & COVER" INSTALLATION,
OTHER SHAPES CAN BE USED.