

RESOLUTION NO. 2005-367

ADOPTED BY THE SACRAMENTO CITY COUNCIL

ON DATE OF MAY 24 2005

RESOLUTION TO AMEND THE GENERAL PLAN TO REDESIGNATE 22.3+/- ACRES OF LOW DENSITY RESIDENTIAL (4-15 DU/NA), 2.1+/- ACRES OF MEDIUM DENSITY RESIDENTIAL (16-29 DU/NA) AND 2.0+/- ACRES OF PARKS-RECREATION-OPEN SPACE TO 23.5+/- ACRES OF LOW DENSITY RESIDENTIAL (4-15 DU/NA) AND 2.9+/- ACRES OF PARKS-RECREATION-OPEN SPACE FOR PROPERTY LOCATED NORTHWEST OF THE INTERSECTION OF TRUXEL ROAD AND SAN JUAN ROAD.

(APN: 225-0170-059)
(P04-067)

WHEREAS, the Planning Commission conducted a public hearing on April 28, 2005, and the City Council conducted a public hearing on May 24, 2005 concerning the above plan amendment and based on documentary and oral evidence submitted at the public hearing, the Council hereby finds:

1. The proposed land use amendment is compatible with the surrounding land uses;
2. The subject site is suitable for Low Density (4-15 du/na) residential and Parks-Recreation-Open Space development;
3. The proposal is consistent with the policies of the South Natomas Community Plan and the General Plan.

NOW, THEREFORE BE IT RESOLVED by the City Council of the City of Sacramento that:

- A. The 26.4± acre area described on the attached Exhibit A is hereby designated on the City of Sacramento General Plan land use map as 23.5+/- acres of Low Density Residential (4-15 du/na) and 2.9+/- acres of Parks-Recreation-Open Space.

HEATHER FARGO

MAYOR

ATTEST:

SHIRLEY CONCOLINO

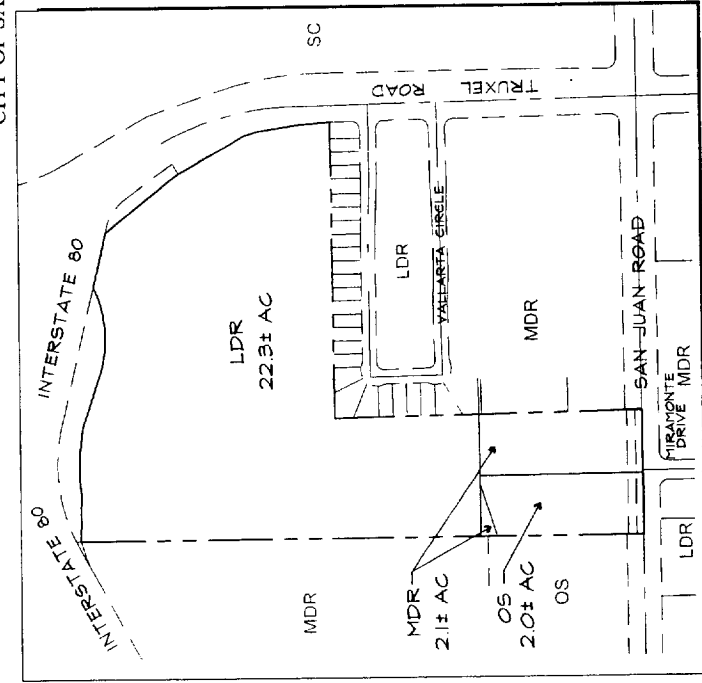
CITY CLERK

(P04-067)

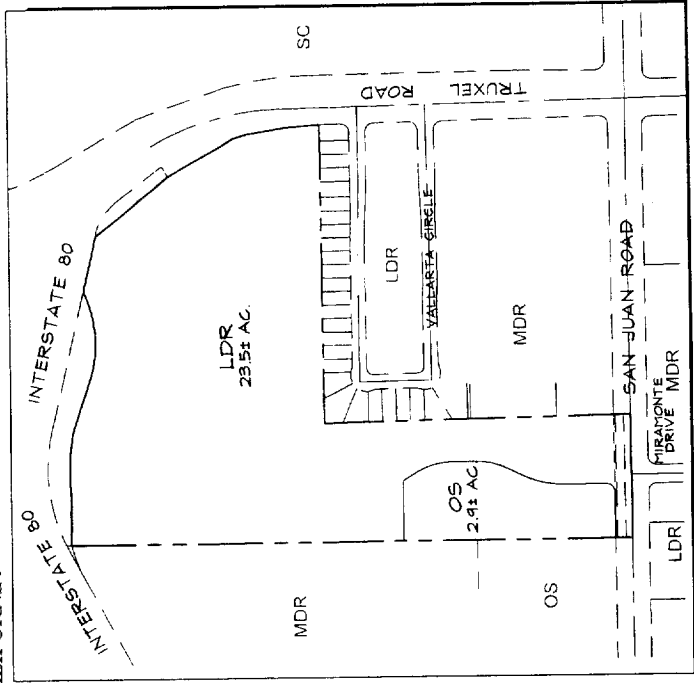
FOR CITY CLERK USE ONLY

RESOLUTION NO.: 2005-367
DATE ADOPTED: MAY 24 2005

GENERAL PLAN AMENDMENT EXHIBIT
SONORA SPRINGS
 CITY OF SACRAMENTO, CALIFORNIA
 FEBRUARY 8, 2005



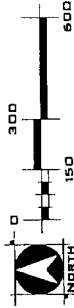
Existing General Plan



Proposed General Plan

GENERAL PLAN SUMMARY TABLE

DESIGNATION	LAND USE	EXISTING GENERAL PLAN	PROPOSED GENERAL PLAN	DIFFERENCE
LDR	LOW DENSITY RESIDENTIAL 4-8 DU/HA	22.3	23.5	+1.2
MDR	MEDIUM DENSITY RESIDENTIAL 16-24 DU/HA	2.1	2.4	+0.3
OS	PARKS-RECREATION-OPEN SPACE	2.0	2.4	+0.4
		26.4± ACRES	26.4± ACRES	



WOOD ROGERS
 ENGINEERING • PLANNING • SURVEYING
 2801 O STREET, SUITE 100, SACRAMENTO, CA 95818
 PHONE (916) 341-7760 FAX (916) 341-7267

FOR CITY CLERK USE ONLY

RESOLUTION NO.: 2005-367

DATE ADOPTED: MAY 24 2005