

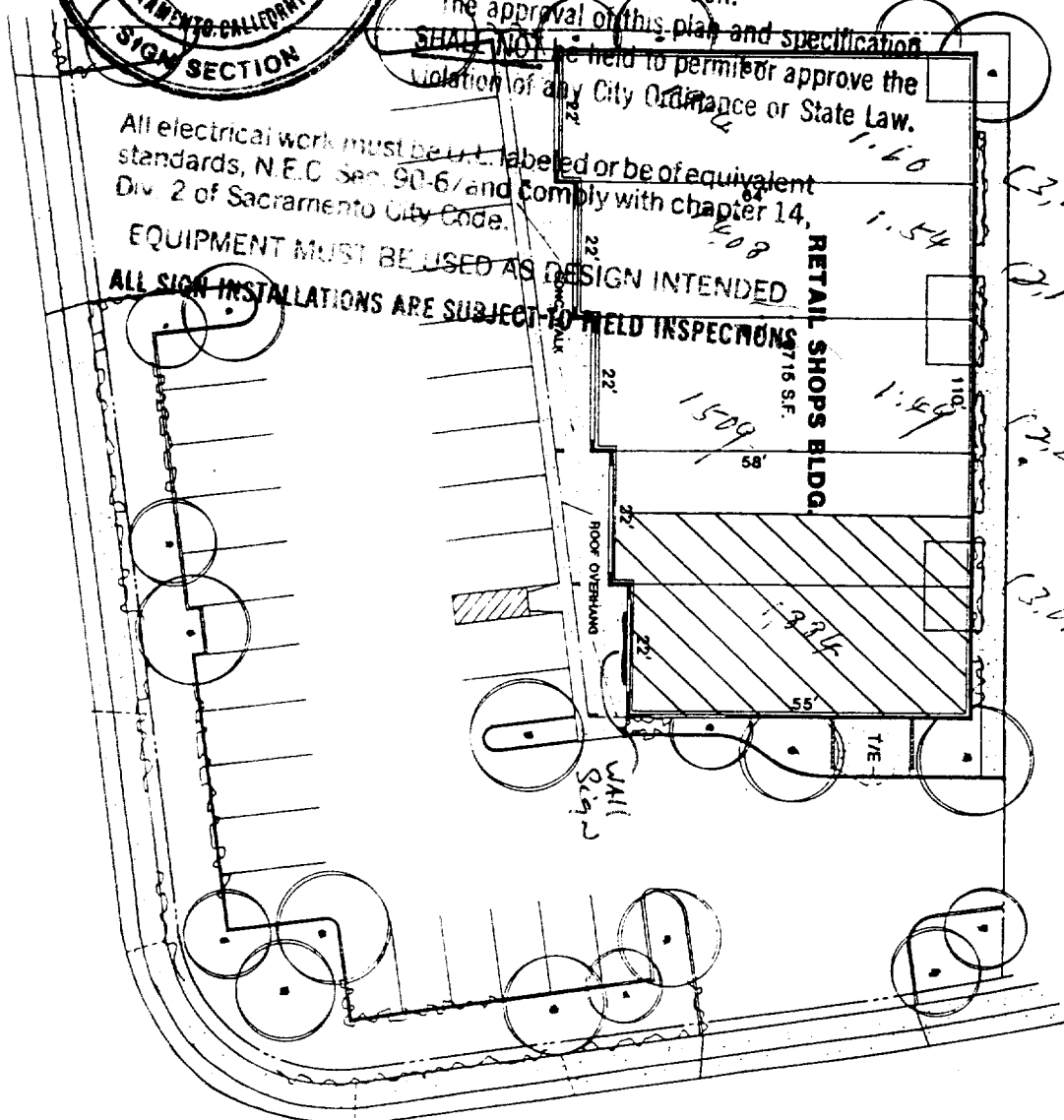
ASKING 1.3
This set of plans and specifications must be kept on the job at all times and it is unlawful to make any changes or alterations from the same without written permission from the City of Sacramento Sign Section.

The approval of this plan and specification SHALL NOT be held to permit or approve the violation of any City Ordinance or State Law.

All electrical work must be U.L. labeled or be of equivalent standards, N.E.C. Sec. 90-6 and comply with chapter 14, Div. 2 of Sacramento City Code.

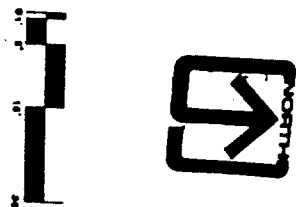
EQUIPMENT MUST BE USED AS DESIGN INTENDED.

ALL SIGN INSTALLATIONS ARE SUBJECT TO FIELD INSPECTIONS



FOLSOM BOULEVARD

JULLIARD DRIVE



S21370

FILE COPY

8399 Folsom Bl. #4

A.B.
DM
LB

HAVLICK & HUGHES
ARCHITECTS AND PLANNERS

1771 STOCKTON BLVD. 2ND FLOOR
SACRAMENTO, CALIFORNIA 95811

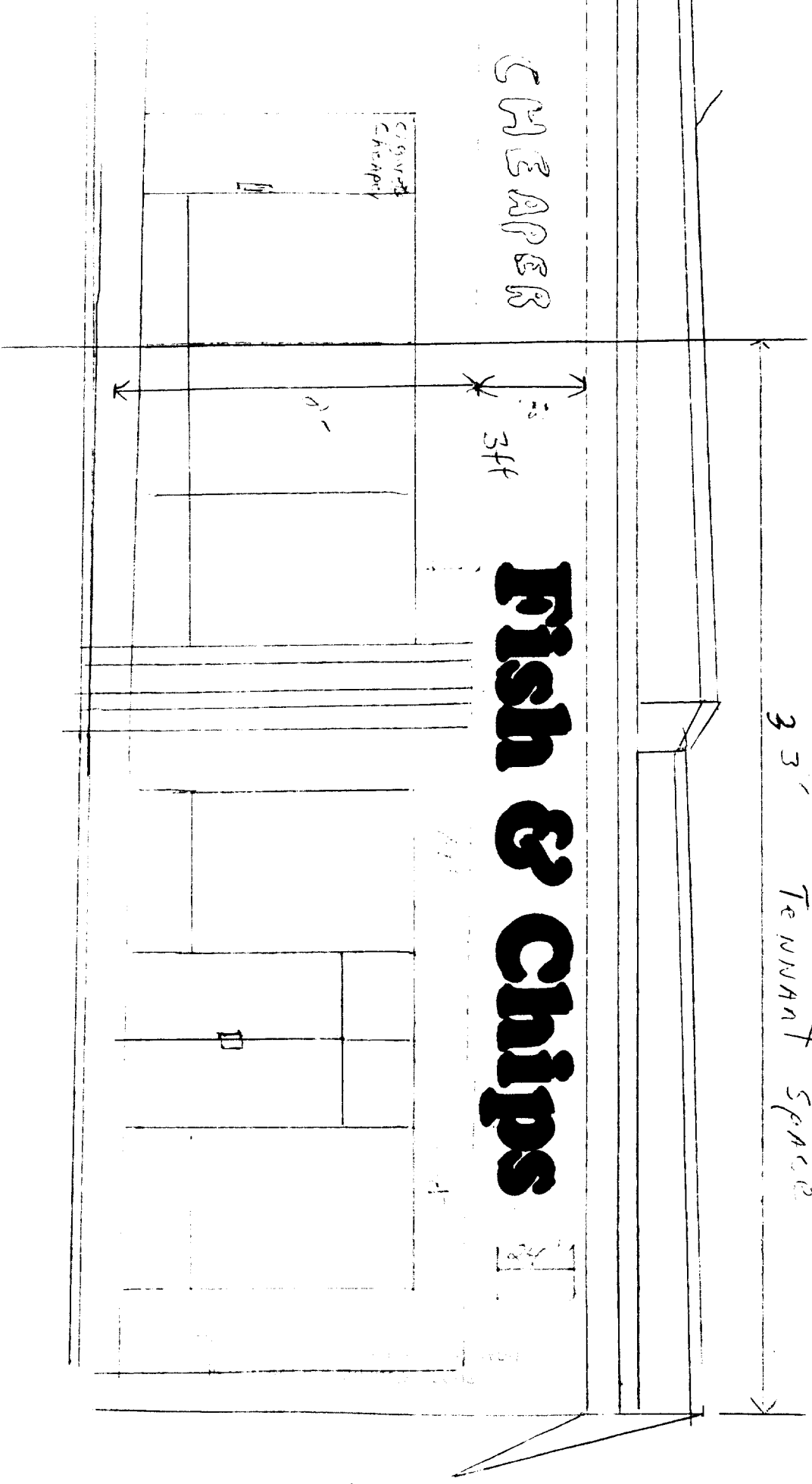
FOLSOM/JULLIARD RETAIL SHOPS
SACRAMENTO, CALIFORNIA

Aluminum PAN Channel Letters w/clear Acrylic
(NeoBrite neon) *Exposed neon faces
3'3" Tenant space

CHEAPER

3ft

Fish & Chips



sign-up
A Type of Sign

2500 Marconi Ave. Ste. 313
Sacramento, CA 95821
(916) 486-7007 • Fax 486-7002

