

RESOLUTION NO. 99-642

ADOPTED BY THE SACRAMENTO CITY COUNCIL

ON DATE OF NOV 16 1999

APPROVING FINAL MAP ENTITLED "NATOMAS CROSSING VILLAGE 18" AND SUBDIVISION IMPROVEMENT AGREEMENT (P96-083)

WHEREAS, THE CITY COUNCIL OF THE CITY OF SACRAMENTO FINDS AND DETERMINES AS FOLLOWS:

- A. The Final Map for Natomas Crossing Village 18, located on the southeast corner of Stadium Boulevard and the East Drain with provisions for its design and improvement, is consistent with the North Natomas Community Plan. See Exhibit "A-1, A-2 & A-3" for project location.
- B. The Final Map is in substantial compliance with the previously approved tentative map.

NOW, THEREFORE, BE IT RESOLVED BY THE COUNCIL OF THE CITY OF SACRAMENTO AS FOLLOWS:

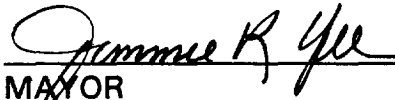
- 1. The Final Map for this project is hereby approved subject to the execution by all parties of the Subdivision Improvement Agreement for that subdivision.
- 2. All offers of dedication shown on said map are hereby accepted subject to the improvement thereof required by the Subdivision Improvement Agreement.
- 3. The City Manager and City Clerk are authorized and directed to execute on behalf of the City of Sacramento that certain Subdivision Improvement Agreement between the City and Kimball Hill Homes California Inc., a California Corporation to provide for the subdivision improvements required by the Subdivision Map Act and Title 40 (Subdivision Regulations) of the Sacramento City Code.

FOR CITY CLERK USE ONLY


RESOLUTION NO.: 99-642

DATE ADOPTED: NOV 16 1999

4. The City Clerk is authorized and directed to record the above-mentioned agreement in the official records of Sacramento County.


ACTING MAYOR

ATTEST:


CITY CLERK

S:\techsvs\devsvs\council\P96-083\village18ccltr

FOR CITY CLERK USE ONLY

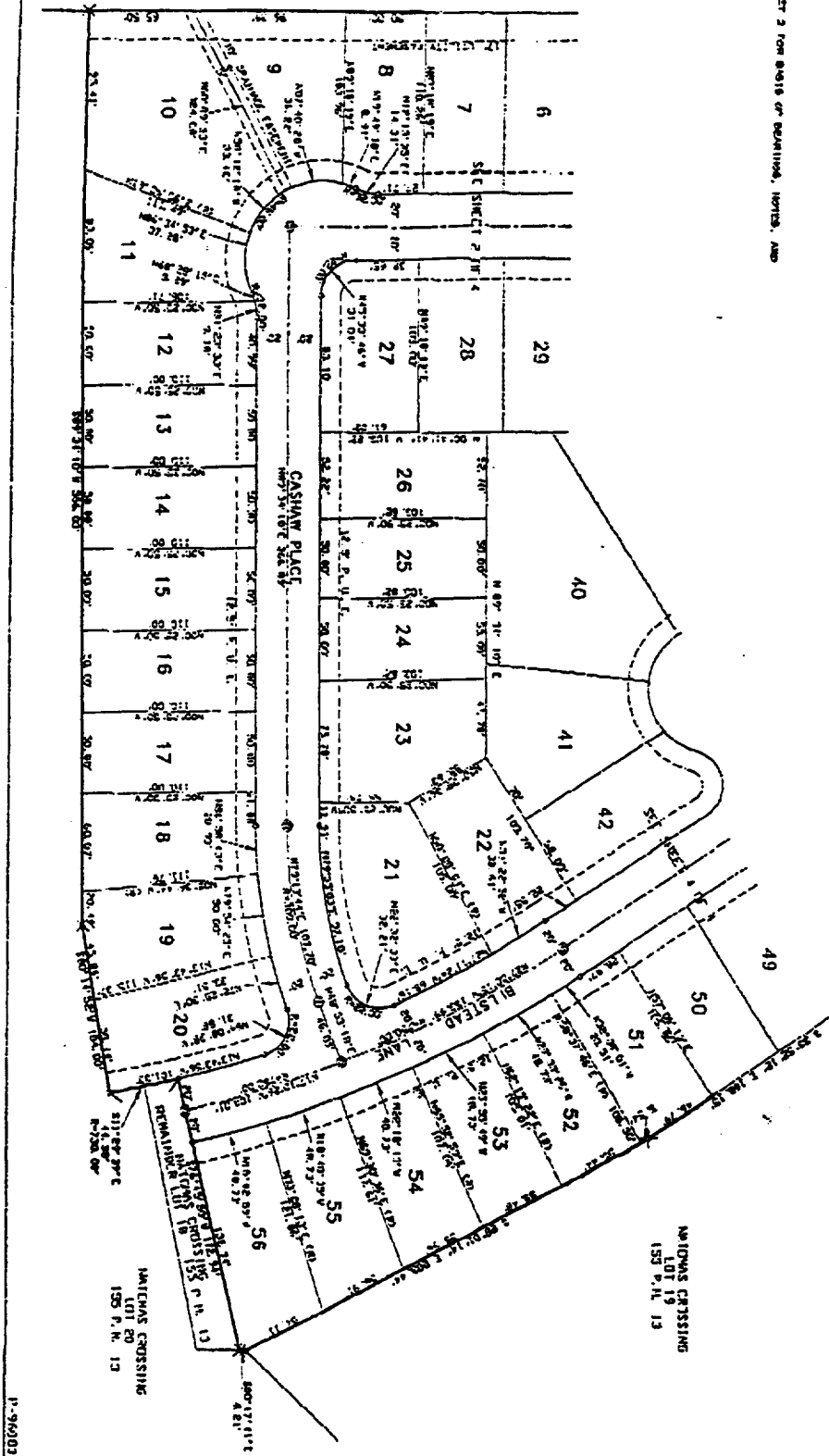
RESOLUTION NO.: 99-642

DATE ADOPTED: NOV 16 1999

EXHIBIT "A-2"

PLAT OF
NATOMAS CROSSING VILLAGE 18
 A PORTION OF PARCEL 18 OF MASTER PARCEL MAP
 "NATOMAS CROSSING" 155 P.M. 13
 CITY OF SACRAMENTO, CALIFORNIA
 SCALE 1"=40'
 NOVEMBER, 1999
 The **Spink Corporation**
 SHEET 3 OF 4

NOTE:
 REFER TO SHEET 2 FOR BASIS OF SURVEYING, NOTES, AND
 LEGEND



1-99003

FOR CITY CLERK USE ONLY

RESOLUTION NO: **99-642**
 DATE ADOPTED: **NOV 16 1999**

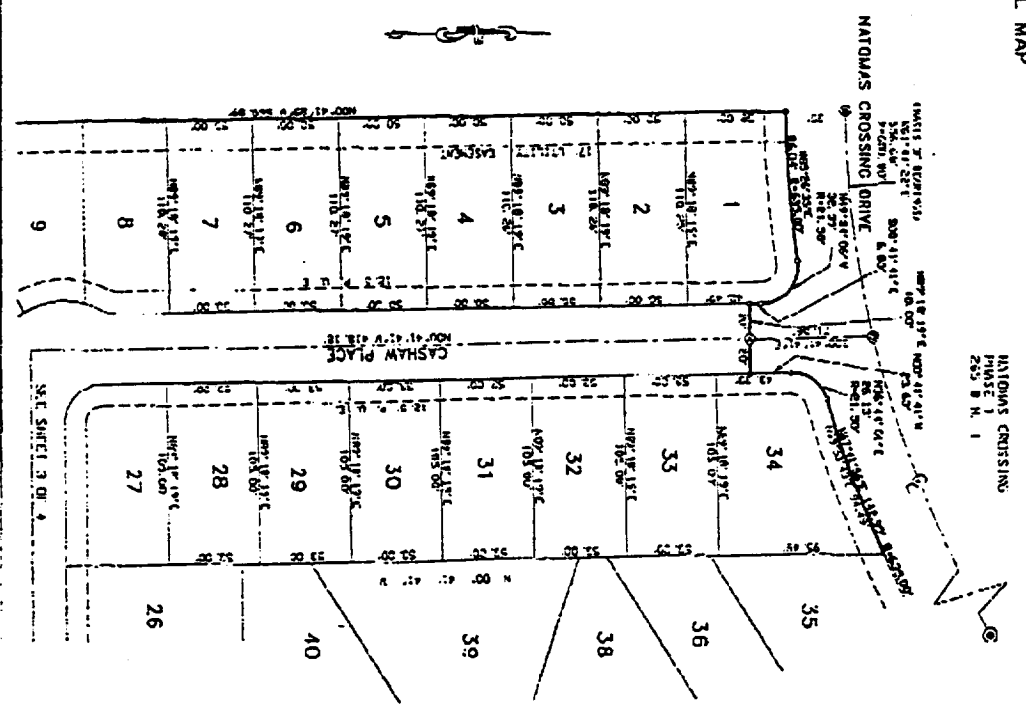
EXHIBIT "A-1"

PLAT OF
NATOMAS CROSSING VILLAGE 18
 A PORTION OF PARCEL 18 OF MASTER PARCEL MAP
 "NATOMAS CROSSING", 155 P.M. 13
 CITY OF SACRAMENTO, CALIFORNIA
 SCALE 1"=40'
 NOVEMBER, 1999
The Spink Corporation
 SHEET 2 OF 4

FACTS OF INTEREST
 THE BASIS OF RECORDING FOR THIS MAP IS IDENTICAL WITH THAT OF
 THE ORIGINAL MAP OF NATOMAS CROSSING VILLAGE 18 SUBDIVISION OF PARCEL 18 OF
 MASTER PARCEL MAP "NATOMAS CROSSING", 155 P.M. 13, FILED FOR RECORDING IN
 SACRAMENTO COUNTY, CALIFORNIA, BOOK 18, PAGE 158.

- NOTES**
1. ALL DIMENSIONS ALONG DOTTED LINES ARE GROUND MEASUREMENTS.
 2. ALL ROAD LOT CORNERS WILL BE SET WITH A 3/4" IRON PIPE AND PLASTIC CAP
 STAMPED "N.C.E. 25948". STREET LOT CORNERS WILL BE MARKED WITH A 3/4" IRON
 PIPE AND PLASTIC CAP AT THE BACK OF SIDEWALK ON THE PROJECTION OF THE LOT LINE.
 3. ROLL 5000 ARE COMPASSING ROLL UNLESS NOTED OTHERWISE.
 4. THIS SUBDIVISION CONTAINS 4,000 ACRES, MORE OR LESS.

- LEGEND**
- DISTRICTION POLICE
 - 1/2" P.K. MAIL 1/4" P.M. X 1-1/2" LONG
 - ROAD P.C. MAIL
 - ROAD HEADWATER AS NOTED
 - ⊗ PUBLIC UTILITY EXISTENCE
 - ⊗ RAILROAD LINE
 - ⊗ NOT ROLL NUMBER FOR CITY STREETS
 - ⊗ 8/8" IRON PIPE WITH PLASTIC CAP
 - ⊗ STAMPED "N.C.E. 25948"
 - ⊗



SEE SHEET 4 OF 4

FOR CITY CLERK USE ONLY

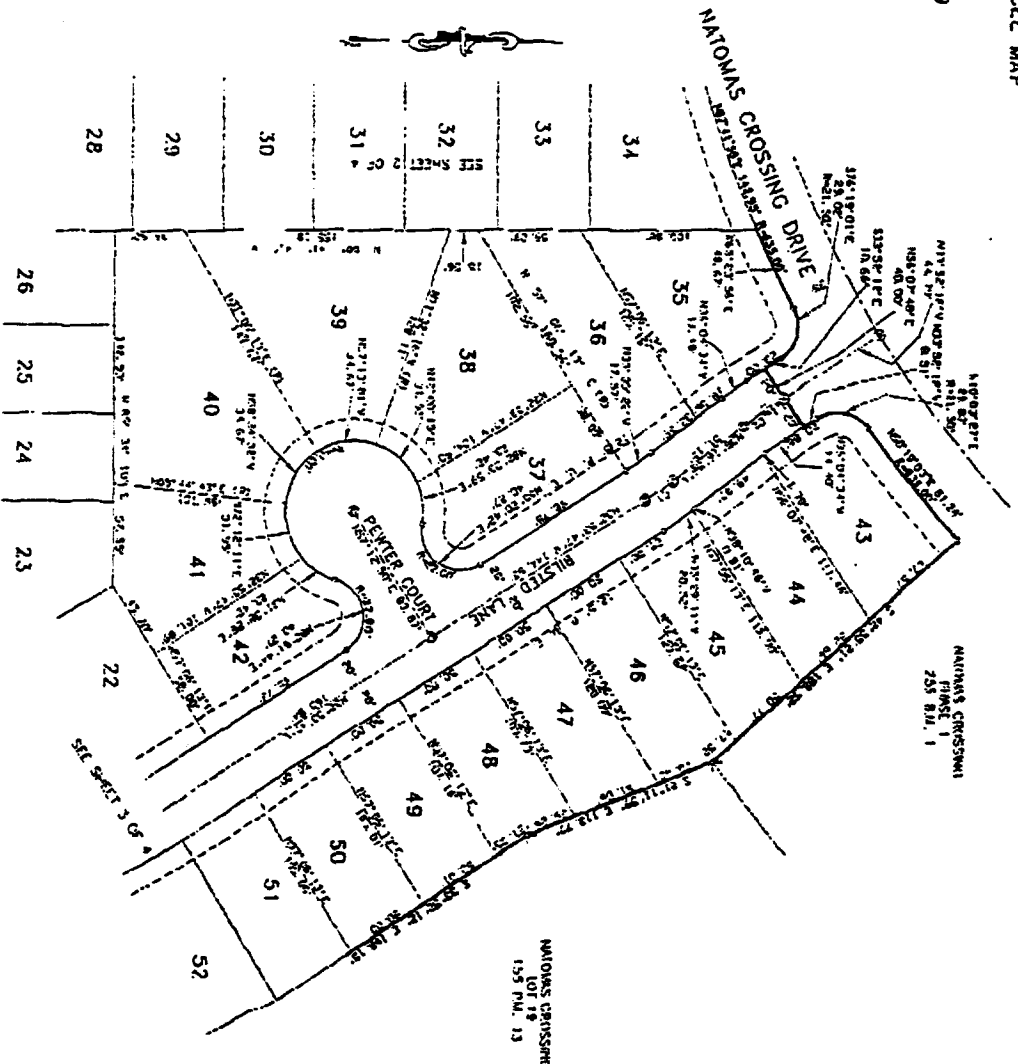
RESOLUTION NO: 99-642
 DATE ADOPTED: NOV 16 1999

EXHIBIT "A-3"

PLAT OF
NATOMAS CROSSING VILLAGE 18
 A PORTION OF PARCEL 18 OF MASTER PARCEL MAP
 "NATOMAS CROSSING", 155 P.M. 13
 CITY OF SACRAMENTO, CALIFORNIA
 SCALE 1"=40'
 NOVEMBER, 1999
 The **Spink Corporation**

NOTE:
 REFER TO SHEET 3 FOR BASIS OF EXISTING, LINES, AND
 LOTS.

100	100	100	100
100	100	100	100
100	100	100	100
100	100	100	100



P-89923

FOR CITY CLERK USE ONLY

RESOLUTION NO: 99-642
 DATE ADOPTED: NOV 16 1999